

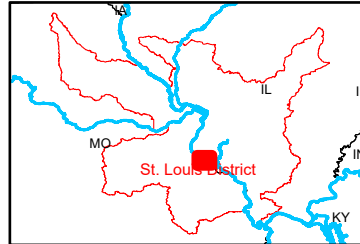
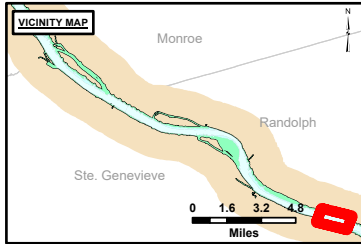
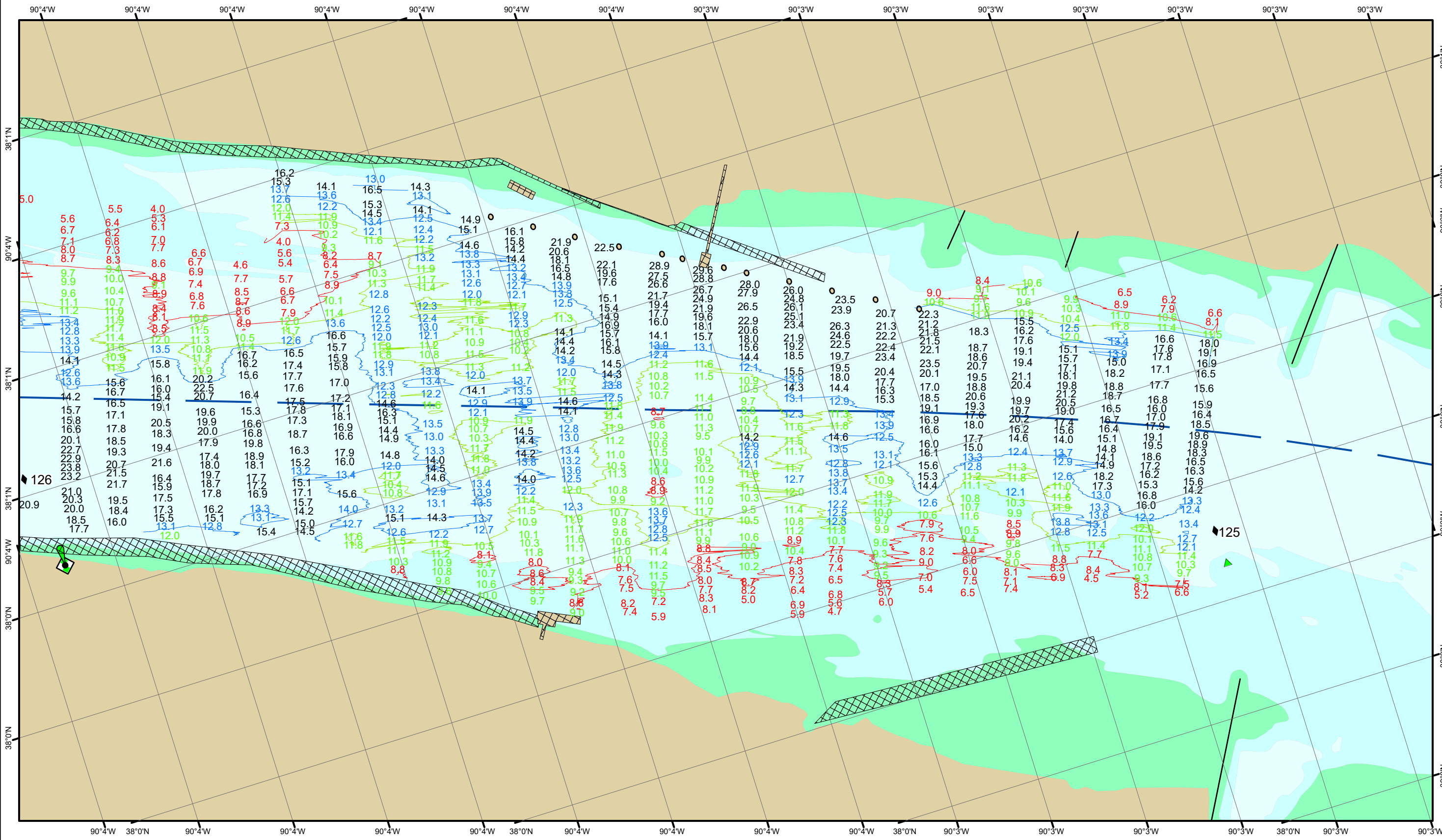


DISCLAIMER: The United States Government... The data represents the results of data collection... The information depicted on this map represents the results of a survey conducted on the date indicated and can only be considered to represent the general condition existing at that time.

Table with columns: Surveyed By, Plotted By, Checked By. Includes a signature line for the Surveyed By field.

Survey Information  
FORT\_CHARTERS\_UPPER\_MISSISSIPPI  
UM\_SL\_FCC\_20241015\_BD\_1  
15 October 2024

Reach Number  
1 of 20



**LAYERS**

- River Mile
- Sailing Line
- 9' below LWRP2014 Surface
- 12' below LWRP2014 Surface
- 14' below LWRP2014 Surface

Depths shown are below LWRP2014 Surface

**Aids to Navigation**

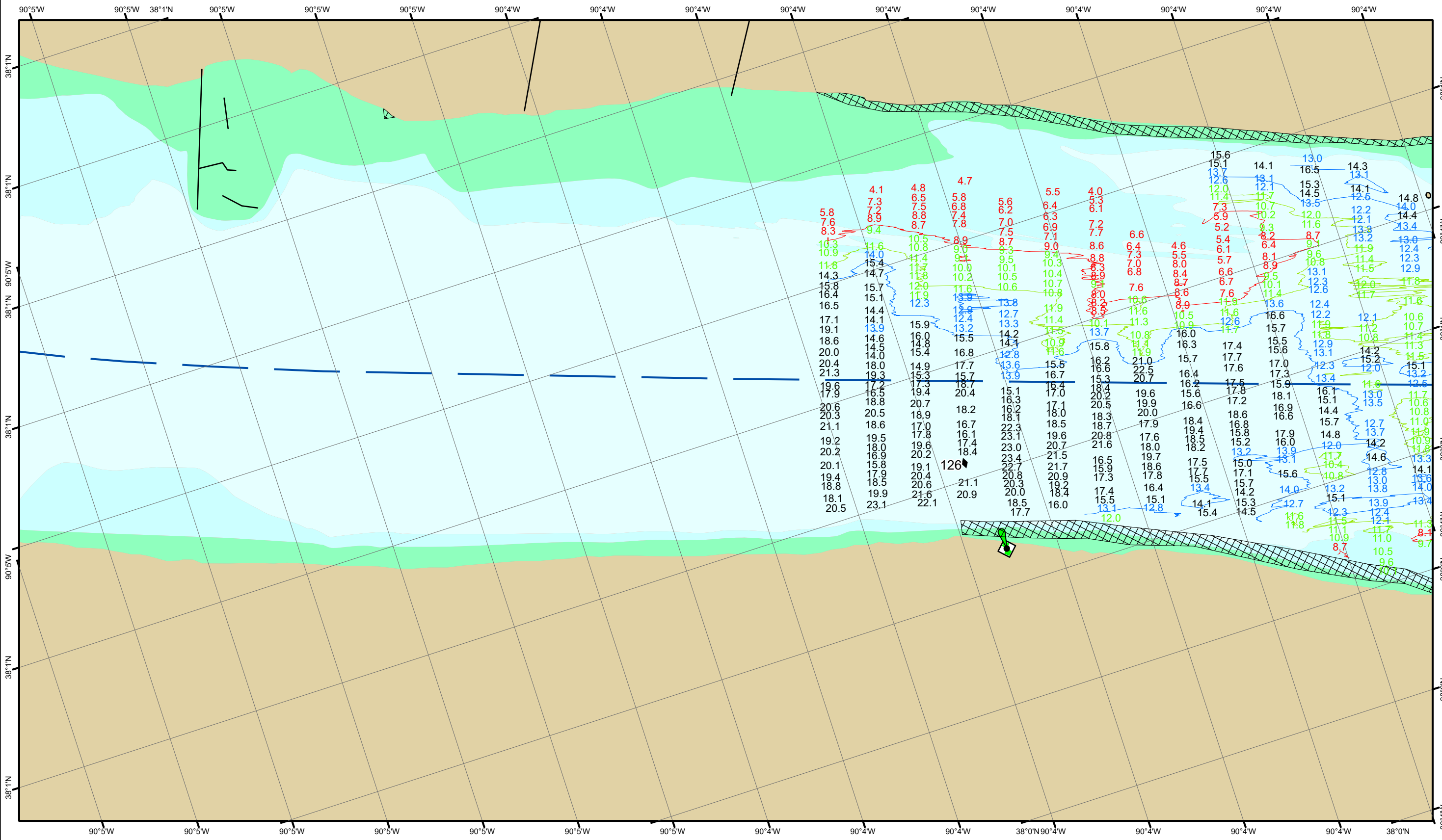
- Green
- Red
- Junction
- Green Buoy
- Red Buoy

**Training Structure**

- Revetment
- Tower/Power Poles
- Electrical Lines
- Fiber Optic Lines
- Pipelines

Scale: 0, 250, 500, 750, 1,000 Feet

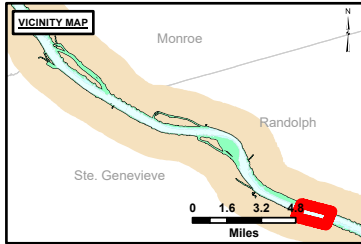
**NOTES:**  
Horizontal Coordinate System: North American Datum of 1983 (NAD83), projected to the State Plane Coordinate System (SPCS), Missouri East Zone. Distance units in U.S. Survey Feet.  
Vertical Datum: Soundings are shown in feet and indicate depths below the 2014 Low Water Reference Plane.  
The information depicted on this map represents the results of a survey conducted on the date indicated and can only be considered to represent the general condition existing at that time.  
The location of navigation aids are based on and provided by the U.S. Coast Guard.



**DISCLAIMER:** The United States Government Lenders...  
 Distribution Liability: The data represents the results of data...  
 The information depicted on this map represents the results of a survey conducted on the date indicated and can only be considered to represent the general condition existing at that time.

Surveyed By:	Plotted By:	Checked By:

**Survey Information**  
 FORT\_CHARTRES\_UPPER\_MISSISSIPPI  
 UM\_SL\_FCC\_20241015\_BD\_1  
 15 October 2024



**LAYERS**

- River Mile
- Sailing Line
- 9' below LWRP2014 Surface
- 12' below LWRP2014 Surface
- 14' below LWRP2014 Surface

Depths shown are below LWRP2014 Surface

**Aids to Navigation**

- Green
- Red
- Junction
- Green Buoy
- Red Buoy

**Training Structure**

- Revetment
- Tower/Power Poles
- Electrical Lines
- Fiber Optic Lines
- Pipelines

Feet  
0 250 500 750 1,000

**NOTES:**  
 Horizontal Coordinate System:  
 North American Datum of 1983 (NAD83), projected to the State Plane Coordinate System (SPCS), Missouri East Zone. Distance units in U.S. Survey Feet.  
 Vertical Datum:  
 Soundings are shown in feet and indicate depths below the 2014 Low Water Reference Plane.  
 The information depicted on this map represents the results of a survey conducted on the date indicated and can only be considered to represent the general condition existing at that time.  
 The location of navigation aids are based on and provided by the U.S. Coast Guard.