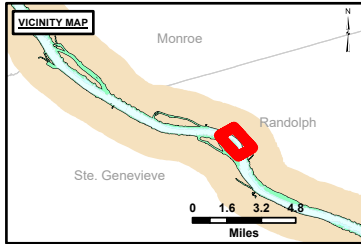


**DISCLAIMER:** The United States Government Lenders...  
 Distribution Liability: The data represents the results of data collection...  
 The information depicted on this map represents the results of a survey conducted on the date indicated and can only be considered to represent the general condition existing at that time.

U.S. ARMY CORPS OF ENGINEERS		
Surveyed By:	Plotted By:	Checked By:

**Survey Information**  
 FORT\_CHARTRES\_UPPER\_MISSISSIPPI  
 UM\_SL\_FCC\_20240930\_BD\_3  
 30 September 2024



**LAYERS**

- River Mile
- Sailing Line
- 9' below LWRP2014 Surface
- 12' below LWRP2014 Surface
- 14' below LWRP2014 Surface

Depths shown are below LWRP2014 Surface

**Aids to Navigation**

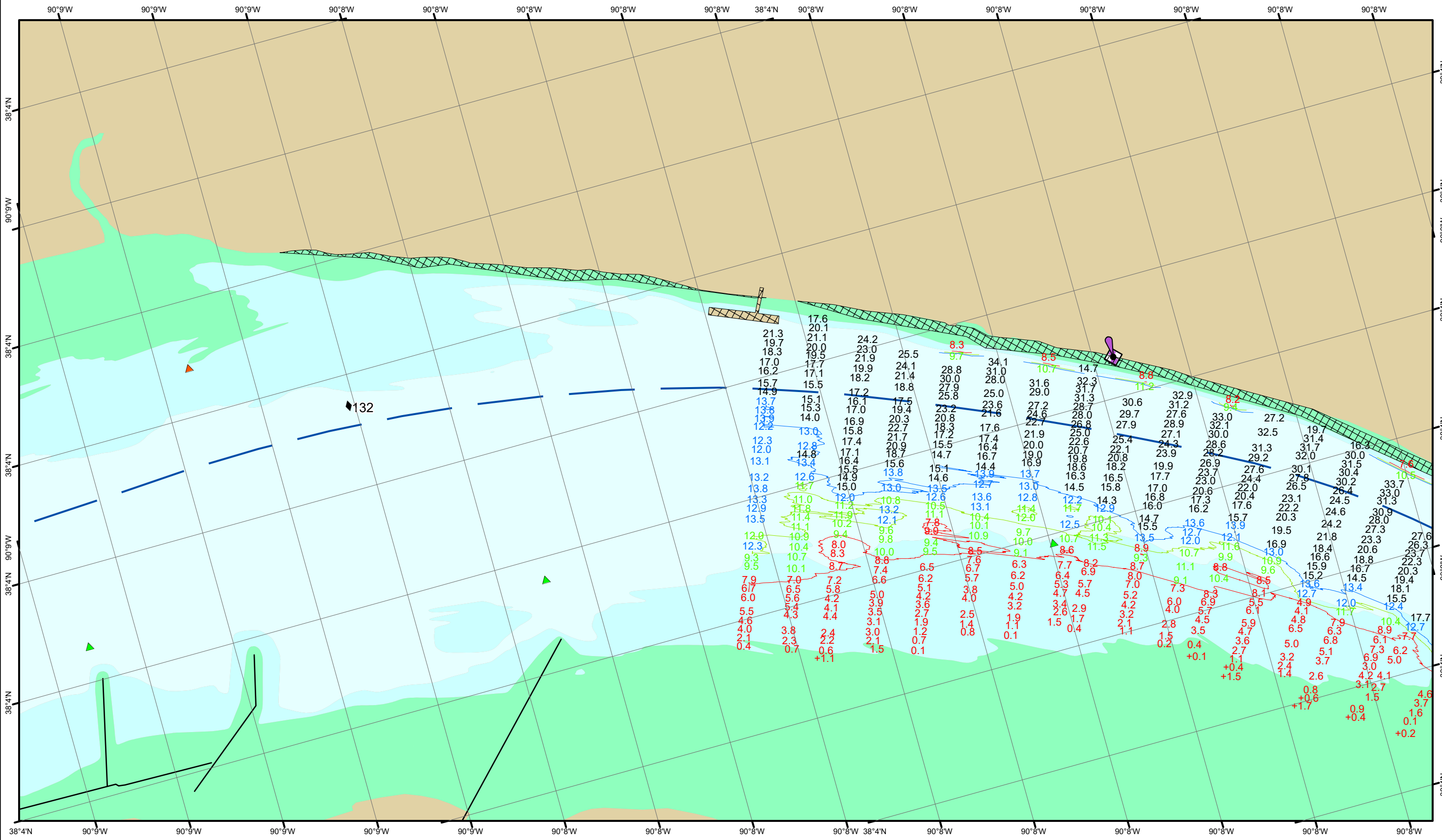
- Green
- Red
- Junction
- Green Buoy
- Red Buoy

**Structures and Pipelines**

- Training Structure
- Revetment
- Tower/Power Poles
- Electrical Lines
- Fiber Optic Lines
- Pipelines

Scale: 0 to 1,000 Feet

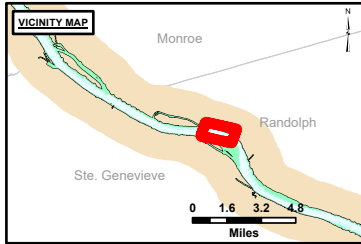
**NOTES:**  
 Horizontal Coordinate System: North American Datum of 1983 (NAD83), projected to the State Plane Coordinate System (SPCS), Missouri East Zone. Distance units in U.S. Survey Feet.  
 Vertical Datum: Soundings are shown in feet and indicate depths below the 2014 Low Water Reference Plane.  
 The information depicted on this map represents the results of a survey conducted on the date indicated and can only be considered to represent the general condition existing at that time.  
 The location of navigation aids are based on and provided by the U.S. Coast Guard.



**DISCLAIMER:** The United States Government Lenders and/or guarantors of the data herein. The data represents the results of data collection/processing by a specific US Army Corps of Engineers project. The data is provided for informational purposes only. It is not intended for navigation. The user assumes all liability for any use of the data for other than the intended purpose. The United States Government makes no warranty, express or implied, in the data herein. The user assumes all liability for any use of the data for other than the intended purpose. The information and data herein are provided for informational purposes only. The user assumes all liability for any use of the data for other than the intended purpose. These data belong to the Government. Therefore the user may not transfer these data to others without the approval of the Government.

Surveyed By:	Plotted By:	Checked By:

**Survey Information**  
 FORT\_CHARTRES\_UPPER\_MISSISSIPPI  
 UM\_SL\_FCC\_20240930\_BD\_3  
 30 September 2024



**LAYERS**

- River Mile
- Sailing Line
- 9' below LWRP2014 Surface
- 12' below LWRP2014 Surface
- 14' below LWRP2014 Surface

Depths shown are below LWRP2014 Surface

**Aids to Navigation**

- Green
- Red
- Junction
- Green Buoy
- Red Buoy

**Structures**

- Training Structure
- Revetment
- Tower/Power Poles
- Electrical Lines
- Fiber Optic Lines
- Pipelines

Feet  
0 250 500 750 1,000

**NOTES:**  
 Horizontal Coordinate System:  
 North American Datum of 1983 (NAD83), projected to the State Plane Coordinate System (SPCS), Missouri East Zone. Distance units in U.S. Survey Feet.  
 Vertical Datum:  
 Soundings are shown in feet and indicate depths below the 2014 Low Water Reference Plane.  
 The information depicted on this map represents the results of a survey conducted on the date indicated and can only be considered to represent the general condition existing at that time.  
 The location of navigation aids are based on and provided by the U.S. Coast Guard.