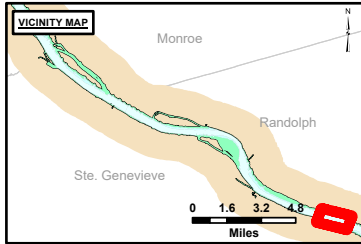


DISCLAIMER: The United States Government furnishes this information as a service to the public. It is not intended to be used for any purpose other than that for which it was prepared. The United States Government makes no warranty, express or implied, regarding the accuracy, reliability, or completeness of the information. The user assumes all liability for any use of the information other than that for which it was prepared. These data belong to the Government. Therefore, the recipient may not transfer these data to others without the approval of the Government.

Surveyed By:	Plotted By:	Checked By:

Survey Information
 FORT_CHARTRES_UPPER_MISSISSIPPI
 UM_SL_FCC_20240930_BD_1
 30 September 2024



LAYERS

- River Mile
- Sailing Line
- 9' below LWRP2014 Surface
- 12' below LWRP2014 Surface
- 14' below LWRP2014 Surface

Depths shown are below LWRP2014 Surface

Aids to Navigation

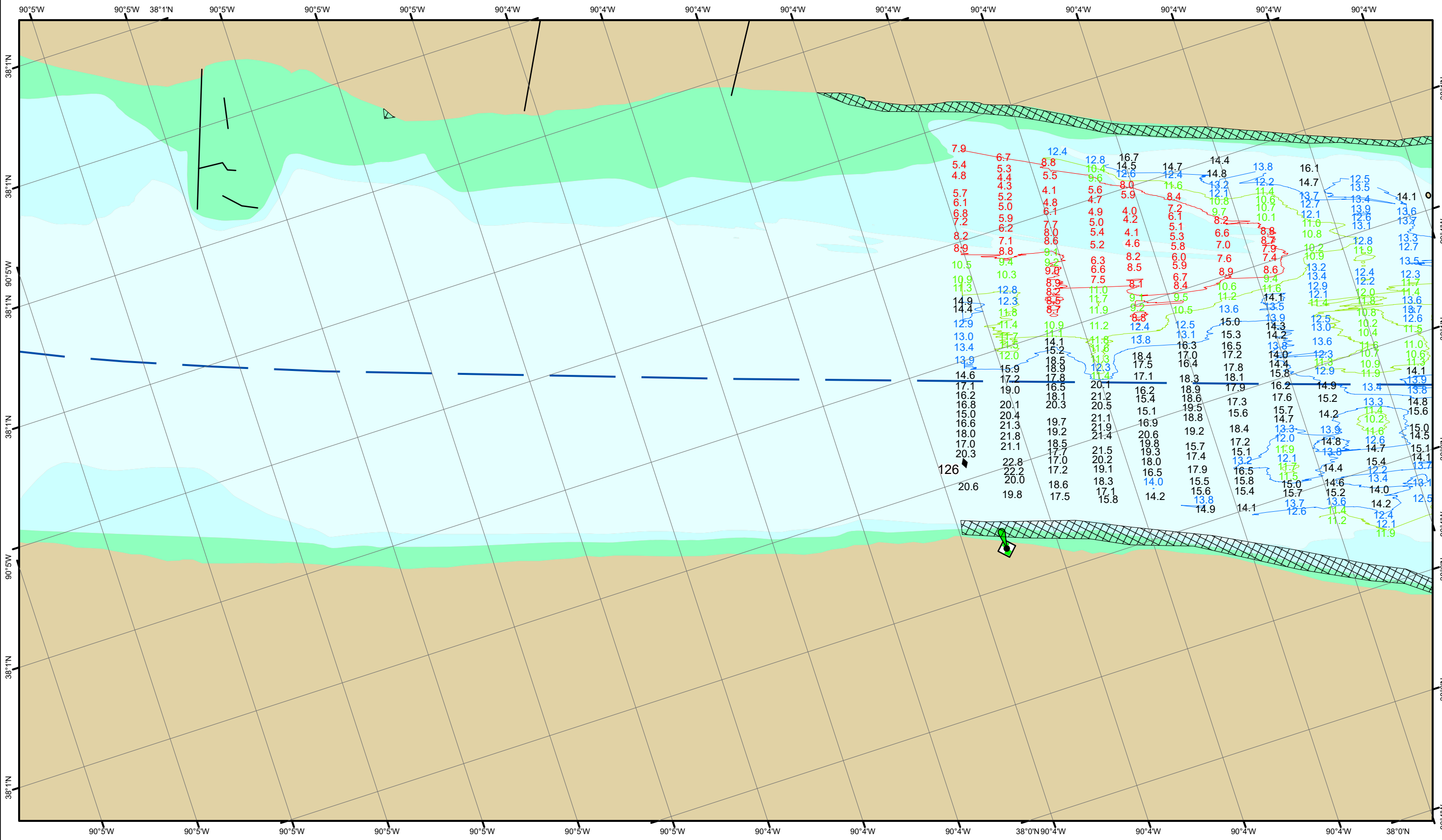
- Green
- Red
- Junction
- Green Buoy
- Red Buoy

Training Structure

- Revetment
- Tower/Power Poles
- Electrical Lines
- Fiber Optic Lines
- Pipelines

Scale: 0, 250, 500, 750, 1,000 Feet

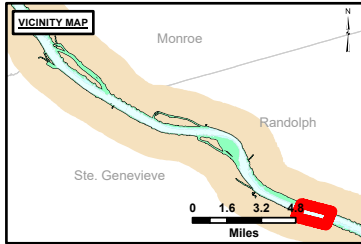
NOTES:
 Horizontal Coordinate System:
 North American Datum of 1983 (NAD83), projected to the State Plane Coordinate System (SPCS), Missouri East Zone. Distance units in U.S. Survey Feet.
 Vertical Datum:
 Soundings are shown in feet and indicate depths below the 2014 Low Water Reference Plane.
 The information depicted on this map represents the results of a survey conducted on the date indicated and can only be considered to represent the general condition existing at that time.
 The location of navigation aids are based on and provided by the U.S. Coast Guard.



DISCLAIMER: The United States Government Lenders Access Commodity. The data represents the results of data collection/monitoring for a specific US Army Corps of Engineers project. The data is provided for informational purposes only. The US Government makes no warranty, express or implied, regarding the accuracy, completeness, or reliability of the data for any purpose other than the intended purpose of the data. The user shall be responsible for the use of the data. The US Government shall be held harmless for any damage or loss resulting from the use of the data. These data belong to the Government. Therefore the recipient may not transfer these data to others without obtaining the permission of the US Army Corps of Engineers District: CEMVS.

Surveyed By	Plotted By	Checked By

Survey Information
 FORT_CHARTRES_UPPER_MISSISSIPPI
 UM_SL_FCC_20240930_BD_1
 30 September 2024



LAYERS

- River Mile
- Sailing Line
- 9' below LWRP2014 Surface
- 12' below LWRP2014 Surface
- 14' below LWRP2014 Surface

Depths shown are below LWRP2014 Surface

Aids to Navigation

- Green
- Red
- Junction
- Green Buoy
- Red Buoy

Training Structure

- Revetment
- Tower/Power Poles
- Electrical Lines
- Fiber Optic Lines
- Pipelines

Feet
0 250 500 750 1,000

NOTES:
 Horizontal Coordinate System:
 North American Datum of 1983 (NAD83), projected to the State Plane Coordinate System (SPCS), Missouri East Zone. Distance units in U.S. Survey Feet.
 Vertical Datum:
 Soundings are shown in feet and indicate depths below the 2014 Low Water Reference Plane.
 The information depicted on this map represents the results of a survey conducted on the date indicated and can only be considered to represent the general condition existing at that time.
 The location of navigation aids are based on and provided by the U.S. Coast Guard.

Reach Number
 2 of 20