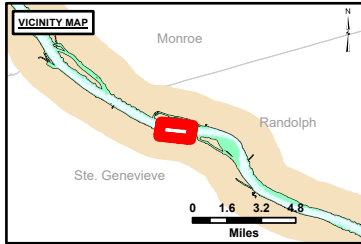


**DISCLAIMER:** The United States Government furnishes this information for general information only. The user assumes all liability for any use of the information. The United States Government makes no warranty, express or implied, in the use of the information. The user shall be held harmless for any damage or loss resulting from the use of the information. The United States Government shall not be liable for any damage or loss resulting from the use of the information. The user shall be held harmless for any damage or loss resulting from the use of the information.

Surveyed By:	Plotted By:	Checked By:

**Survey Information**  
 FORT\_CHARTRES\_UPPER\_MISSISSIPPI  
 UM\_SL\_FCC\_20230926\_BD\_1  
 26 September 2023



**LAYERS**

- ◆ River Mile
- Sailing Line
- 9' below LWRP2014 Surface
- 12' below LWRP2014 Surface
- 14' below LWRP2014 Surface

Depths shown are below LWRP2014 Surface

**Aids to Navigation**

- Green
- Red
- Junction
- ▲ Green Buoy
- ▲ Red Buoy

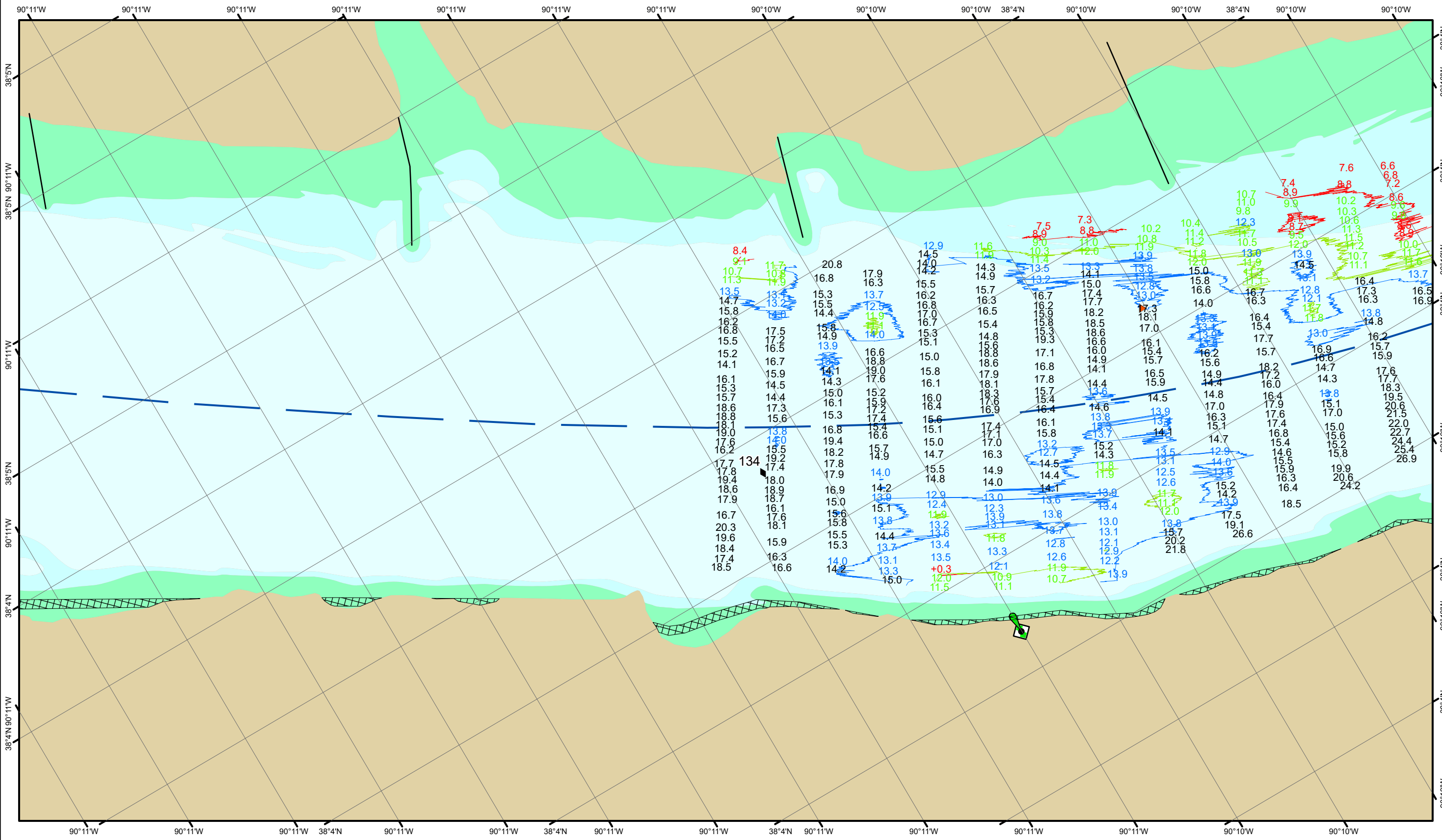
**Structures**

- Training Structure
- ▣ Revetment
- Tower/Power Poles
- Electrical Lines
- Fiber Optic Lines
- Pipelines

Vertical Datum:  
 Soundings are shown in feet and indicate depths below the 2014 Low Water Reference Plane.

The information depicted on this map represents the results of a survey conducted on the date indicated and can only be considered to represent the general condition existing at that time.

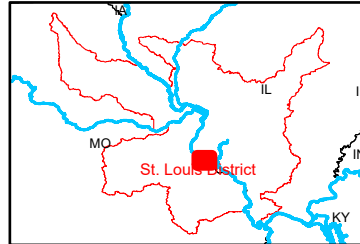
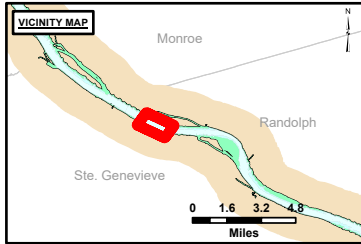
The location of navigation aids are based on and provided by the U.S. Coast Guard.



**DISCLAIMER:** The United States Government furnishes this information as a service to the public. It is not intended to be used for any purpose other than that for which it was prepared. The United States Government makes no warranty, express or implied, as to the accuracy, reliability, or completeness of the information. The user assumes all liability for any use of the information. The United States Government shall not be held liable for any damages, including consequential damages, arising from the use of the information. These data belong to the Government. Therefore the information and data furnished hereunder are the property of the Government and are loaned to the recipient. The recipient may not transfer these data to others without obtaining the permission of the Government.

Surveyed By:	Plotted By:	Checked By:

**Survey Information**  
 FORT\_CHARTRES\_UPPER\_MISSISSIPPI  
 UM\_SL\_FCC\_20230926\_BD\_1  
 26 September 2023



**LAYERS**

- River Mile
- Sailing Line
- 9' below LWRP2014 Surface
- 12' below LWRP2014 Surface
- 14' below LWRP2014 Surface

Depths shown are below LWRP2014 Surface

**Aids to Navigation**

- Green
- Red
- Junction
- Green Buoy
- Red Buoy

**Structures**

- Training Structure
- Revetment
- Tower/Power Poles
- Electrical Lines
- Fiber Optic Lines
- Pipelines

Vertical Datum:  
 Soundings are shown in feet and indicate depths below the 2014 Low Water Reference Plane.

The information depicted on this map represents the results of a survey conducted on the date indicated and can only be considered to represent the general condition existing at that time.

The location of navigation aids are based on and provided by the U.S. Coast Guard.

**Reach Number**  
 12 of 20