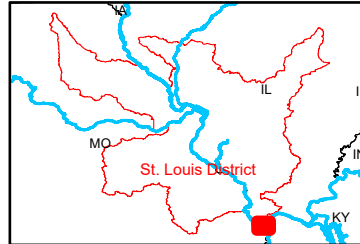
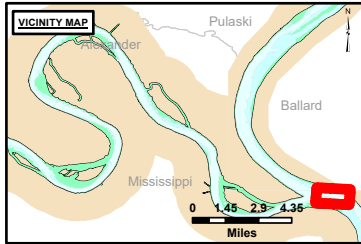


DISCLAIMER: The United States Government Lenders...
 Distribution Liability: The data represents the results of data...
 The information depicted on this map represents the results of a survey conducted on the date indicated and can only be considered to represent the general condition existing at that time.

Surveyed By:	Plotted By:	Checked By:

Survey Information
 ELIZA_POINT_UPPER_MISSISSIPPI
 UM_SL_EPC_20240829_BD_1
 29 August 2024



LAYERS

- River Mile
- Sailing Line
- 9' below LWRP2014 Surface
- 12' below LWRP2014 Surface
- 14' below LWRP2014 Surface

Depths shown are below LWRP2014 Surface

Aids to Navigation

- Green
- Red
- Junction
- Green Buoy
- Red Buoy

Structures

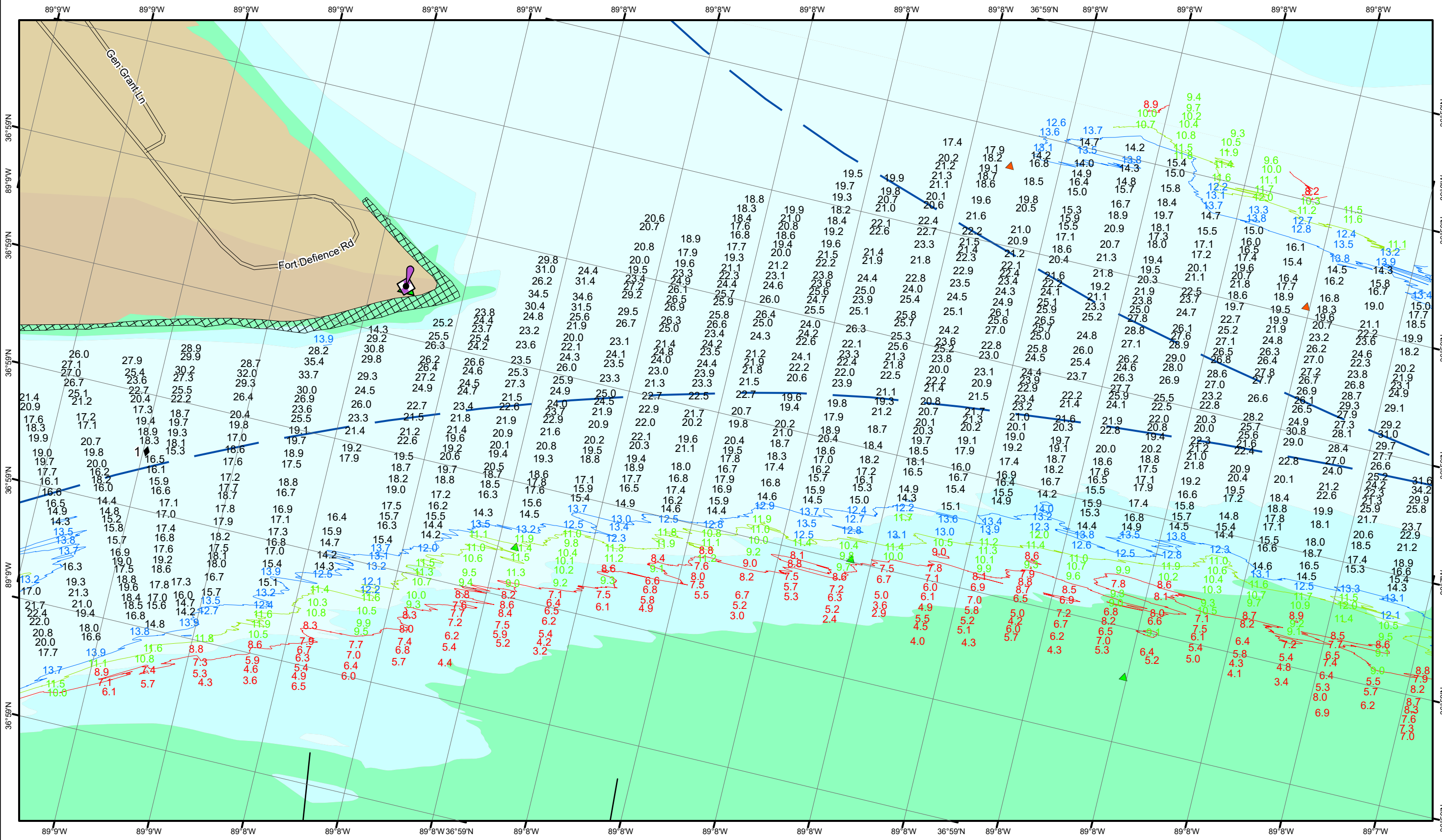
- Training Structure
- Revetment
- Tower/Power Poles
- Electrical Lines
- Fiber Optic Lines
- Pipelines

Vertical Datum:
 Soundings are shown in feet and indicate depths below the 2014 Low Water Reference Plane.

The information depicted on this map represents the results of a survey conducted on the date indicated and can only be considered to represent the general condition existing at that time.

The location of navigation aids are based on and provided by the U.S. Coast Guard.

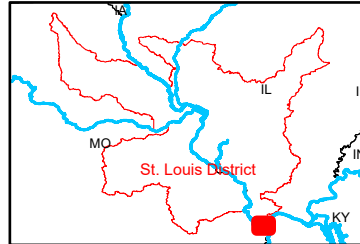
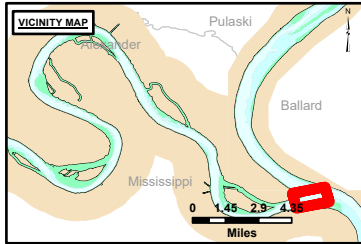
Reach Number
 1 of 27



DISCLAIMER: The United States Government Lenders...
 Distribution Liability: The data represents the results of data...
 The information depicted on this map represents the results of a survey conducted on the date indicated and can only be considered to represent the general condition existing at that time.

Surveyed By:	Plotted By:	Checked By:

Survey Information
 ELIZA_POINT_UPPER_MISSISSIPPI
 UM_SL_EPC_20240829_BD_1
 29 August 2024



LAYERS

- River Mile
- Sailing Line
- 9' below LWRP2014 Surface
- 12' below LWRP2014 Surface
- 14' below LWRP2014 Surface

Depths shown are below LWRP2014 Surface

Aids to Navigation

- Green
- Red
- Junction
- Green Buoy
- Red Buoy

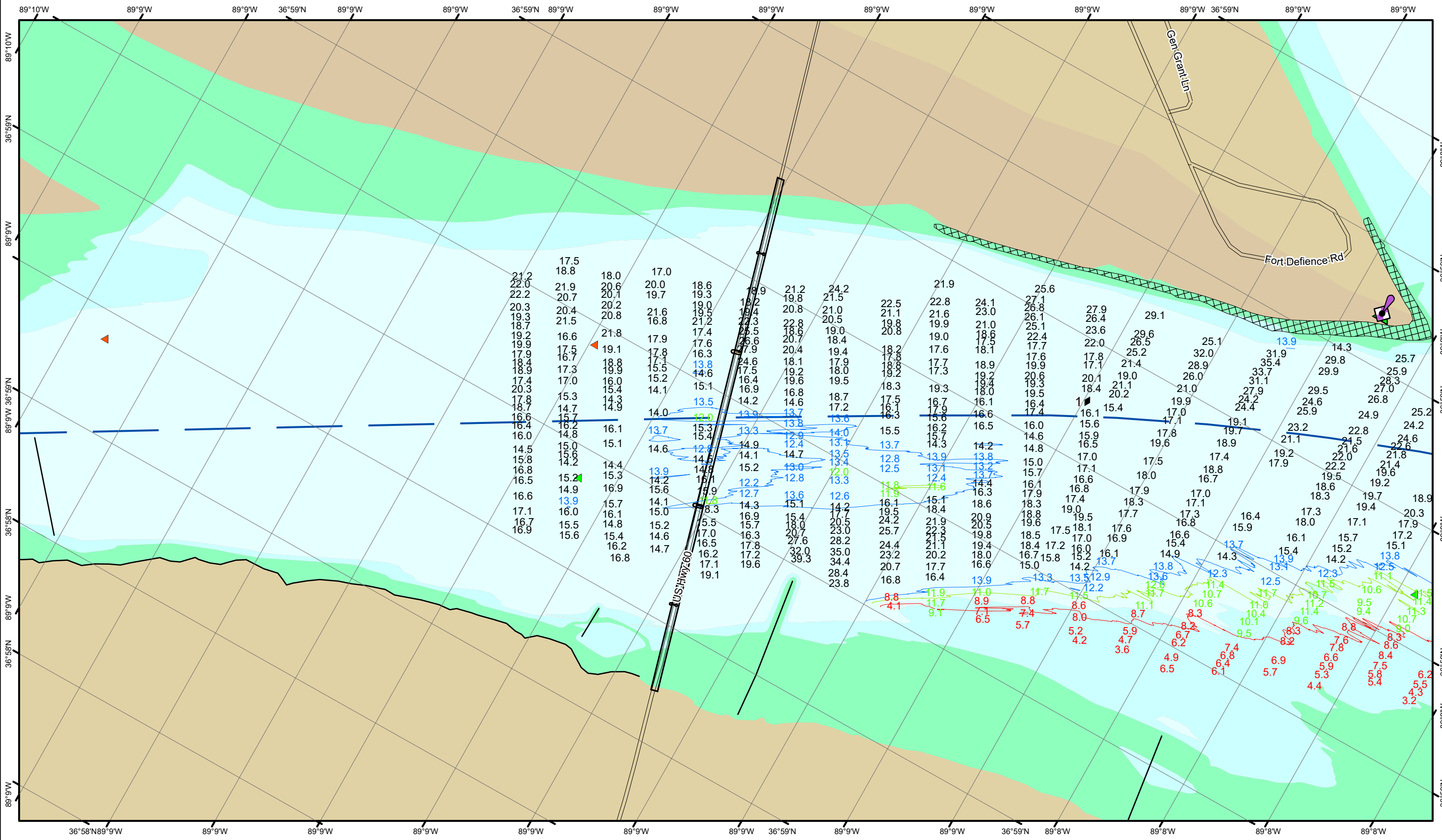
Structures and Lines

- Training Structure
- Revetment
- Tower/Power Poles
- Electrical Lines
- Fiber Optic Lines
- Pipelines

Scale: 0, 250, 500, 750, 1,000 Feet

NOTES:
 Horizontal Coordinate System:
 North American Datum of 1983 (NAD83), projected to the State Plane Coordinate System (SPCS), Missouri East Zone. Distance units in U.S. Survey Feet.
 Vertical Datum:
 Soundings are shown in feet and indicate depths below the 2014 Low Water Reference Plane.
 The information depicted on this map represents the results of a survey conducted on the date indicated and can only be considered to represent the general condition existing at that time.
 The location of navigation aids are based on and provided by the U.S. Coast Guard.

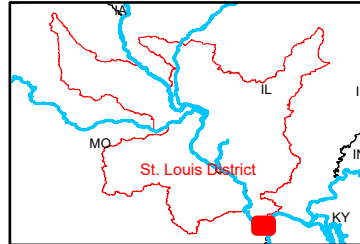
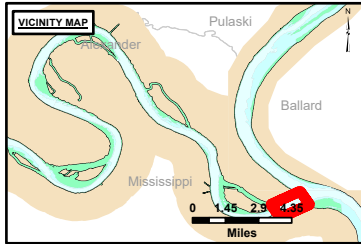
Reach Number
 2 of 27



DISCLAIMER: The United States Government Lenders and/or Borrowers are not liable for any errors or omissions in this document. The data represents the results of a survey conducted on the date indicated and can only be considered to represent the general condition existing at that time. The information depicted on this map represents the results of a survey conducted on the date indicated and can only be considered to represent the general condition existing at that time. The location of navigation aids are based on and provided by the U.S. Coast Guard.

Surveyed By:	Plotted By:	Checked By:

Survey Information
 ELIZA_POINT_UPPER_MISSISSIPPI
 UM_SL_EPC_20240829_BD_1
 29 August 2024



LAYERS

- River Mile
- Sailing Line
- 9' below LWRP2014 Surface
- 12' below LWRP2014 Surface
- 14' below LWRP2014 Surface

Depths shown are below LWRP2014 Surface

Aids to Navigation

- Green
- Red
- Junction
- Green Buoy
- Red Buoy

Training Structure

- Revetment
- Tower/Power Poles
- Electrical Lines
- Fiber Optic Lines
- Pipelines

Scale: 0, 250, 500, 750, 1,000 Feet

NOTES:
 Horizontal Coordinate System:
 North American Datum of 1983 (NAD83), projected to the State Plane Coordinate System (SPCS), Missouri East Zone. Distance units in U.S. Survey Feet.
 Vertical Datum:
 Soundings are shown in feet and indicate depths below the 2014 Low Water Reference Plane.
 The information depicted on this map represents the results of a survey conducted on the date indicated and can only be considered to represent the general condition existing at that time.
 The location of navigation aids are based on and provided by the U.S. Coast Guard.

Reach Number
 3 of 27