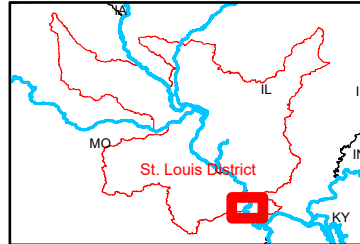
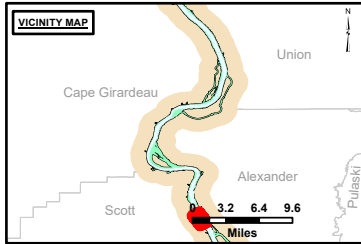


**DISCLAIMER:** The United States Government furnishes this information as a service to the public. It is not intended to be used for any purpose other than that for which it was prepared. The United States Government makes no warranty, express or implied, in this information and its use. The user assumes all liability for any damage or loss resulting from the use of this information. These data belong to the Government. The recipient may not transfer these data to others without the written consent of the Government.

Surveyed By:	Plotted By:	Checked By:

**Survey Information**  
 DEVILS ISLAND\_UPPER MISSISSIPPI  
 UM\_SL\_DIC\_20250303\_BD\_1  
 03 March 2025



**LAYERS**

- River Mile
- Sailing Line
- 9' below LWRP2014 Surface
- 12' below LWRP2014 Surface
- 14' below LWRP2014 Surface

Depths shown are below LWRP2014 Surface

**Aids to Navigation**

- Green
- Red
- Junction
- Green Buoy
- Red Buoy

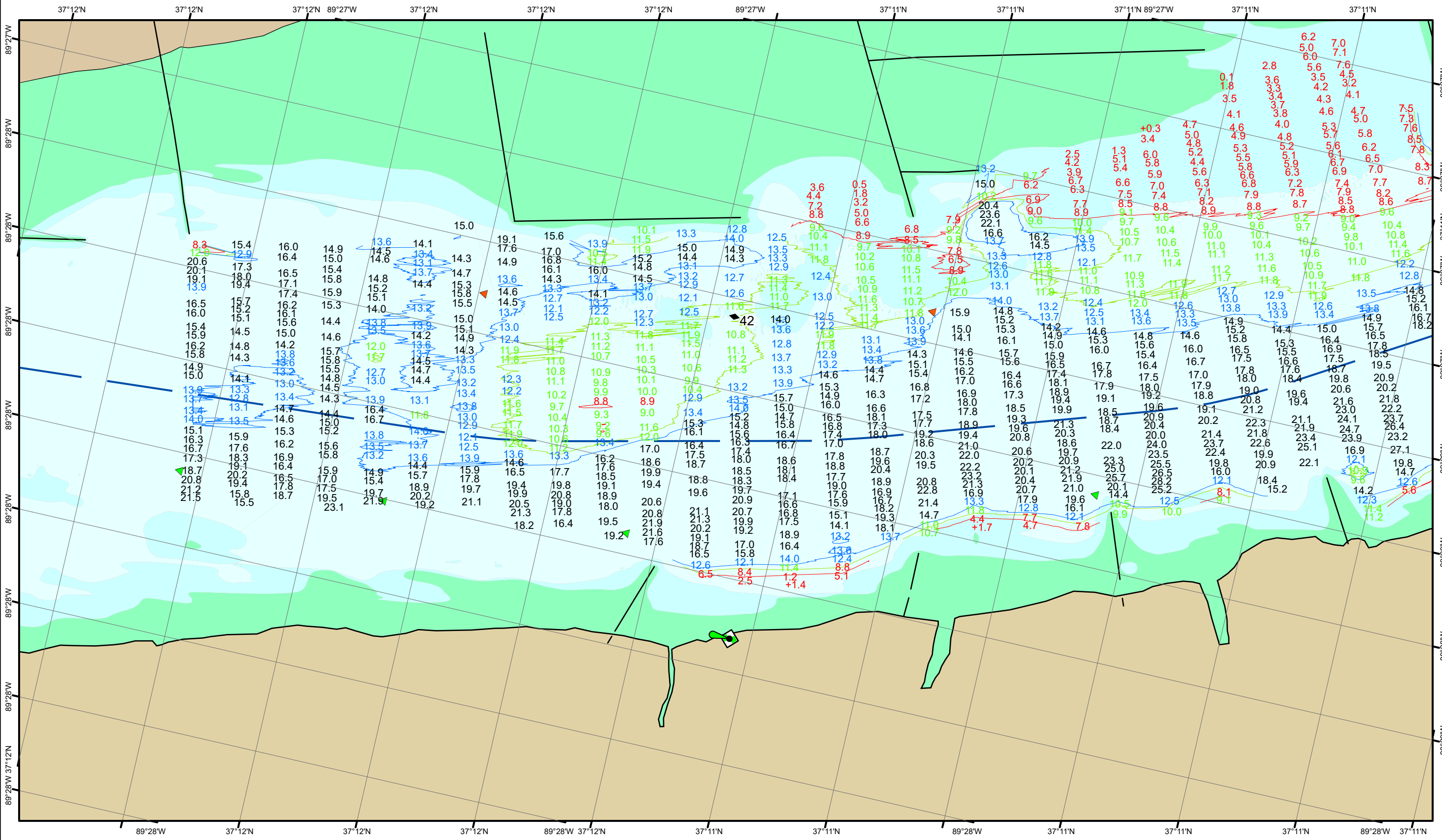
**Training Structure**

- Revetment
- Tower/Power Poles
- Electrical Lines
- Fiber Optic Lines
- Pipelines

Feet  
0 250 500 750 1,000

**NOTES:**  
 Horizontal Coordinate System:  
 North American Datum of 1983 (NAD83), projected to the State Plane Coordinate System (SPCS), Missouri East Zone. Distance units in U.S. Survey Feet.  
 Vertical Datum:  
 Soundings are shown in feet and indicate depths below the 2014 Low Water Reference Plane.  
 The information depicted on this map represents the results of a survey conducted on the date indicated and can only be considered to represent the general condition existing at that time.  
 The location of navigation aids are based on and provided by the U.S. Coast Guard.

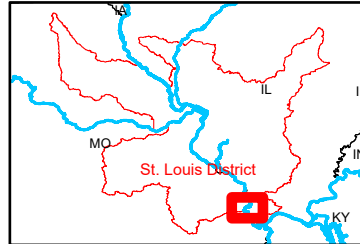
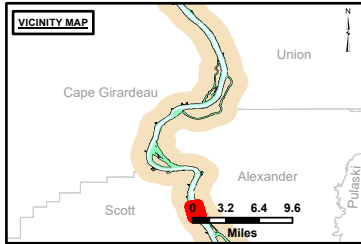
**Reach Number**  
 2 of 35



**DISCLAIMER:** The United States Government furnishes this information as a service to the public. It is not intended to be used for any purpose other than that for which it was prepared. The United States Government makes no warranty, express or implied, in this information and its use. The user assumes all liability for any and all uses of this information. The United States Government shall not be held liable for any damages, including consequential, arising from the use of this information. These data belong to the Government. Therefore the recipient may not transfer these data to others without obtaining the permission of the Government.

Surveyed By:	Plotted By:	Checked By:

**Survey Information**  
 DEVILS\_ISLAND\_UPPER\_MISSISSIPPI  
 UM\_SL\_DIC\_20250303\_BD\_1  
 03 March 2025



**LAYERS**

- River Mile
- Sailing Line
- 9' below LWRP2014 Surface
- 12' below LWRP2014 Surface
- 14' below LWRP2014 Surface

Depths shown are below LWRP2014 Surface

**Aids to Navigation**

- Green
- Red
- Junction
- Green Buoy
- Red Buoy

**Structures and Lines**

- Training Structure
- Revetment
- Tower/Power Poles
- Electrical Lines
- Fiber Optic Lines
- Pipelines

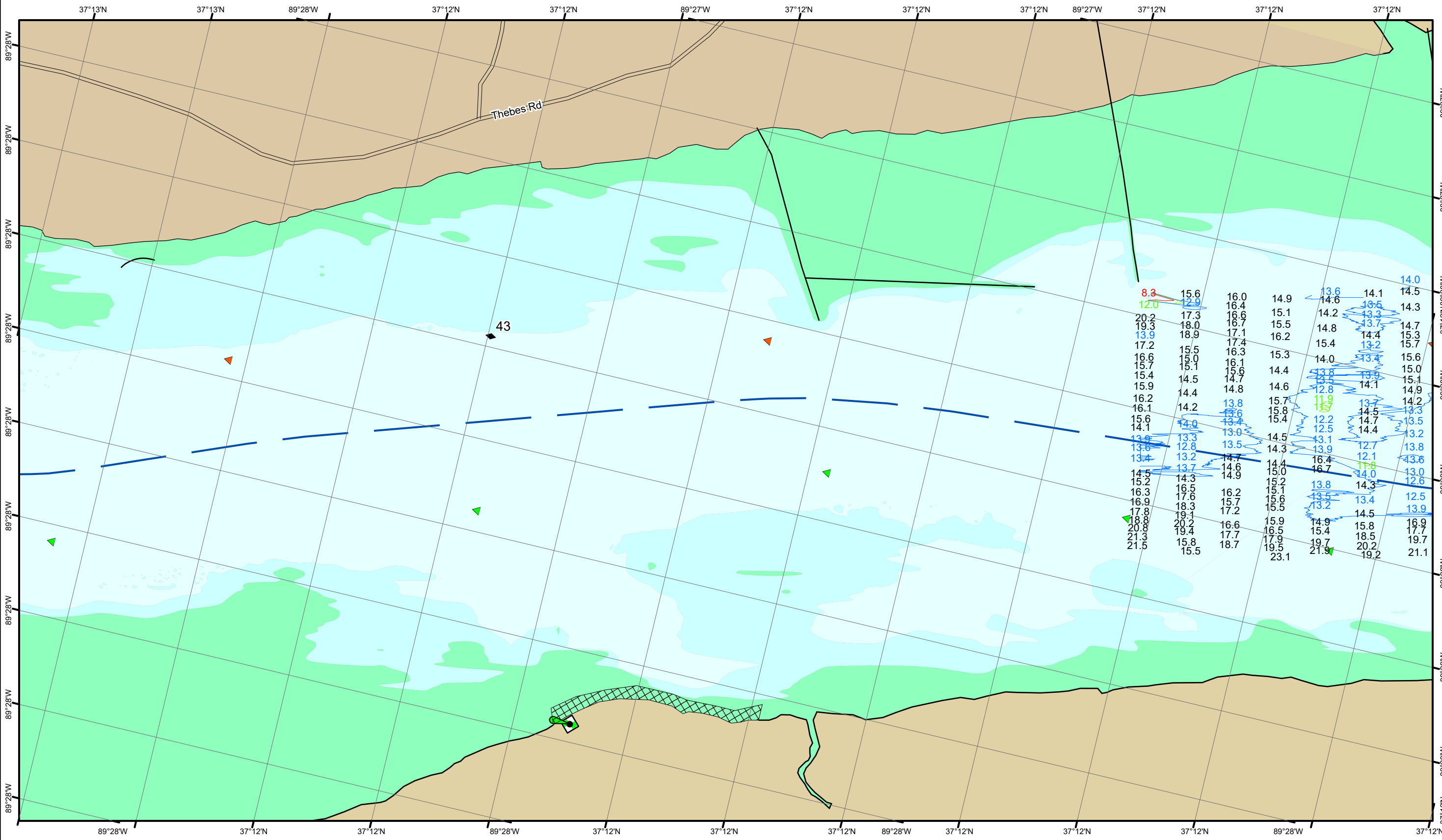
Vertical Datum:  
 Soundings are shown in feet and indicate depths below the 2014 Low Water Reference Plane.

The information depicted on this map represents the results of a survey conducted on the date indicated and can only be considered to represent the general condition existing at that time.

The location of navigation aids are based on and provided by the U.S. Coast Guard.

**Reach Number**  
 3 of 35

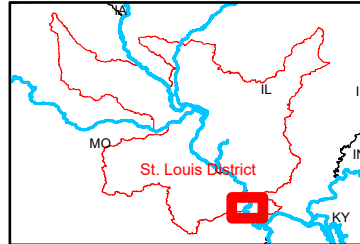
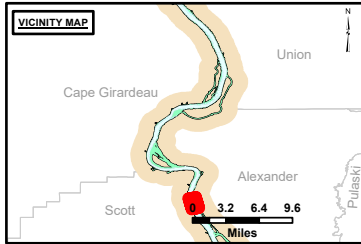




**DISCLAIMER:** The United States Government Lenders Access Constitute. The data represents the results of data collection/processing by a specific US Army Corps of Engineers project. The data is provided for informational purposes only. It is not intended for navigation. The user assumes all liability for any use of the information provided. The United States Government makes no warranty, express or implied, regarding the accuracy, reliability, or suitability for any particular purpose of the information and the data furnished. The United States Government shall be held harmless for any damages, including consequential damages, arising from the use of the information provided. The recipient may not transfer these data to others without obtaining the customer's consent.

Surveyed By	Plotted By	Checked By

**Survey Information**  
 DEVILS\_ISLAND\_UPPER\_MISSISSIPPI  
 UM\_SL\_DIC\_20250303\_BD\_1  
 03 March 2025



**LAYERS**

- River Mile
- Sailing Line
- 9' below LWRP2014 Surface
- 12' below LWRP2014 Surface
- 14' below LWRP2014 Surface

Depths shown are below LWRP2014 Surface

**Aids to Navigation**

- Green
- Red
- Junction
- Green Buoy
- Red Buoy

**Training Structure**

- Retevment
- Tower/Power Poles
- Electrical Lines
- Fiber Optic Lines
- Pipelines

Feet  
0 250 500 750 1,000

**NOTES:**  
 Horizontal Coordinate System: North American Datum of 1983 (NAD83), projected to the State Plane Coordinate System (SPCS), Missouri East Zone. Distance units in U.S. Survey Feet.  
 Vertical Datum: Soundings are shown in feet and indicate depths below the 2014 Low Water Reference Plane.  
 The information depicted on this map represents the results of a survey conducted on the date indicated and can only be considered to represent the general condition existing at that time.  
 The location of navigation aids are based on and provided by the U.S. Coast Guard.

**Reach Number**  
 4 of 35