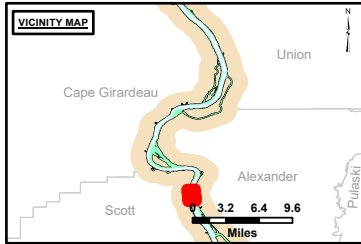


**DISCLAIMER:** The United States Government furnishes this information as a service to the public. It is not intended to be used for any purpose other than that for which it was prepared. The user assumes all liability for any use of the information other than that for which it was prepared. The United States Government makes no warranty, express or implied, as to the accuracy, reliability, or completeness of the information. The user shall be responsible for the accuracy, reliability, and completeness of the information. These data belong to the Government. Therefore the user shall not disseminate, distribute, or otherwise make these data available to the public without the written consent of the Government.

U.S. ARMY CORPS OF ENGINEERS		
Surveyed By:	Plotted By:	Checked By:

**Survey Information**  
 DEVILS\_ISLAND\_UPPER\_MISSISSIPPI  
 UM\_SL\_DIC\_20231130\_AD\_1  
 30 November 2023



**LAYERS**

- River Mile
- Sailing Line
- 9' below LWRP2014 Surface
- 12' below LWRP2014 Surface
- 14' below LWRP2014 Surface

Depths shown are below LWRP2014 Surface

**Aids to Navigation**

- Green
- Red
- Junction
- Green Buoy
- Red Buoy

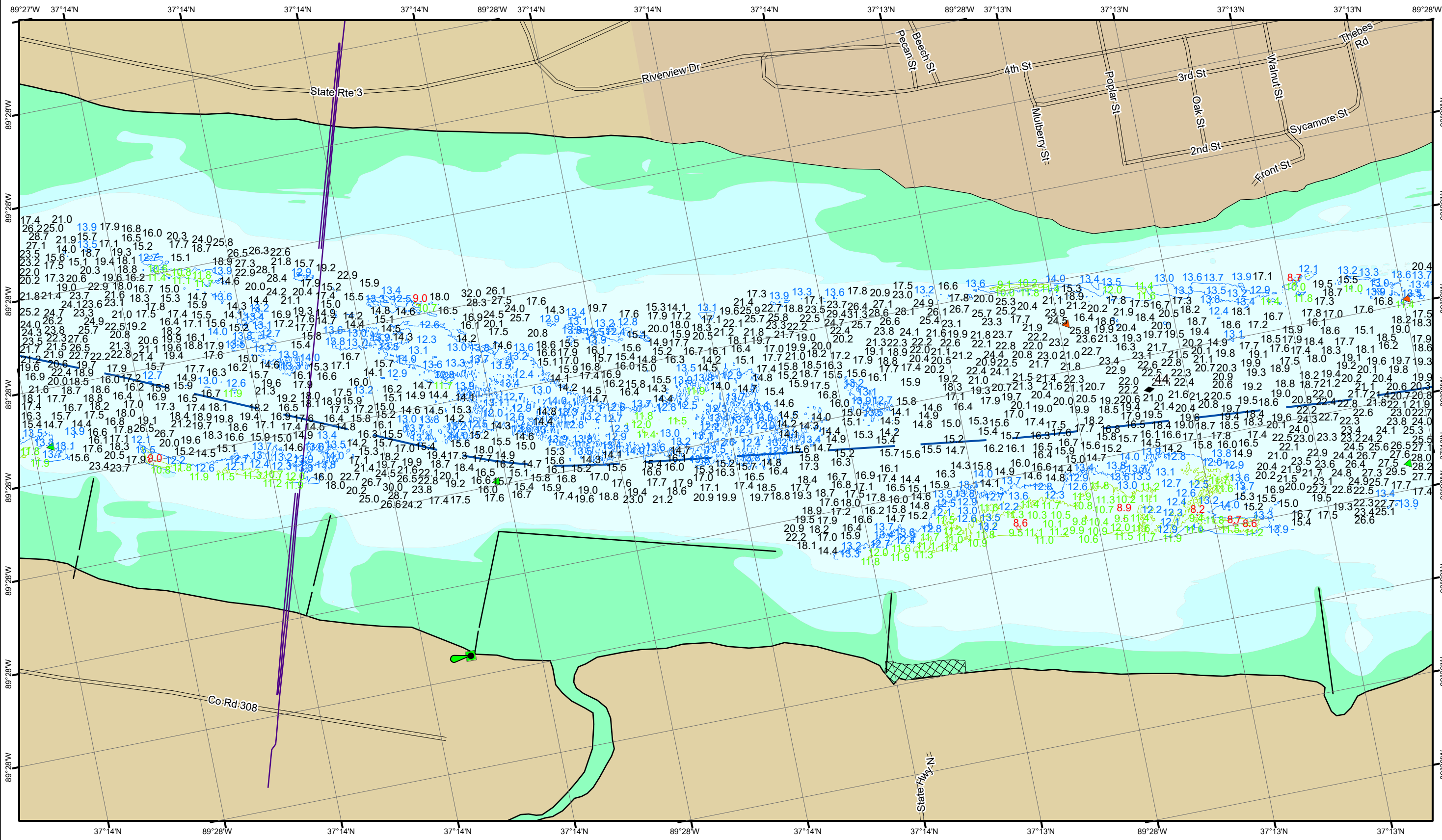
**Structures and Lines**

- Training Structure
- Revetment
- Tower/Power Poles
- Electrical Lines
- Fiber Optic Lines
- Pipelines

Scale: 0, 250, 500, 750, 1,000 Feet

**NOTES:**  
 Horizontal Coordinate System: North American Datum of 1983 (NAD83), projected to the State Plane Coordinate System (SPCS), Missouri East Zone. Distance units in U.S. Survey Feet.  
 Vertical Datum: Soundings are shown in feet and indicate depths below the 2014 Low Water Reference Plane.  
 The information depicted on this map represents the results of a survey conducted on the date indicated and can only be considered to represent the general condition existing at that time.  
 The location of navigation aids are based on and provided by the U.S. Coast Guard.

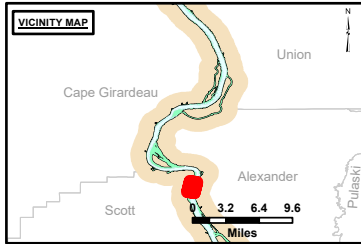
**Reach Number**  
 5 of 35



**DISCLAIMER:** The United States Government Lenders' Access to the Data does not constitute a warranty, express or implied, by the U.S. Government, or any of its agencies, of the accuracy, reliability, or completeness of the data. The data is provided for informational purposes only and should not be used for any purpose other than that intended. The user assumes all liability for any use of the data for purposes not intended by the U.S. Government. The U.S. Government shall not be held liable for any damages, including consequential damages, arising from the use of the data. The recipient may not transfer the data to others without the written consent of the U.S. Government.

Surveyed By:	Plotted By:	Checked By:

**Survey Information**  
 DEVILS\_ISLAND\_UPPER\_MISSISSIPPI  
 UM\_SL\_DIC\_20231130\_AD\_1  
 30 November 2023



**LAYERS**

- River Mile
- Sailing Line
- 9' below LWRP2014 Surface
- 12' below LWRP2014 Surface
- 14' below LWRP2014 Surface

Depths shown are below LWRP2014 Surface

**Aids to Navigation**

- Green
- Red
- Junction
- Green Buoy
- Red Buoy

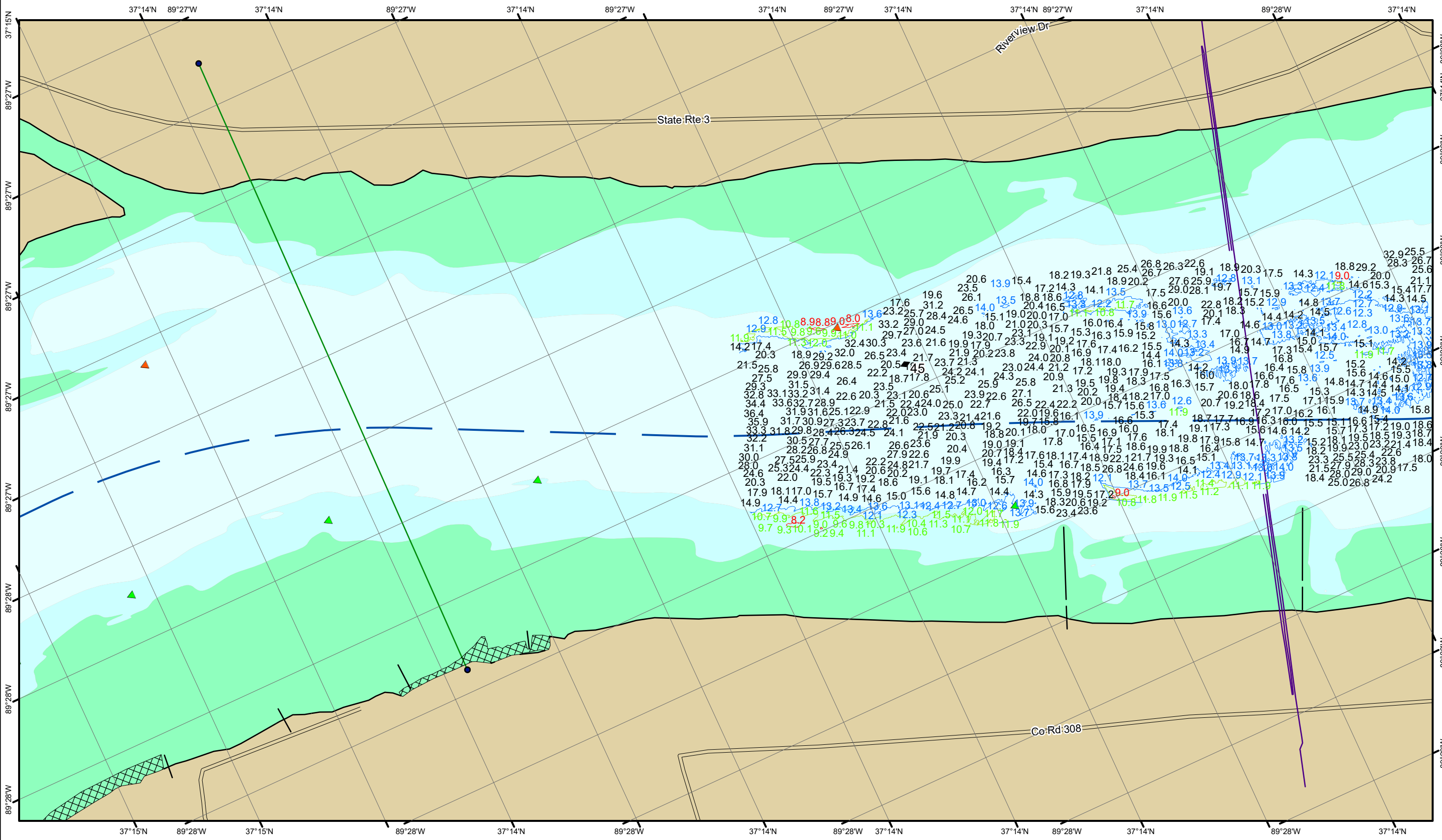
**Infrastructure**

- Training Structure
- Revetment
- Tower/Power Poles
- Electrical Lines
- Fiber Optic Lines
- Pipelines

**Scale:** 0, 250, 500, 750, 1,000 Feet

**NOTES:**  
 Horizontal Coordinate System:  
 North American Datum of 1983 (NAD83), projected to the State Plane Coordinate System (SPCS), Missouri East Zone. Distance units in U.S. Survey Feet.  
 Vertical Datum:  
 Soundings are shown in feet and indicate depths below the 2014 Low Water Reference Plane.  
 The information depicted on this map represents the results of a survey conducted on the date indicated and can only be considered to represent the general condition existing at that time.  
 The location of navigation aids are based on and provided by the U.S. Coast Guard.

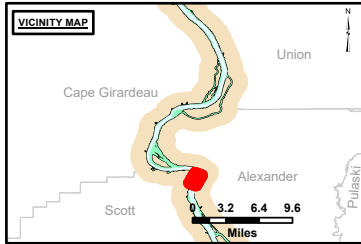
**Reach Number**  
 6 of 35



**DISCLAIMER:** The United States Government furnishes this information as a service to the public. It is not intended to be used for any purpose other than that for which it was prepared. The United States Government makes no warranty, express or implied, in this information and its use. The user assumes all liability for any damage or loss resulting from the use of this information. The United States Government shall be held harmless from any and all claims, damages, and liabilities, including reasonable attorneys' fees, arising from the use of this information. These data belong to the Government. Therefore, the recipient may not transfer these data to others without the approval of the Government. The recipient may not transfer these data to others without the approval of the Government.

U.S. ARMY CORPS OF ENGINEERS		
Surveyed By	Plotted By	Checked By

**Survey Information**  
 DEVILS\_ISLAND\_UPPER\_MISSISSIPPI  
 UM\_SL\_DIC\_20231130\_AD\_1  
 30 November 2023



**LAYERS**

- River Mile
- Sailing Line
- 9' below LWRP2014 Surface
- 12' below LWRP2014 Surface
- 14' below LWRP2014 Surface

Depths shown are below LWRP2014 Surface

**Aids to Navigation**

- Green
- Red
- Junction
- Green Buoy
- Red Buoy

**Infrastructure**

- Training Structure
- Revetment
- Tower/Power Poles
- Electrical Lines
- Fiber Optic Lines
- Pipelines

Feet  
0 250 500 750 1,000

**NOTES:**  
 Horizontal Coordinate System:  
 North American Datum of 1983 (NAD83), projected to the State Plane Coordinate System (SPCS), Missouri East Zone. Distance units in U.S. Survey Feet.  
 Vertical Datum:  
 Soundings are shown in feet and indicate depths below the 2014 Low Water Reference Plane.  
 The information depicted on this map represents the results of a survey conducted on the date indicated and can only be considered to represent the general condition existing at that time.  
 The location of navigation aids are based on and provided by the U.S. Coast Guard.

**Reach Number**  
 7 of 35