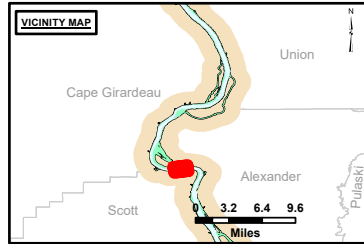


**DISCLAIMER:** The United States Government Lenders Access Agreement. The data represents the results of data collection/surveying by a specific US Army Corps of Engineers District. The data is provided for informational purposes only and does not constitute a warranty. The user assumes all liability for any use of this data for other than the intended purpose.

**WARRANTY:** The United States Government Lenders Access Agreement. The data represents the results of data collection/surveying by a specific US Army Corps of Engineers District. The data is provided for informational purposes only and does not constitute a warranty. The user assumes all liability for any use of this data for other than the intended purpose.

U.S. ARMY CORPS OF ENGINEERS		
Surveyed By:	Plotted By:	Checked By:

**Survey Information**  
 DEVILS\_ISLAND\_UPPER\_MISSISSIPPI  
 UM\_SL\_DIC\_20231120\_AD\_2  
 20 November 2023



**LAYERS**

- River Mile
- Sailing Line
- 9' below LWRP2014 Surface
- 12' below LWRP2014 Surface
- 14' below LWRP2014 Surface
- Depths shown are below LWRP2014 Surface

**Aids to Navigation**

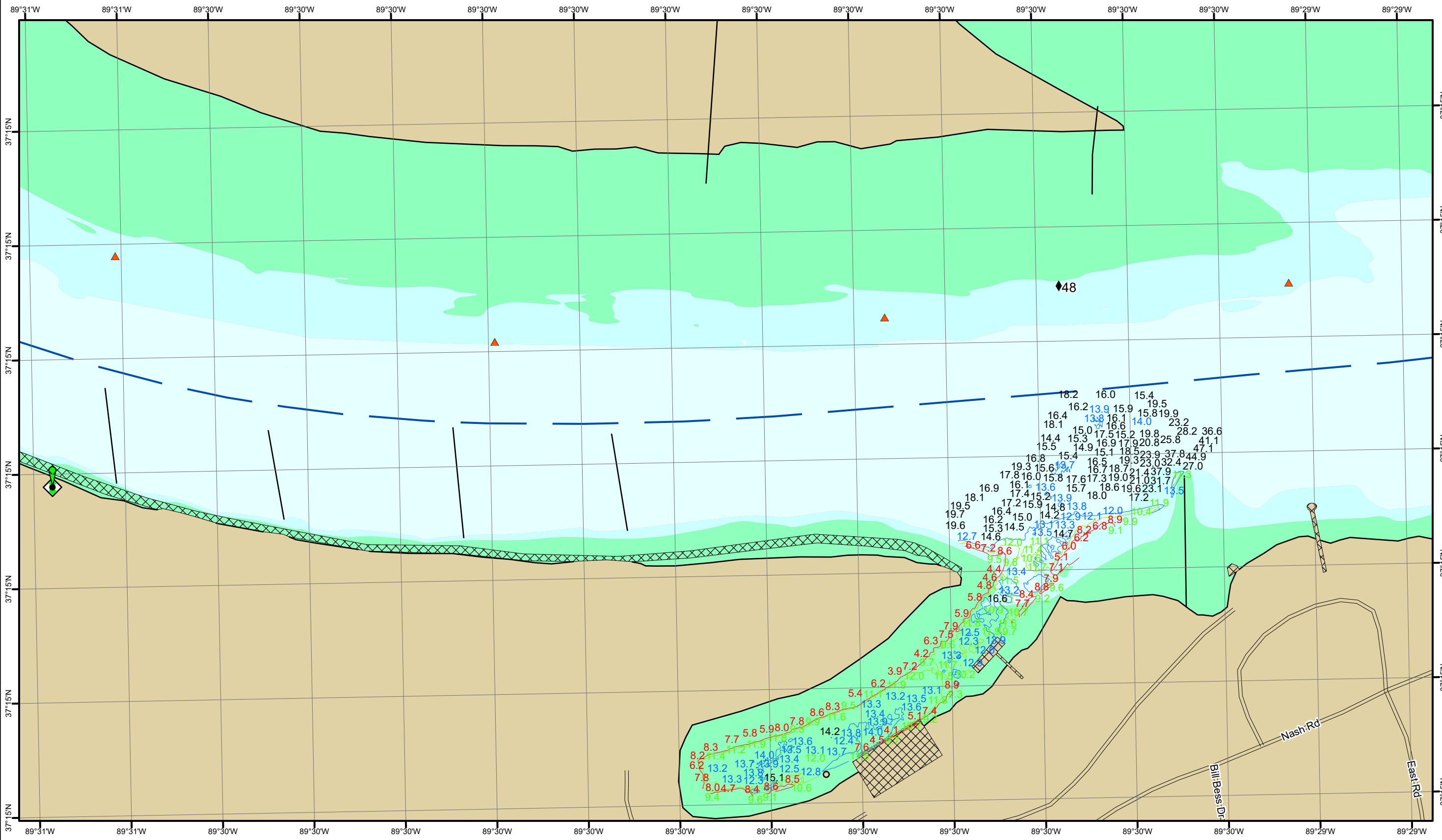
- Green
- Red
- Junction
- Green Buoy
- Red Buoy
- Training Structure
- Revetment
- Tower/Power Poles
- Electrical Lines
- Fiber Optic Lines
- Pipelines

**NOTES:**  
 Horizontal Coordinate System:  
 North American Datum of 1983 (NAD83), projected to the State Plane Coordinate System (SPCS), Missouri East Zone. Distance units in U.S. Survey Feet.

Vertical Datum:  
 Soundings are shown in feet and indicate depths below the 2014 Low Water Reference Plane.

The information depicted on this map represents the results of a survey conducted on the date indicated and can only be considered to represent the general condition existing at that time.

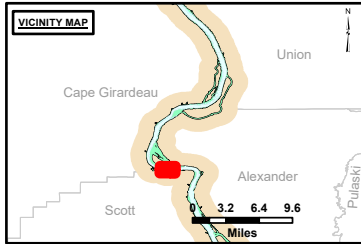
The location of navigation aids are based on and provided by the U.S. Coast Guard.



**DISCLAIMER:** The United States Government furnishes this information as a service to the user. It is not intended to be used for any purpose other than that for which it was prepared. The user assumes all liability for any use of the information other than that for which it was prepared. The United States Government makes no warranty, express or implied, as to the accuracy, reliability, or completeness of the information furnished. The United States Government shall be held harmless for any damage or loss resulting from the use of the information furnished. These data belong to the Government. Therefore, the recipient may not transfer these data to others without obtaining the permission of the Government.

U.S. ARMY CORPS OF ENGINEERS		
Surveyed By:	Plotted By:	Checked By:
Number:	Document:	Approved:

**Survey Information**  
 DEVILS\_ISLAND\_UPPER\_MISSISSIPPI  
 UM\_SL\_DIC\_20231120\_AD\_2  
 20 November 2023



**LAYERS**

- ◆ River Mile
- Sailing Line
- 9' below LWRP2014 Surface
- 12' below LWRP2014 Surface
- 14' below LWRP2014 Surface

Depths shown are below LWRP2014 Surface

**Aids to Navigation**

- Green
- Red
- Junction
- ▲ Green Buoy
- ▲ Red Buoy

**Infrastructure**

- Training Structure
- ▣ Revetment
- Tower/Power Poles
- Electrical Lines
- Fiber Optic Lines
- Pipelines

North arrow and scale bar (0 to 1,000 feet).

**NOTES:**  
 Horizontal Coordinate System:  
 North American Datum of 1983 (NAD83), projected to the State Plane Coordinate System (SPCS), Missouri East Zone. Distance units in U.S. Survey Feet.  
 Vertical Datum:  
 Soundings are shown in feet and indicate depths below the 2014 Low Water Reference Plane.  
 The information depicted on this map represents the results of a survey conducted on the date indicated and can only be considered to represent the general condition existing at that time.  
 The location of navigation aids are based on and provided by the U.S. Coast Guard.

**Reach Number**  
 11 of 35