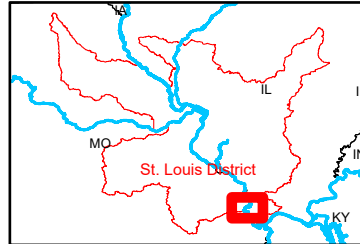
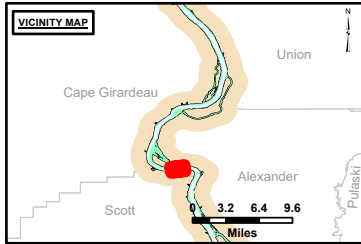


DISCLAIMER: The United States Government furnishes this information as a service to the public and does not warrant, represent, or guarantee the accuracy, completeness, or reliability of the information. The user shall be responsible for the use of the information and shall indemnify and hold the United States Government harmless from any and all claims, damages, and expenses, including reasonable attorneys' fees, that may be asserted against or incurred by the United States Government or any of its employees or agents in connection with the use of the information. These data belong to the Government. Therefore, the recipient may not transfer, disseminate, or otherwise use these data to others without the approval of the Government.

U.S. ARMY CORPS OF ENGINEERS		
Surveyed By:	Plotted By:	Checked By:
Number:	Documented:	Approved:

Survey Information
 DEVILS_ISLAND_UPPER_MISSISSIPPI
 UM_SL_DIC_20231012_BD_1
 12 October 2023



LAYERS

- River Mile
- Sailing Line
- 9' below LWRP2014 Surface
- 12' below LWRP2014 Surface
- 14' below LWRP2014 Surface

Depths shown are below LWRP2014 Surface

Aids to Navigation

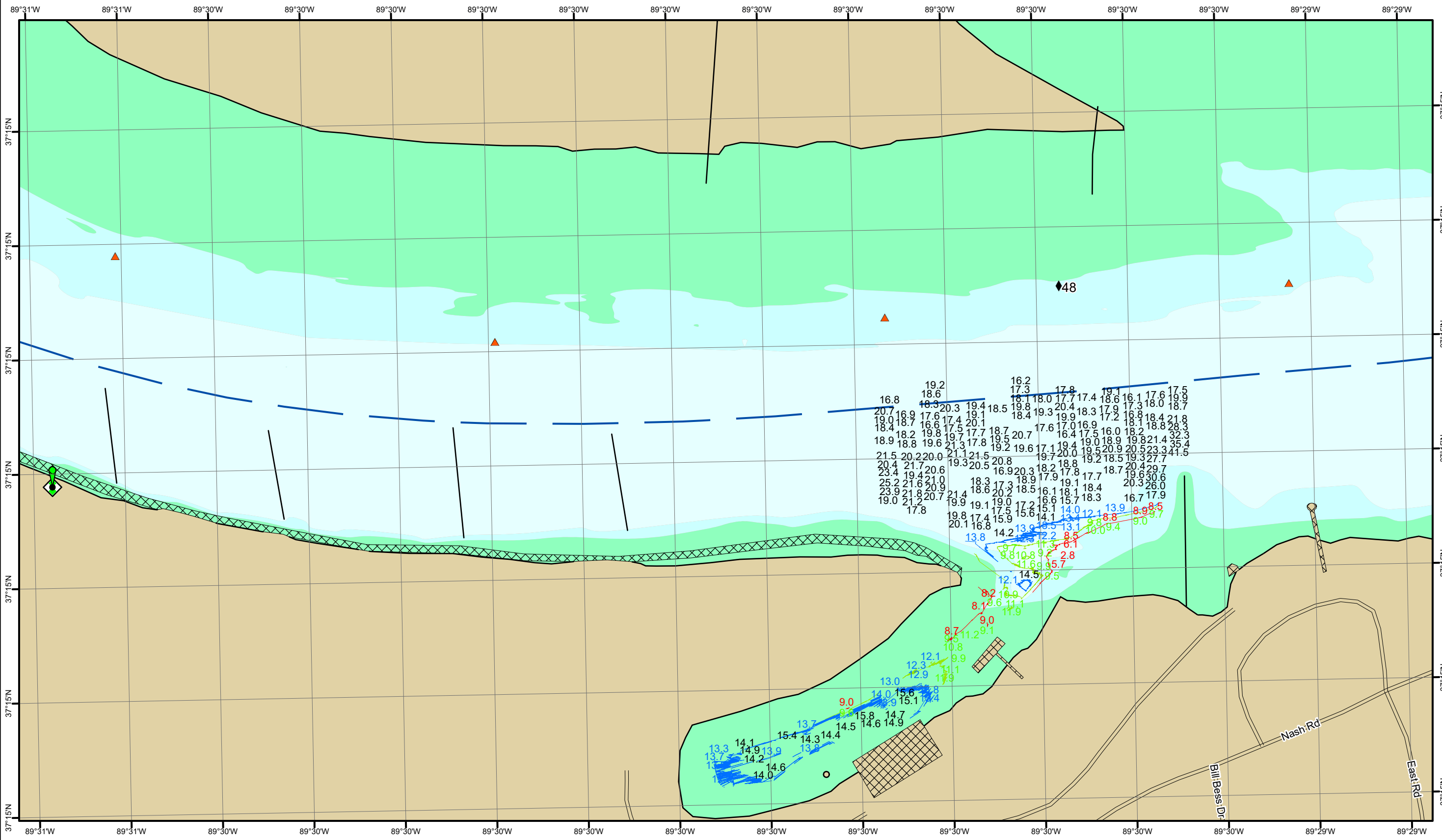
- Green
- Red
- Junction
- Green Buoy
- Red Buoy

Infrastructure

- Training Structure
- Revetment
- Tower/Power Poles
- Electrical Lines
- Fiber Optic Lines
- Pipelines

Compass rose and scale bar (0 to 1,000 feet).

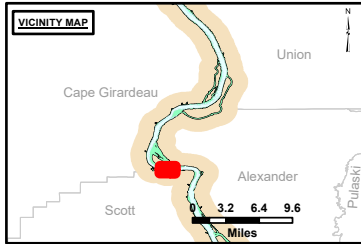
NOTES:
 Horizontal Coordinate System:
 North American Datum of 1983 (NAD83), projected to the State Plane Coordinate System (SPCS), Missouri East Zone. Distance units in U.S. Survey Feet.
 Vertical Datum:
 Soundings are shown in feet and indicate depths below the 2014 Low Water Reference Plane.
 The information depicted on this map represents the results of a survey conducted on the date indicated and can only be considered to represent the general condition existing at that time.
 The location of navigation aids are based on and provided by the U.S. Coast Guard.



DISCLAIMER: The United States Government furnishes this information as a service to the public. It is not intended to be used for any purpose other than that for which it was prepared. The United States Government makes no warranty, express or implied, as to the accuracy, reliability, or completeness of the information. The user assumes all liability for any use of the information other than that for which it was prepared. These data belong to the Government. Therefore, the recipient may not transfer these data to others without the approval of the Government.

U.S. ARMY CORPS OF ENGINEERS		
Surveyed By:	Plotted By:	Checked By:
Number:	Documented:	Approved:

Survey Information
 DEVILS_ISLAND_UPPER_MISSISSIPPI
 UM_SL_DIC_20231012_BD_1
 12 October 2023



LAYERS

- River Mile
- Sailing Line
- 9' below LWRP2014 Surface
- 12' below LWRP2014 Surface
- 14' below LWRP2014 Surface

Depths shown are below LWRP2014 Surface

Aids to Navigation

- Green
- Red
- Junction
- Green Buoy
- Red Buoy

Training Structure

- Retevment
- Tower/Power Poles
- Electrical Lines
- Fiber Optic Lines
- Pipelines

North arrow and scale bar (0 to 1,000 Feet).

NOTES:
 Horizontal Coordinate System: North American Datum of 1983 (NAD83), projected to the State Plane Coordinate System (SPCS), Missouri East Zone. Distance units in U.S. Survey Feet.
 Vertical Datum: Soundings are shown in feet and indicate depths below the 2014 Low Water Reference Plane.
 The information depicted on this map represents the results of a survey conducted on the date indicated and can only be considered to represent the general condition existing at that time.
 The location of navigation aids are based on and provided by the U.S. Coast Guard.

Reach Number
 11 of 35