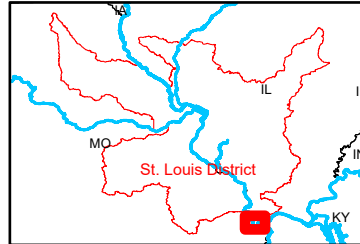
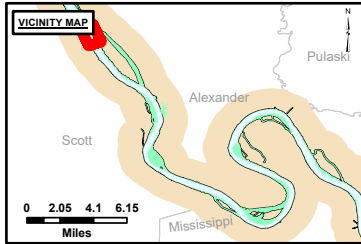


**DISCLAIMER:** The United States Government Lenders and/or guarantors of the U.S. Government makes no warranty, express or implied, as to the accuracy, completeness, or reliability of the data for any particular purpose of the user. The user shall be responsible for the use of the data for any purpose other than that intended by the Government. These data belong to the Government. Therefore, the user shall not disseminate, copy, or otherwise use these data to others without obtaining the necessary permission from the Government.

U.S. ARMY CORPS OF ENGINEERS		
Surveyed By:	Plotted By:	Checked By:

**Survey Information**  
 DOGTOOTH\_BEND\_UPPER\_MISSISSIPPI  
 UM\_SL\_DBC\_20240829\_BD\_3  
 29 August 2024



**LAYERS**

- River Mile
- Sailing Line
- 9' below LWRP2014 Surface
- 12' below LWRP2014 Surface
- 14' below LWRP2014 Surface

Depths shown are below LWRP2014 Surface

**Aids to Navigation**

- Green
- Red
- Junction
- Green Buoy
- Red Buoy

**Structures and Lines**

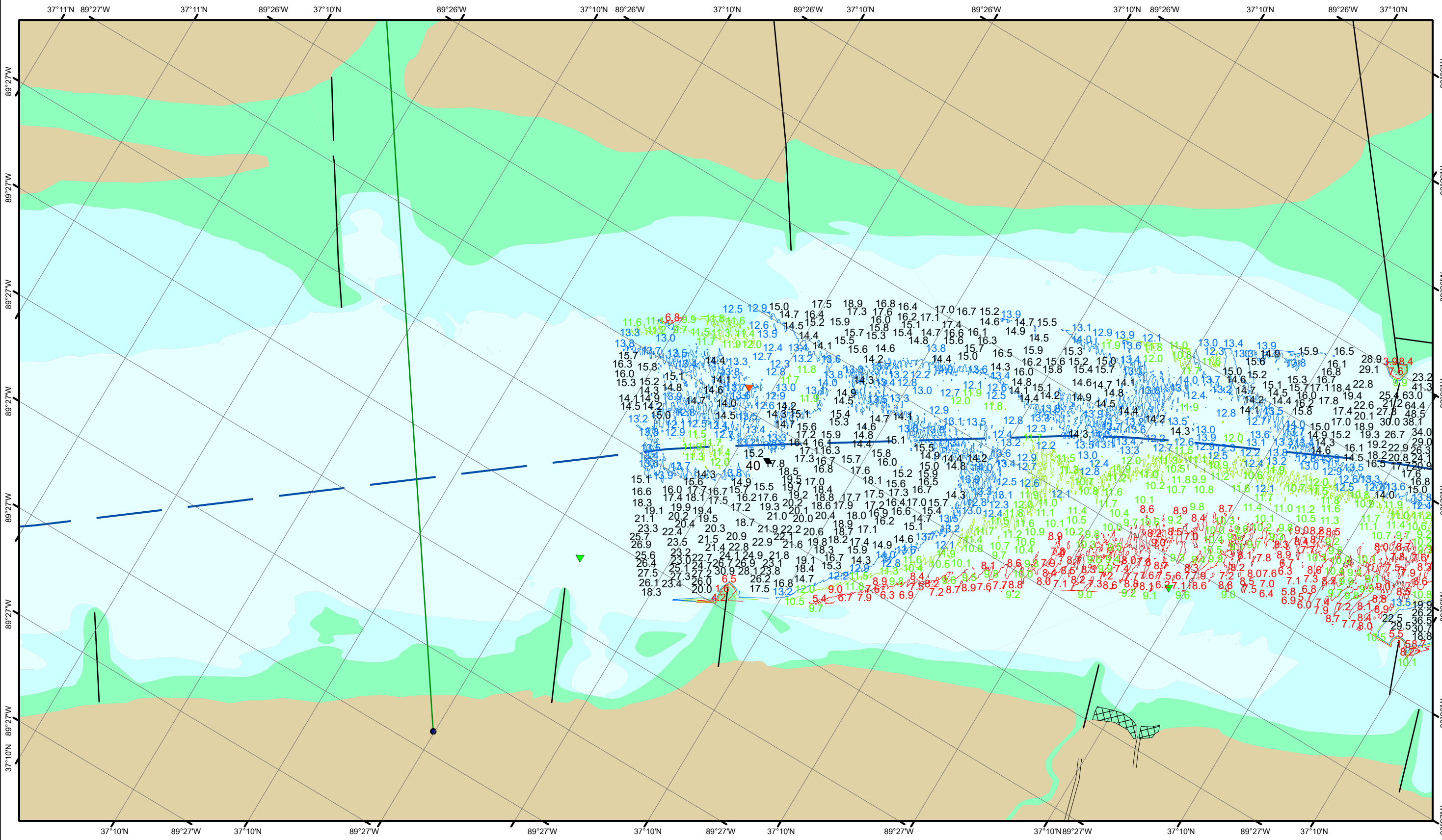
- Training Structure
- Revetment
- Tower/Power Poles
- Electrical Lines
- Fiber Optic Lines
- Pipelines

Feet

**NOTES:**  
 Horizontal Coordinate System:  
 North American Datum of 1983 (NAD83), projected to the State Plane Coordinate System (SPCS), Missouri East Zone. Distance units in U.S. Survey Feet.  
 Vertical Datum:  
 Soundings are shown in feet and indicate depths below the 2014 Low Water Reference Plane.  
 The information depicted on this map represents the results of a survey conducted on the date indicated and can only be considered to represent the general condition existing at that time.  
 The location of navigation aids are based on and provided by the U.S. Coast Guard.

**Reach Number**  
 26 of 27

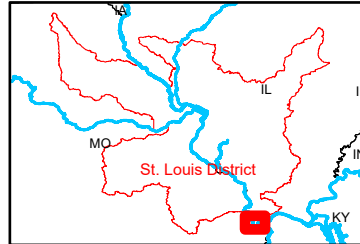
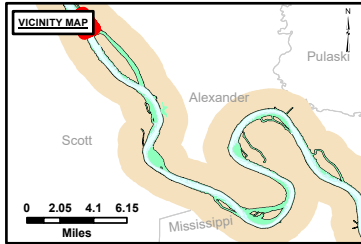




**DISCLAIMER:** The United States Government Lenders and/or guarantors of the U.S. Army Corps of Engineers. The data presented in this map is for informational purposes only. It is not intended to be used for navigation or other purposes. The Corps of Engineers makes no warranty, express or implied, as to the accuracy, completeness, or reliability of the data. The user assumes all liability for any use of the data for any purpose other than that intended by the Corps of Engineers. The data is provided as a service to the user and is not to be used for any purpose other than that intended by the Corps of Engineers. The data is provided as a service to the user and is not to be used for any purpose other than that intended by the Corps of Engineers.

Surveyed By:	Plotted By:	Checked By:

**Survey Information**  
 DOGTOOTH\_BEND\_UPPER\_MISSISSIPPI  
 UM\_SL\_DBC\_20240829\_BD\_3  
 29 August 2024



**LAYERS**

- River Mile
- Sailing Line
- 9' below LWRP2014 Surface
- 12' below LWRP2014 Surface
- 14' below LWRP2014 Surface

Depths shown are below LWRP2014 Surface

**Aids to Navigation**

- Green
- Red
- Junction
- Green Buoy
- Red Buoy

**Training Structure**

- Revetment
- Tower/Power Poles
- Electrical Lines
- Fiber Optic Lines
- Pipelines

Feet

0 250 500 750 1,000

**NOTES:**  
 Horizontal Coordinate System:  
 North American Datum of 1983 (NAD83), projected to the State Plane Coordinate System (SPCS), Missouri East Zone. Distance units in U.S. Survey Feet.  
 Vertical Datum:  
 Soundings are shown in feet and indicate depths below the 2014 Low Water Reference Plane.  
 The information depicted on this map represents the results of a survey conducted on the date indicated and can only be considered to represent the general condition existing at that time.  
 The location of navigation aids are based on and provided by the U.S. Coast Guard.

**Reach Number**  
 27 of 27