

LAYERS

- River Mile
- Sailing Line
- 9' below LWRP2014 Surface
- 12' below LWRP2014 Surface
- 14' below LWRP2014 Surface

Depths shown are below LWRP2014 Surface

Aids to Navigation

- Green
- Red
- Junction
- Green Buoy
- Red Buoy

Structures

- Training Structure
- Revetment
- Tower/Power Poles
- Electrical Lines
- Fiber Optic Lines
- Pipelines

Scale: 0, 250, 500, 750, 1,000 Feet

NOTES:
 Horizontal Coordinate System:
 North American Datum of 1983 (NAD83), projected to the State Plane Coordinate System (SPCS), Missouri East Zone. Distance units in U.S. Survey Feet.
 Vertical Datum:
 Soundings are shown in feet and indicate depths below the 2014 Low Water Reference Plane.
 The information depicted on this map represents the results of a survey conducted on the date indicated and can only be considered to represent the general condition existing at that time.
 The location of navigation aids are based on and provided by the U.S. Coast Guard.

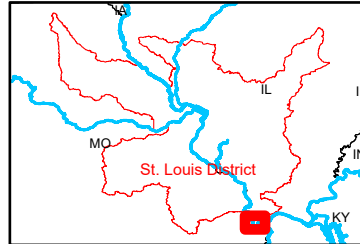
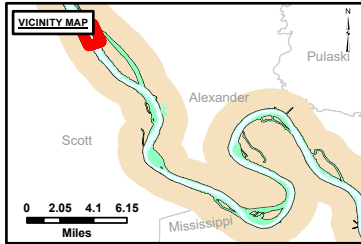
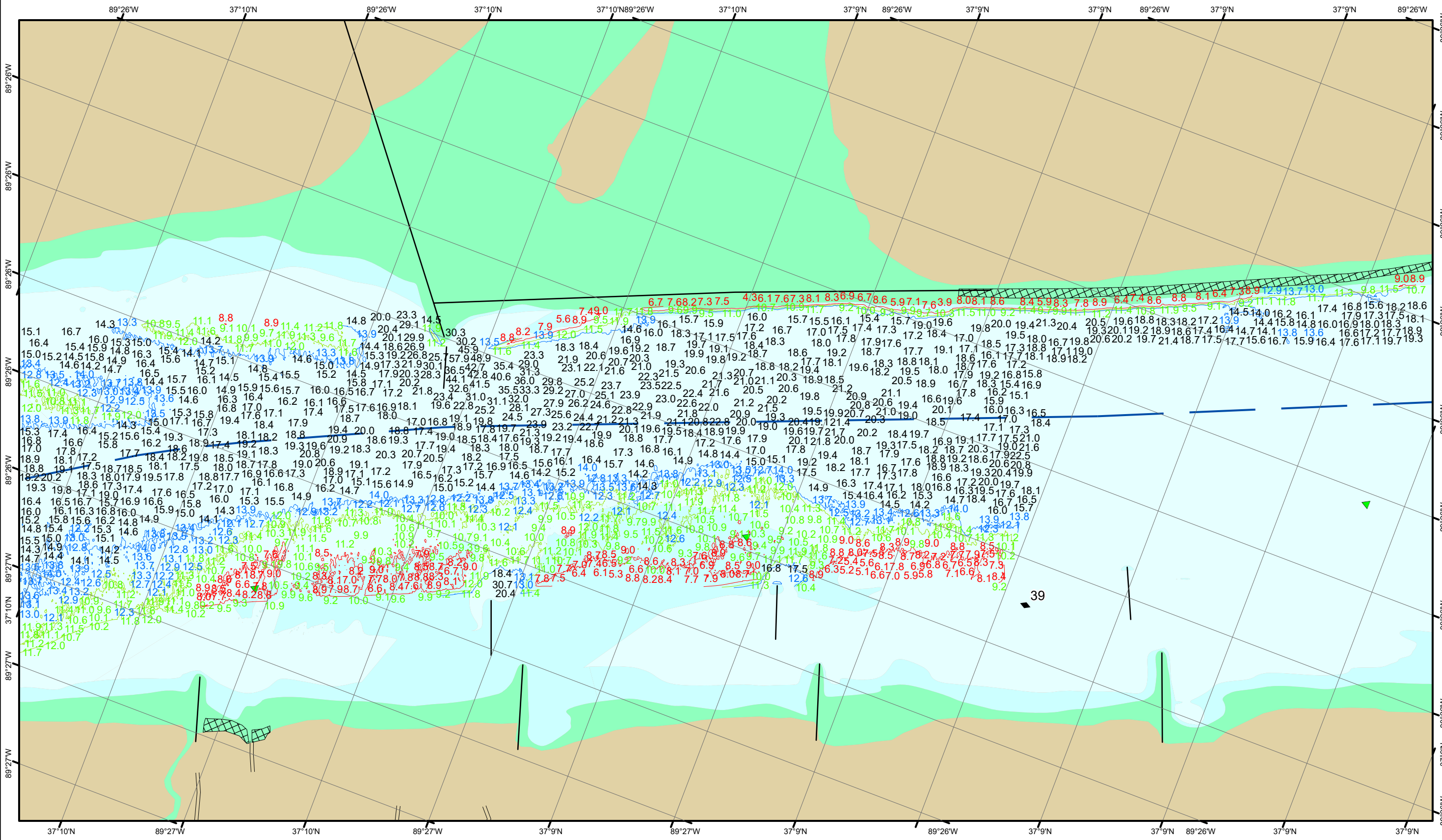


DISCLAIMER: The United States Government neither warrants nor makes any representation, express or implied, regarding the accuracy, reliability, or completeness of any information or data furnished. The United States Government shall be held harmless for any damages, including consequential damages, arising from the use of the information or data furnished. These data belong to the Government. Therefore, the recipient may not transfer these data to others without the approval of the Government.

U.S. ARMY CORPS OF ENGINEERS		
Surveyed By:	Plotted By:	Checked By:

Survey Information
 DOGTOOTH_BEND_UPPER_MISSISSIPPI
 UM_SL_DBC_20231107_AD_1
 07 November 2023

Reach Number
 25 of 27



LAYERS

- River Mile
- Sailing Line
- 9' below LWRP2014 Surface
- 12' below LWRP2014 Surface
- 14' below LWRP2014 Surface

Depths shown are below LWRP2014 Surface

Aids to Navigation

- Green
- Red
- Junction
- Green Buoy
- Red Buoy

Training Structure

- Revetment
- Tower/Power Poles
- Electrical Lines
- Fiber Optic Lines
- Pipelines

Scale: 0, 250, 500, 750, 1,000 Feet

NOTES:
 Horizontal Coordinate System:
 North American Datum of 1983 (NAD83), projected to the State Plane Coordinate System (SPCS), Missouri East Zone. Distance units in U.S. Survey Feet.
 Vertical Datum:
 Soundings are shown in feet and indicate depths below the 2014 Low Water Reference Plane.
 The information depicted on this map represents the results of a survey conducted on the date indicated and can only be considered to represent the general condition existing at that time.
 The location of navigation aids are based on and provided by the U.S. Coast Guard.

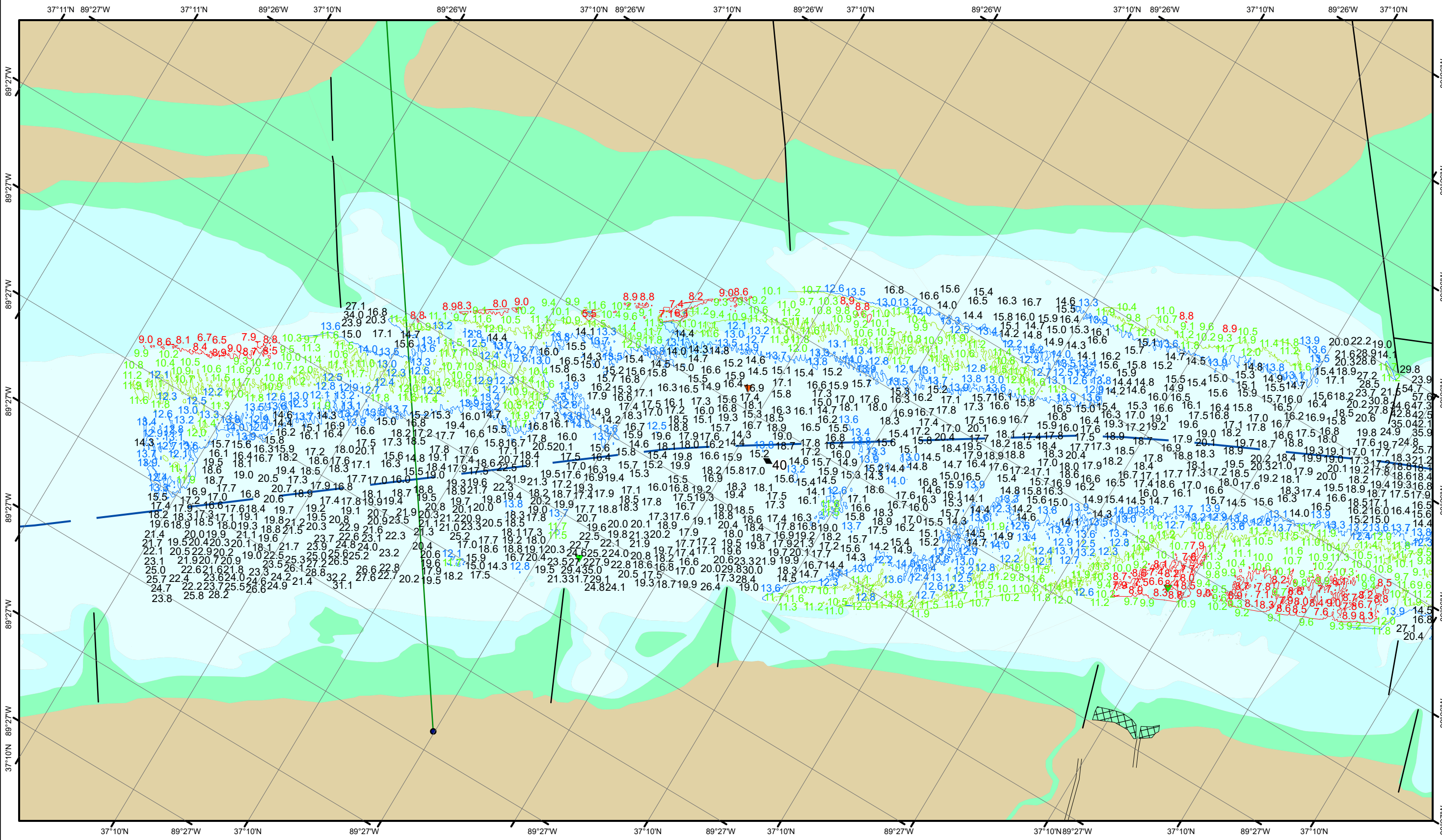


DISCLAIMER: The United States Government Lenders...
 The data presented in this map is the result of a survey conducted on the date indicated and can only be considered to represent the general condition existing at that time. The location of navigation aids are based on and provided by the U.S. Coast Guard.

U.S. ARMY CORPS OF ENGINEERS		
Surveyed By:	Plotted By:	Checked By:

Survey Information
 DOGTOOTH_BEND_UPPER_MISSISSIPPI
 UM_SL_DBC_20231107_AD_1
 07 November 2023

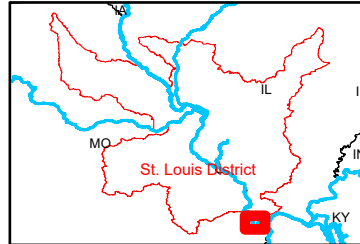
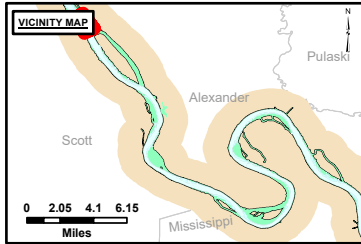
Reach Number
 26 of 27



DISCLAIMER: The United States Government Lenders' Responsibility Act of 1990 (Public Law 101-519) prohibits the United States Government from making any warranty, express or implied, regarding the accuracy, reliability, or completeness of any information or data provided by the Government. The recipient of this information shall be responsible for verifying the accuracy, reliability, or completeness of any information or data provided by the Government. The recipient may not transfer this data to others without obtaining the permission of the donor.

Surveyed By:	Plotted By:	Checked By:

Survey Information
 DOGTOOTH_BEND_UPPER_MISSISSIPPI
 UM_SL_DBC_20231107_AD_1
 07 November 2023



LAYERS

- River Mile
- Sailing Line
- 9' below LWRP2014 Surface
- 12' below LWRP2014 Surface
- 14' below LWRP2014 Surface

Depths shown are below LWRP2014 Surface

Aids to Navigation

- Green
- Red
- Junction
- Green Buoy
- Red Buoy

Structures and Lines

- Training Structure
- Revetment
- Tower/Power Poles
- Electrical Lines
- Fiber Optic Lines
- Pipelines

Scale: 0, 250, 500, 750, 1,000 Feet

NOTES:
 Horizontal Coordinate System:
 North American Datum of 1983 (NAD83), projected to the State Plane Coordinate System (SPCS), Missouri East Zone. Distance units in U.S. Survey Feet.
 Vertical Datum:
 Soundings are shown in feet and indicate depths below the 2014 Low Water Reference Plane.
 The information depicted on this map represents the results of a survey conducted on the date indicated and can only be considered to represent the general condition existing at that time.
 The location of navigation aids are based on and provided by the U.S. Coast Guard.

Reach Number
 27 of 27