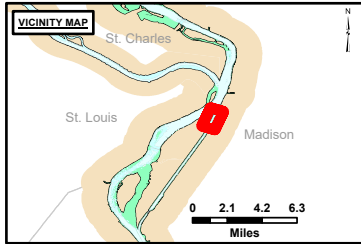


DISCLAIMER: The United States Government furnishes this information as a service to the public. It is not intended to be used for any purpose other than that for which it was prepared. The United States Government makes no warranty, express or implied, as to the accuracy, reliability, or completeness of the information furnished. The United States Government shall be held harmless for any loss or damage, including consequential damages, resulting from the use of the information furnished. These data belong to the Government. Therefore, the recipient may not transfer these data to others, without obtaining the permission of the U.S. Army Corps of Engineers.

U.S. ARMY CORPS OF ENGINEERS		
Surveyed By:	Plotted By:	Checked By:
Number:	Document:	Approved:

Survey Information
 MOSENTHIN_REACH_UPPER_MISSISSIPPI
 UM_SL_MRC_20230928_BD_1
 28 September 2023



LAYERS

- River Mile
- Sailing Line
- 9' below LWRP2014 Surface
- 12' below LWRP2014 Surface
- 14' below LWRP2014 Surface

Depths shown are below LWRP2014 Surface

Aids to Navigation

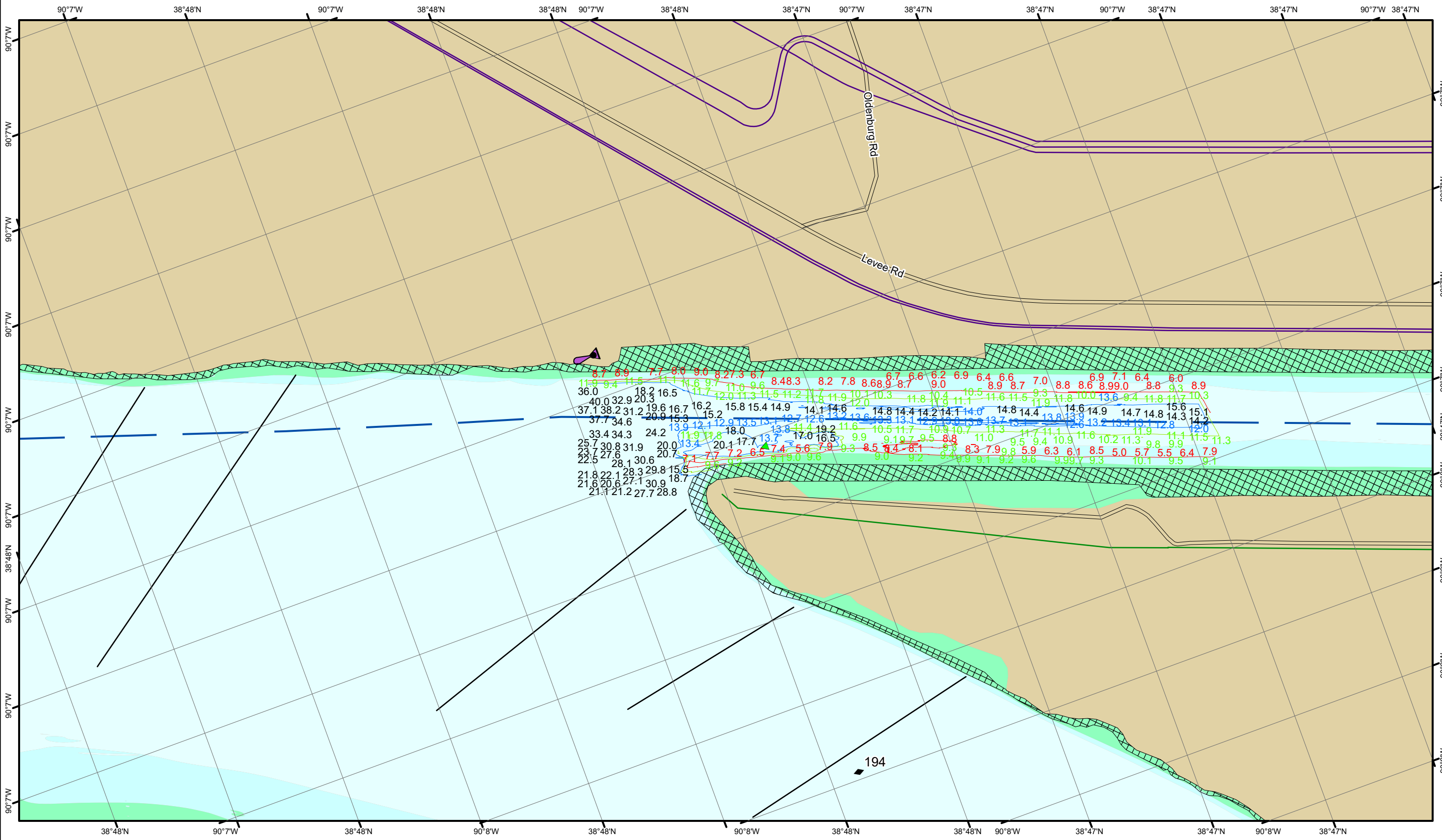
- Green
- Red
- Junction
- Green Buoy
- Red Buoy

Infrastructure

- Training Structure
- Revetment
- Tower/Power Poles
- Electrical Lines
- Fiber Optic Lines
- Pipelines

Feet
0 250 500 750 1,000

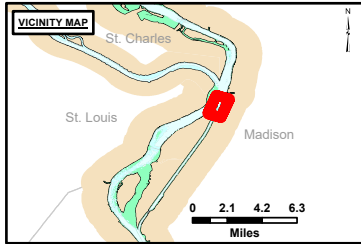
NOTES:
 Horizontal Coordinate System: North American Datum of 1983 (NAD83), projected to the State Plane Coordinate System (SPCS), Missouri East Zone. Distance units in U.S. Survey Feet.
 Vertical Datum: Soundings are shown in feet and indicate depths below the 2014 Low Water Reference Plane.
 The information depicted on this map represents the results of a survey conducted on the date indicated and can only be considered to represent the general condition existing at that time.
 The location of navigation aids are based on and provided by the U.S. Coast Guard.



DISCLAIMER: The United States Government Lend Lease Program is not intended to constitute an offer, recommendation, or endorsement of any product or service by the U.S. Government. The data presented in this map is for informational purposes only and is not intended to be used for navigation. The U.S. Government makes no warranty, express or implied, as to the accuracy, reliability, or completeness of the information provided. The user shall be responsible for the use of the information provided. These data belong to the Government. Therefore, the recipient may not transfer these data to others without the approval of the Government.

U.S. ARMY CORPS OF ENGINEERS		
Surveyed By:	Plotted By:	Checked By:
Number:	Document:	Approved:

Survey Information
 MOSENTHIN_REACH_UPPER_MISSISSIPPI
 UM_SL_MRC_20230928_BD_1
 28 September 2023



LAYERS

- River Mile
- Sailing Line
- 9' below LWRP2014 Surface
- 12' below LWRP2014 Surface
- 14' below LWRP2014 Surface

Depths shown are below LWRP2014 Surface

Aids to Navigation

- Green
- Red
- Junction
- Green Buoy
- Red Buoy

Training Structure

- Revetment
- Tower/Power Poles
- Electrical Lines
- Fiber Optic Lines
- Pipelines

Scale: 0, 250, 500, 750, 1,000 Feet

NOTES:
 Horizontal Coordinate System: North American Datum of 1983 (NAD83), projected to the State Plane Coordinate System (SPCS), Missouri East Zone. Distance units in U.S. Survey Feet.
 Vertical Datum: Soundings are shown in feet and indicate depths below the 2014 Low Water Reference Plane.
 The information depicted on this map represents the results of a survey conducted on the date indicated and can only be considered to represent the general condition existing at that time.
 The location of navigation aids are based on and provided by the U.S. Coast Guard.

Reach Number
 11 of 19