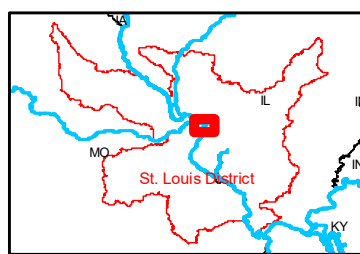
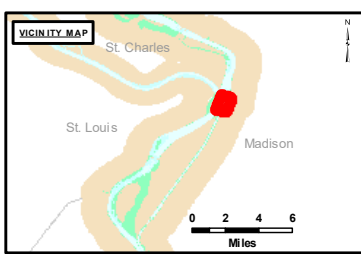


**DISCLAIMER:** The U.S. Army Corps of Engineers provides this information for informational purposes only. It is not intended for navigation. The Corps does not warrant the accuracy, completeness, or timeliness of the information. The user assumes all liability for any use of this information. The Corps is not responsible for any damage or loss resulting from the use of this information.

U.S. ARMY CORPS OF ENGINEERS ST. LOUIS DISTRICT		
Submitted By:	Reviewed By:	Checked By:

**Survey Information**  
 MOSENTHAIN\_REACH\_UPPER\_MISSISSIPPI  
 UM\_SL\_MRC\_20230629\_ED\_2  
 29 June 2023



**LAYERS**

- River Mile
- Sailing Line
- 9' below LWRP2014 Surface
- 12' below LWRP2014 Surface
- 14' below LWRP2014 Surface

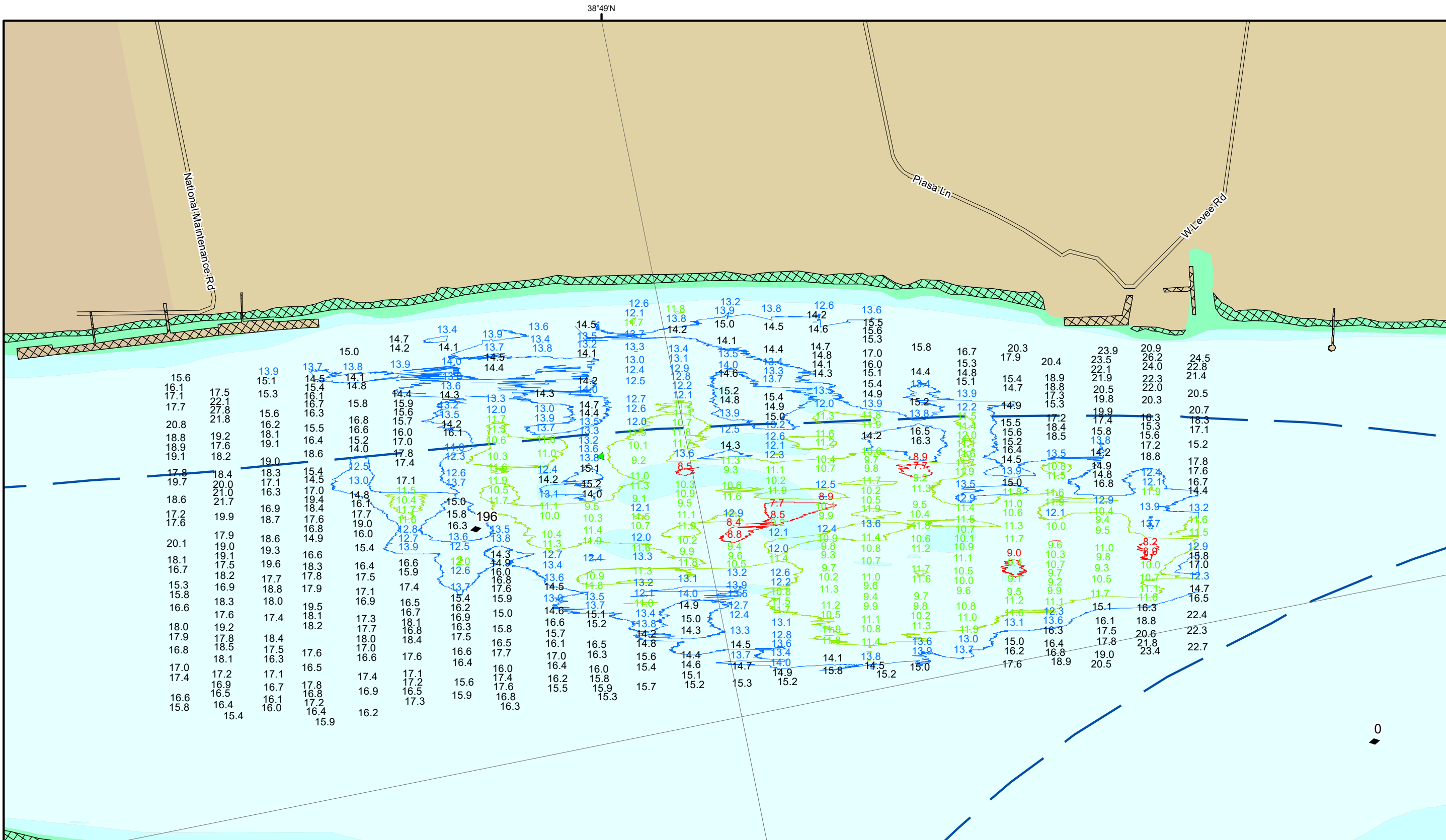
Depths shown are below LWRP2014 Surface

**Aids to Navigation**

- Green
- Red
- Junction
- Green Buoy
- Red Buoy
- Training Structure
- Revetment

**NOTES:**  
 Horizontal Coordinate System:  
 North American Datum of 1983 (NAD83), projected to the State Plane Coordinate System (SPCS), Missouri East Zone. Distance units in U.S. Survey Feet.  
 Vertical Datum:  
 Soundings are shown in feet and indicate depths below the 2014 Low Water Reference Plane.  
 The information depicted on this map represents the results of a survey conducted on the date indicated and can only be considered to represent the general condition existing at that time.  
 The location of navigation aids are based on and provided by the U.S. Coast Guard.

**Reach Number**  
 12 of 19



**DISCLAIMER:** The U.S. Army Corps of Engineers provides this information for informational purposes only. It is not intended to be used for navigation or other purposes. The Corps of Engineers makes no warranty, express or implied, regarding the accuracy, completeness, or timeliness of the information. The user assumes all liability for any use of this information. The Corps of Engineers is not responsible for any errors or omissions in this information.

Surveyed By	Reviewed By	Checked By

**Survey Information**  
 MOSENTHEN\_REACH\_UPPER\_MISSISSIPPI  
 UM\_SL\_MRC\_20230629\_BD\_2  
 29 June 2023



**LAYERS**

- River Mile
- Sailing Line
- 9' below LWRP2014 Surface
- 12' below LWRP2014 Surface
- 14' below LWRP2014 Surface

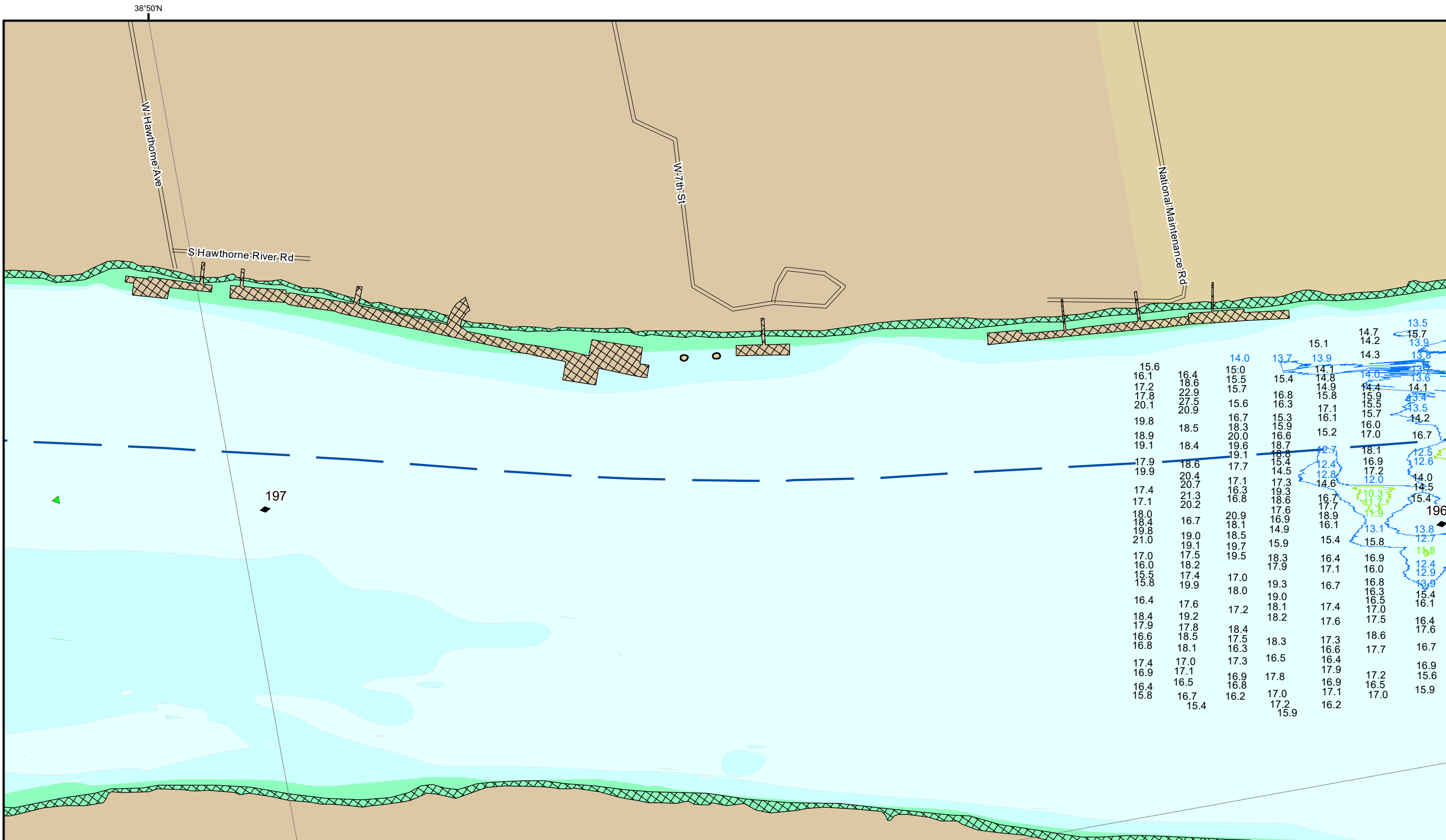
Depths shown are below LWRP2014 Surface

**Aids to Navigation**

- Green Buoy
- Red Buoy
- Junction
- Training Structure
- Revetment

**NOTES:**  
 Horizontal Coordinate System:  
 North American Datum of 1983 (NAD83), projected to the State Plane Coordinate System (SPCS), Missouri East Zone. Distance units in U.S. Survey Feet.  
 Vertical Datum:  
 Soundings are shown in feet and indicate depths below the 2014 Low Water Reference Plane.  
 The information depicted on this map represents the results of a survey conducted on the date indicated and can only be considered to represent the general condition existing at that time.  
 The location of navigation aids are based on and provided by the U.S. Coast Guard.

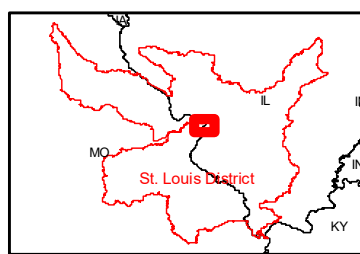
**Reach Number**  
 13 of 19



**DISCLAIMER:** The U.S. Army Corps of Engineers provides this information for informational purposes only. It is not intended for navigation. The Corps does not warrant the accuracy, completeness, or timeliness of the information. The Corps is not responsible for any errors or omissions, or for any consequences arising from the use of the information. The user assumes all liability for any use of this information.

Surveyed By:	
Reviewed By:	
Checked By:	
Submitted:	
Documented:	
Approved:	

**Survey Information**  
 MOSENTHAIN\_REACH\_UPPER\_MISSISSIPPI  
 UM\_SL\_MRC\_20230629\_BD\_2  
 29 June 2023



**LAYERS**

- River Mile
- Sailing Line
- 9' below LWRP2014 Surface
- 12' below LWRP2014 Surface
- 14' below LWRP2014 Surface

Depths shown are below LWRP2014 Surface

**Aids to Navigation**

- Green
- Red
- Junction
- Green Buoy
- Red Buoy
- Training Structure
- Revetment

**NOTES:**  
 Horizontal Coordinate System: North American Datum of 1983 (NAD83), projected to the State Plane Coordinate System (SPCS), Missouri East Zone. Distance units in U.S. Survey Feet.  
 Vertical Datum: Soundings are shown in feet and indicate depths below the 2014 Low Water Reference Plane.  
 The information depicted on this map represents the results of a survey conducted on the date indicated and can only be considered to represent the general condition existing at that time.  
 The location of navigation aids are based on and provided by the U.S. Coast Guard.

**Reach Number**  
 14 of 19