



US Army Corps of Engineers
St. Louis District

1. SOUNDED SEPTEMBER 18, 2020 BY BOWEN ENGINEERING AND SURVEYING.
2. HORIZONTAL DATUM IS BASED ON THE NORTH AMERICAN DATUM OF 1983 (NAD 83). COORDINATES SHOWN ARE MISSOURI/EAST ZONE STATE PLANE.
3. VERTICAL DATUM IS BASED ON THE NORTH AMERICAN VERTICAL DATUM OF 1988 (NAVD 88).

Depths shown are below LWRP2014 SURFACE
 Red solid contours are 9' below LWRP2014 SURFACE
 Green dashed contours are 12' below LWRP2014 SURFACE
 Blue dashed contours are 14' below LWRP2014 SURFACE

SEPTEMBER 18, 2020
 INTERPOLATED WATER SURFACE ELEVATIONS - MAIN CHANNEL

MILE	WSE @ 10:00	WSE @ 14:00	LWRP 2014	LWRP DIF @ 10:00	LWRP DIF @ 14:00
182	387.36	387.22	376.38	10.98	10.84
183	387.41	387.29	376.38	11.03	10.91
183.3	387.42	387.31	376.38	11.04	10.93
184	387.42	387.31	376.38	11.04	10.93
185.1	387.42	387.31	376.38	11.04	10.93

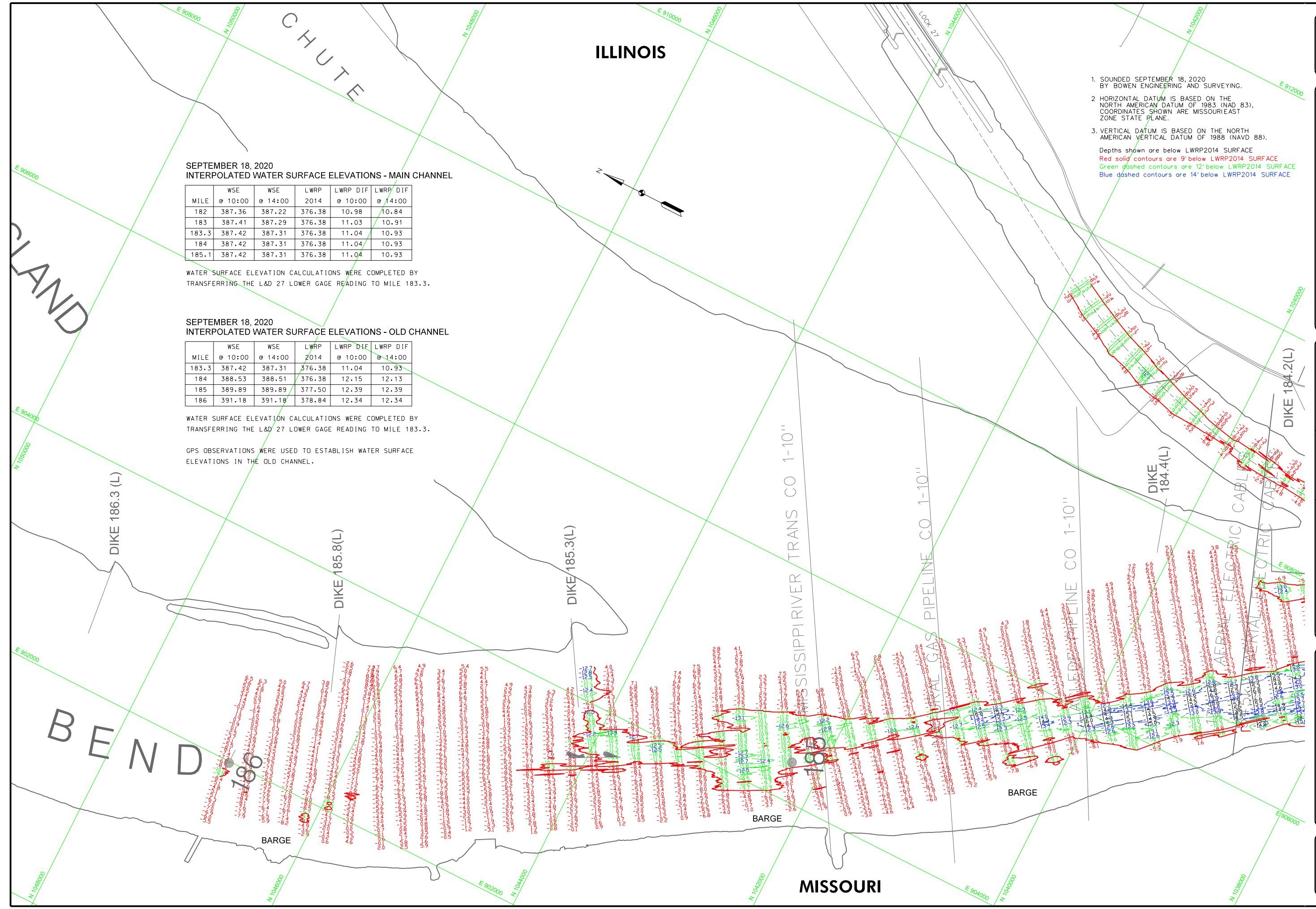
WATER SURFACE ELEVATION CALCULATIONS WERE COMPLETED BY TRANSFERRING THE L&D 27 LOWER GAGE READING TO MILE 183.3.

SEPTEMBER 18, 2020
 INTERPOLATED WATER SURFACE ELEVATIONS - OLD CHANNEL

MILE	WSE @ 10:00	WSE @ 14:00	LWRP 2014	LWRP DIF @ 10:00	LWRP DIF @ 14:00
183.3	387.42	387.31	376.38	11.04	10.93
184	388.53	388.51	376.38	12.15	12.13
185	389.89	389.89	377.50	12.39	12.39
186	391.18	391.18	378.84	12.34	12.34

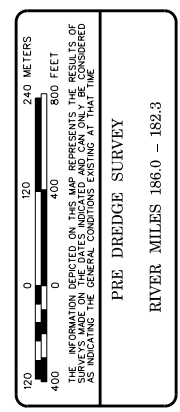
WATER SURFACE ELEVATION CALCULATIONS WERE COMPLETED BY TRANSFERRING THE L&D 27 LOWER GAGE READING TO MILE 183.3.

GPS OBSERVATIONS WERE USED TO ESTABLISH WATER SURFACE ELEVATIONS IN THE OLD CHANNEL.



GAGE RECORD		GPS OBSERVATION 1		GPS OBSERVATION 2	
ZERO N.A.V.D.	0.00	GPS OBSERVATION 1	GPS OBSERVATION 2	L&D 27 LOWER	ST. LOUIS NO
MILE	186.0 (OLD CHANNEL)	184.2 (OLD CHANNEL)	184.2 (OLD CHANNEL)	349.49	379.58
LWRP 2014	X	X	X	184.1	180.0
18 SEP 2020	391.18(13.46)	388.85(13.51)	377.50(14.00)	376.38	376.38

U.S. ARMY ENGINEER DIVISION		CORPS OF ENGINEERS		ST. LOUIS, MISSOURI	
UPPER MISSISSIPPI RIVER BASIN	MISSISSIPPI RIVER	Survey Date: SEPTEMBER 18, 2020	Reviewed by:	Drawn by:	Checked by:
		Submitted:	Approved:	Plot date:	File name:
		X	X	##661012181809	##661012181809.dwg

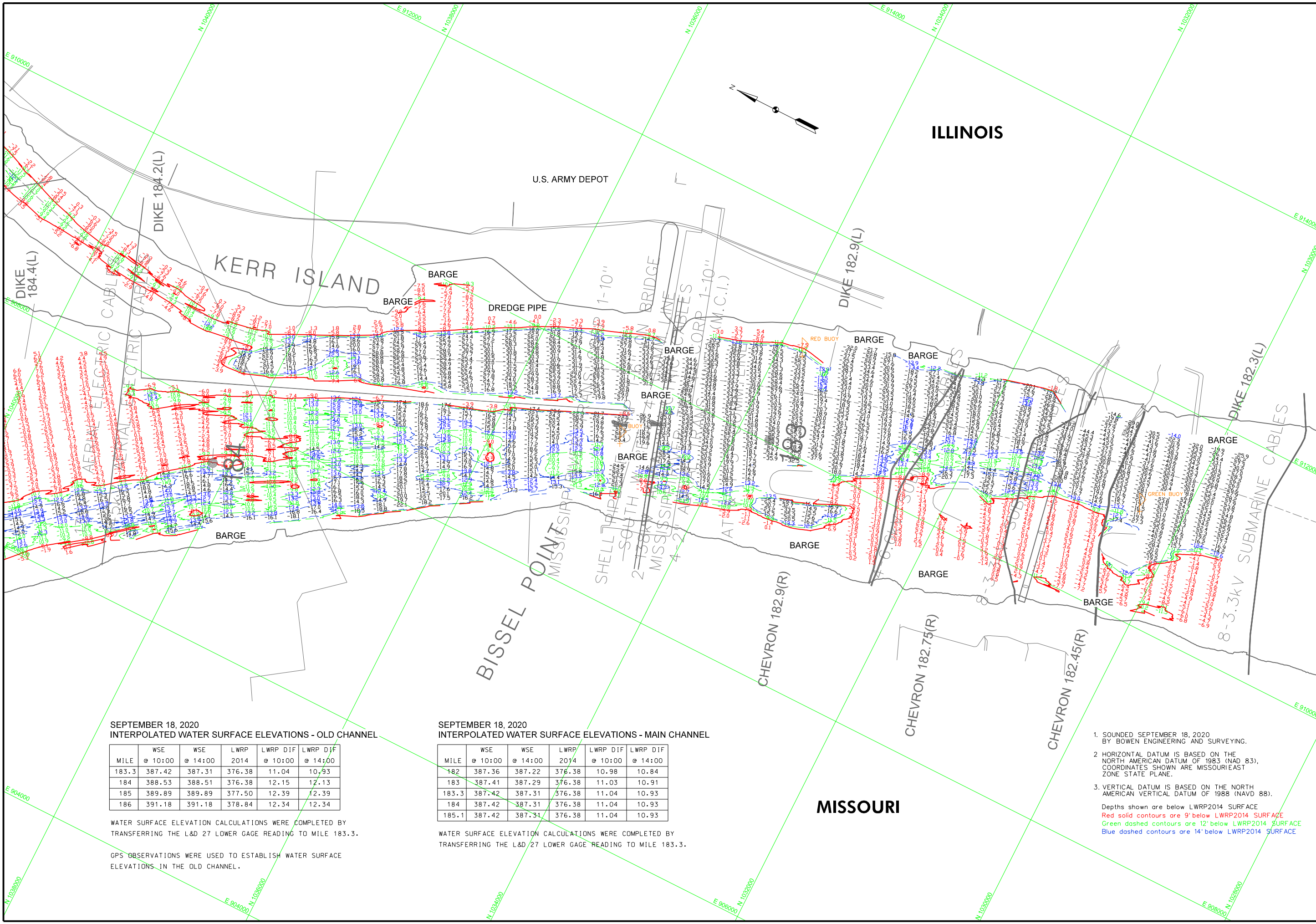


PRE DREDGE SURVEY
 RIVER MILES 186.0 - 182.3
 PLATE NUMBER
 XX
 SHEET 1 OF 2

GAGE RECORD	GPS OBSERVATION 1	GPS OBSERVATION 2	L&D 27 LOWER	ST. LOUIS W.O.
ZERO N.A.V.D.	0.00	0.00	0.00	379.58
MILE	186.0 (OLD CHANNEL)	184.2 (OLD CHANNEL)	184.1	180.0
LWRP 2014	X	X	X	376.38
18 SEP 2020	391.81(13.46)	373.93(10.00)	373.81(10.00)	376.38

U.S. ARMY ENGINEER DIVISION CORPS OF ENGINEERS ST. LOUIS, MISSOURI	UPPER MISSISSIPPI RIVER BASIN MISSISSIPPI RIVER	Survey Date: SEPTEMBER 18, 2020	Reviewed by: X
Drawn by: X	Submitted: X	Approved: X	
Plot date: 09/18/2020	File name: 18SEP1820.DWG		

240 METERS 120 0 120	800 FEET 400 0 400
THE INFORMATION DEPICTED ON THIS MAP REPRESENTS THE RESULTS OF A SURVEY CONDUCTED UNDER THE GENERAL CONDITIONS SET FORTH IN THE PRE DREDGE SURVEY	
RIVER MILES 186.0 - 182.3	



SEPTEMBER 18, 2020
INTERPOLATED WATER SURFACE ELEVATIONS - OLD CHANNEL

MILE	WSE @ 10:00	WSE @ 14:00	LWRP 2014	LWRP DIF @ 10:00	LWRP DIF @ 14:00
183.3	387.42	387.31	376.38	11.04	10.93
184	388.53	388.51	376.38	12.15	12.13
185	389.89	389.89	377.50	12.39	12.39
186	391.18	391.18	378.84	12.34	12.34

WATER SURFACE ELEVATION CALCULATIONS WERE COMPLETED BY TRANSFERRING THE L&D 27 LOWER GAGE READING TO MILE 183.3.

GPS OBSERVATIONS WERE USED TO ESTABLISH WATER SURFACE ELEVATIONS IN THE OLD CHANNEL.

SEPTEMBER 18, 2020
INTERPOLATED WATER SURFACE ELEVATIONS - MAIN CHANNEL

MILE	WSE @ 10:00	WSE @ 14:00	LWRP 2014	LWRP DIF @ 10:00	LWRP DIF @ 14:00
182	387.36	387.22	376.38	10.98	10.84
183	387.41	387.29	376.38	11.03	10.91
183.3	387.42	387.31	376.38	11.04	10.93
184	387.42	387.31	376.38	11.04	10.93
185.1	387.42	387.31	376.38	11.04	10.93

WATER SURFACE ELEVATION CALCULATIONS WERE COMPLETED BY TRANSFERRING THE L&D 27 LOWER GAGE READING TO MILE 183.3.

- SOUNDED SEPTEMBER 18, 2020 BY BOWEN ENGINEERING AND SURVEYING.
 - HORIZONTAL DATUM IS BASED ON THE NORTH AMERICAN DATUM OF 1983 (NAD 83). COORDINATES SHOWN ARE MISSOURI/EAST ZONE STATE PLANE.
 - VERTICAL DATUM IS BASED ON THE NORTH AMERICAN VERTICAL DATUM OF 1988 (NAVD 88).
- Depths shown are below LWRP2014 SURFACE
 Red solid contours are 9' below LWRP2014 SURFACE
 Green dashed contours are 12' below LWRP2014 SURFACE
 Blue dashed contours are 14' below LWRP2014 SURFACE