



US Army Corps of Engineers
St. Louis District

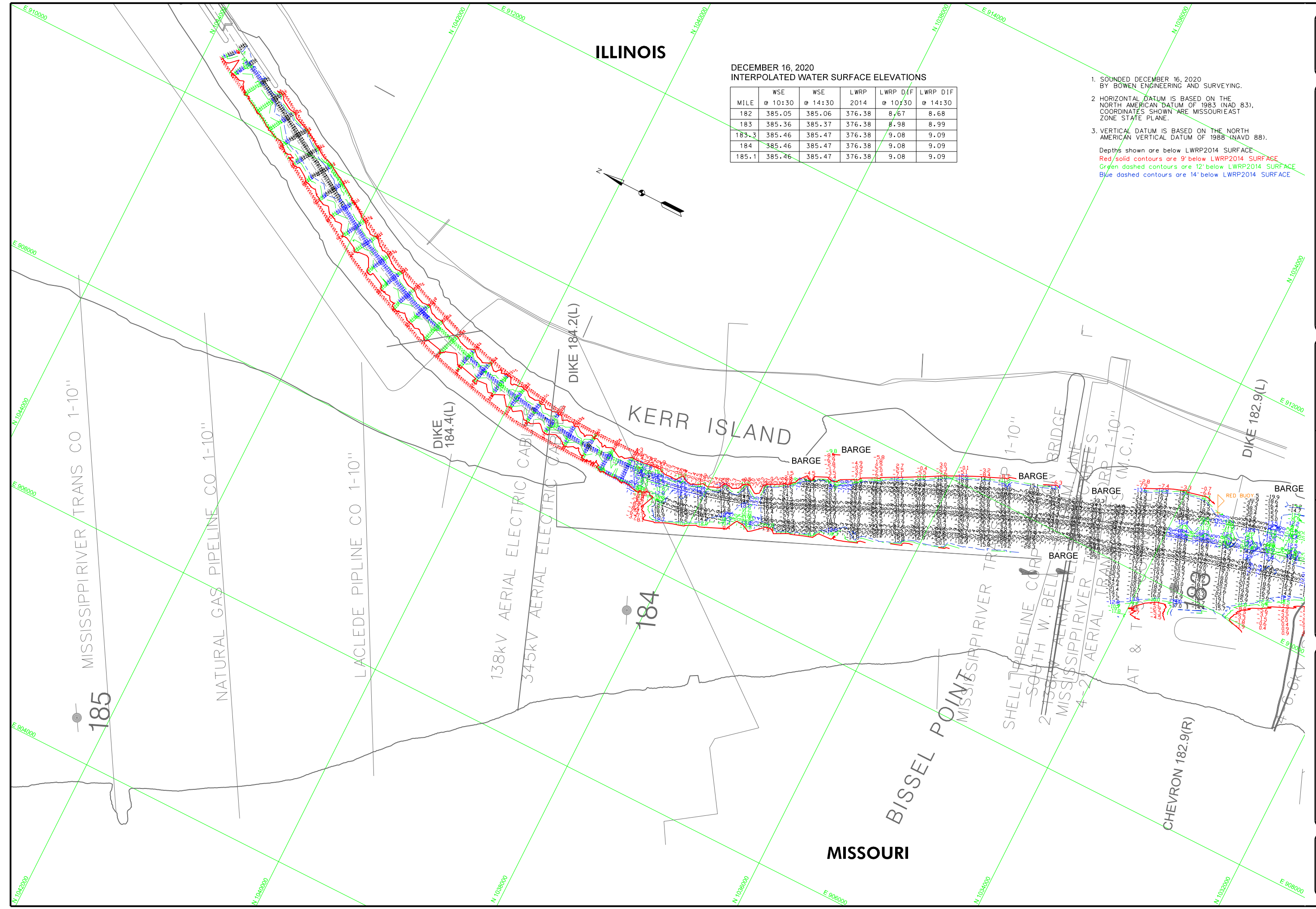
ILLINOIS

DECEMBER 16, 2020
INTERPOLATED WATER SURFACE ELEVATIONS

MILE	WSE @ 10:30	WSE @ 14:30	LWRP 2014	LWRP DIF @ 10:30	LWRP DIF @ 14:30
182	385.05	385.06	376.38	8.67	8.68
183	385.36	385.37	376.38	8.98	8.99
183.3	385.46	385.47	376.38	9.08	9.09
184	385.46	385.47	376.38	9.08	9.09
185.1	385.46	385.47	376.38	9.08	9.09

1. SOUNDED DECEMBER 16, 2020 BY BOWEN ENGINEERING AND SURVEYING.
2. HORIZONTAL DATUM IS BASED ON THE NORTH AMERICAN DATUM OF 1983 (NAD 83). COORDINATES SHOWN ARE MISSOURI/EAST ZONE STATE PLANE.
3. VERTICAL DATUM IS BASED ON THE NORTH AMERICAN VERTICAL DATUM OF 1988 (NAVD 88).

Depths shown are below LWRP2014 SURFACE
 Red/solid contours are 9' below LWRP2014 SURFACE
 Green dashed contours are 12' below LWRP2014 SURFACE
 Blue dashed contours are 14' below LWRP2014 SURFACE



GAGE RECORD		ST. LOUIS NO.
L&O 27 LOWER	379.58	
GPS OBSERVATION 1	349.49	
ZERO N.A.V.D.	185.1	
MILE	185.0 (OLD CHANNEL)	180.0
LWRP 2014	376.38	376.38
18 DEC 2020	35.970(30) 35.984(30) 4.83(30) 30(2.84(14:30)	

Survey Date:	DECEMBER 16, 2020
Drawn by:	X
Checked by:	X
Reviewed by:	X
Submitted:	X
Approved:	X

U.S. ARMY ENGINEER DIVISION
CORPS OF ENGINEERS
ST. LOUIS, MISSOURI
UPPER MISSISSIPPI RIVER BASIN
MISSISSIPPI RIVER

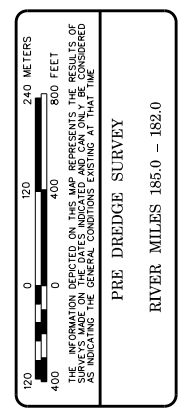


PLATE NUMBER
XX
SHEET 1 OF 2

MISSOURI