

LAYERS

- River Mile
- Sailing Line
- 9' below LWRP2014 Surface
- 12' below LWRP2014 Surface
- 14' below LWRP2014 Surface

Depths shown are below LWRP2014 Surface

Aids to Navigation

- Green
- Red
- Junction
- Green Buoy
- Red Buoy
- Training Structure
- Revetment

Feet

0 140 280 420 560

NOTES:
 Horizontal Coordinate System:
 North American Datum of 1983 (NAD83), projected to the State Plane Coordinate System (SPCS), Missouri East Zone. Distance units in U.S. Survey Feet.
 Vertical Datum:
 Soundings are shown in feet and indicate depths below the 2014 Low Water Reference Plane.
 The information depicted on this map represents the results of a survey conducted on the date indicated and can only be considered to represent the general condition existing at that time.
 The location of navigation aids are based on and provided by the U.S. Coast Guard.

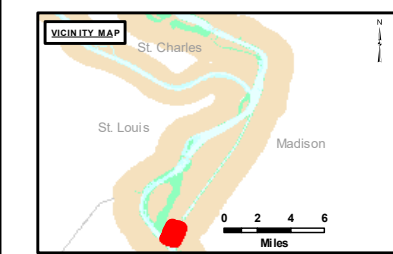
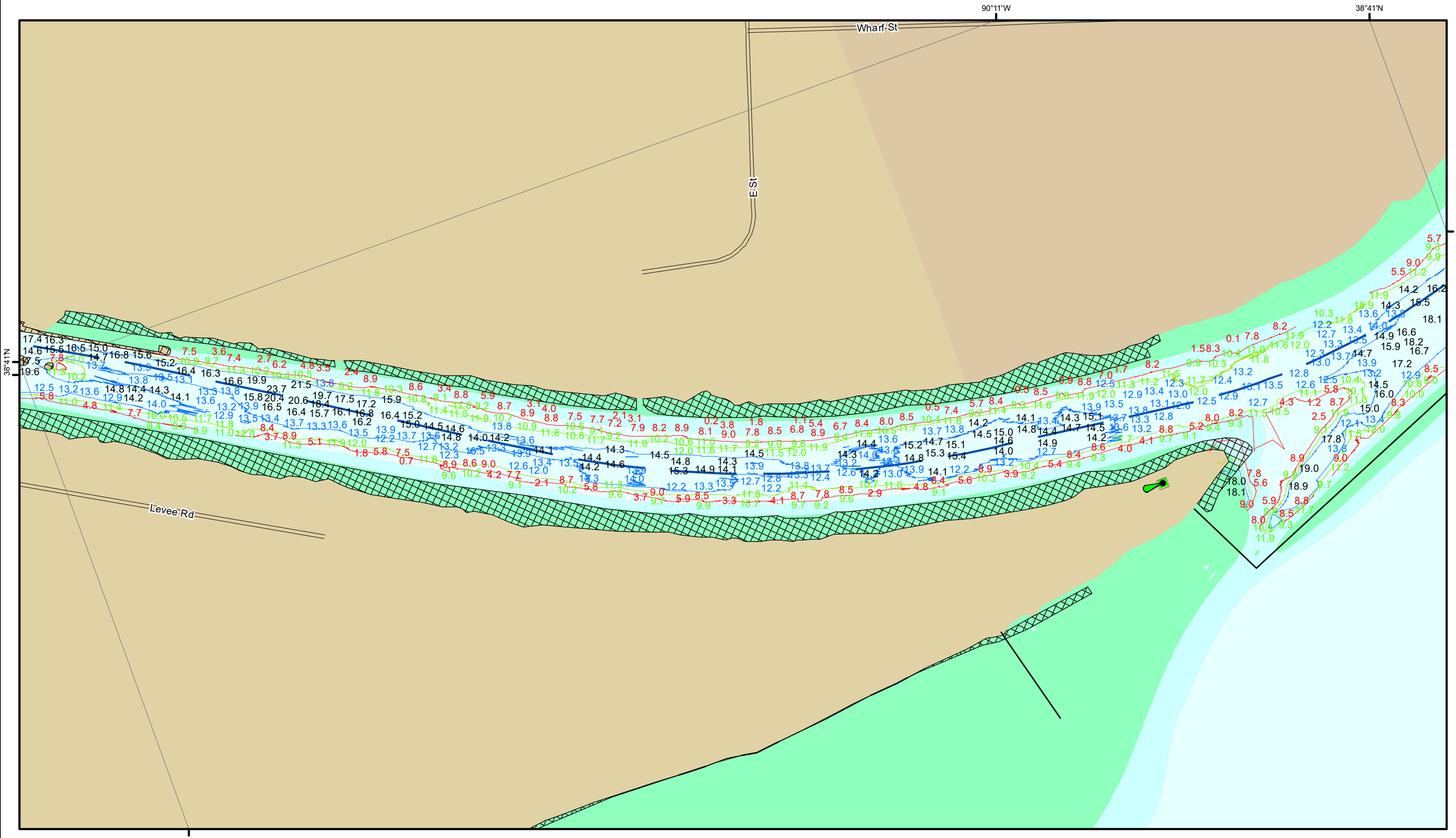


DISTRICT LIABILITY: The data represents the results of data collection for a specific US Army Corps of Engineers project. It is not intended for use in any other project. The US Government makes no warranty, express or implied, regarding the accuracy, completeness, or timeliness of the data. The user assumes all liability for any use of the data for purposes not intended by the US Army Corps of Engineers. These data belong to the Government. The user agrees to indemnify and hold the Government harmless from any claims, damages, or expenses, including reasonable attorneys' fees, that may be incurred by the Government as a result of the user's use of the data.

U.S. ARMY CORPS OF ENGINEERS ST. LOUIS DISTRICT		
Submitted By:	Reviewed By:	Checked By:

Survey Information
 MOSENTHEIN_REACH_UPPER_MISSISSIPPI
 UM_SL_MRC_20230717_BD_1
 17 July 2023

Reach Number of



LAYERS

- River Mile
- Sailing Line
- 9' below LWRP2014 Surface
- 12' below LWRP2014 Surface
- 14' below LWRP2014 Surface

Depths shown are below LWRP2014 Surface

Aids to Navigation

- Green
- Red
- Junction
- Green Buoy
- Red Buoy
- Training Structure
- Revetment

NOTES:
 Horizontal Coordinate System:
 North American Datum of 1983 (NAD83), projected to the
 State Plane Coordinate System (SPCS), Missouri East Zone.
 Distance units in U.S. Survey Feet.

Vertical Datum:
 Soundings are shown in feet and indicate depths below the
 2014 Low Water Reference Plane.

The information depicted on this map represents the results of
 a survey conducted on the date indicated and can only be
 considered to represent the general condition existing at that time.

The location of navigation aids are based on and provided by
 the U.S. Coast Guard.

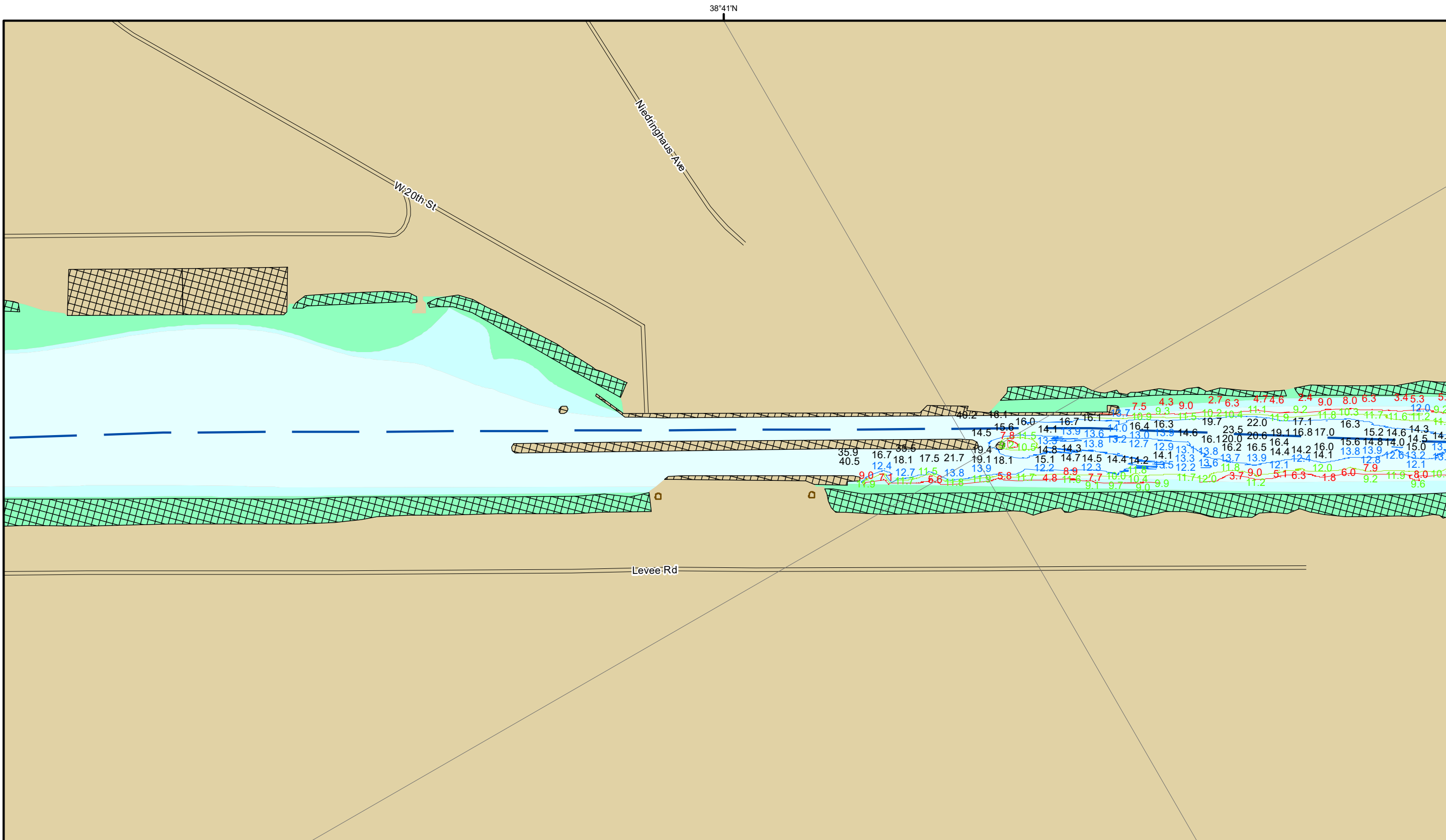


DISCLAIMER: The U.S. Army Corps of Engineers provides this information as a service to the public. It is not intended to be used for navigation or other purposes. The Corps does not warrant the accuracy, completeness, or timeliness of the information. The Corps is not responsible for any errors or omissions, or for any consequences arising from the use of the information. The user assumes all liability for any use of the information.

U.S. ARMY CORPS OF ENGINEERS ST. LOUIS DISTRICT	
Submitted By	Reviewed By
Documented	Checked By
Approved	

Survey Information
 MOSENTHAIN_REACH_UPPER_MISSISSIPPI
 UM_SL_MRC_20230717_BD_1
 17 July 2023

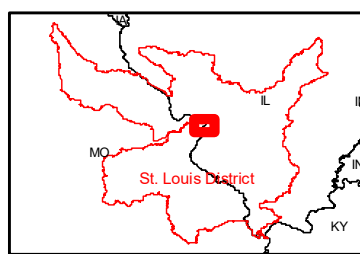
Reach Number
 1 of 19



DISCLAIMER: The U.S. Army Corps of Engineers provides this information for informational purposes only. It is not intended for use in any legal proceeding or as a basis for any claim. The Corps makes no warranty, express or implied, regarding the accuracy, completeness, or timeliness of the information. The user assumes all liability for any use of this information. The U.S. Army Corps of Engineers is not responsible for any errors or omissions in this information. The U.S. Army Corps of Engineers is not responsible for any damages, including consequential damages, arising from the use of this information. The U.S. Army Corps of Engineers is not responsible for any loss of data or information. The U.S. Army Corps of Engineers is not responsible for any loss of time or money. The U.S. Army Corps of Engineers is not responsible for any loss of life or property. The U.S. Army Corps of Engineers is not responsible for any loss of reputation. The U.S. Army Corps of Engineers is not responsible for any loss of honor. The U.S. Army Corps of Engineers is not responsible for any loss of dignity. The U.S. Army Corps of Engineers is not responsible for any loss of respect. The U.S. Army Corps of Engineers is not responsible for any loss of honor. The U.S. Army Corps of Engineers is not responsible for any loss of dignity. The U.S. Army Corps of Engineers is not responsible for any loss of respect.

U.S. ARMY CORPS OF ENGINEERS ST. LOUIS DISTRICT		
Submitted By:	Reviewed By:	Checked By:

Survey Information
 MOSENTHEIN_REACH_UPPER_MISSISSIPPI
 UM_SL_MRC_20230717_BD_1
 17 July 2023



LAYERS

- River Mile
- Sailing Line
- 9' below LWRP2014 Surface
- 12' below LWRP2014 Surface
- 14' below LWRP2014 Surface

Depths shown are below LWRP2014 Surface

Aids to Navigation

- Green
- Red
- Junction
- Green Buoy
- Red Buoy
- Training Structure
- Revetment

NOTES:
 Horizontal Coordinate System:
 North American Datum of 1983 (NAD83), projected to the State Plane Coordinate System (SPCS), Missouri East Zone. Distance units in U.S. Survey Feet.
 Vertical Datum:
 Soundings are shown in feet and indicate depths below the 2014 Low Water Reference Plane.
 The information depicted on this map represents the results of a survey conducted on the date indicated and can only be considered to represent the general condition existing at that time.
 The location of navigation aids are based on and provided by the U.S. Coast Guard.

Reach Number
 2 of 19