



US Army Corps of Engineers  
St. Louis District

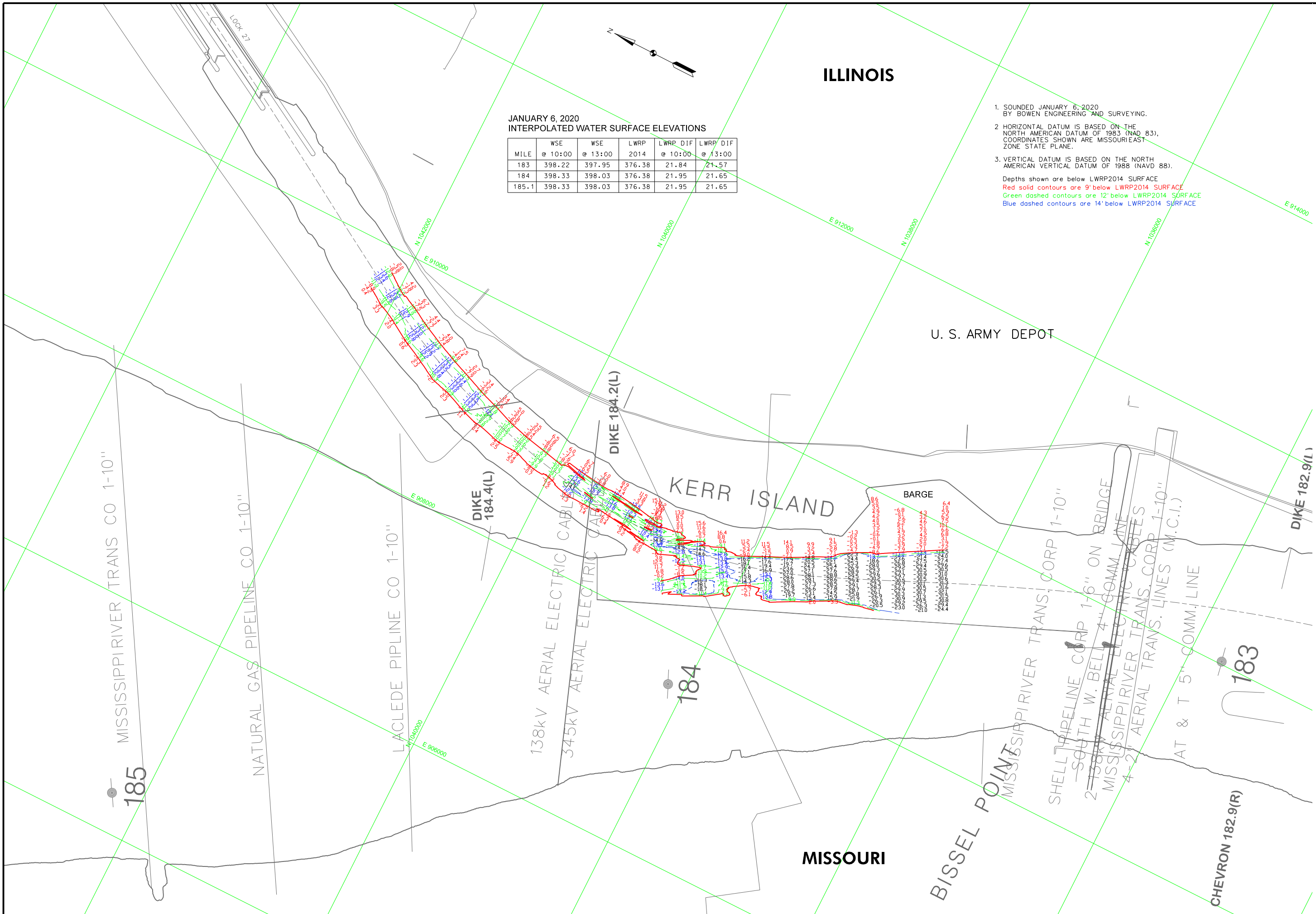
ILLINOIS

JANUARY 6, 2020  
INTERPOLATED WATER SURFACE ELEVATIONS

MILE	WSE		LWRP 2014	LWRP DIF	
	@ 10:00	@ 13:00		@ 10:00	@ 13:00
183	398.22	397.95	376.38	21.84	21.57
184	398.33	398.03	376.38	21.95	21.65
185.1	398.33	398.03	376.38	21.95	21.65

- SOUNDED JANUARY 6, 2020  
BY BOWEN ENGINEERING AND SURVEYING.
- HORIZONTAL DATUM IS BASED ON THE  
NORTH AMERICAN DATUM OF 1983 (NAD 83),  
COORDINATES SHOWN ARE MISSOURI EAST  
ZONE STATE PLANE.
- VERTICAL DATUM IS BASED ON THE NORTH  
AMERICAN VERTICAL DATUM OF 1988 (NAVD 88).

Depths shown are below LWRP2014 SURFACE  
 Red solid contours are 9' below LWRP2014 SURFACE  
 Green dashed contours are 12' below LWRP2014 SURFACE  
 Blue dashed contours are 14' below LWRP2014 SURFACE



GAGE RECORD		JEFFERSON BARRACKS	
CHAM. OF ROCKS, MO	ST. LOUIS, MO	ST. LOUIS, MO	ST. LOUIS, MO
180.4 (OLD CHANNEL)	184.9	180.0	184.7
LWRP 2014	184.1	180.0	184.7
05 JAN 2020	X	180.0	184.7
	X	180.0	184.7
	X	180.0	184.7

U.S. ARMY ENGINEER DIVISION CORPS OF ENGINEERS ST. LOUIS, MISSOURI		SURVEY DATE: JANUARY 6, 2020	
UPPER MISSISSIPPI RIVER BASIN	MISSISSIPPI RIVER	Drawn by: A	Reviewed by: X
		Submitted: X	APPROVED: X
		Plot date: #88801021/1/2020	File name: #88801021/1/2020

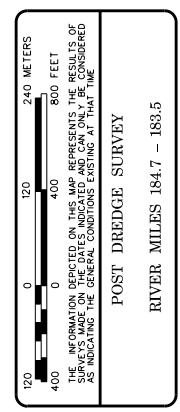


PLATE NUMBER  
XX