



US Army Corps of Engineers
St. Louis District

1. SOUNDED OCTOBER 2, 2020 BY BOWEN ENGINEERING AND SURVEYING.
2. HORIZONTAL DATUM IS BASED ON THE NORTH AMERICAN DATUM OF 1983 (NAD 83). COORDINATES SHOWN ARE MISSOURI EAST ZONE STATE PLANE.
3. VERTICAL DATUM IS BASED ON THE NORTH AMERICAN VERTICAL DATUM OF 1988 (NAVD 88).

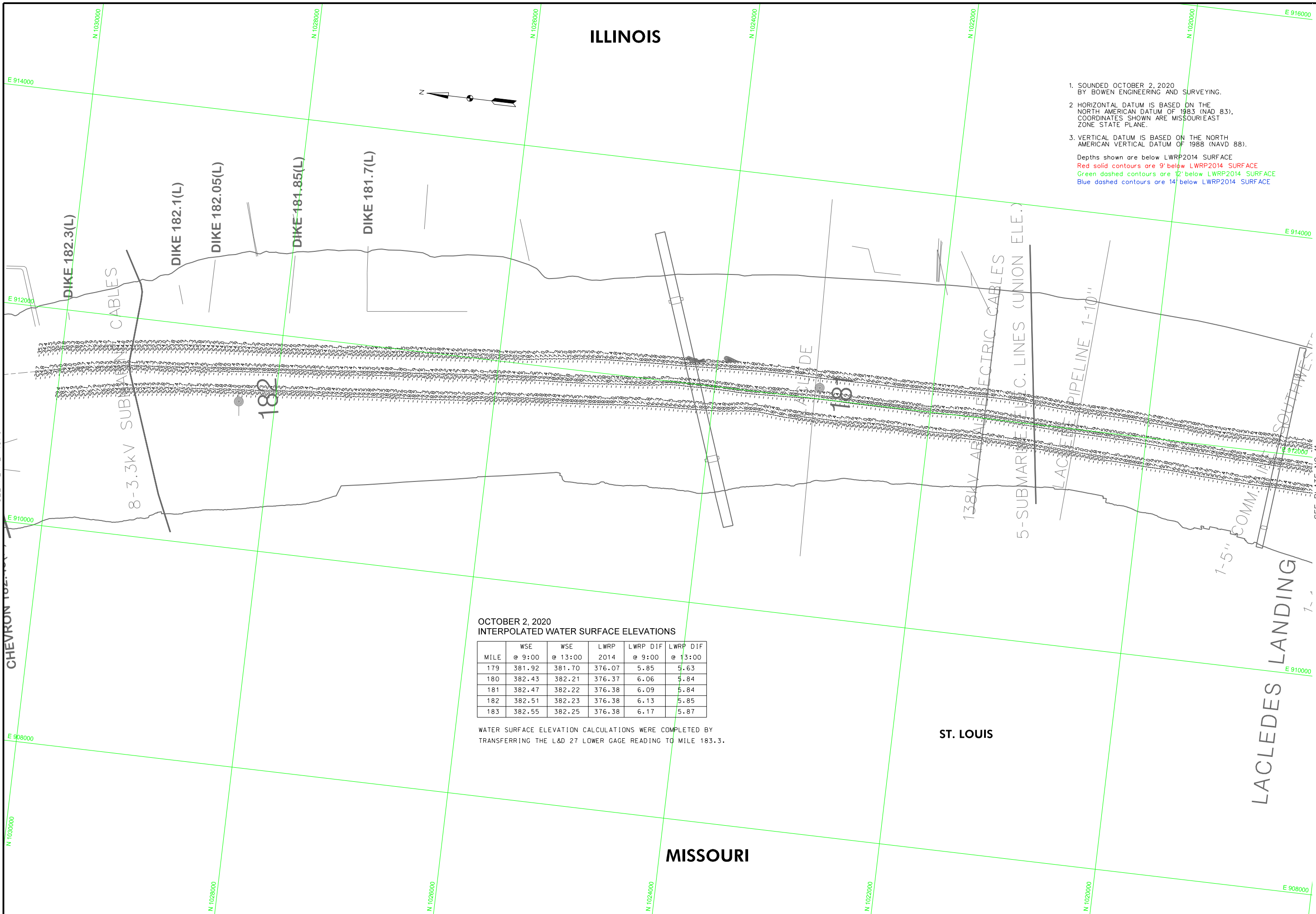
Depths shown are below LWRP2014 SURFACE
 Red solid contours are 9' below LWRP2014 SURFACE
 Green dashed contours are 12' below LWRP2014 SURFACE
 Blue dashed contours are 14' below LWRP2014 SURFACE

GAGE RECORD	ST. LOUIS, MO	JEFFERSON BARRACKS	CHESTER I.L.
L&D 27 LOWER	379.58	377.34	340.73
ZERO N.A.V.D.	349.49	347.25	309.9
MILE	180.0	180.0	180.0
LWRP 2014	376.38	376.38	369.63
02 OCT 2020 13:07:00 13:07:00 13:07:00 13:07:00	376.38	376.38	369.63
			X
			5.88900 6.011500

U.S. ARMY ENGINEER DIVISION CORPS OF ENGINEERS ST. LOUIS, MISSOURI	Survey Date: OCTOBER 2, 2020
Drawn by: X	Checked by: X
Submitted by: X	Reviewed by: X
APPROVED: X	
UPPER MISSISSIPPI RIVER BASIN MISSISSIPPI RIVER	
Plot date: File name:	

U.S. ARMY ENGINEER DIVISION CORPS OF ENGINEERS ST. LOUIS, MISSOURI
UPPER MISSISSIPPI RIVER BASIN MISSISSIPPI RIVER
CHANNEL PATROL RIVER MILES 180.3 - 182.2

PLATE NUMBER
10



OCTOBER 2, 2020
INTERPOLATED WATER SURFACE ELEVATIONS

MILE	WSE @ 9:00	WSE @ 13:00	LWRP 2014	LWRP DIF @ 9:00	LWRP DIF @ 13:00
179	381.92	381.70	376.07	5.85	5.63
180	382.43	382.21	376.37	6.06	5.84
181	382.47	382.22	376.38	6.09	5.84
182	382.51	382.23	376.38	6.13	5.85
183	382.55	382.25	376.38	6.17	5.87

WATER SURFACE ELEVATION CALCULATIONS WERE COMPLETED BY TRANSFERRING THE L&D 27 LOWER GAGE READING TO MILE 183.3.

DIKE 182.3(L)
DIKE 182.1(L)
DIKE 182.05(L)
DIKE 181.85(L)
DIKE 181.7(L)

8-3.3kV SUBMARI... CABLES

138kV AIR... ELECTRIC CABLES
5-SUBMARI... C. LINES (UNION ELE.)
LACLEDES PIPELINE 1-10"

LACLEDES LANDING
1-5" COMM. PIPELINE
1-10" SOUTHWEST

SEE PLATE NO. 9

SEE PLATE NO. 11

E 908000

E 910000

E 914000

E 914000

E 908000

N 1030000

N 1028000

N 1026000

ILLINOIS

N 1024000

N 1022000

N 1020000

E 916000

N 1030000

N 1028000

N 1026000

N 1024000

N 1022000

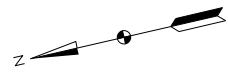
N 1020000

MISSOURI

ST. LOUIS

240 METERS
800 FEET

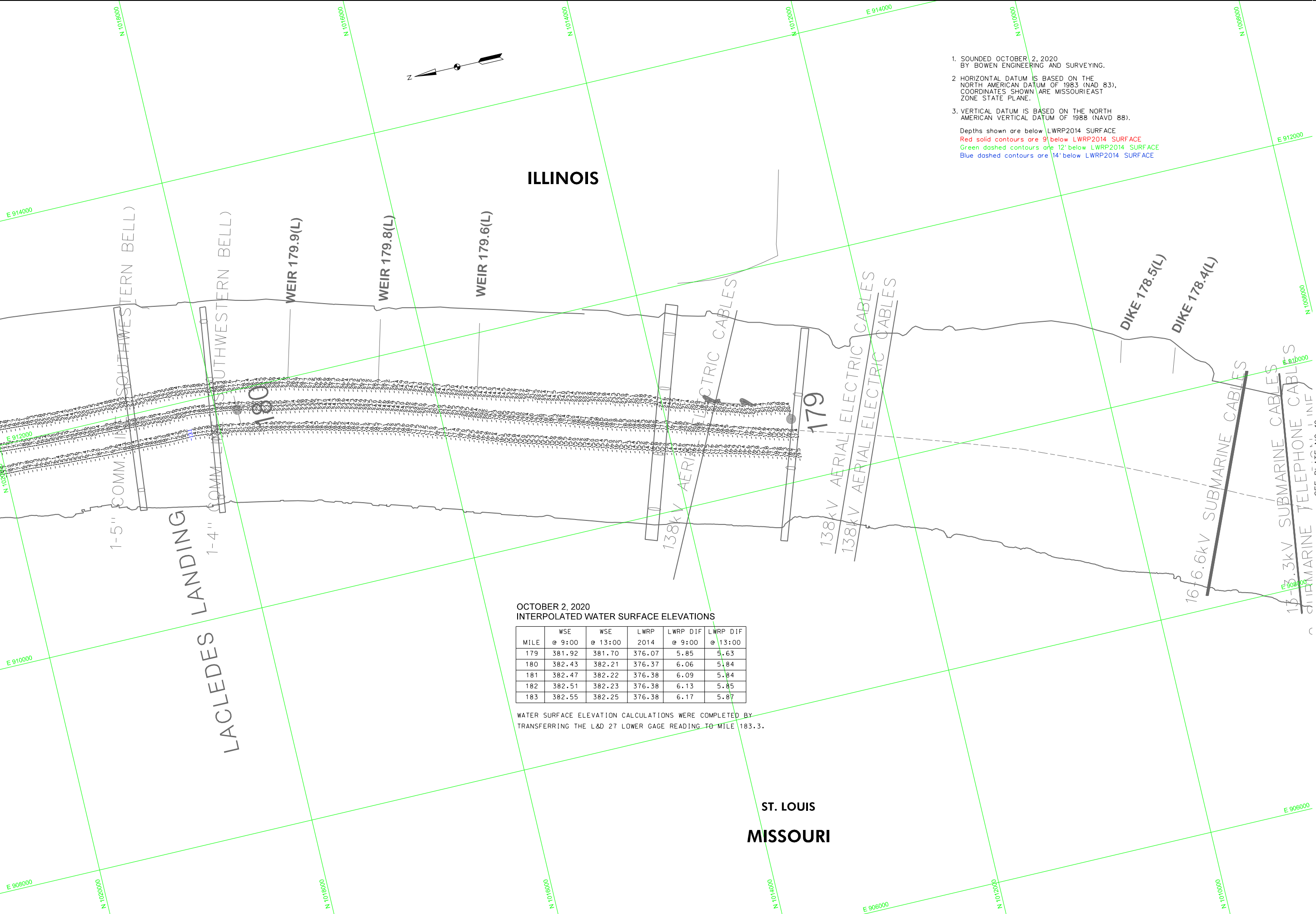
THE INFORMATION DEPICTED ON THIS MAP REPRESENTS THE RESULTS OF SURVEYING AND THE GENERAL CONDITIONS EXISTING AT THE TIME OF SURVEYING.



1. SOUNDED OCTOBER 2, 2020 BY BOWEN ENGINEERING AND SURVEYING.
2. HORIZONTAL DATUM IS BASED ON THE NORTH AMERICAN DATUM OF 1983 (NAD 83). COORDINATES SHOWN ARE MISSOURI EAST ZONE STATE PLANE.
3. VERTICAL DATUM IS BASED ON THE NORTH AMERICAN VERTICAL DATUM OF 1988 (NAVD 88).

Depths shown are below LWRP2014 SURFACE
 Red solid contours are 9' below LWRP2014 SURFACE
 Green dashed contours are 12' below LWRP2014 SURFACE
 Blue dashed contours are 14' below LWRP2014 SURFACE

ILLINOIS



1-5" COMM. SOUTHWESTERN BELL

1-4" COMM. SOUTHWESTERN BELL

LACLEDES LANDING

138kV AERIAL ELECTRIC CABLES

138kV AERIAL ELECTRIC CABLES

16+6.6kV SUBMARINE CABLES
 17+3.3kV SUBMARINE CABLES
 17+3.3kV SUBMARINE TELEPHONE CABLES

OCTOBER 2, 2020 INTERPOLATED WATER SURFACE ELEVATIONS

MILE	WSE		LWRP 2014	LWRP DIF	
	@ 9:00	@ 13:00		@ 9:00	@ 13:00
179	381.92	381.70	376.07	5.85	5.63
180	382.43	382.21	376.37	6.06	5.84
181	382.47	382.22	376.38	6.09	5.84
182	382.51	382.23	376.38	6.13	5.85
183	382.55	382.25	376.38	6.17	5.87

WATER SURFACE ELEVATION CALCULATIONS WERE COMPLETED BY TRANSFERRING THE L&D 27 LOWER GAGE READING TO MILE 183.3.

ST. LOUIS MISSOURI



US Army Corps of Engineers
St. Louis District

GAGE RECORD	
CHESTER L	340.73
JEFFERSON BARRACKS	377.34
1&D 27 LOWER	349.49
ZERO N.A.V.D.	180.0
MILE	369.63
LWRP 2014	376.38
02 OCT 2020	2.85(900) 2.85(1500)
	X
	5.88(900) 6.01(1500)

U.S. ARMY ENGINEER DIVISION CORPS OF ENGINEERS ST. LOUIS, MISSOURI	
UPPER MISSISSIPPI RIVER BASIN	MISSISSIPPI RIVER
Drawn by: Bowen Engineering	Checked by: Bowen Engineering
Submitted: Bowen Engineering	Approved: Bowen Engineering
Survey Date: OCTOBER 2, 2020	Reviewed by: Bowen Engineering

U.S. ARMY ENGINEER DIVISION CORPS OF ENGINEERS ST. LOUIS, MISSOURI	
UPPER MISSISSIPPI RIVER BASIN	MISSISSIPPI RIVER
Channel Patrol	River Miles 178.2 - 180.3

PLATE NUMBER
11