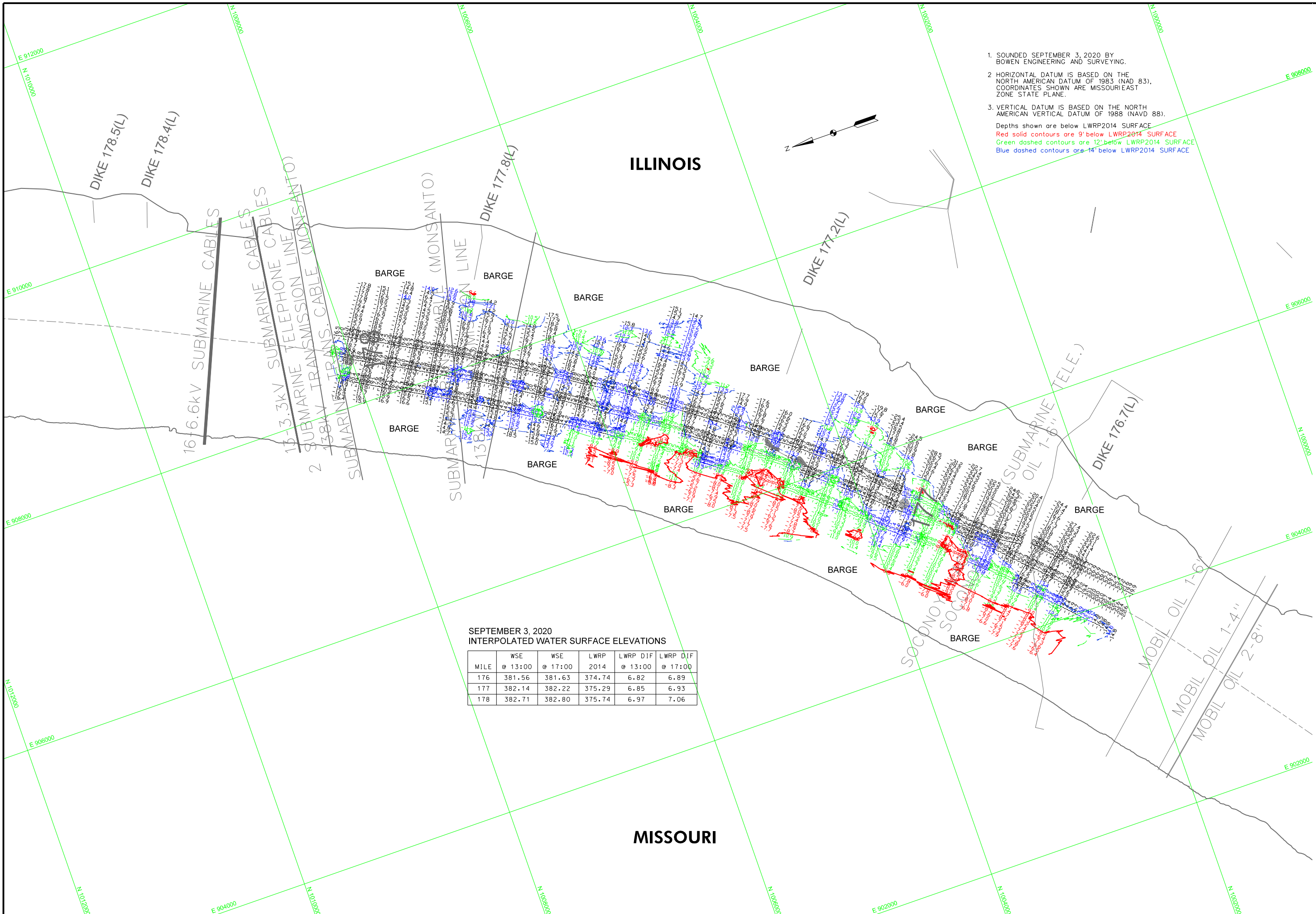
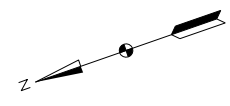




US Army Corps of Engineers  
St. Louis District

1. SOUNDED SEPTEMBER 3, 2020 BY BOWEN ENGINEERING AND SURVEYING.
  2. HORIZONTAL DATUM IS BASED ON THE NORTH AMERICAN DATUM OF 1983 (NAD 83). COORDINATES SHOWN ARE MISSOURI EAST ZONE STATE PLANE.
  3. VERTICAL DATUM IS BASED ON THE NORTH AMERICAN VERTICAL DATUM OF 1988 (NAVD 88).
- Depths shown are below LWRP2014 SURFACE  
 Red solid contours are 9' below LWRP2014 SURFACE  
 Green dashed contours are 12' below LWRP2014 SURFACE  
 Blue dashed contours are 14' below LWRP2014 SURFACE



SEPTEMBER 3, 2020  
INTERPOLATED WATER SURFACE ELEVATIONS

MILE	WSE @ 13:00	WSE @ 17:00	LWRP 2014	LWRP DIF @ 13:00	LWRP DIF @ 17:00
176	381.56	381.63	374.74	6.82	6.89
177	382.14	382.22	375.29	6.85	6.93
178	382.71	382.80	375.74	6.97	7.06

ST. LOUIS, MO	CHESTER ILL
379.58	340.73
180.0	109.9
376.38	340.33
4.2913300 1.4017200	7.3613300 1.3617200
0.012300	0.012300
UNAVAILABLE	UNAVAILABLE

Survey Date:	SEPTEMBER 3, 2020
Drawn by:	X
Reviewed by:	X
Approved:	X
Submitted:	X
File name:	176-178-0-176-7

U.S. ARMY ENGINEER DIVISION  
CORPS OF ENGINEERS  
ST. LOUIS, MISSOURI  
UPPER MISSISSIPPI RIVER BASIN  
MISSISSIPPI RIVER

PRE DREDGE SURVEY  
RIVER MILES 178.0 - 176.7

PLATE NUMBER  
XX  
SHEET 1 OF 1