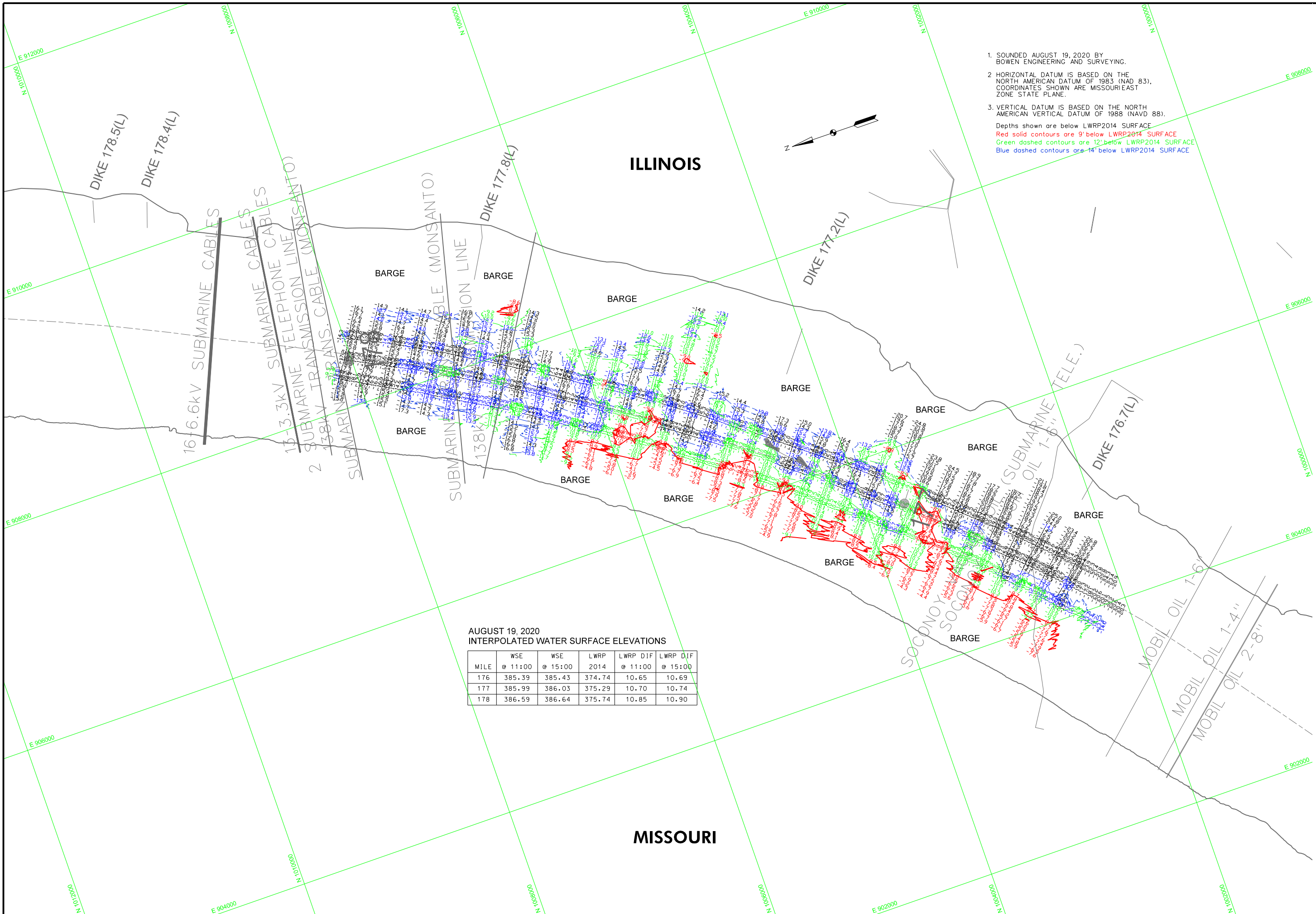




US Army Corps of Engineers  
St. Louis District

1. SOUNDED AUGUST 19, 2020 BY BOWEN ENGINEERING AND SURVEYING.
  2. HORIZONTAL DATUM IS BASED ON THE NORTH AMERICAN DATUM OF 1983 (NAD 83). COORDINATES SHOWN ARE MISSOURI EAST ZONE STATE PLANE.
  3. VERTICAL DATUM IS BASED ON THE NORTH AMERICAN VERTICAL DATUM OF 1988 (NAVD 88).
- Depths shown are below LWRP2014 SURFACE  
 Red solid contours are 9' below LWRP2014 SURFACE  
 Green dashed contours are 12' below LWRP2014 SURFACE  
 Blue dashed contours are 14' below LWRP2014 SURFACE



AUGUST 19, 2020  
INTERPOLATED WATER SURFACE ELEVATIONS

MILE	WSE @ 11:00	WSE @ 15:00	LWRP 2014	LWRP DIF @ 11:00	LWRP DIF @ 15:00
176	385.39	385.43	374.74	10.65	10.69
177	385.99	386.03	375.29	10.70	10.74
178	386.59	386.64	375.74	10.85	10.90

CHESTER I.L.	ST. LOUIS, MO	JEFFERSON BARRACKS (BRICKEY'S LANDING, MO)	FILE NAME
340.73	379.58	377.14	11-4011001 176.7(L) 178.5(L)
109.9	180.0	188.70	
340.33	376.38	369.63	
11-4011001 176.7(L) 178.5(L)		379.800	

Survey Date:	Survey Date:	Checked by:	Checked by:
AUGUST 19, 2020	AUGUST 19, 2020	X	X
Drawn by:	Reviewed by:	APPROVED:	Plot date:
X	X	X	##/##/## (MM/DD/YYYY)
SUBMITTED:			
X			

U.S. ARMY ENGINEER DIVISION  
CORPS OF ENGINEERS  
ST. LOUIS, MISSOURI  
UPPER MISSISSIPPI RIVER BASIN  
MISSISSIPPI RIVER

170 0 100 200 300 400 500 600 700 800 900 METERS  
170 0 100 200 300 400 500 600 700 800 900 FEET  
THE INFORMATION DEPICTED ON THIS MAP REPRESENTS THE RESULTS OF A SURVEY CONDUCTED UNDER THE GENERAL CONDITIONS OF CONTRACT NO. 176.7(L) 178.5(L) PRE DREDGE SURVEY  
RIVER MILES 178.0 - 176.7

PLATE NUMBER  
XX  
SHEET 1 OF 1