

Distribution Liability: The data represents the results of data collection/processing for a specific US Army Corps of Engineers project. It is not intended for use in any other project. As such, it is only valid for the stated use, current time and place. The user is responsible for the accuracy of the data for their intended purpose. The user is also responsible for the accuracy of the data for their intended purpose.

DISCLAIMER: The United States Government makes no warranty, express or implied, including the accuracy, completeness, or timeliness of the information and the data furnished. The United States Government shall be held harmless for any errors or omissions in the information and data furnished. These data belong to the Government. The user is responsible for the accuracy of the data for their intended purpose. The user is also responsible for the accuracy of the data for their intended purpose.

U.S. ARMY CORPS OF ENGINEERS ST. LOUIS DISTRICT		
Submitted By:	Reviewed By:	Checked By:

Survey Information
 IVORY_LANDING_UPPER_MISSISSIPPI
 UM_SL_ILC_20221005_OT_1
 05 October 2022



LAYERS

- River Mile
- Sailing Line
- 9' below LWRP2014 Surface
- 12' below LWRP2014 Surface
- 14' below LWRP2014 Surface

Depths shown are below LWRP2014 Surface

Aids to Navigation

- Green
- Red
- Junction
- Green Buoy
- Red Buoy
- Training Structure
- Revetment

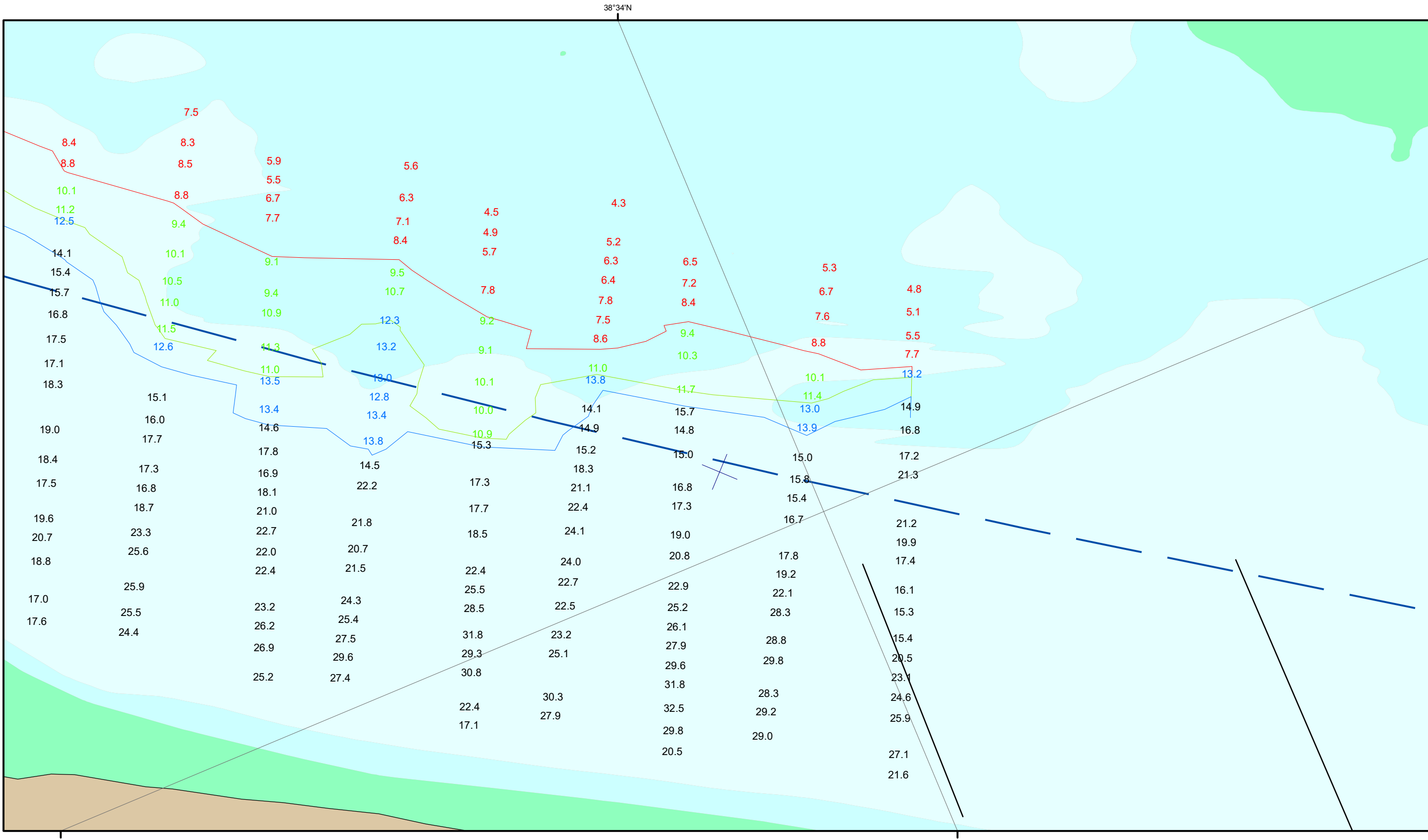
NOTES:
 Horizontal Coordinate System:
 North American Datum of 1983 (NAD83), projected to the State Plane Coordinate System (SPCS), Missouri East Zone. Distance units in U.S. Survey Feet.

Vertical Datum:
 Soundings are shown in feet and indicate depths below the 2014 Low Water Reference Plane.

The information depicted on this map represents the results of a survey conducted on the date indicated and can only be considered to represent the general condition existing at that time.

The location of navigation aids are based on and provided by the U.S. Coast Guard.

Reach Number
 1 of 2



DISCLAIMER: The data represents the results of data collection for a specific US Army Corps of Engineers project. It is not intended to be used for any other purpose. The US Government makes no warranty, expressed or implied, concerning the accuracy, completeness, or timeliness of the data furnished. The user shall be responsible for verifying the accuracy of the data before use. These data belong to the Government. The user shall not disseminate these data to others without also transferring this disclaimer.

U.S. ARMY CORPS OF ENGINEERS ST. LOUIS DISTRICT		
Submitted By:	Reviewed By:	Checked By:

Survey Information
 IVORY_LANDING_UPPER_MISSISSIPPI
 UM_SL_ILC_20221005_OT_1
 05 October 2022



LAYERS

- River Mile
- Sailing Line
- 9' below LWRP2014 Surface
- 12' below LWRP2014 Surface
- 14' below LWRP2014 Surface

Depths shown are below LWRP2014 Surface

Aids to Navigation

- Green
- Red
- Junction
- Green Buoy
- Red Buoy
- Training Structure
- Revetment

NOTES:
 Horizontal Coordinate System: North American Datum of 1983 (NAD83), projected to the State Plane Coordinate System (SPCS), Missouri East Zone. Distance units in U.S. Survey Feet.
 Vertical Datum: Soundings are shown in feet and indicate depths below the 2014 Low Water Reference Plane.
 The information depicted on this map represents the results of a survey conducted on the date indicated and can only be considered to represent the general condition existing at that time.
 The location of navigation aids are based on and provided by the U.S. Coast Guard.

Reach Number
 2 of 2