

DISCLAIMER: The data represents the results of data collection for a specific US Army Corps of Engineers project. It is not intended for use in any other project. The user assumes all liability for any use of the data for any purpose other than that intended by the Corps of Engineers. The US Government makes no warranty, representation or assurance, including the accuracy, completeness, or timeliness of the data furnished. The United States shall be liable to the maximum extent permitted by law for any damages, including reasonable attorneys' fees, caused by the use of the data furnished to the user. These data shall be used only for the purposes intended by the US Government and are not to be used for any other purpose without the express written consent of the US Army Corps of Engineers.

U.S. ARMY CORPS OF ENGINEERS ST. LOUIS DISTRICT		
Submitted By:	Reviewed By:	Checked By:

Survey Information
 IVORY_LANDING_UPPER_MISSISSIPPI
 UM_SL_ILC_20221005_BD_2
 05 October 2022



LAYERS

- River Mile
- Sailing Line
- 9' below LWRP2014 Surface
- 12' below LWRP2014 Surface
- 14' below LWRP2014 Surface

Depths shown are below LWRP2014 Surface

Aids to Navigation

- Green Buoy
- Red Buoy
- Junction
- Training Structure
- Revetment

NOTES:
 Horizontal Coordinate System: North American Datum of 1983 (NAD83), projected to the State Plane Coordinate System (SPCS), Missouri East Zone. Distance units in U.S. Survey Feet.
 Vertical Datum: Soundings are shown in feet and indicate depths below the 2014 Low Water Reference Plane.
 The information depicted on this map represents the results of a survey conducted on the date indicated and can only be considered to represent the general condition existing at that time.
 The location of navigation aids are based on and provided by the U.S. Coast Guard.

Reach Number
 1 of 2

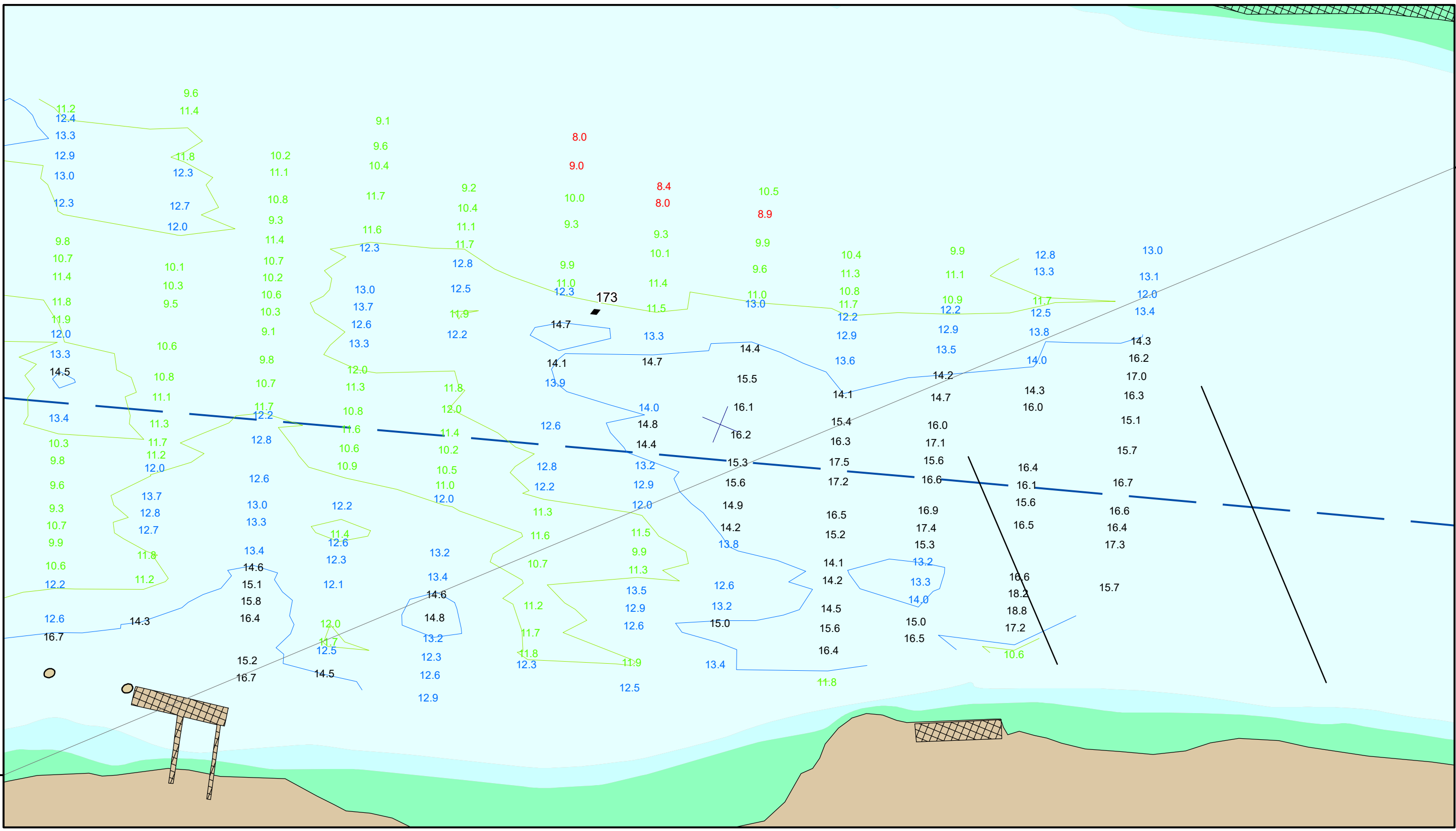


Distribution Liability: The data represents the results of data collection... The data is only valid for the stated use, current time and date... The user shall be responsible for the accuracy of the data for their intended purpose.

Approval table with columns: Surveyed By, Plotted By, Checked By. Includes U.S. Army Corps of Engineers St. Louis District header.

Survey Information
IVORY_LANDING_UPPER_MISSISSIPPI
UM_SL_ILC_20221005_BD_2
05 October 2022

Reach Number
2 of 2



90°15'W

90°15'W



LAYERS
◆ River Mile
— Sailing Line
— 9' below LWRP2014 Surface
— 12' below LWRP2014 Surface
— 14' below LWRP2014 Surface
Depths shown are below LWRP2014 Surface

Aids to Navigation
● Green
● Red
● Junction
▲ Green Buoy
▲ Red Buoy
— Training Structure
▨ Revetment

NOTES:
Horizontal Coordinate System: North American Datum of 1983 (NAD83), projected to the State Plane Coordinate System (SPCS), Missouri East Zone. Distance units in U.S. Survey Feet.
Vertical Datum: Soundings are shown in feet and indicate depths below the 2014 Low Water Reference Plane.
The information depicted on this map represents the results of a survey conducted on the date indicated and can only be considered to represent the general condition existing at that time.
The location of navigation aids are based on and provided by the U.S. Coast Guard.