

**DISCLAIMER:** The data represented on this map is the result of a survey conducted for a specific purpose and is not intended for any other use. The user of this map assumes all responsibility for the accuracy and reliability of the data for any purpose other than that for which it was collected. The user of this map also assumes all responsibility for the accuracy and reliability of the data for any purpose other than that for which it was collected. The user of this map also assumes all responsibility for the accuracy and reliability of the data for any purpose other than that for which it was collected.

U.S. ARMY CORPS OF ENGINEERS ST. LOUIS DISTRICT		
Submitted By:	Reviewed By:	Checked By:

**Survey Information**  
 IVORY\_LANDING\_UPPER\_MISSISSIPPI  
 UM\_SL\_ILC\_20221205\_BD\_1  
 05 December 2022



**LAYERS**

- River Mile
- Sailing Line
- 9' below LWRP2014 Surface
- 12' below LWRP2014 Surface
- 14' below LWRP2014 Surface

Depths shown are below LWRP2014 Surface

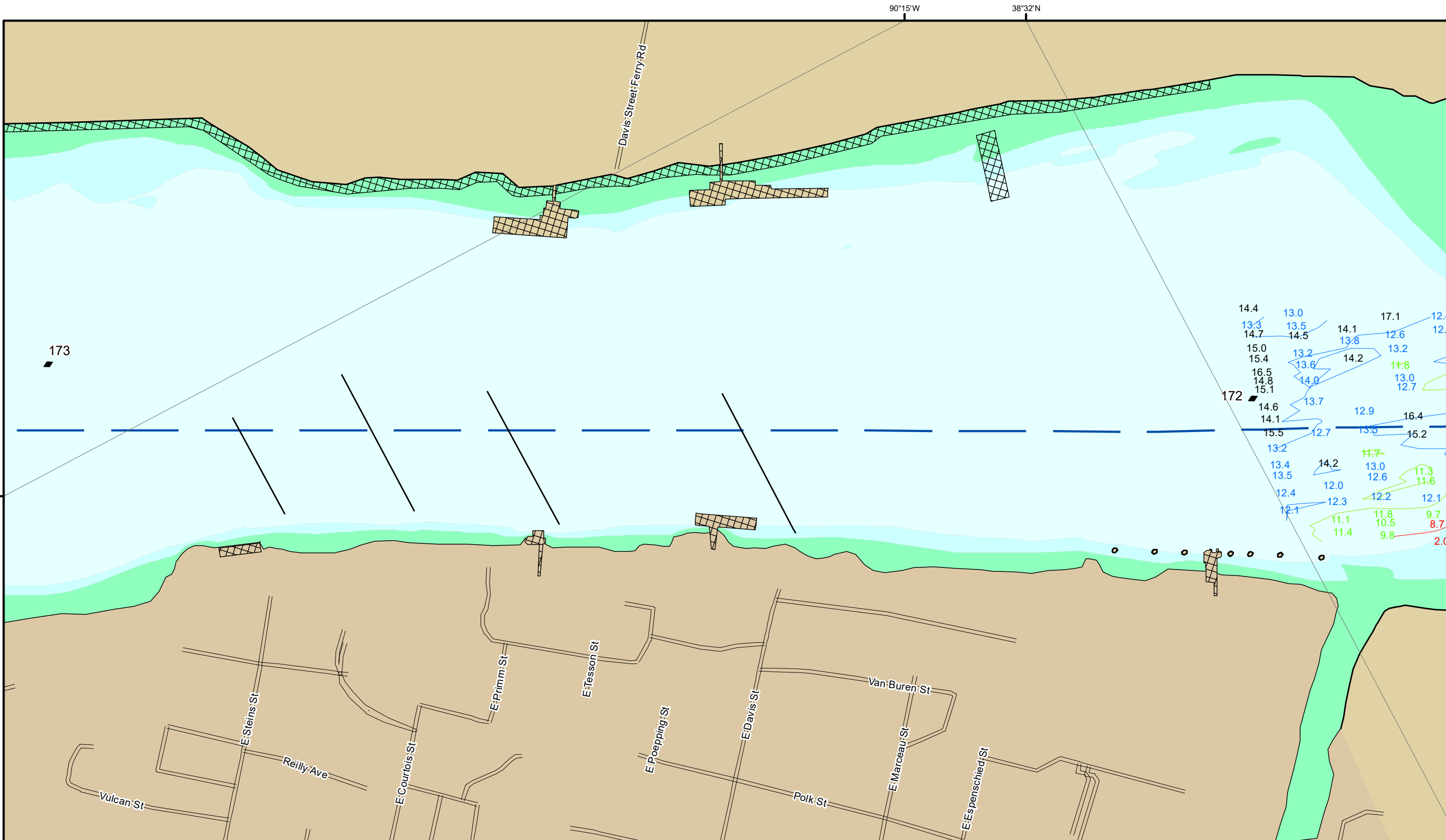
**Aids to Navigation**

- Green
- Red
- Junction
- Green Buoy
- Red Buoy
- Training Structure
- Revetment

**NOTES:**  
 Horizontal Coordinate System:  
 North American Datum of 1983 (NAD83), projected to the State Plane Coordinate System (SPCS), Missouri East Zone. Distance units in U.S. Survey Feet.  
 Vertical Datum:  
 Soundings are shown in feet and indicate depths below the 2014 Low Water Reference Plane.  
 The information depicted on this map represents the results of a survey conducted on the date indicated and can only be considered to represent the general condition existing at that time.  
 The location of navigation aids are based on and provided by the U.S. Coast Guard.



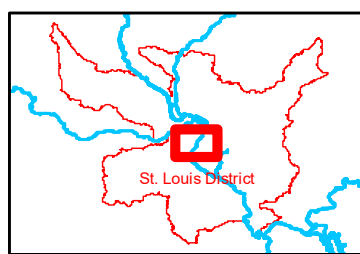




**DISCLAIMER:** The United States Government furnishes this information for a specific purpose and does not warrant its accuracy or completeness. It is provided as is, with all faults. The user assumes all liability for any use of the information. The United States Government does not assume any liability for any damages or losses, including consequential damages, arising from the use of this information. The United States Government is not responsible for any errors or omissions in this information. The United States Government is not responsible for any delays in the delivery of this information. The United States Government is not responsible for any changes in this information. The United States Government is not responsible for any updates to this information. The United States Government is not responsible for any deletions of this information. The United States Government is not responsible for any additions to this information. The United States Government is not responsible for any modifications to this information. The United States Government is not responsible for any deletions of this information. The United States Government is not responsible for any additions to this information. The United States Government is not responsible for any modifications to this information.

Surveyed By:	Checked By:	Drawn By:
Submitted:	Reviewed:	Checked:
Approved:	Approved:	Approved:

**Survey Information**  
 IVORY\_LANDING\_UPPER\_MISSISSIPPI  
 UM\_SL\_ILC\_20221205\_BD\_1  
 05 December 2022



**LAYERS**

- River Mile
- Sailing Line
- 9' below LWRP2014 Surface
- 12' below LWRP2014 Surface
- 14' below LWRP2014 Surface

Depths shown are below LWRP2014 Surface

**Aids to Navigation**

- Green
- Red
- Junction
- Green Buoy
- Red Buoy
- Training Structure
- Revetment

A compass rose showing cardinal directions (N, S, E, W) and a scale bar in feet (0, 250, 500, 750, 1,000).

**NOTES:**  
 Horizontal Coordinate System:  
 North American Datum of 1983 (NAD83), projected to the State Plane Coordinate System (SPCS), Missouri East Zone. Distance units in U.S. Survey Feet.  
 Vertical Datum:  
 Soundings are shown in feet and indicate depths below the 2014 Low Water Reference Plane.  
 The information depicted on this map represents the results of a survey conducted on the date indicated and can only be considered to represent the general condition existing at that time.  
 The location of navigation aids are based on and provided by the U.S. Coast Guard.

**Reach Number 24 of 44**