

DISCLAIMER: The United States Government makes no warranty, express or implied, concerning the accuracy, completeness, or timeliness of the information and data furnished. The United States Government shall be liable for damages only for negligence of its employees in the performance of their official duties. The information and data are provided for informational purposes only and are not to be used for any other purpose. These data shall be used at the user's own risk. The user shall be responsible for obtaining any necessary permits or approvals from the appropriate authorities before using these data for any purpose.

Surveyed By:	Revised By:	Checked By:

Survey Information
 IVORY_LANDING_UPPER_MISSISSIPPI
 UM_SL_ILC_20230620_BD_4
 20 June 2023



LAYERS

- River Mile
- Sailing Line
- 9' below LWRP2014 Surface
- 12' below LWRP2014 Surface
- 14' below LWRP2014 Surface

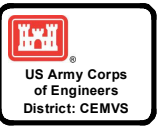
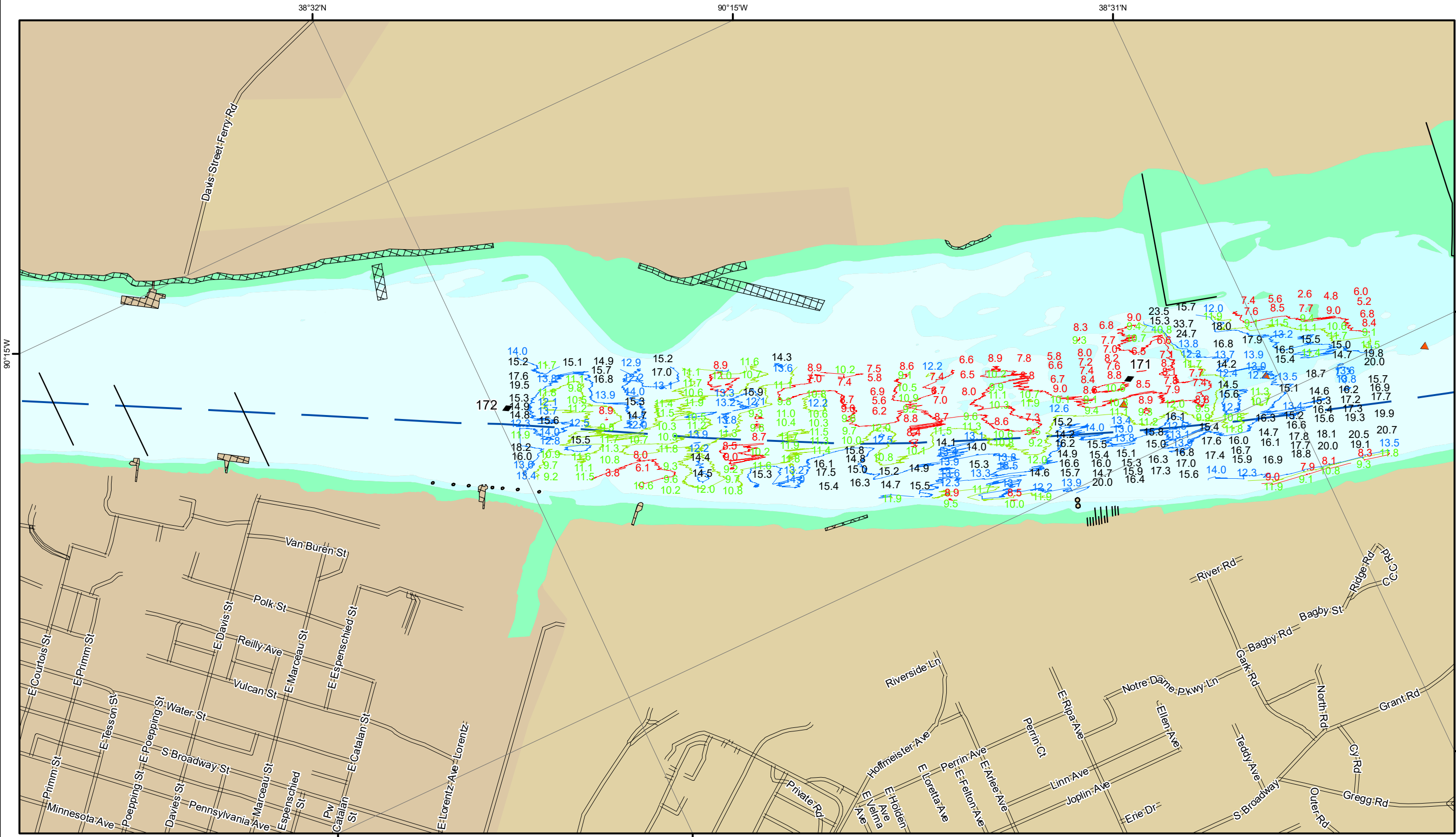
Depths shown are below LWRP2014 Surface

Aids to Navigation

- Green
- Red
- Junction
- Green Buoy
- Red Buoy
- Training Structure
- Revetment

NOTES:
 Horizontal Coordinate System: North American Datum of 1983 (NAD83), projected to the State Plane Coordinate System (SPCS), Missouri East Zone. Distance units in U.S. Survey Feet.
 Vertical Datum: Soundings are shown in feet and indicate depths below the 2014 Low Water Reference Plane.
 The information depicted on this map represents the results of a survey conducted on the date indicated and can only be considered to represent the general condition existing at that time.
 The location of navigation aids are based on and provided by the U.S. Coast Guard.

Reach Number
 22 of 44



US Army Corps of Engineers District: CEMVS

Distribution Liability: The data represents the results of data collection/processing for a specific US Army Corps of Engineers project. The data is not intended for use in any other project. As such, it is only valid for the stated use, current time and place. The user is responsible for the accuracy of the data for any other purpose. The data is not intended for use in any other project. The data is not intended for use in any other project. The data is not intended for use in any other project.

Surveyed By:	Revised By:	Checked By:
Submitted:	Approved:	Agreed:

Survey Information

IVORY_LANDING_UPPER_MISSISSIPPI
 UM_SL_ILC_20230620_BD_4
 20 June 2023



LAYERS

- River Mile
- Sailing Line
- 9' below LWRP2014 Surface
- 12' below LWRP2014 Surface
- 14' below LWRP2014 Surface

Depths shown are below LWRP2014 Surface

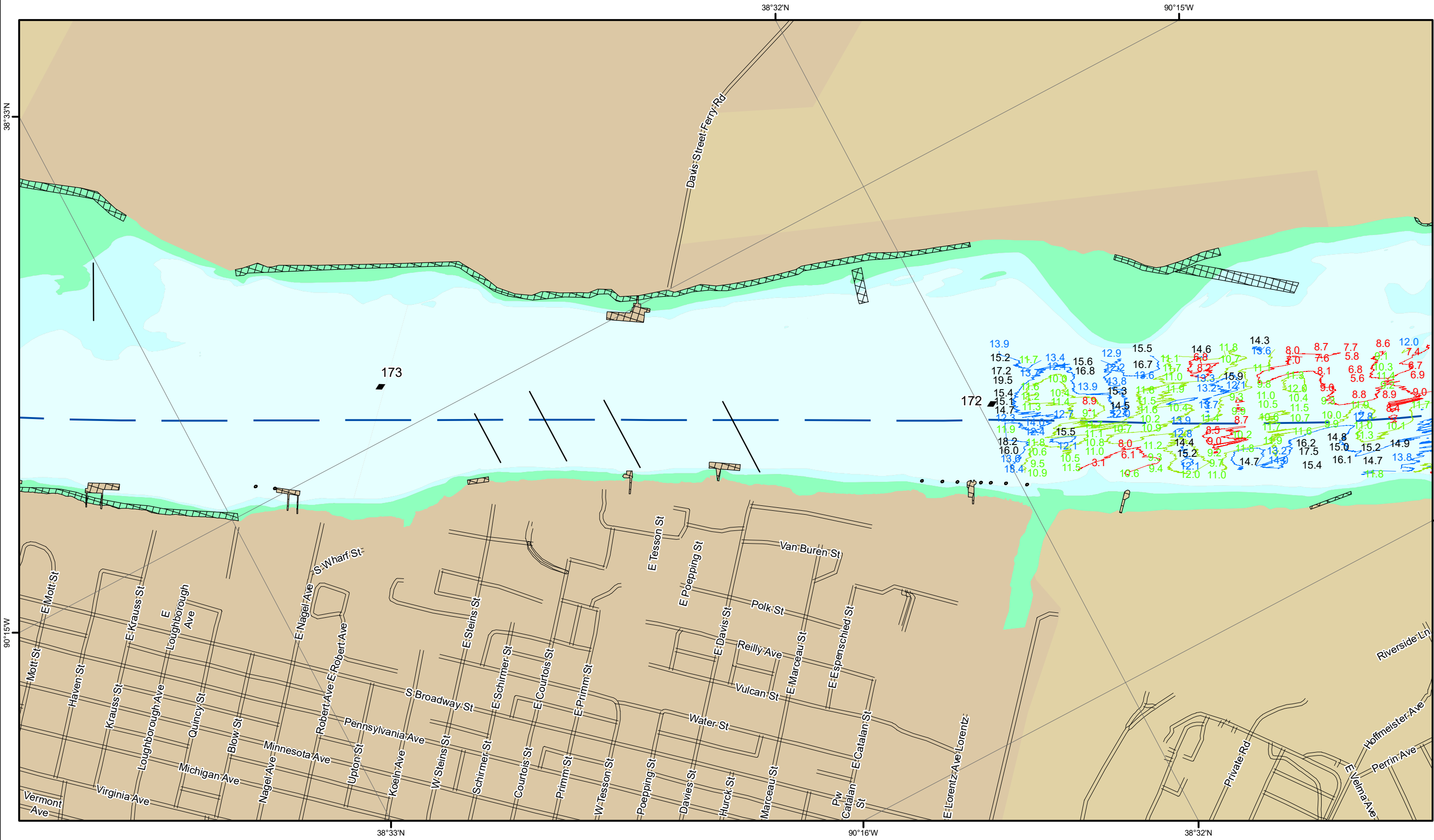
Aids to Navigation

- Green
- Red
- Junction
- Green Buoy
- Red Buoy
- Training Structure
- Revetment

Scale: 0, 490, 980, 1,470, 1,960 Feet

NOTES:
 Horizontal Coordinate System: North American Datum of 1983 (NAD83), projected to the State Plane Coordinate System (SPCS), Missouri East Zone. Distance units in U.S. Survey Feet.
 Vertical Datum: Soundings are shown in feet and indicate depths below the 2014 Low Water Reference Plane.
 The information depicted on this map represents the results of a survey conducted on the date indicated and can only be considered to represent the general condition existing at that time.
 The location of navigation aids are based on and provided by the U.S. Coast Guard.

Reach Number 23 of 44



DISCLAIMER: The data on this map represents the results of a survey conducted on the date indicated and can only be considered to represent the general condition existing at that time. The location of navigation aids are based on and provided by the U.S. Coast Guard.

WARRANTY: The United States Government makes no warranty, expressed or implied, concerning the accuracy, completeness, or timeliness of the information and data furnished. The United States Government shall be held harmless from any and all claims, damages, and expenses, including reasonable attorneys' fees, that may be incurred by any person or organization as a result of the use of the information and data furnished. These data shall be used for informational purposes only and shall not be used for any other purpose without the express written consent of the United States Government.

Surveyed By:	Revised By:	Checked By:

Survey Information

IVORY_LANDING_UPPER_MISSISSIPPI
 UM_ST_ILC_20230620_BD_4
 20 June 2023

Reach Number
 24 of 44



LAYERS

- River Mile
- Sailing Line
- 9' below LWRP2014 Surface
- 12' below LWRP2014 Surface
- 14' below LWRP2014 Surface

Depths shown are below LWRP2014 Surface

Aids to Navigation

- Green
- Red
- Junction
- Green Buoy
- Red Buoy
- Training Structure
- Revetment

NOTES:
 Horizontal Coordinate System: North American Datum of 1983 (NAD83), projected to the State Plane Coordinate System (SPCS), Missouri East Zone. Distance units in U.S. Survey Feet.
 Vertical Datum: Soundings are shown in feet and indicate depths below the 2014 Low Water Reference Plane.
 The information depicted on this map represents the results of a survey conducted on the date indicated and can only be considered to represent the general condition existing at that time.
 The location of navigation aids are based on and provided by the U.S. Coast Guard.