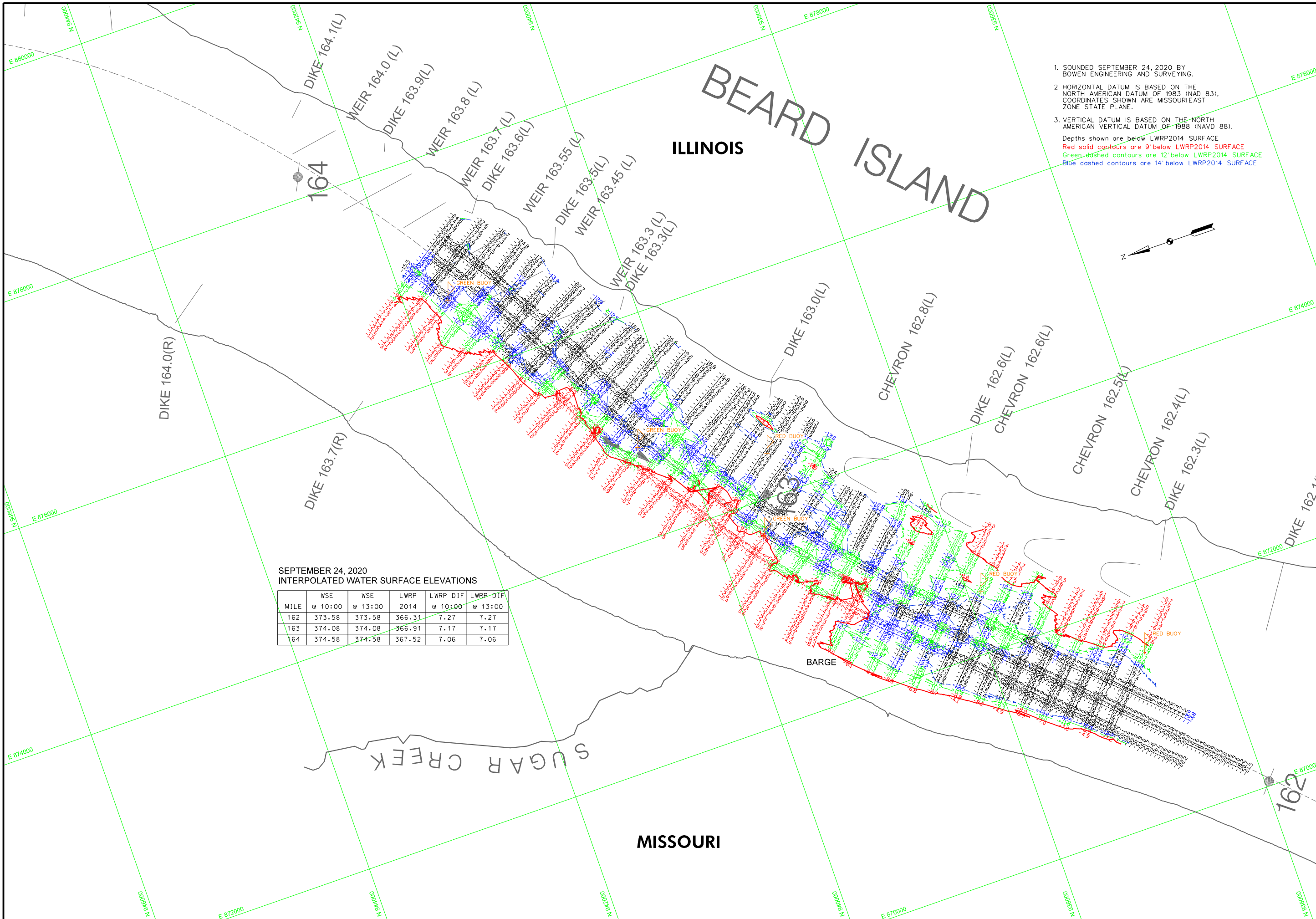
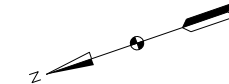


1. SOUNDED SEPTEMBER 24, 2020 BY BOWEN ENGINEERING AND SURVEYING.
2. HORIZONTAL DATUM IS BASED ON THE NORTH AMERICAN DATUM OF 1983, COORDINATES SHOWN ARE MISSOURI EAST ZONE STATE PLANE.
3. VERTICAL DATUM IS BASED ON THE NORTH AMERICAN VERTICAL DATUM OF 1988 (NAVD 88).

Depths shown are below LWRP2014 SURFACE
 Red solid contours are 9' below LWRP2014 SURFACE
 Green dashed contours are 12' below LWRP2014 SURFACE
 Blue dashed contours are 14' below LWRP2014 SURFACE



SEPTEMBER 24, 2020
INTERPOLATED WATER SURFACE ELEVATIONS

MILE	WSE		LWRP 2014	LWRP DIF	
	@ 10:00	@ 13:00		@ 10:00	@ 13:00
162	373.58	373.58	366.31	7.27	7.27
163	374.08	374.08	366.91	7.17	7.17
164	374.58	374.58	367.52	7.06	7.06

GAGE RECORD

ST. LOUIS, MO	CHESTER I.L.
JEFFERSON BARRACKS BRICKEY'S LANDING, MO	
379.58	340.73
377.34	337.38
388.70	309.9
369.83	340.33
3.9076000 A, 1115000	UNAVAILABLE
24 SEP 2020	6.7410000 E, 07013000

U.S. ARMY ENGINEER DIVISION
CORPS OF ENGINEERS
ST. LOUIS, MISSOURI

UPPER MISSISSIPPI RIVER BASIN
MISSISSIPPI RIVER

Surveyed by: BOWEN ENGINEERING	Survey Date: SEPTEMBER 24, 2020
Drawn by: A	Reviewed by: K
SUBMITTED: X	APPROVED: X
File name: E:\PROJECTS\2020\20200924\20200924.DWG	Plot date: #DATE#

