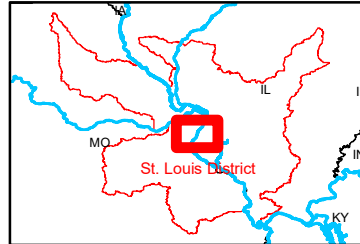


DISCLAIMER: The data represents the results of data collection for a specific US Army Corps of Engineers project. It is not intended for use in any other project. The US Government makes no warranty, expressed or implied, concerning the accuracy, completeness, or timeliness of the data. The user shall be responsible for verifying the accuracy of the data before use. These data shall be used for the purpose intended and shall not be used for any other purpose without the express written consent of the US Army Corps of Engineers. The user shall be responsible for obtaining any necessary permits or approvals from the appropriate authorities before using these data.

U.S. ARMY CORPS OF ENGINEERS ST. LOUIS DISTRICT		
Submitted By:	Surveyed By:	Checked By:
Recommended:	Revised By:	Approved:

Survey Information
 IVORY_LANDING_UPPER_MISSISSIPPI
 UM_SL_ILC_20230626_BD_2
 26 June 2023



LAYERS

- River Mile
- Sailing Line
- 9' below LWRP2014 Surface
- 12' below LWRP2014 Surface
- 14' below LWRP2014 Surface

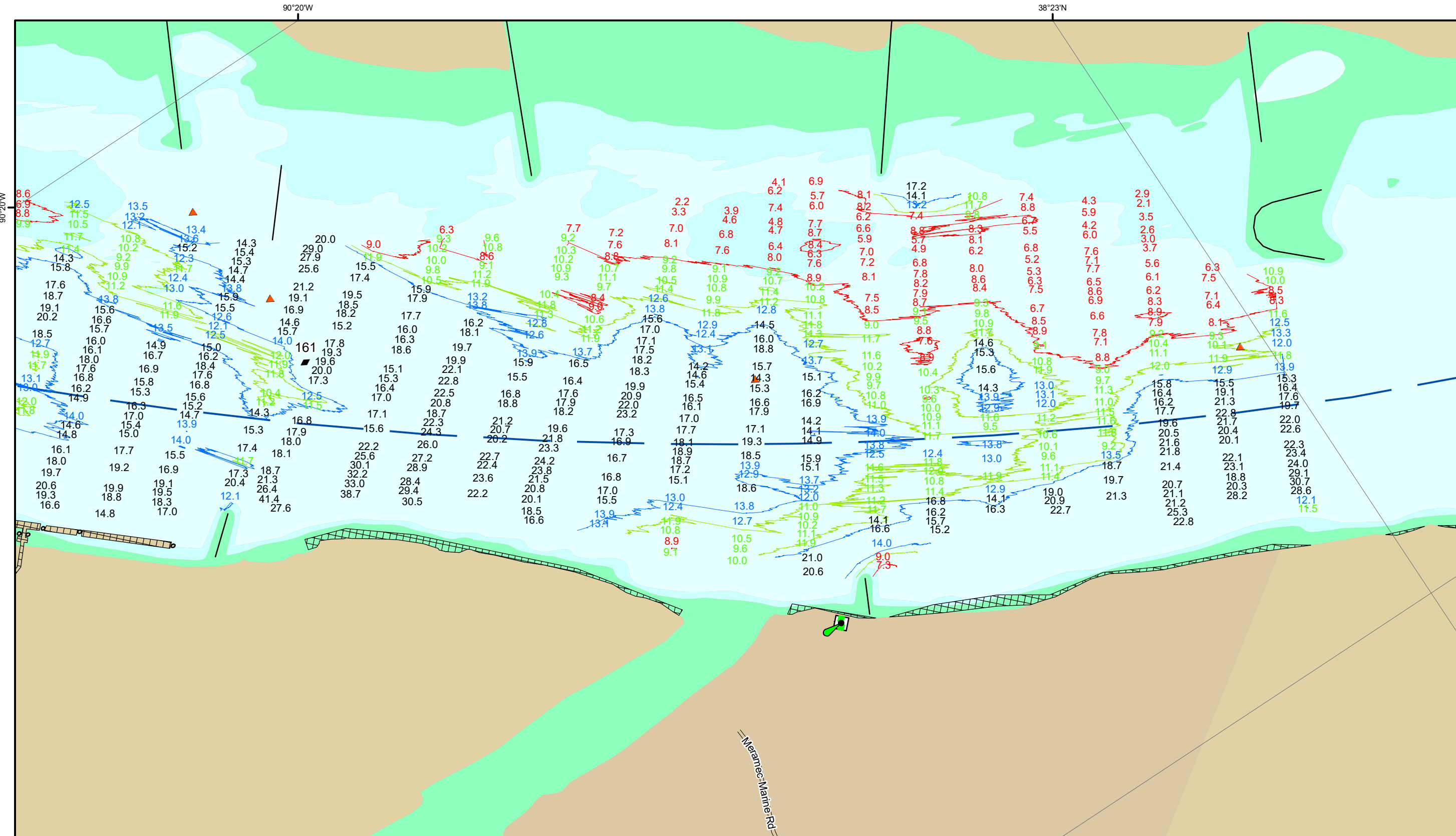
Depths shown are below LWRP2014 Surface

Aids to Navigation

- Green
- Red
- Junction
- Green Buoy
- Red Buoy
- Training Structure
- Revetment

NOTES:
 Horizontal Coordinate System: North American Datum of 1983 (NAD83), projected to the State Plane Coordinate System (SPCS), Missouri East Zone. Distance units in U.S. Survey Feet.
 Vertical Datum: Soundings are shown in feet and indicate depths below the 2014 Low Water Reference Plane.
 The information depicted on this map represents the results of a survey conducted on the date indicated and can only be considered to represent the general condition existing at that time.
 The location of navigation aids are based on and provided by the U.S. Coast Guard.

Reach Number
 8 of 44



DISCLAIMER: The data on this map represents the results of a survey conducted on behalf of the U.S. Army Corps of Engineers. It is not intended for use in any other project or for any other purpose. The user assumes all liability for any use of this data other than that intended by the U.S. Army Corps of Engineers. The U.S. Army Corps of Engineers makes no warranty, expressed or implied, concerning the accuracy, completeness, or timeliness of the data furnished. The U.S. Army Corps of Engineers is not responsible for any errors or omissions in this data. These data shall be used for the purpose intended and shall not be used for any other purpose without the express written consent of the U.S. Army Corps of Engineers.

Surveyed By:	Revised By:	Checked By:

Survey Information
 IVORY_LANDING_UPPER_MISSISSIPPI
 UM_SL_ILC_20230626_BD_2
 26 June 2023



LAYERS

- River Mile
- Sailing Line
- 9' below LWRP2014 Surface
- 12' below LWRP2014 Surface
- 14' below LWRP2014 Surface

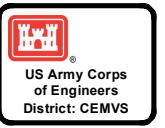
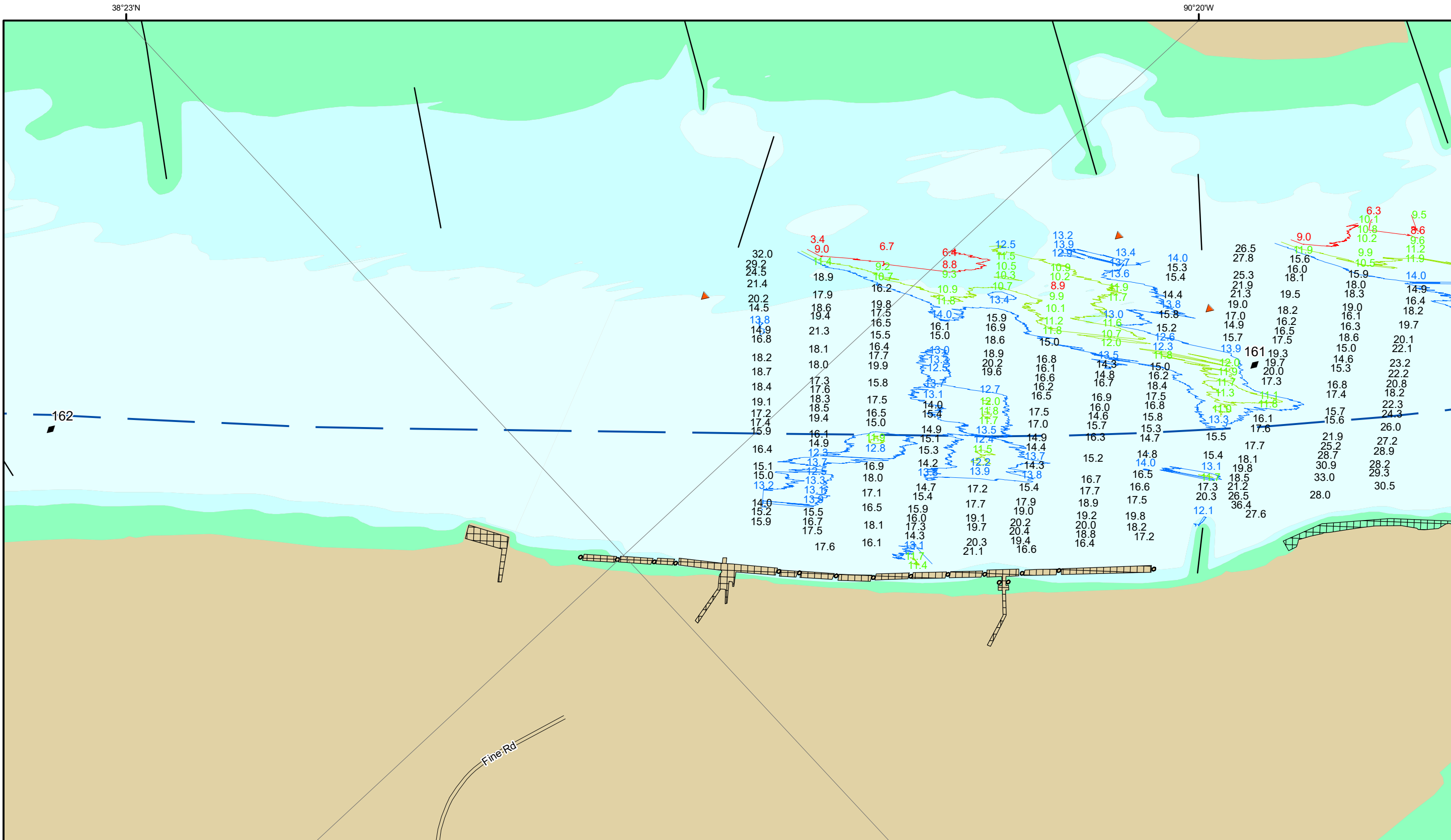
Depths shown are below LWRP2014 Surface

Aids to Navigation

- Green
- Red
- Junction
- Green Buoy
- Red Buoy
- Training Structure
- Revetment

NOTES:
 Horizontal Coordinate System: North American Datum of 1983 (NAD83), projected to the State Plane Coordinate System (SPCS), Missouri East Zone. Distance units in U.S. Survey Feet.
 Vertical Datum: Soundings are shown in feet and indicate depths below the 2014 Low Water Reference Plane.
 The information depicted on this map represents the results of a survey conducted on the date indicated and can only be considered to represent the general condition existing at that time.
 The location of navigation aids are based on and provided by the U.S. Coast Guard.

Reach Number
 9 of 44



Distribution Liability: The data represents the results of data collection for a specific US Army Corps of Engineers project. It is not to be used for any other purpose. The user assumes all liability for the use of the data. The US Army Corps of Engineers makes no warranty, expressed or implied, concerning the accuracy, completeness, or timeliness of the data furnished. The user shall be responsible for the interpretation of the data and the results of any analysis performed thereon. The user shall be responsible for the protection of the data and the results of any analysis performed thereon. The user shall be responsible for the protection of the data and the results of any analysis performed thereon. The user shall be responsible for the protection of the data and the results of any analysis performed thereon.

Surveyed By:	Revised By:	Checked By:



LAYERS

- River Mile
- Sailing Line
- 9' below LWRP2014 Surface
- 12' below LWRP2014 Surface
- 14' below LWRP2014 Surface

Depths shown are below LWRP2014 Surface

Aids to Navigation

- Green
- Red
- Junction
- Green Buoy
- Red Buoy
- Training Structure
- Revetment

NOTES:
 Horizontal Coordinate System: North American Datum of 1983 (NAD83), projected to the State Plane Coordinate System (SPCS), Missouri East Zone. Distance units in U.S. Survey Feet.
 Vertical Datum: Soundings are shown in feet and indicate depths below the 2014 Low Water Reference Plane.
 The information depicted on this map represents the results of a survey conducted on the date indicated and can only be considered to represent the general condition existing at that time.
 The location of navigation aids are based on and provided by the U.S. Coast Guard.

Survey Information
 IVORY_LANDING_UPPER_MISSISSIPPI
 UM_SL_ILC_20230626_BD_2
 26 June 2023

Reach Number
 10 of 44