

LAYERS

- ◆ River Mile
- Sailing Line
- 9' below LWRP2014 Surface
- 12' below LWRP2014 Surface
- 14' below LWRP2014 Surface

Depths shown are below LWRP2014 Surface

Aids to Navigation

- Green
- Red
- Junction
- ▲ Green Buoy
- ▲ Red Buoy
- Training Structure
- ▨ Revetment

NOTES:
 Horizontal Coordinate System:
 North American Datum of 1983 (NAD83), projected to the State Plane Coordinate System (SPCS), Missouri East Zone. Distance units in U.S. Survey Feet.
 Vertical Datum:
 Soundings are shown in feet and indicate depths below the 2014 Low Water Reference Plane.
 The information depicted on this map represents the results of a survey conducted on the date indicated and can only be considered to represent the general condition existing at that time.
 The location of navigation aids are based on and provided by the U.S. Coast Guard.



DISCLAIMER: The United States Government furnishes this information for a specific purpose and does not warrant its accuracy or completeness. It is provided as a service to the user and is not to be used for any other purpose. The user assumes all liability for any errors or omissions in this information. The user also assumes all liability for any damage or loss resulting from the use of this information. This information is not to be used for any purpose other than that for which it was provided. The user agrees to indemnify and hold the United States Government harmless from any and all claims, damages, and expenses, including reasonable attorneys' fees, that may be asserted against or incurred by the United States Government or its employees, agents, or contractors, or any subcontractors, in connection with or arising out of the use of this information.

U.S. ARMY CORPS OF ENGINEERS ST. LOUIS DISTRICT		
Surveyed By:	Reviewed By:	Checked By:
Submitted:	Documented:	Approved:

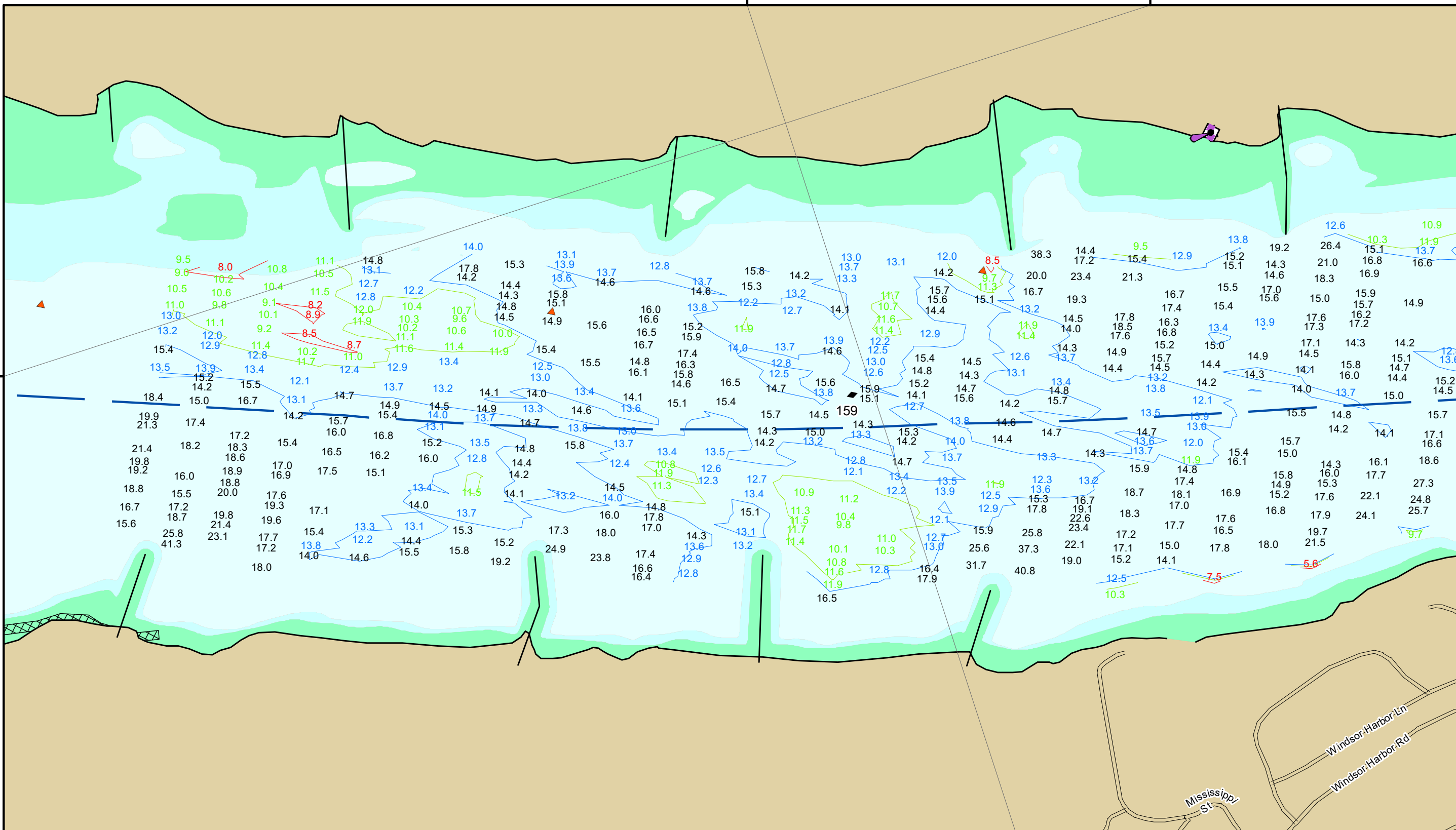
Survey Information
 IVORY_LANDING_UPPER_MISSISSIPPI
 UM_SL_ILC_20221201_AD_1
 01 December 2022

Reach Number
 6 of 44

38°22'N

90°21'W

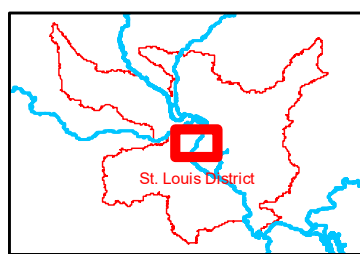
90°21'W



DISCLAIMER: The United States Government furnishes this information for a specific purpose and does not warrant its accuracy or completeness. It is provided as a service to the user and is not to be used for any other purpose. The user assumes all liability for any errors or omissions in the data and for any consequences arising from its use. The information is provided as a service to the user and is not to be used for any other purpose. The user assumes all liability for any errors or omissions in the data and for any consequences arising from its use.

U.S. ARMY CORPS OF ENGINEERS ST. LOUIS DISTRICT		
Surveyed By:	Reviewed By:	Checked By:

Survey Information
 IVORY_LANDING_UPPER_MISSISSIPPI
 UM_SL_ILC_20221201_AD_1
 01 December 2022



LAYERS

- River Mile
- Sailing Line
- 9' below LWRP2014 Surface
- 12' below LWRP2014 Surface
- 14' below LWRP2014 Surface

Depths shown are below LWRP2014 Surface

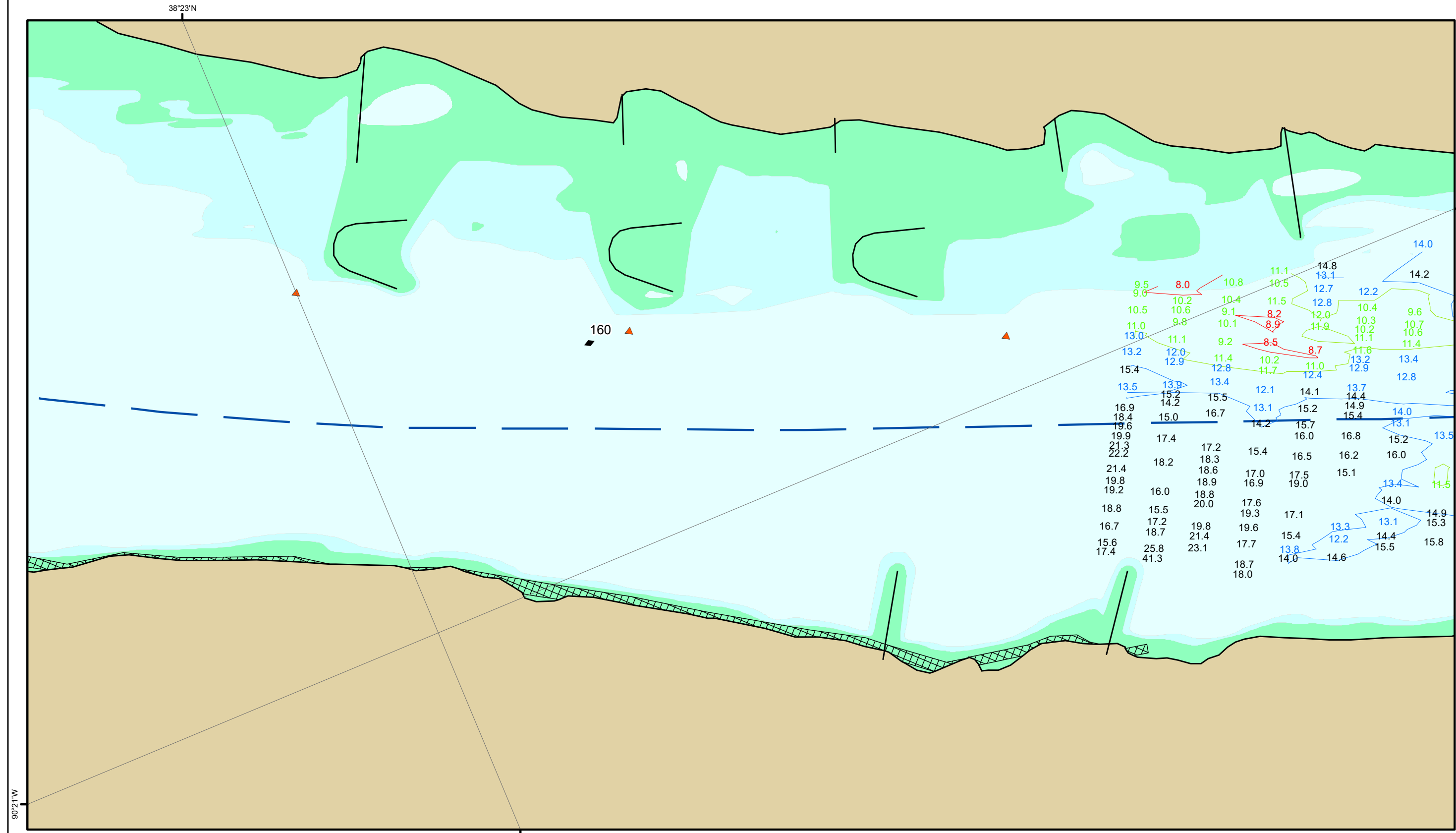
Aids to Navigation

- Green
- Red
- Junction
- Green Buoy
- Red Buoy
- Training Structure
- Revetment

Scale: 0, 250, 500, 750, 1,000 Feet

NOTES:
 Horizontal Coordinate System:
 North American Datum of 1983 (NAD83), projected to the State Plane Coordinate System (SPCS), Missouri East Zone. Distance units in U.S. Survey Feet.
 Vertical Datum:
 Soundings are shown in feet and indicate depths below the 2014 Low Water Reference Plane.
 The information depicted on this map represents the results of a survey conducted on the date indicated and can only be considered to represent the general condition existing at that time.
 The location of navigation aids are based on and provided by the U.S. Coast Guard.

Reach Number
 7 of 44



US Army Corps of Engineers District: CEMVS

Disclaimer: The data on this map represents the results of a survey conducted on the date indicated and can only be considered to represent the general condition existing at that time. The location of navigation aids are based on and provided by the U.S. Coast Guard.

U.S. ARMY CORPS OF ENGINEERS ST. LOUIS DISTRICT

Surveyed By:	Reviewed By:	Checked By:
Submitted:	Documented:	Approved:

Survey Information

IVORY_LANDING_UPPER_MISSISSIPPI
 UM_SL_ILC_20221201_AD_1
 01 December 2022

Reach Number
 8 of 44



LAYERS

- River Mile
- Sailing Line
- 9' below LWRP2014 Surface
- 12' below LWRP2014 Surface
- 14' below LWRP2014 Surface

Depths shown are below LWRP2014 Surface

Aids to Navigation

- Green
- Red
- Junction
- Green Buoy
- Red Buoy
- Training Structure
- Revetment

NOTES:

Horizontal Coordinate System:
 North American Datum of 1983 (NAD83), projected to the State Plane Coordinate System (SPCS), Missouri East Zone. Distance units in U.S. Survey Feet.

Vertical Datum:
 Soundings are shown in feet and indicate depths below the 2014 Low Water Reference Plane.

The information depicted on this map represents the results of a survey conducted on the date indicated and can only be considered to represent the general condition existing at that time.

The location of navigation aids are based on and provided by the U.S. Coast Guard.