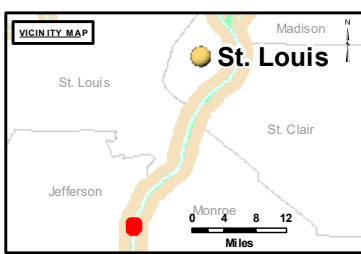


Disclaimer: The information on this chart is for informational purposes only and is not to be used for navigation. The information is provided as a service to the public and is not a warranty of any kind. The information is provided as a service to the public and is not a warranty of any kind. The information is provided as a service to the public and is not a warranty of any kind.

U.S. ARMY CORPS OF ENGINEERS ST. LOUIS DISTRICT			
Submitted By:	Reviewed By:	Checked By:	Approved By:

Survey Information
 IVORY_LANDING_UPPER_MISSISSIPPI
 UM_SL_ILC_20230627_BD_1
 27 June 2023



LAYERS

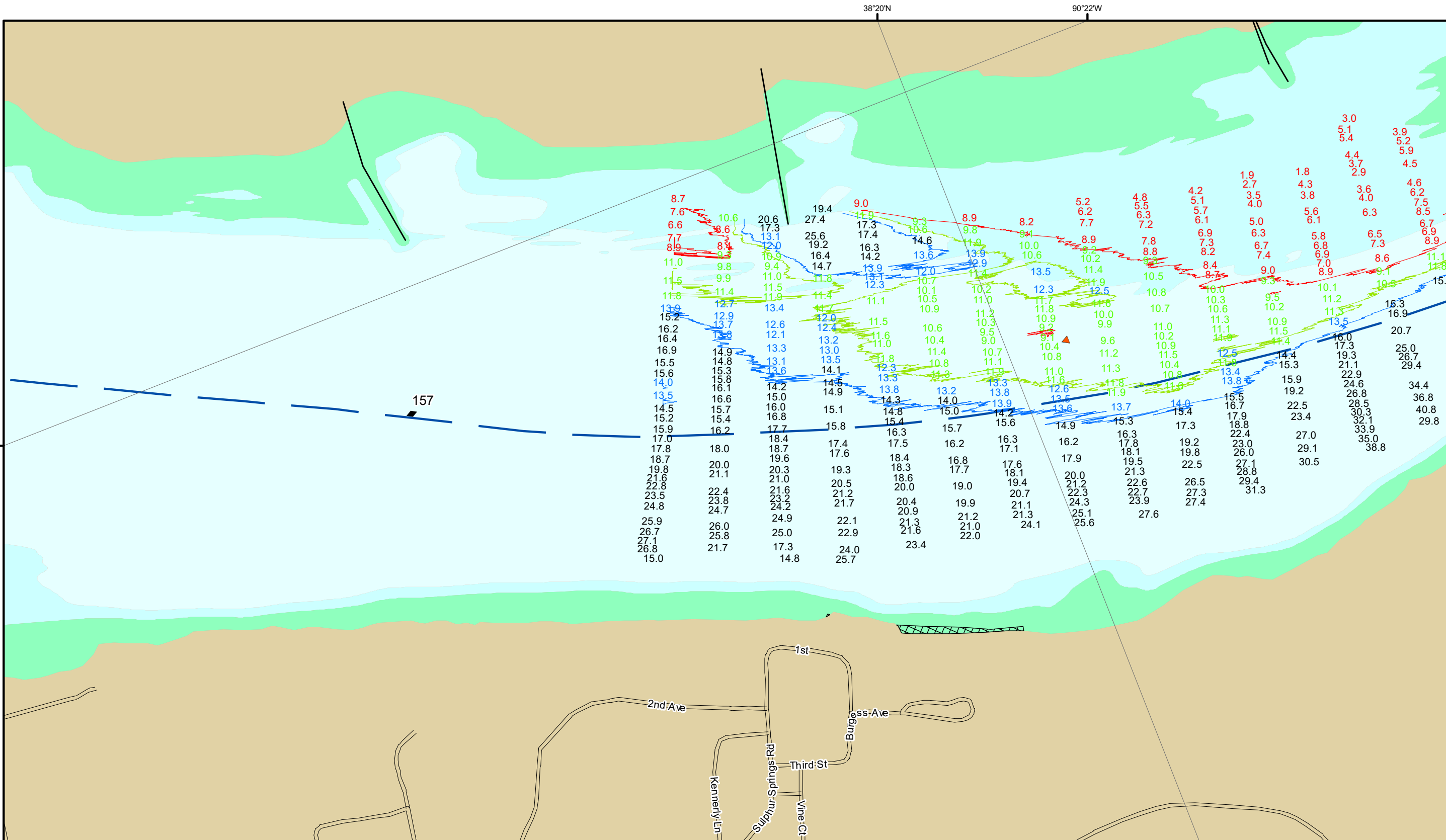
- River Mile
- Sailing Line
- 9' below LWRP2014 Surface
- 12' below LWRP2014 Surface
- 14' below LWRP2014 Surface

Depths shown are below LWRP2014 Surface

Aids to Navigation

- Green
- Red
- Junction
- Green Buoy
- Red Buoy
- Training Structure
- Revetment

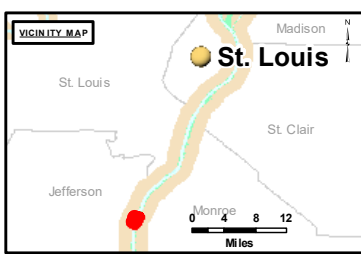
NOTES:
 Horizontal Coordinate System:
 North American Datum of 1983 (NAD83), projected to the State Plane Coordinate System (SPCS), Missouri East Zone. Distance units in U.S. Survey Feet.
 Vertical Datum:
 Soundings are shown in feet and indicate depths below the 2014 Low Water Reference Plane.
 The information depicted on this map represents the results of a survey conducted on the date indicated and can only be considered to represent the general condition existing at that time.
 The location of navigation aids are based on and provided by the U.S. Coast Guard.



DISCLAIMER: The information on this map is for informational purposes only and is not intended for navigation. The user assumes all responsibility for the use of this information. The U.S. Army Corps of Engineers does not warrant the accuracy or completeness of the information. The U.S. Army Corps of Engineers is not responsible for any errors or omissions in this information. The U.S. Army Corps of Engineers is not responsible for any damages or losses resulting from the use of this information. The U.S. Army Corps of Engineers is not responsible for any actions taken based on this information. The U.S. Army Corps of Engineers is not responsible for any actions taken based on this information.

U.S. ARMY CORPS OF ENGINEERS ST. LOUIS DISTRICT			
Submitted By	Reviewed By	Checked By	Approved By

Survey Information
 IVORY_LANDING_UPPER_MISSISSIPPI
 UM_SL_ILC_20230627_BD_1
 27 June 2023



LAYERS

- River Mile
- Sailing Line
- 9' below LWRP2014 Surface
- 12' below LWRP2014 Surface
- 14' below LWRP2014 Surface

Depths shown are below LWRP2014 Surface

Aids to Navigation

- Green
- Red
- Junction
- Green Buoy
- Red Buoy
- Training Structure
- Revetment

NOTES:
 Horizontal Coordinate System:
 North American Datum of 1983 (NAD83), projected to the State Plane Coordinate System (SPCS), Missouri East Zone. Distance units in U.S. Survey Feet.
 Vertical Datum:
 Soundings are shown in feet and indicate depths below the 2014 Low Water Reference Plane.
 The information depicted on this map represents the results of a survey conducted on the date indicated and can only be considered to represent the general condition existing at that time.
 The location of navigation aids are based on and provided by the U.S. Coast Guard.

Reach Number
 4 of 44