



US Army Corps of Engineers  
St. Louis District

GAGE RECORD	
ST. LOUIS, MO	CHESTER L
ZERO N.A.V.D.	379.54
MILE	148.0
LWRP 2014	376.38
02 SEP 2020	4.45(8)00 - 3.91(4)00
JEFFERSON BARRACKS	BRICKEY'S LANDING, MO
377.34	357.38
168.70	146.0
369.63	353.83
	UNAVAILABLE
	7.8(8)00 7.2(4)00

Surveyed by:	BOWEN ENGINEERING	Survey Date:	SEPTEMBER 2, 2020
Drawn by:	X	Reviewed by:	X
Submitted:	X	Approved:	X
File name:	PRE DREDGE SURVEY		

U.S. ARMY ENGINEER DIVISION  
CORPS OF ENGINEERS  
ST. LOUIS, MISSOURI

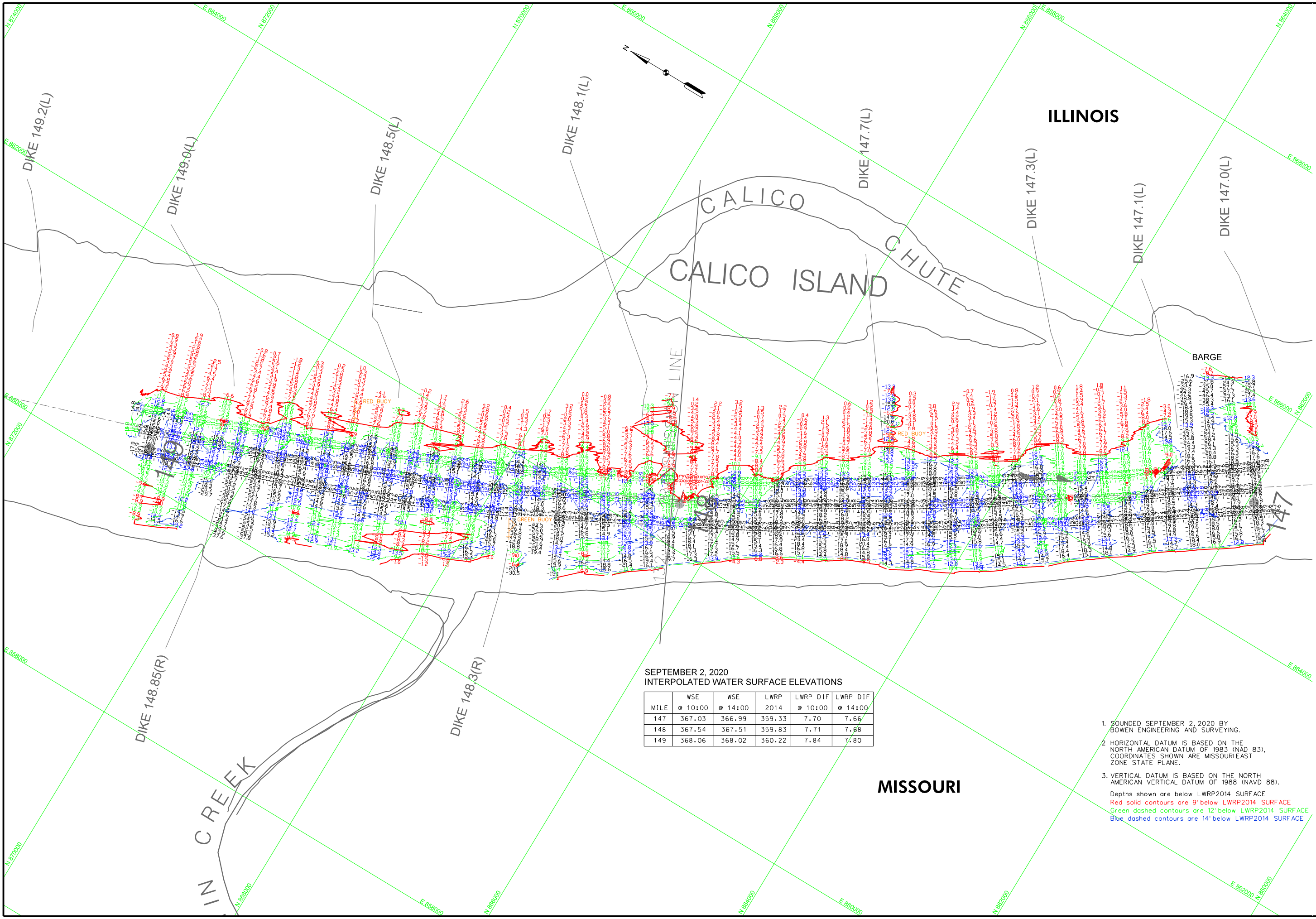
UPPER MISSISSIPPI RIVER BASIN  
MISSISSIPPI RIVER

240 METERS  
800 FEET  
400 FEET

PRE DREDGE SURVEY  
RIVER MILES 149.0 - 147.0

THE INFORMATION DEPICTED ON THIS MAP REPRESENTS THE RESULTS OF A SURVEY CONDUCTED UNDER THE GENERAL CONDITIONS ESTABLISHED BY THE DISTRICT.

PLATE NUMBER  
XX  
SHEET 1 OF 1



SEPTEMBER 2, 2020  
INTERPOLATED WATER SURFACE ELEVATIONS

MILE	WSE @ 10:00	WSE @ 14:00	LWRP 2014	LWRP DIF @ 10:00	LWRP DIF @ 14:00
147	367.03	366.99	359.33	7.70	7.66
148	367.54	367.51	359.83	7.71	7.68
149	368.06	368.02	360.22	7.84	7.80

1. SOUNDED SEPTEMBER 2, 2020 BY BOWEN ENGINEERING AND SURVEYING.
  2. HORIZONTAL DATUM IS BASED ON THE NORTH AMERICAN DATUM OF 1983 (NAD 83), COORDINATES SHOWN ARE MISSOURI EAST ZONE STATE PLANE.
  3. VERTICAL DATUM IS BASED ON THE NORTH AMERICAN VERTICAL DATUM OF 1988 (NAVD 88).
- Depths shown are below LWRP2014 SURFACE  
 Red solid contours are 9' below LWRP2014 SURFACE  
 Green dashed contours are 12' below LWRP2014 SURFACE  
 Blue dashed contours are 14' below LWRP2014 SURFACE