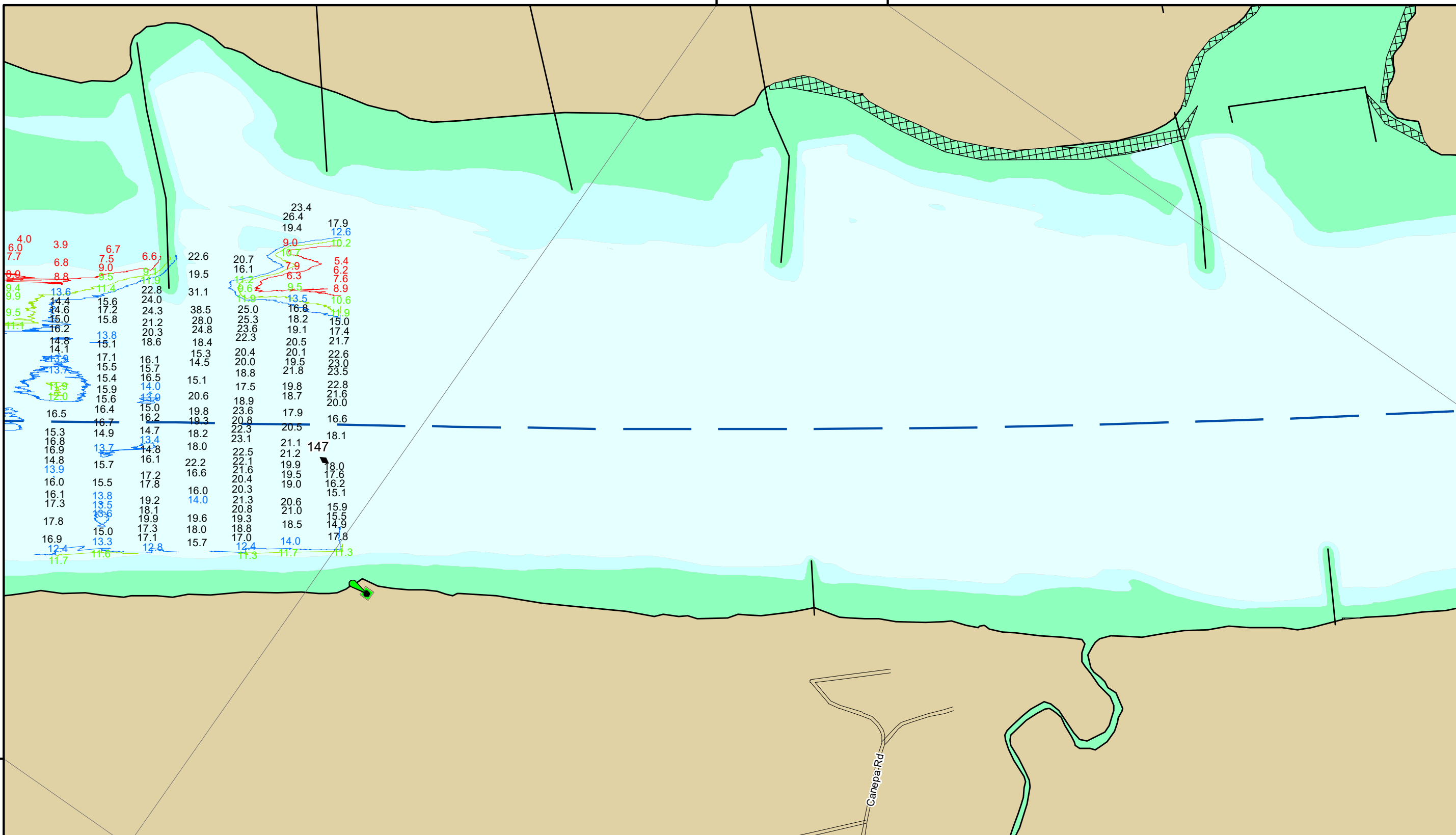


38°11'N 90°20'W

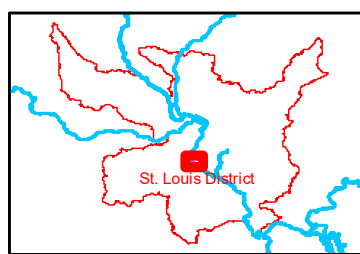
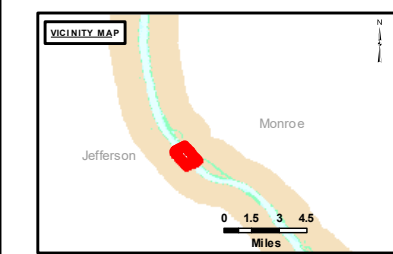


DISCLAIMER: The United States Government furnishes this information for a specific purpose and does not warrant its accuracy or completeness. It is provided as is, with all faults. The user assumes all liability for any errors or omissions in the data. The user also assumes all liability for any damage or loss resulting from the use of this information. The United States Government is not responsible for any damage or loss resulting from the use of this information. The user also assumes all liability for any damage or loss resulting from the use of this information.

U.S. ARMY CORPS OF ENGINEERS ST. LOUIS DISTRICT		
Surveyed By:	Reviewed By:	Checked By:

Survey Information
 PROTOTYPE_REACH_UPPER_MISSISSIPPI
 UM_SL_PRC_20220926_BD_1
 26 September 2022

Reach Number
 9 of 18



LAYERS

- River Mile
- Sailing Line
- 9' below LWRP2014 Surface
- 12' below LWRP2014 Surface
- 14' below LWRP2014 Surface

Depths shown are below LWRP2014 Surface

Aids to Navigation

- Green
- Red
- Junction
- Green Buoy
- Red Buoy
- Training Structure
- Revetment

Scale: 0 250 500 750 1,000 Feet

NOTES:
 Horizontal Coordinate System:
 North American Datum of 1983 (NAD83), projected to the State Plane Coordinate System (SPCS), Missouri East Zone. Distance units in U.S. Survey Feet.
 Vertical Datum:
 Soundings are shown in feet and indicate depths below the 2014 Low Water Reference Plane.
 The information depicted on this map represents the results of a survey conducted on the date indicated and can only be considered to represent the general condition existing at that time.
 The location of navigation aids are based on and provided by the U.S. Coast Guard.

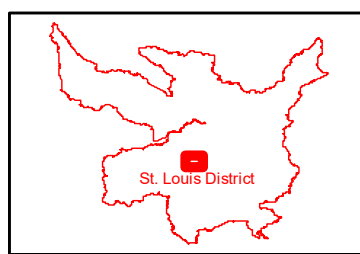
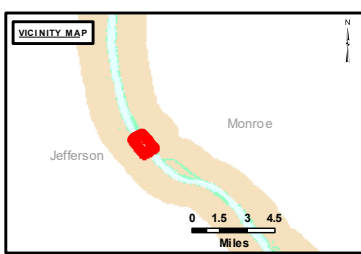
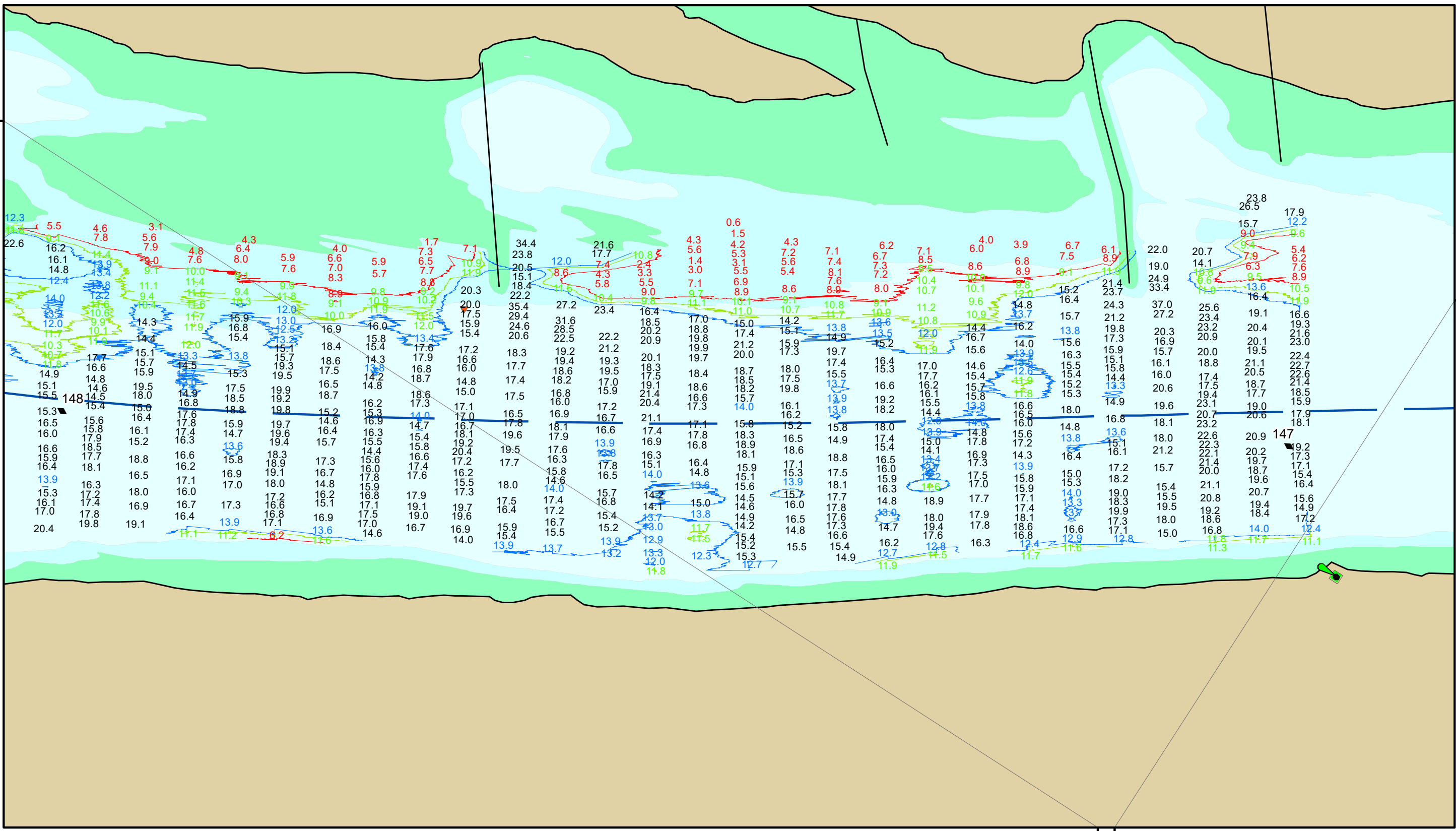


Disclaimer: The United States Government... This map represents the results of a survey conducted on the Mississippi River... The information depicted on this map represents the results of a survey conducted on the date indicated and can only be considered to represent the general condition existing at that time.

Approval table with fields for Surveyed By, Received By, Checked By, and Approved.

Survey Information: PROTOTYPE REACH_UPPER_MISSISSIPPI, UM_SL_PRC_20220926_BD_1, 26 September 2022

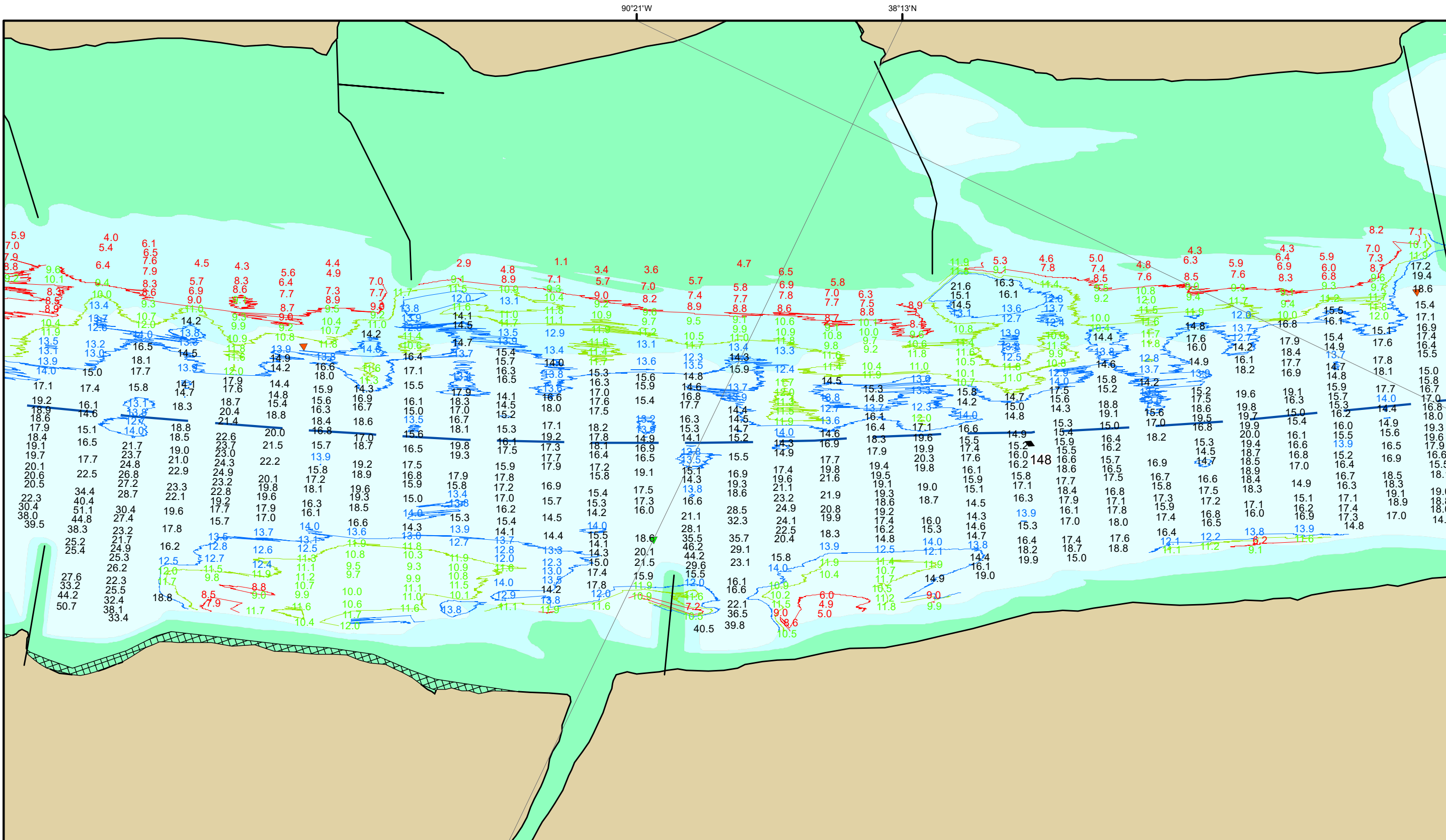
Reach Number 10 of 18



LAYERS legend: River Mile, Sailing Line, 9' below LWRP2014 Surface, 12' below LWRP2014 Surface, 14' below LWRP2014 Surface. Depths shown are below LWRP2014 Surface.

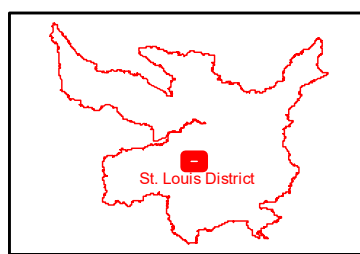
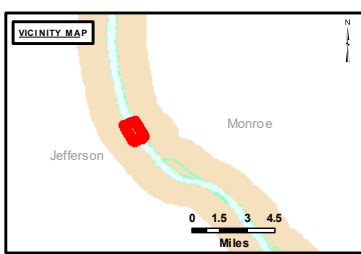
Aids to Navigation legend: Green, Red, Junction, Green Buoy, Red Buoy, Training Structure, Revetment. Includes a compass rose and a scale bar in feet (0 to 1,000).

NOTES: Horizontal Coordinate System: North American Datum of 1983 (NAD83), projected to the State Plane Coordinate System (SPCS), Missouri East Zone. Vertical Datum: Soundings are shown in feet and indicate depths below the 2014 Low Water Reference Plane.



DISCLAIMER: The United States Government furnishes this information for a specific purpose and does not warrant its accuracy, reliability, or completeness. It is provided as a service to the user and is not intended to be used for any other purpose. The user assumes all liability for any use of this information. The United States Government is not responsible for any errors or omissions in this information. This information is not to be used for any purpose other than that for which it was prepared. The user assumes all liability for any use of this information. This information is not to be used for any purpose other than that for which it was prepared. The user assumes all liability for any use of this information.

Surveyed By:	Reviewed By:	Checked By:
Submitted:	Documented:	Approved:



LAYERS

- River Mile
- Sailing Line
- 9' below LWRP2014 Surface
- 12' below LWRP2014 Surface
- 14' below LWRP2014 Surface

Depths shown are below LWRP2014 Surface

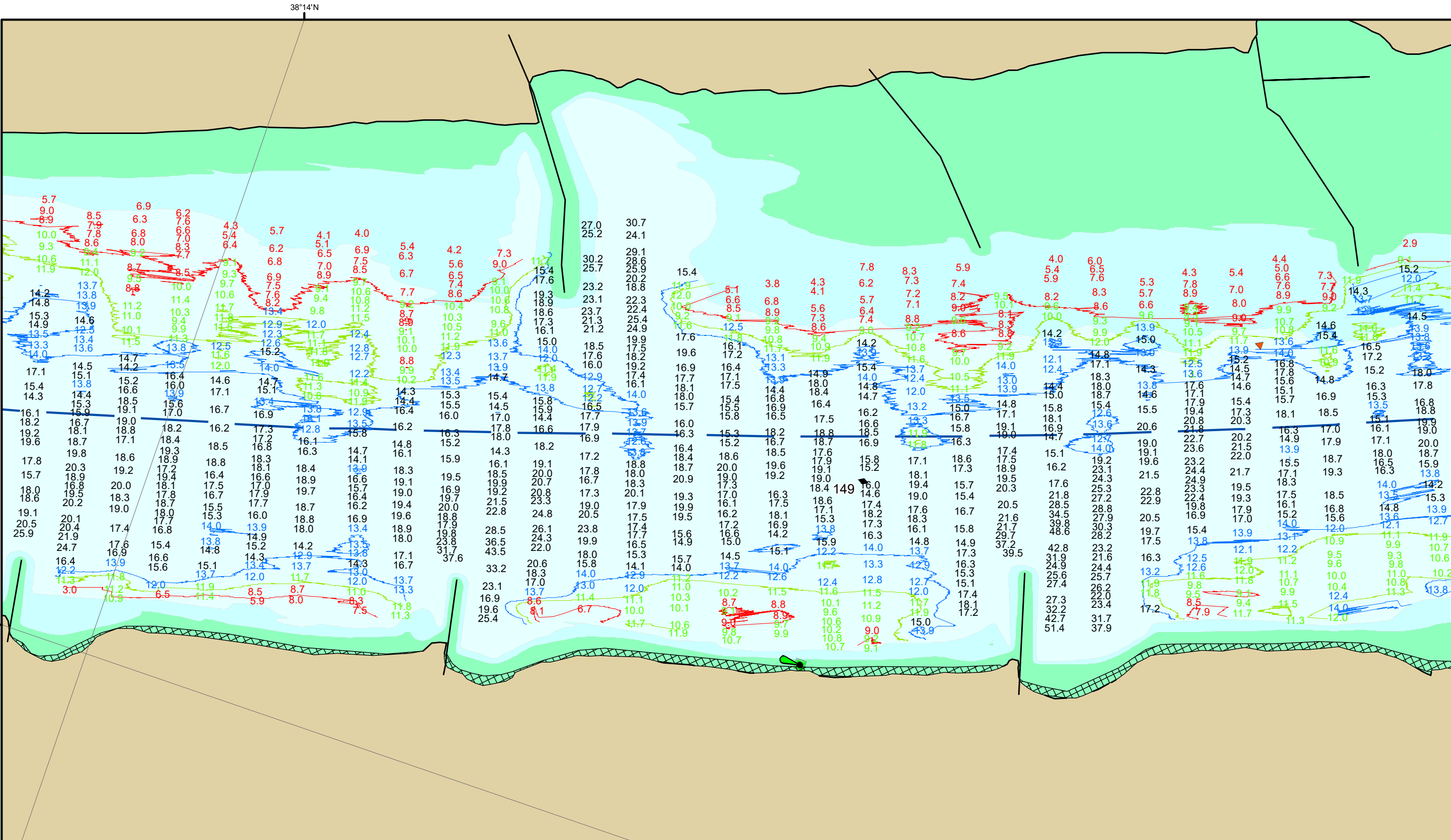
Aids to Navigation

- Green Buoy
- Red Buoy
- Junction
- Training Structure
- Revetment

NOTES:
 Horizontal Coordinate System: North American Datum of 1983 (NAD83), projected to the State Plane Coordinate System (SPCS), Missouri East Zone. Distance units in U.S. Survey Feet.
 Vertical Datum: Soundings are shown in feet and indicate depths below the 2014 Low Water Reference Plane.
 The information depicted on this map represents the results of a survey conducted on the date indicated and can only be considered to represent the general condition existing at that time.
 The location of navigation aids are based on and provided by the U.S. Coast Guard.

Survey Information
 PROTOTYPE_REACH_UPPER_MISSISSIPPI
 UM_SL_PRC_20220926_BD_1
 26 September 2022

Reach Number
 11 of 18

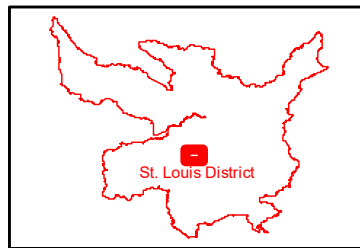
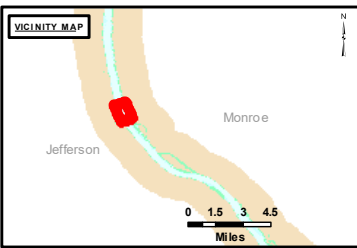


90°22'W

38°14'N

38°14'N

90°22'W



LAYERS

- ◆ River Mile
- Sailing Line
- 9' below LWRP2014 Surface
- 12' below LWRP2014 Surface
- 14' below LWRP2014 Surface

Depths shown are below LWRP2014 Surface

Aids to Navigation

- Green
- Red
- Junction
- ▲ Green Buoy
- ▲ Red Buoy
- Training Structure
- ▣ Revetment

NOTES:
 Horizontal Coordinate System:
 North American Datum of 1983 (NAD83), projected to the State Plane Coordinate System (SPCS), Missouri East Zone. Distance units in U.S. Survey Feet.

Vertical Datum:
 Soundings are shown in feet and indicate depths below the 2014 Low Water Reference Plane.

The information depicted on this map represents the results of a survey conducted on the date indicated and can only be considered to represent the general condition existing at that time.

The location of navigation aids are based on and provided by the U.S. Coast Guard.

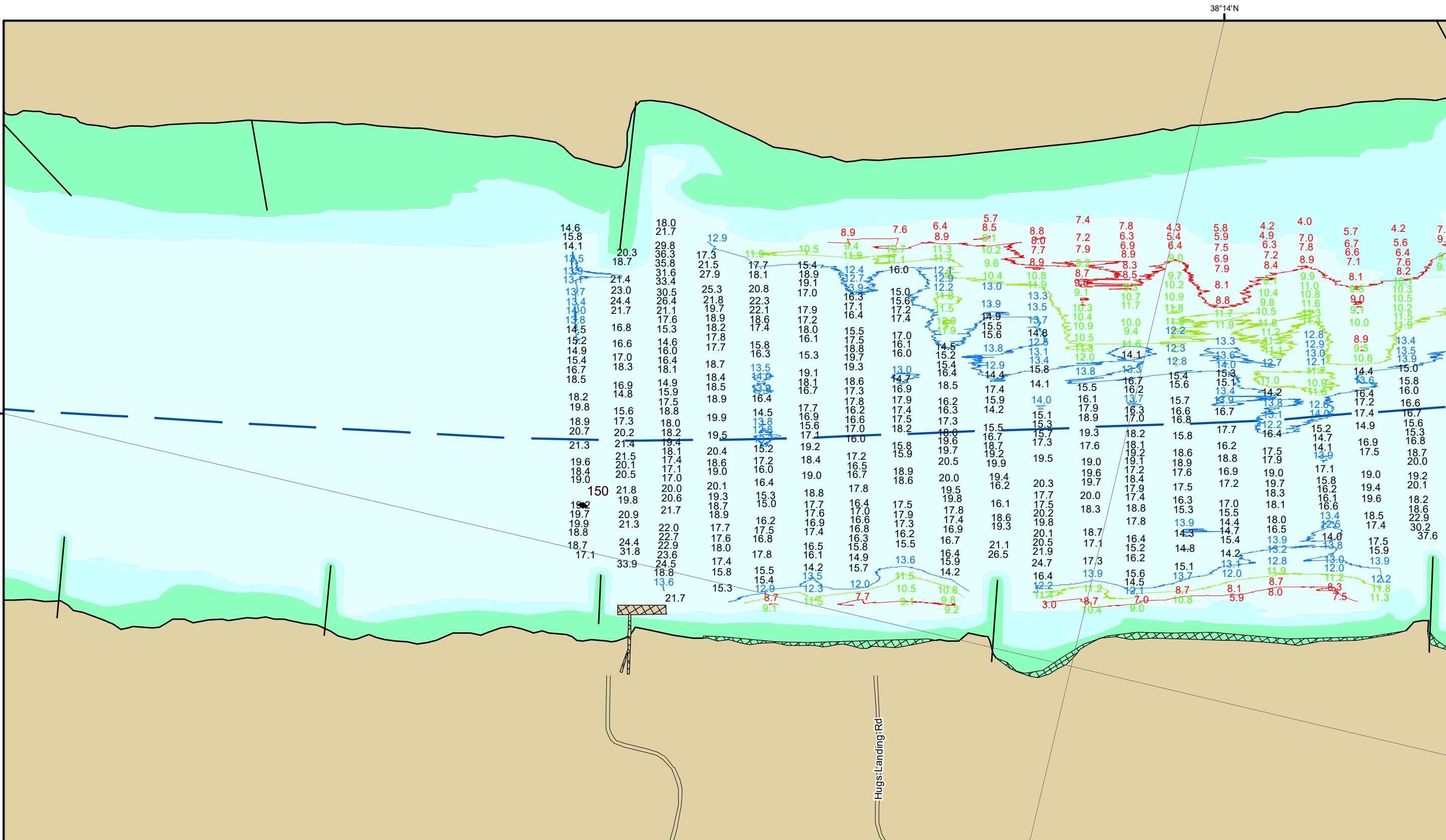


DISCLAIMER: The United States Government furnishes this information for a specific purpose and does not warrant its accuracy, completeness, or timeliness. The user of this information is advised to verify the accuracy, completeness, and timeliness of the information before relying on it for any purpose. The user of this information is advised to verify the accuracy, completeness, and timeliness of the information before relying on it for any purpose. The user of this information is advised to verify the accuracy, completeness, and timeliness of the information before relying on it for any purpose.

Surveyed By:	Reviewed By:	Checked By:

Survey Information
 PROTOTYPE_REACH_UPPER_MISSISSIPPI
 UM_SL_PRC_20220926_BD_1
 26 September 2022

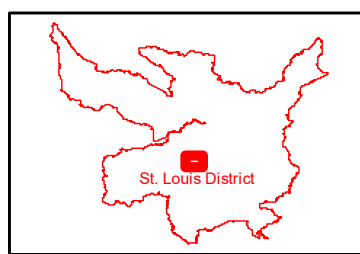
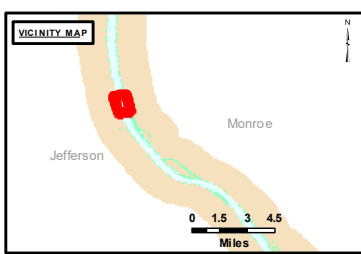
Reach Number
 12 of 18



DISCLAIMER: The United States Government furnishes this information for a specific purpose and does not warrant its accuracy, completeness, or timeliness. The United States Government makes no warranty, express or implied, regarding the accuracy, completeness, or timeliness of the information. The United States Government is not liable for any damages, including consequential damages, arising from the use of this information. The user of this information is advised to verify the accuracy, completeness, and timeliness of the information before using it for any purpose. The United States Government is not responsible for any errors or omissions in this information. The United States Government is not liable for any damages, including consequential damages, arising from the use of this information. The user of this information is advised to verify the accuracy, completeness, and timeliness of the information before using it for any purpose.

Surveyed By:	Reviewed By:	Checked By:
Submitted:	Documented:	Approved:

Survey Information
 PROTOTYPE_REACH_UPPER_MISSISSIPPI
 UM_SL_PRC_20220926_BD_1
 26 September 2022



LAYERS

- River Mile
- Sailing Line
- 9' below LWRP2014 Surface
- 12' below LWRP2014 Surface
- 14' below LWRP2014 Surface

Depths shown are below LWRP2014 Surface

Aids to Navigation

- Green Buoy
- Red Buoy
- Junction
- Training Structure
- Revetment

NOTES:
 Horizontal Coordinate System:
 North American Datum of 1983 (NAD83), projected to the State Plane Coordinate System (SPCS), Missouri East Zone. Distance units in U.S. Survey Feet.
 Vertical Datum:
 Soundings are shown in feet and indicate depths below the 2014 Low Water Reference Plane.
 The information depicted on this map represents the results of a survey conducted on the date indicated and can only be considered to represent the general condition existing at that time.
 The location of navigation aids are based on and provided by the U.S. Coast Guard.

Reach Number
 13 of 18