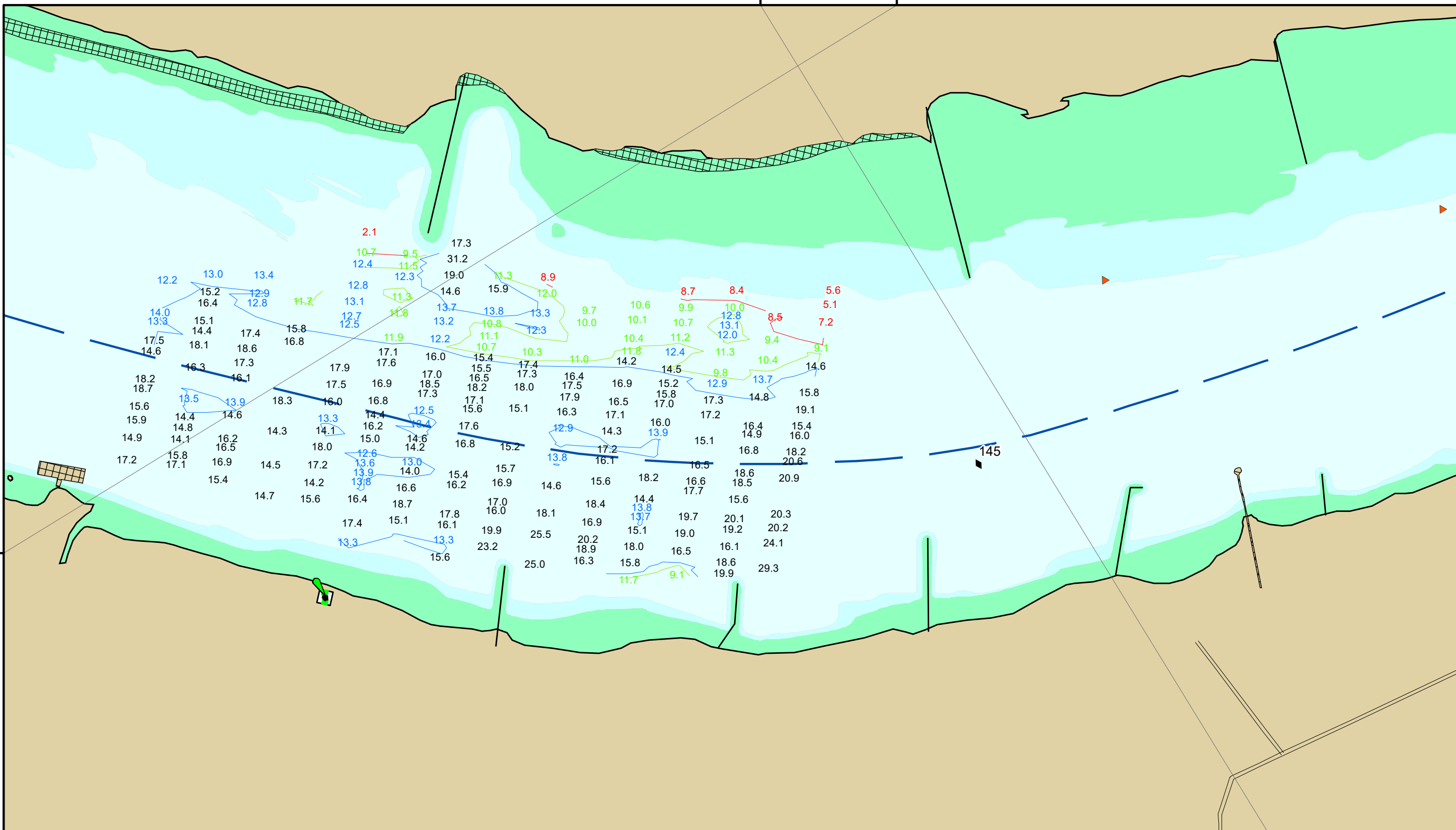


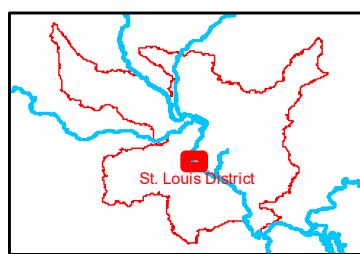
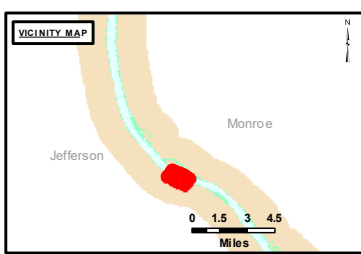
90°19'W 38°11'N



DISCLAIMER: The United States Government furnishes this information for a specific purpose and does not warrant its accuracy or completeness. It is provided as a service to the user and is not to be used for any other purpose. The user assumes all responsibility for the use of this information. The United States Government makes no warranty, express or implied, for the accuracy or completeness of the information furnished. This information is provided for informational purposes only and is not to be used for any other purpose. The user assumes all responsibility for the use of this information. The United States Government makes no warranty, express or implied, for the accuracy or completeness of the information furnished. This information is provided for informational purposes only and is not to be used for any other purpose. The user assumes all responsibility for the use of this information.

U.S. ARMY CORPS OF ENGINEERS ST. LOUIS DISTRICT		
Surveyed By:	Reviewed By:	Checked By:
Submitted:	Documented:	Approved:

Survey Information
 PROTOTYPE_REACH_UPPER_MISSISSIPPI
 UM_SL_PRC_20221202_AD_1
 02 December 2022



LAYERS

- ◆ River Mile
- Sailing Line
- 9' below LWRP2014 Surface
- 12' below LWRP2014 Surface
- 14' below LWRP2014 Surface

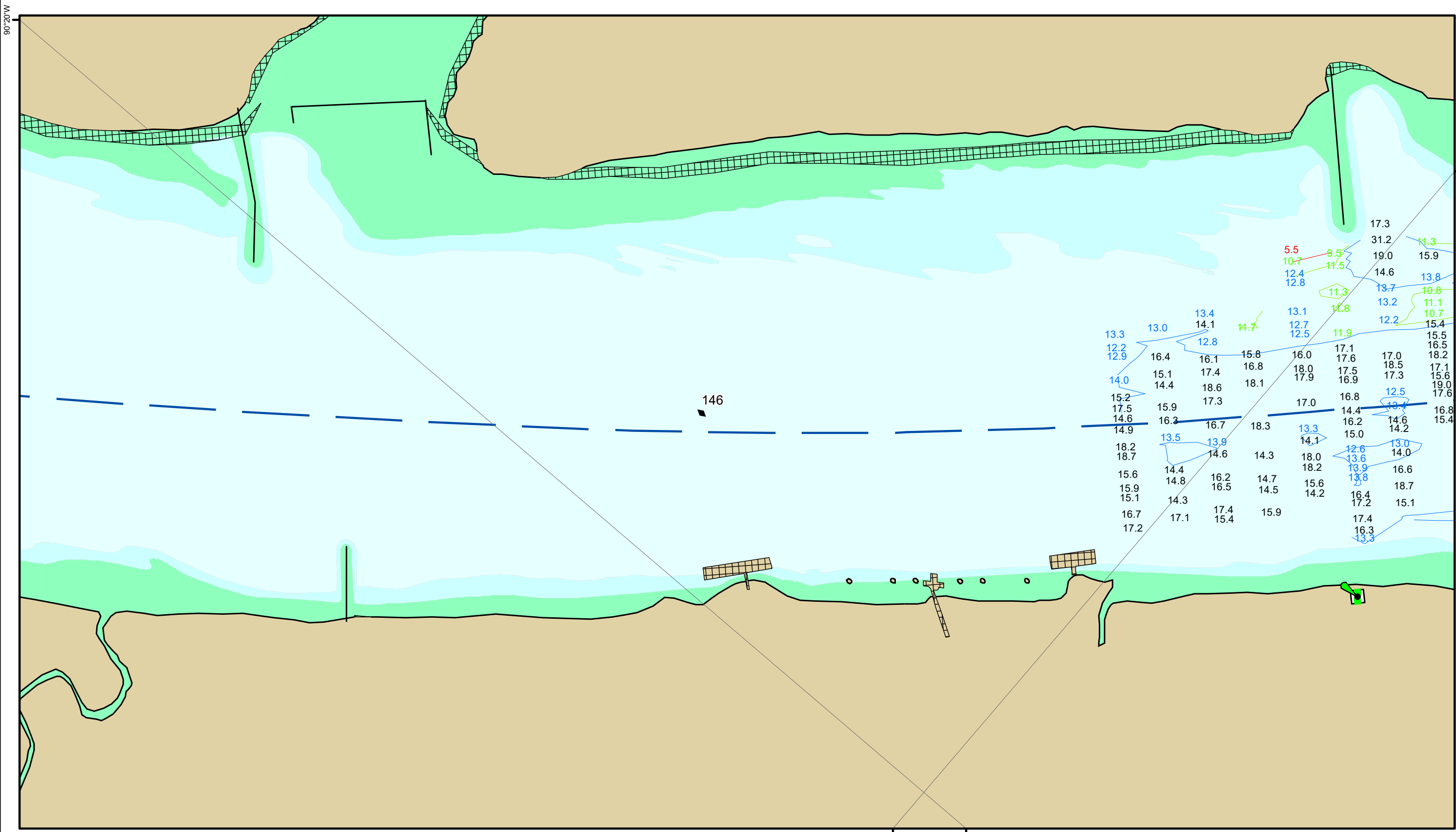
Depths shown are below LWRP2014 Surface

Aids to Navigation

- Green
- Red
- Junction
- ▲ Green Buoy
- ▲ Red Buoy
- Training Structure
- ▨ Revetment

NOTES:
 Horizontal Coordinate System:
 North American Datum of 1983 (NAD83), projected to the State Plane Coordinate System (SPCS), Missouri East Zone. Distance units in U.S. Survey Feet.
 Vertical Datum:
 Soundings are shown in feet and indicate depths below the 2014 Low Water Reference Plane.
 The information depicted on this map represents the results of a survey conducted on the date indicated and can only be considered to represent the general condition existing at that time.
 The location of navigation aids are based on and provided by the U.S. Coast Guard.

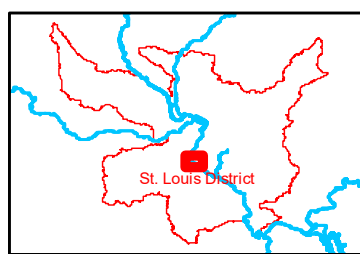
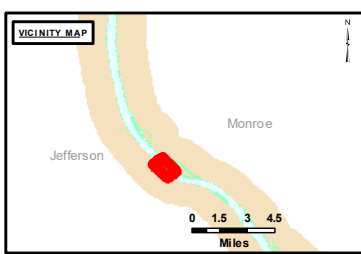
Reach Number
 7 of 18



DISCLAIMER: The United States Government furnishes this information for a specific purpose and does not warrant its accuracy or completeness. It is provided as is, with all faults. The user assumes all liability for any errors or omissions. The user shall indemnify and hold the United States Government harmless from any and all claims, damages, and expenses, including reasonable attorneys' fees, arising from the use of this information, whether or not such claims, damages, and expenses are caused in whole or in part by the negligence of the United States Government. This disclaimer applies to all uses of this information, whether or not such claims, damages, and expenses are caused in whole or in part by the negligence of the United States Government.

Submitted By:	Reviewed By:	Checked By:

Survey Information
 PROTOTYPE_REACH_UPPER_MISSISSIPPI
 UM_SL_PRC_20221202_AD_1
 02 December 2022



LAYERS

- River Mile
- Sailing Line
- 9' below LWRP2014 Surface
- 12' below LWRP2014 Surface
- 14' below LWRP2014 Surface

Depths shown are below LWRP2014 Surface

Aids to Navigation

- Green
- Red
- Junction
- Green Buoy
- Red Buoy
- Training Structure
- Revetment

NOTES:
 Horizontal Coordinate System:
 North American Datum of 1983 (NAD83), projected to the State Plane Coordinate System (SPCS), Missouri East Zone. Distance units in U.S. Survey Feet.
 Vertical Datum:
 Soundings are shown in feet and indicate depths below the 2014 Low Water Reference Plane.
 The information depicted on this map represents the results of a survey conducted on the date indicated and can only be considered to represent the general condition existing at that time.
 The location of navigation aids are based on and provided by the U.S. Coast Guard.

Reach Number
 8 of 18