



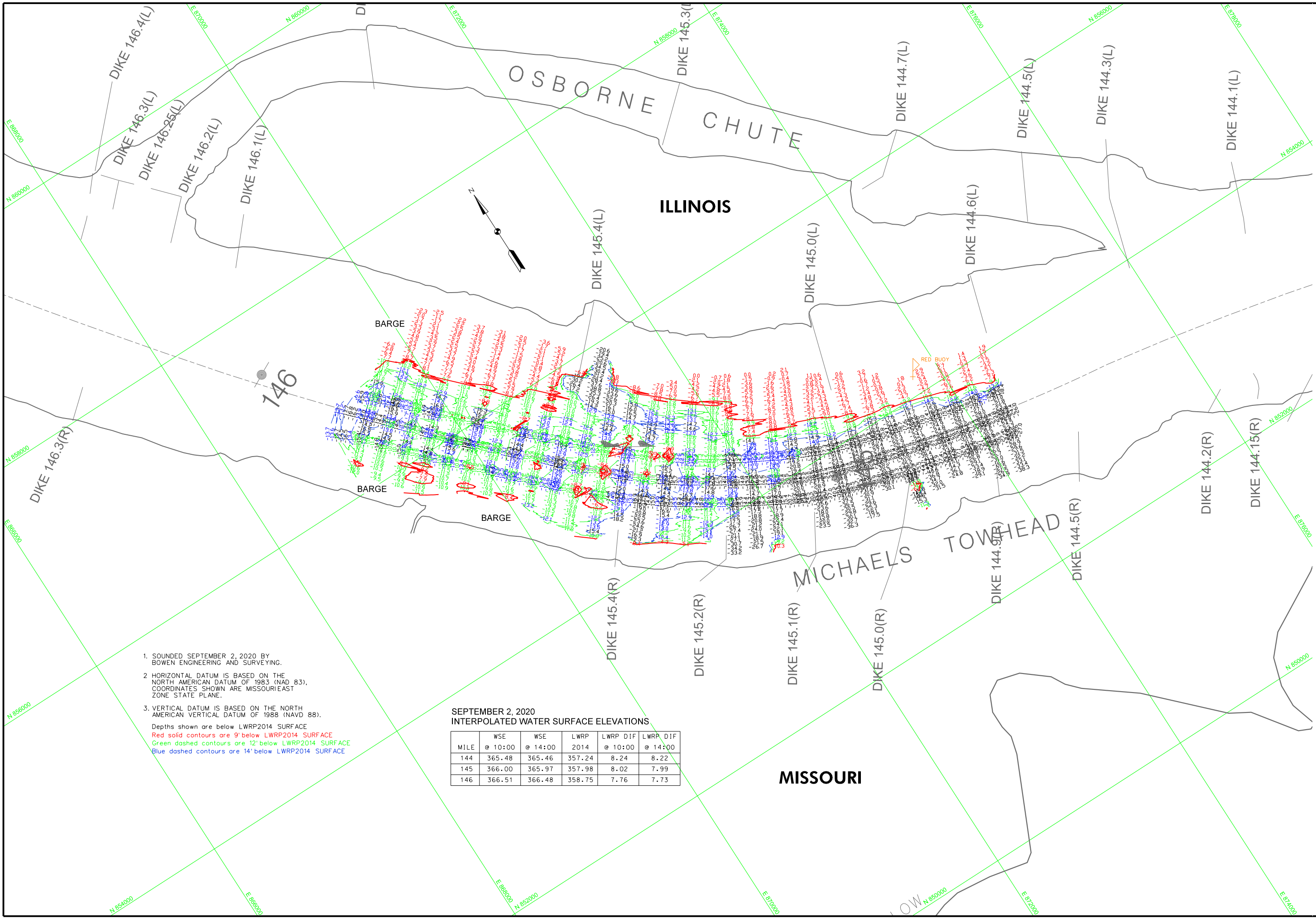
US Army Corps of Engineers  
St. Louis District

ST. LOUIS, MO	ST. LOUIS, MO	JEFFERSON BARRACKS (BRICKEY'S LANDING, MO)	CHESTER ILL
ZERO N.A.V.D.	379.58	377.34	340.73
MILE	180.0	188.70	199.9
LWRP 2014	376.38	369.63	340.33
02 SEP 2020	4.45(800) 3.50(1400)	X	UNAVAILABLE
			7.8(800) 7.2(1400)

U.S. ARMY ENGINEER DIVISION CORPS OF ENGINEERS ST. LOUIS, MISSOURI	U.S. ARMY ENGINEER DIVISION CORPS OF ENGINEERS ST. LOUIS, MISSOURI	U.S. ARMY ENGINEER DIVISION CORPS OF ENGINEERS ST. LOUIS, MISSOURI	U.S. ARMY ENGINEER DIVISION CORPS OF ENGINEERS ST. LOUIS, MISSOURI
UPPER MISSISSIPPI RIVER BASIN	UPPER MISSISSIPPI RIVER BASIN	UPPER MISSISSIPPI RIVER BASIN	UPPER MISSISSIPPI RIVER BASIN
MISSISSIPPI RIVER	MISSISSIPPI RIVER	MISSISSIPPI RIVER	MISSISSIPPI RIVER
Drawn by: Bowen Engineering	Reviewed by: Bowen Engineering	Checked by: Bowen Engineering	Approved by: Bowen Engineering
Submitted: Bowen Engineering	Submitted: Bowen Engineering	Submitted: Bowen Engineering	Submitted: Bowen Engineering
File name: Bowen Engineering	File name: Bowen Engineering	File name: Bowen Engineering	File name: Bowen Engineering

PRE DREDGE SURVEY
RIVER MILES 145.8 - 144.8
Scale: 1" = 240 METERS
Scale: 1" = 800 FEET
THE INFORMATION DEPICTED ON THIS MAP REPRESENTS THE RESULTS OF A SURVEY CONDUCTED UNDER THE GENERAL CONDITIONS SPECIFIED IN THE GENERAL CONDITIONS OF CONTRACT.

PLATE NUMBER  
XX  
SHEET 1 OF 1



1. SOUNDED SEPTEMBER 2, 2020 BY BOWEN ENGINEERING AND SURVEYING.
2. HORIZONTAL DATUM IS BASED ON THE NORTH AMERICAN DATUM OF 1983 (NAD 83), COORDINATES SHOWN ARE MISSOURI/EAST ZONE STATE PLANE.
3. VERTICAL DATUM IS BASED ON THE NORTH AMERICAN VERTICAL DATUM OF 1988 (NAVD 88).  
Depths shown are below LWRP2014 SURFACE  
Red solid contours are 9' below LWRP2014 SURFACE  
Green dashed contours are 12' below LWRP2014 SURFACE  
Blue dashed contours are 14' below LWRP2014 SURFACE

SEPTEMBER 2, 2020  
INTERPOLATED WATER SURFACE ELEVATIONS

MILE	WSE @ 10:00	WSE @ 14:00	LWRP 2014	LWRP DIF @ 10:00	LWRP DIF @ 14:00
144	365.48	365.46	357.24	8.24	8.22
145	366.00	365.97	357.98	8.02	7.99
146	366.51	366.48	358.75	7.76	7.73