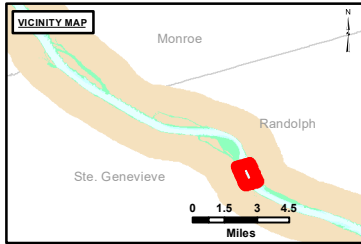


DISCLAIMER: The data represents the results of data collection for a specific US Army Corps of Engineers project. It is not intended to be used for any other purpose. The US Government makes no warranty, express or implied, concerning the accuracy, completeness, or timeliness of the data. The user shall be responsible for the interpretation and use of the data. The US Government shall not be liable for any damages, including consequential damages, arising from the use of the data. The user shall be responsible for obtaining any necessary permissions from the appropriate authorities before using the data for any purpose other than that for which it was originally intended.

U.S. ARMY CORPS OF ENGINEERS ST. LOUIS DISTRICT		
Surveyed By:	Revised By:	Checked By:

Survey Information
 FORT_CHARTRES_UPPER_MISSISSIPPI
 UM_SL_FCC_20230622_BD_2
 22 June 2023



LAYERS

- ◆ River Mile
- Sailing Line
- 9' below LWRP2014 Surface
- 12' below LWRP2014 Surface
- 14' below LWRP2014 Surface

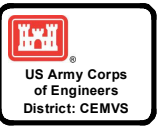
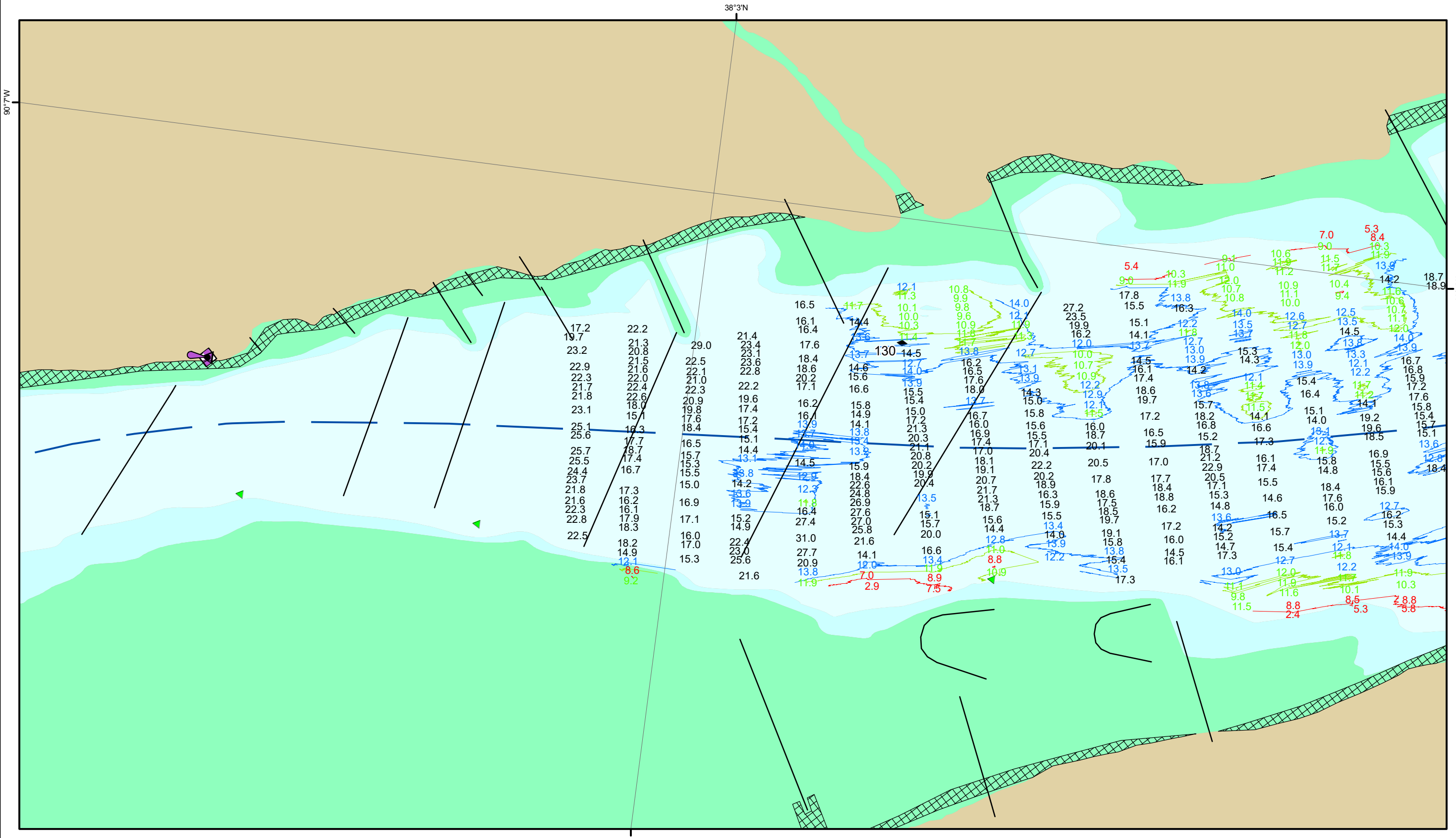
Depths shown are below LWRP2014 Surface

Aids to Navigation

- Green
- Red
- ⚓ Junction
- ▲ Green Buoy
- ▲ Red Buoy
- Training Structure
- ▨ Revetment

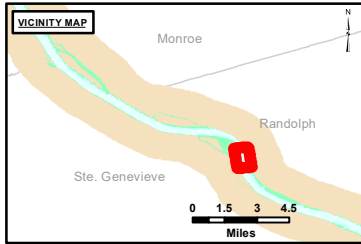
NOTES:
 Horizontal Coordinate System: North American Datum of 1983 (NAD83), projected to the State Plane Coordinate System (SPCS), Missouri East Zone. Distance units in U.S. Survey Feet.
 Vertical Datum: Soundings are shown in feet and indicate depths below the 2014 Low Water Reference Plane.
 The information depicted on this map represents the results of a survey conducted on the date indicated and can only be considered to represent the general condition existing at that time.
 The location of navigation aids are based on and provided by the U.S. Coast Guard.

Reach Number
 6 of 20



Distribution Liability: The data represents the results of data collection for a specific US Army Corps of Engineers project. It is not intended for use in any other project. The user assumes all liability for any use of the data for purposes other than those intended by the US Army Corps of Engineers. The US Army Corps of Engineers makes no warranty, expressed or implied, concerning the accuracy, completeness, or timeliness of the data furnished. The United States shall be liable for damages only for negligence of the Government. There shall be no liability for consequential or special damages. The user shall be held harmless by the Government for any use of the data for purposes other than those intended by the US Army Corps of Engineers.

Surveyed By:	Revised By:	Checked By:



LAYERS

- River Mile
- Sailing Line
- 9' below LWRP2014 Surface
- 12' below LWRP2014 Surface
- 14' below LWRP2014 Surface

Depths shown are below LWRP2014 Surface

Aids to Navigation

- Green
- Red
- Junction
- Green Buoy
- Red Buoy
- Training Structure
- Revetment

NOTES:
 Horizontal Coordinate System: North American Datum of 1983 (NAD83), projected to the State Plane Coordinate System (SPCS), Missouri East Zone. Distance units in U.S. Survey Feet.
 Vertical Datum: Soundings are shown in feet and indicate depths below the 2014 Low Water Reference Plane.
 The information depicted on this map represents the results of a survey conducted on the date indicated and can only be considered to represent the general condition existing at that time.
 The location of navigation aids are based on and provided by the U.S. Coast Guard.

Survey Information
 FORT_CHARTRES_UPPER_MISSISSIPPI
 UM_SL_FCC_20230622_BD_2
 22 June 2023

Reach Number
 7 of 20