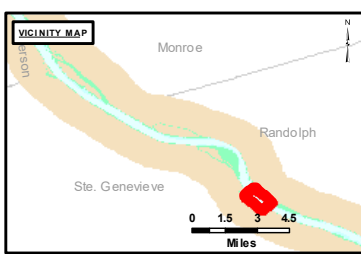


DISCLAIMER: The data represents the results of field observations for a specific US Army Corps of Engineers project. The data is not intended to be used for any other purpose. The data is not intended to be used for any other purpose. The data is not intended to be used for any other purpose.

U.S. ARMY CORPS OF ENGINEERS ST. LOUIS DISTRICT		
Submitted By:	Reviewed By:	Checked By:

Survey Information
 FORT_CHARTRES_UPPER_MISSISSIPPI
 UM_SL_FCC_20221003_BD_2
 03 October 2022



LAYERS

- River Mile
- Sailing Line
- 9' below LWRP2014 Surface
- 12' below LWRP2014 Surface
- 14' below LWRP2014 Surface

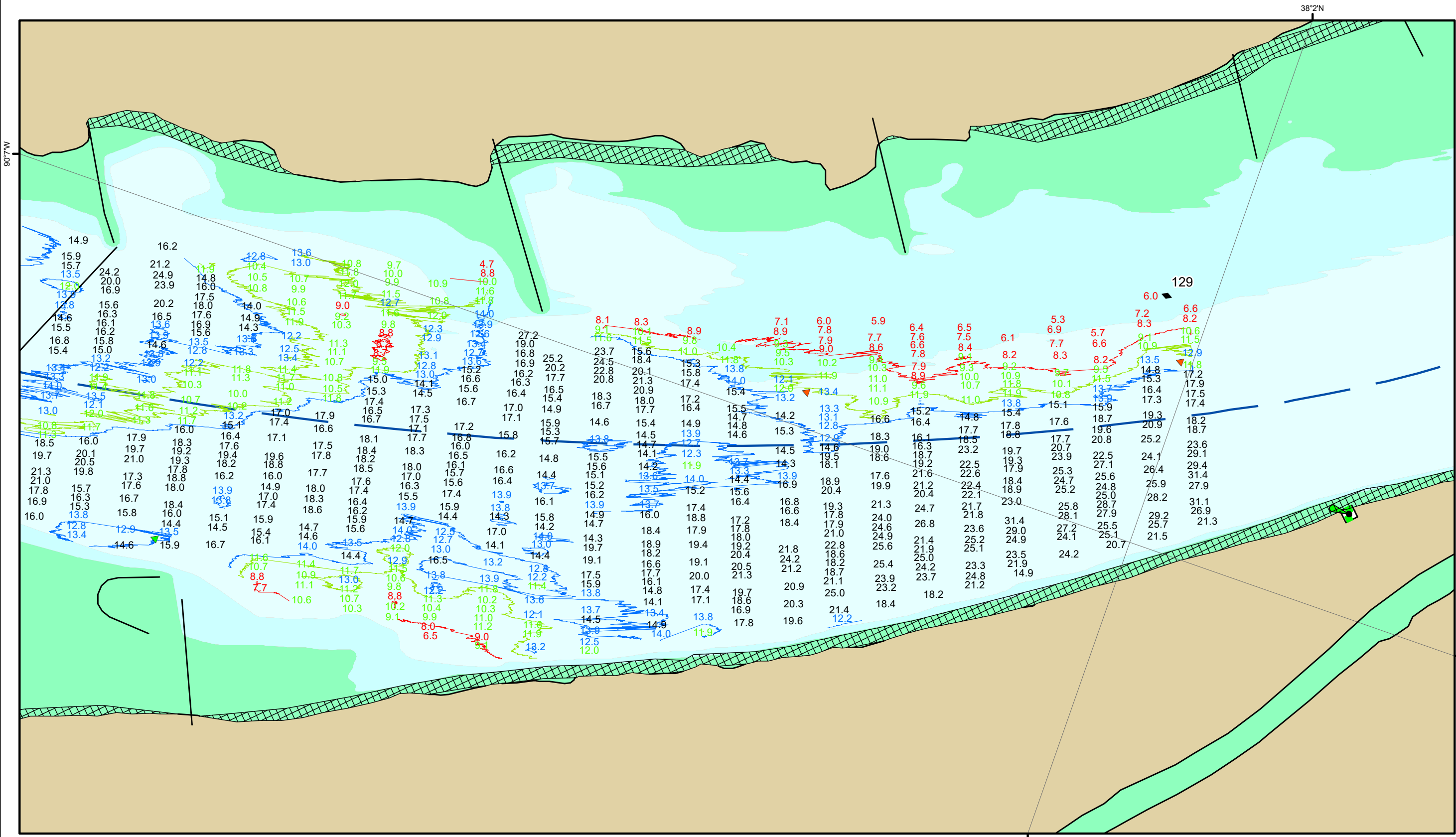
Depths shown are below LWRP2014 Surface

Aids to Navigation

- Green
- Red
- Junction
- Green Buoy
- Red Buoy
- Training Structure
- Revetment

NOTES:
 Horizontal Coordinate System:
 North American Datum of 1983 (NAD83), projected to the State Plane Coordinate System (SPCS), Missouri East Zone. Distance units in U.S. Survey Feet.
 Vertical Datum:
 Soundings are shown in feet and indicate depths below the 2014 Low Water Reference Plane.
 The information depicted on this map represents the results of a survey conducted on the date indicated and can only be considered to represent the general condition existing at that time.
 The location of navigation aids are based on and provided by the U.S. Coast Guard.

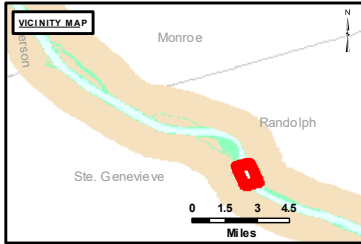
Reach Number
 5 of 20



DISCLAIMER: The United States Government furnishes this information for a specific purpose and does not warrant its accuracy, reliability, or completeness. It is provided as a service to the user and is not intended to be used for any other purpose. The user assumes all responsibility for the use of this information. The United States Government is not liable for any damages, including consequential, arising from the use of this information. This information is provided as a service to the user and is not intended to be used for any other purpose. The user assumes all responsibility for the use of this information. This information is provided as a service to the user and is not intended to be used for any other purpose. The user assumes all responsibility for the use of this information.

Surveyed By:	
Reviewed By:	
Checked By:	
Submitted:	
Documented:	
Approved:	

Survey Information
 FORT_CHARTRES_UPPER_MISSISSIPPI
 UM_SL_FCC_20221003_BD_2
 03 October 2022



LAYERS

- ◆ River Mile
- Sailing Line
- 9' below LWRP2014 Surface
- 12' below LWRP2014 Surface
- 14' below LWRP2014 Surface

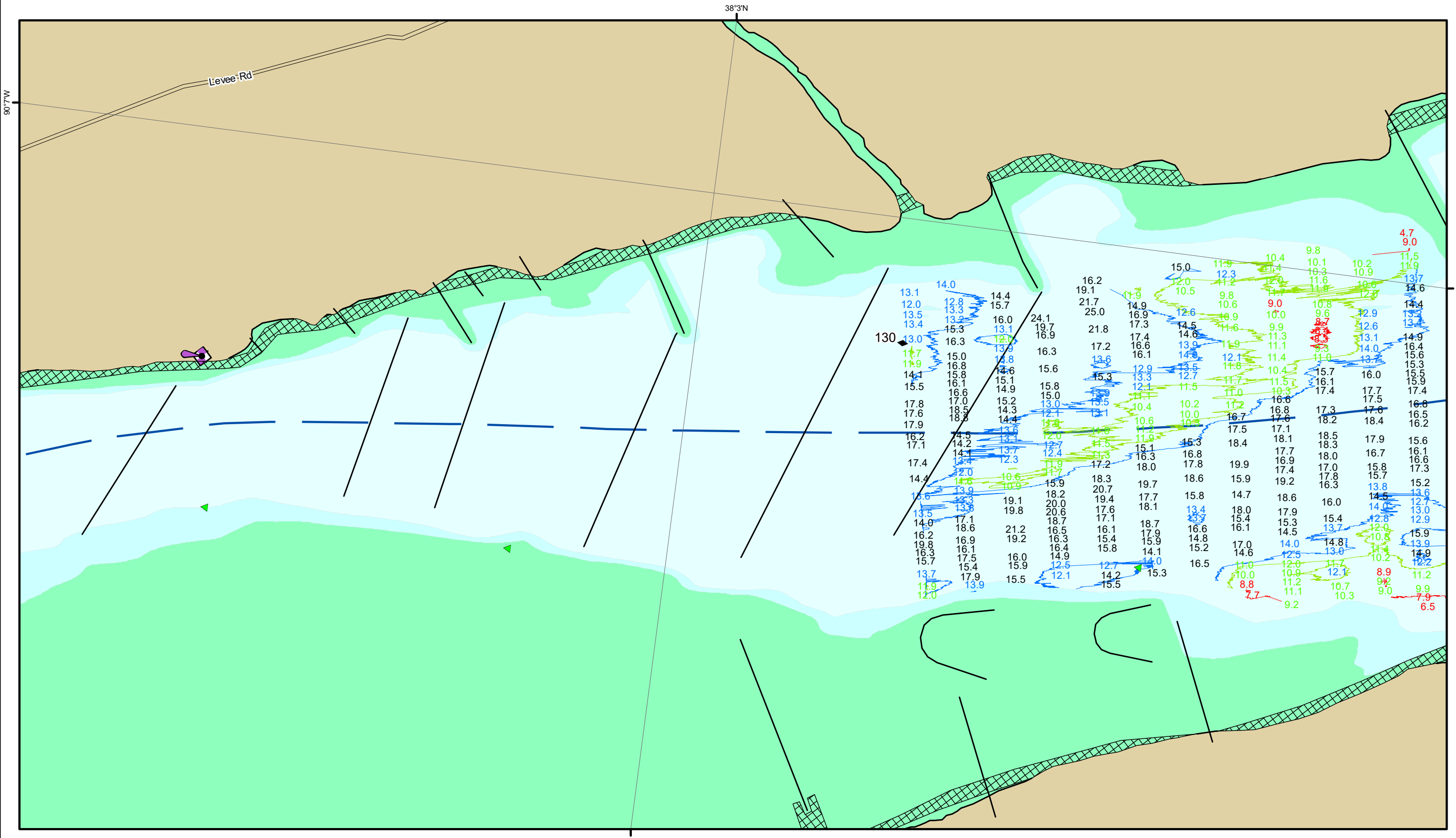
Depths shown are below LWRP2014 Surface

Aids to Navigation

- Green
- Red
- Junction
- ▲ Green Buoy
- ▲ Red Buoy
- Training Structure
- ▣ Revetment

Feet
0 250 500 750 1,000

NOTES:
 Horizontal Coordinate System:
 North American Datum of 1983 (NAD83), projected to the State Plane Coordinate System (SPCS), Missouri East Zone. Distance units in U.S. Survey Feet.
 Vertical Datum:
 Soundings are shown in feet and indicate depths below the 2014 Low Water Reference Plane.
 The information depicted on this map represents the results of a survey conducted on the date indicated and can only be considered to represent the general condition existing at that time.
 The location of navigation aids are based on and provided by the U.S. Coast Guard.

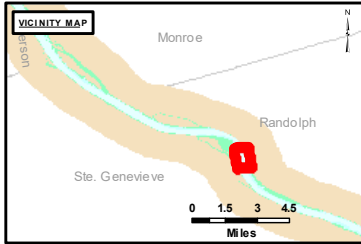


DISCLAIMER: The data represented by the results of this survey are not to be used for navigation purposes. The data are provided for informational purposes only. The user assumes all responsibility for the accuracy or use of the data. The user is advised to consult the appropriate authorities for the most current information. The data are not to be used for any purpose other than that for which they were collected. The user is advised to consult the appropriate authorities for the most current information. The data are not to be used for any purpose other than that for which they were collected. The user is advised to consult the appropriate authorities for the most current information.

U.S. ARMY CORPS OF ENGINEERS ST. LOUIS DISTRICT	
Surveyed By:	Checked By:
Drawn By:	Approved:
Submitted:	

Survey Information
 FORT_CHARTRES_UPPER_MISSISSIPPI
 UM_SL_FCC_20221003_BD_2
 03 October 2022

Reach Number
 7 of 20



LAYERS

- River Mile
- Sailing Line
- 9' below LWRP2014 Surface
- 12' below LWRP2014 Surface
- 14' below LWRP2014 Surface

Depths shown are below LWRP2014 Surface

Aids to Navigation

- Green
- Red
- Junction
- Green Buoy
- Red Buoy
- Training Structure
- Revetment

Feet

0 250 500 750 1,000

NOTES:
 Horizontal Coordinate System:
 North American Datum of 1983 (NAD83), projected to the State Plane Coordinate System (SPCS), Missouri East Zone. Distance units in U.S. Survey Feet.
 Vertical Datum:
 Soundings are shown in feet and indicate depths below the 2014 Low Water Reference Plane.
 The information depicted on this map represents the results of a survey conducted on the date indicated and can only be considered to represent the general condition existing at that time.
 The location of navigation aids are based on and provided by the U.S. Coast Guard.