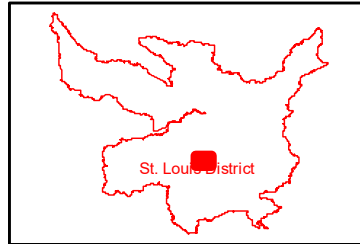
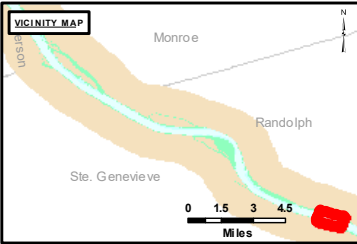


**DISCLAIMER:** The United States Government furnishes this information for a specific purpose and does not warrant its accuracy or completeness. It is provided as a service to the user and is not to be used for any other purpose. The user assumes all liability for any errors or omissions. This information is not to be used for any purpose other than that for which it was prepared. The user assumes all liability for any errors or omissions. This information is not to be used for any purpose other than that for which it was prepared. The user assumes all liability for any errors or omissions.

Surveyed By:	Checked By:
Submitted:	Approved:
Documented:	

**Survey Information**  
 FORT\_CHARTRES\_UPPER\_MISSISSIPPI  
 UM\_SL\_FCC\_20221003\_BD\_1  
 03 October 2022



**LAYERS**

- River Mile
- Sailing Line
- 9' below LWRP2014 Surface
- 12' below LWRP2014 Surface
- 14' below LWRP2014 Surface

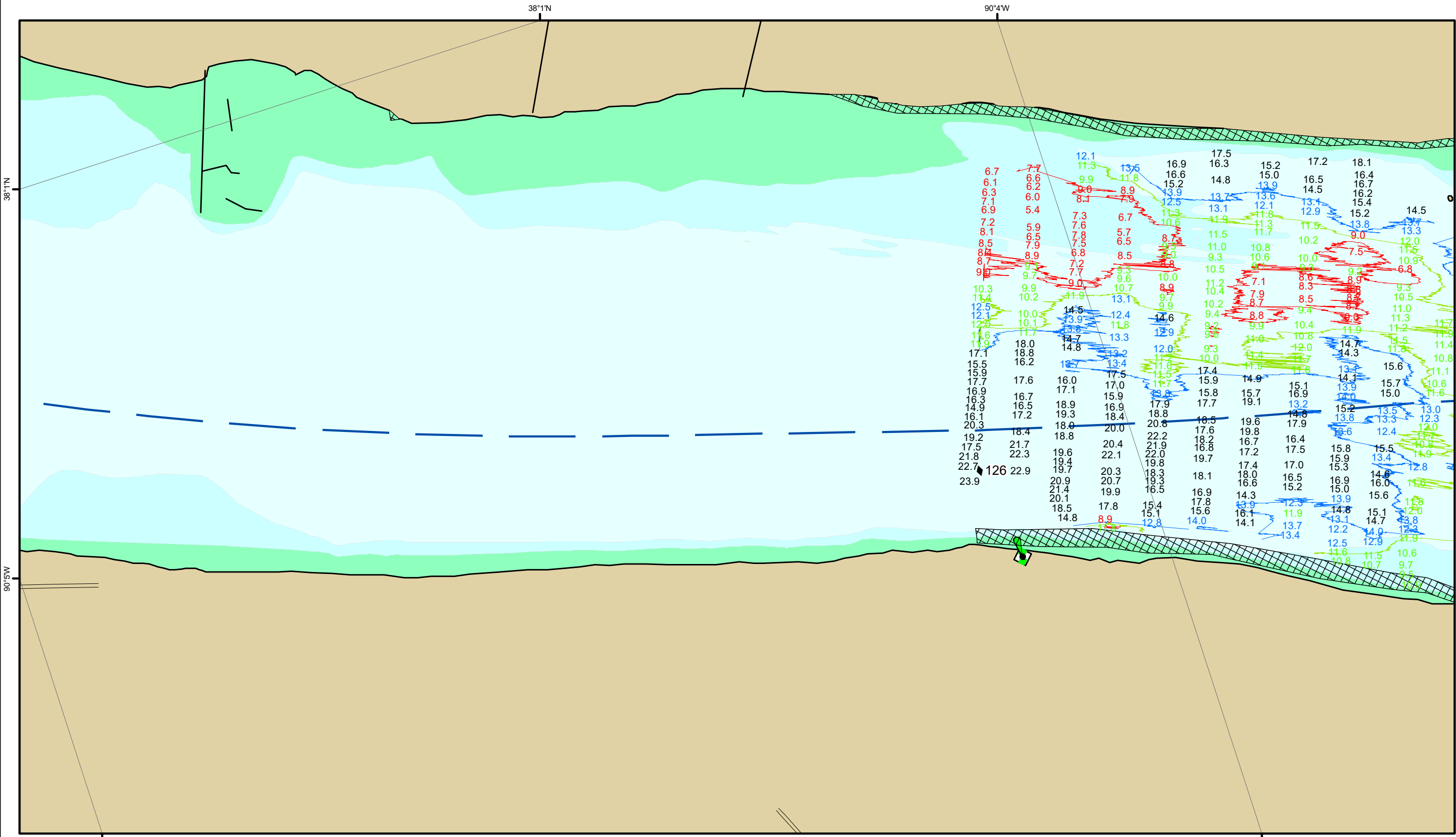
Depths shown are below LWRP2014 Surface

**Aids to Navigation**

- Green Buoy
- Red Buoy
- Junction
- Training Structure
- Retractions

**NOTES:**  
 Horizontal Coordinate System: North American Datum of 1983 (NAD83), projected to the State Plane Coordinate System (SPCS), Missouri East Zone. Distance units in U.S. Survey Feet.  
 Vertical Datum: Soundings are shown in feet and indicate depths below the 2014 Low Water Reference Plane.  
 The information depicted on this map represents the results of a survey conducted on the date indicated and can only be considered to represent the general condition existing at that time.  
 The location of navigation aids are based on and provided by the U.S. Coast Guard.

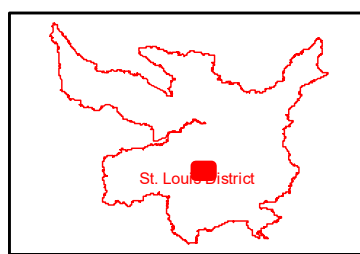
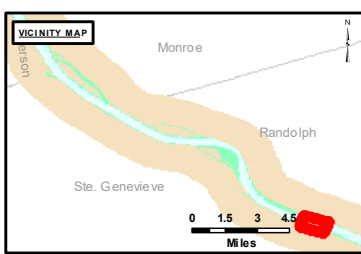
**Reach Number**  
 1 of 20



**DISCLAIMER:** The United States Government furnishes this information for the general information of the public and does not warrant or make any representation as to the accuracy or completeness of the information furnished herein. The information is provided for informational purposes only and is not intended for use in any legal proceeding. The user assumes all responsibility for the use of the information. The United States Government shall not be liable for any damages, including consequential damages, arising from the use of the information. The information is provided on an "as is" basis and the user assumes all responsibility for the use of the information. The information is provided for informational purposes only and is not intended for use in any legal proceeding. The user assumes all responsibility for the use of the information. The United States Government shall not be liable for any damages, including consequential damages, arising from the use of the information.

Surveyed By:	Reviewed By:	Checked By:
Submitted:	Documented:	Approved:

**Survey Information**  
 FORT\_CHARTRES\_UPPER\_MISSISSIPPI  
 UM\_SL\_FCC\_20221003\_BD\_1  
 03 October 2022



**LAYERS**

- River Mile
- Sailing Line
- 9' below LWRP2014 Surface
- 12' below LWRP2014 Surface
- 14' below LWRP2014 Surface

Depths shown are below LWRP2014 Surface

**Aids to Navigation**

- Green
- Red
- Junction
- Green Buoy
- Red Buoy
- Training Structure
- Revetment

**NOTES:**  
 Horizontal Coordinate System:  
 North American Datum of 1983 (NAD83), projected to the State Plane Coordinate System (SPCS), Missouri East Zone. Distance units in U.S. Survey Feet.  
 Vertical Datum:  
 Soundings are shown in feet and indicate depths below the 2014 Low Water Reference Plane.  
 The information depicted on this map represents the results of a survey conducted on the date indicated and can only be considered to represent the general condition existing at that time.  
 The location of navigation aids are based on and provided by the U.S. Coast Guard.

**Reach Number**  
 2 of 20