

LAYERS

- River Mile
- Sailing Line
- 9' below LWRP2014 Surface
- 12' below LWRP2014 Surface
- 14' below LWRP2014 Surface

Depths shown are below LWRP2014 Surface

Aids to Navigation

- Green
- Red
- Junction
- Green Buoy
- Red Buoy
- Training Structure
- Revetment

Feet

0 250 500 750 1,000

NOTES:
 Horizontal Coordinate System:
 North American Datum of 1983 (NAD83), projected to the
 State Plane Coordinate System (SPCS), Missouri East Zone.
 Distance units in U.S. Survey Feet.

Vertical Datum:
 Soundings are shown in feet and indicate depths below the
 2014 Low Water Reference Plane.

The information depicted on this map represents the results of
 a survey conducted on the date indicated and can only be
 considered to represent the general condition existing at that time.

The location of navigation aids are based on and provided
 by the U.S. Coast Guard.



Distribution Liability: The data represents the results of data collection for a specific US Army Corps of Engineers project. It is not intended for use in any other project. As such, it is only valid for the stated use, current time and location. The user is responsible for the accuracy of the data for any other purpose. The user is responsible for the accuracy of the data for any other purpose.

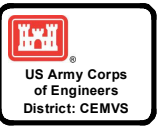
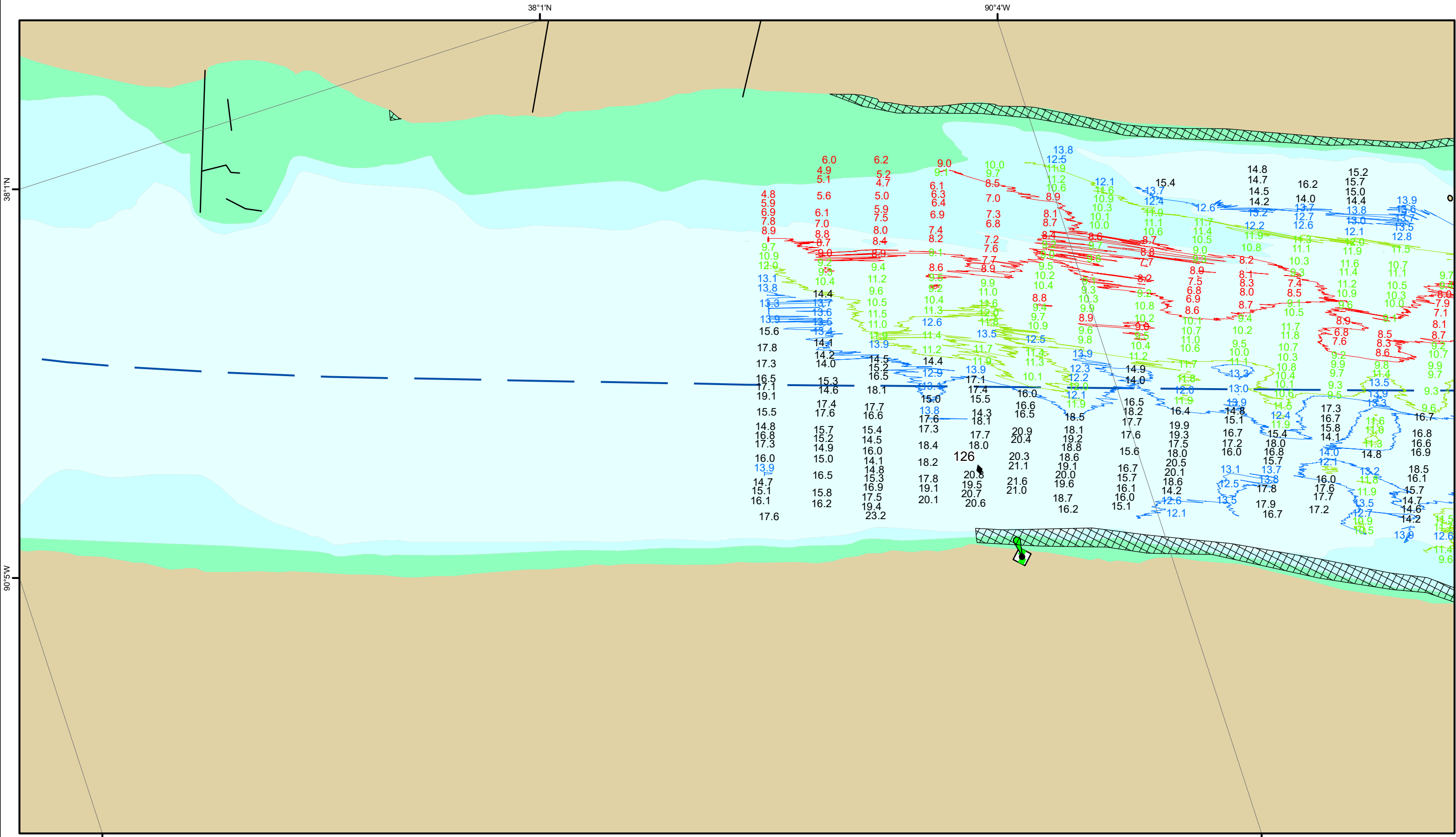
FOUO ABER: This document contains information that is exempt from public release under the Freedom of Information Act (5 U.S.C. 552). This information is for the use of the US Army Corps of Engineers and is not to be disseminated outside the organization. This information is for the use of the US Army Corps of Engineers and is not to be disseminated outside the organization. This information is for the use of the US Army Corps of Engineers and is not to be disseminated outside the organization.

Surveyed By:	Revised By:	Checked By:
Submitted:	Approved:	Agreed:

U.S. ARMY CORPS OF ENGINEERS
ST. LOUIS DISTRICT

Survey Information
 FORT_CHARTRES_UPPER_MISSISSIPPI
 UM_SL_FCC_20230622_BD_1
 22 June 2023

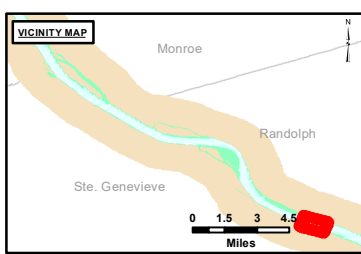
Reach Number
 1 of 20



DISCLAIMER: The United States Government furnishes this information for the general information of the public and does not warrant the accuracy or completeness of the information and the data furnished. This chart is not to be used for navigation purposes. The user of this chart is advised to obtain the most current information from the U.S. Coast Guard. The user of this chart is advised to obtain the most current information from the U.S. Coast Guard. The user of this chart is advised to obtain the most current information from the U.S. Coast Guard.

Surveyed By:	Revised By:	Checked By:

Survey Information
 FORT_CHARTRES_UPPER_MISSISSIPPI
 UM_SL_FCC_20230622_BD_1
 22 June 2023



LAYERS

- River Mile
- Sailing Line
- 9' below LWRP2014 Surface
- 12' below LWRP2014 Surface
- 14' below LWRP2014 Surface

Depths shown are below LWRP2014 Surface

Aids to Navigation

- Green
- Red
- Junction
- Green Buoy
- Red Buoy
- Training Structure
- Revetment

NOTES:
 Horizontal Coordinate System: North American Datum of 1983 (NAD83), projected to the State Plane Coordinate System (SPCS), Missouri East Zone. Distance units in U.S. Survey Feet.
 Vertical Datum: Soundings are shown in feet and indicate depths below the 2014 Low Water Reference Plane.
 The information depicted on this map represents the results of a survey conducted on the date indicated and can only be considered to represent the general condition existing at that time.
 The location of navigation aids are based on and provided by the U.S. Coast Guard.

Reach Number
 2 of 20