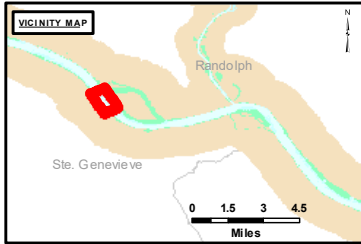


DISCLAIMER: The United States Government furnishes this information for a specific purpose and does not warrant its accuracy or completeness. It is provided as a service to the user and is not to be used for any other purpose. The user assumes all liability for any errors or omissions in the data. The user also assumes all liability for any damage or loss resulting from the use of this information. The user agrees to hold the United States Government harmless from any and all claims, damages, and expenses, including reasonable attorneys' fees, that may be asserted against the United States Government by any third party as a result of the use of this information. This disclaimer applies to all users of this information, whether or not they are aware of its existence. The user agrees to accept this disclaimer upon using this information.

U.S. ARMY CORPS OF ENGINEERS ST. LOUIS DISTRICT		
Surveyed By:	Reviewed By:	Checked By:

Survey Information
 KAS KASKIA_BEND_UPPER_MISSISSIPPI
 UM_SL_KBC_20221007_BD_1
 07 October 2022



LAYERS

- River Mile
- Sailing Line
- 9' below LWRP2014 Surface
- 12' below LWRP2014 Surface
- 14' below LWRP2014 Surface

Depths shown are below LWRP2014 Surface

Aids to Navigation

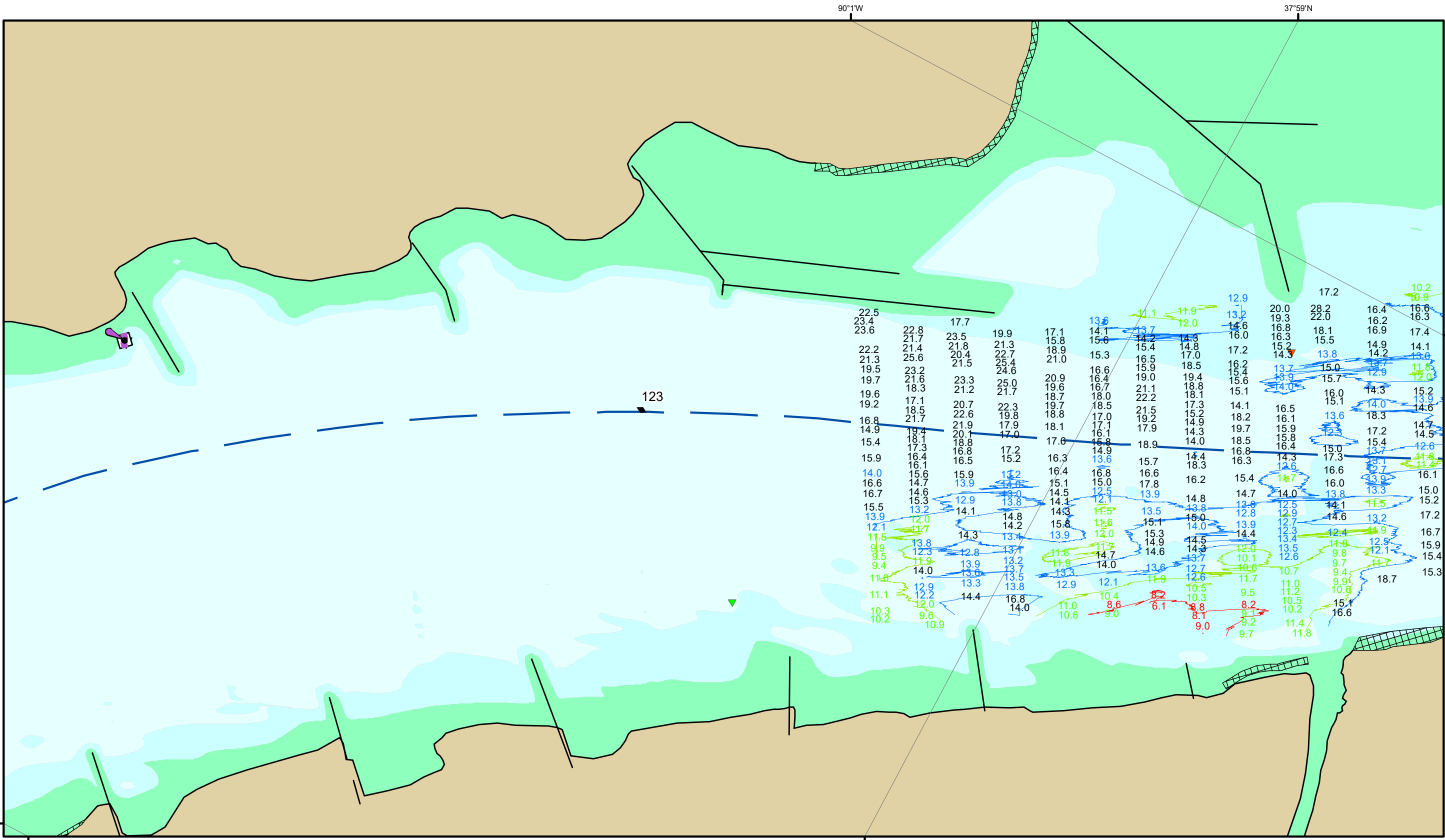
- Green
- Red
- Junction
- Green Buoy
- Red Buoy
- Training Structure
- Revetment

Feet

0 250 500 750 1,000

NOTES:
 Horizontal Coordinate System:
 North American Datum of 1983 (NAD83), projected to the State Plane Coordinate System (SPCS), Missouri East Zone. Distance units in U.S. Survey Feet.
 Vertical Datum:
 Soundings are shown in feet and indicate depths below the 2014 Low Water Reference Plane.
 The information depicted on this map represents the results of a survey conducted on the date indicated and can only be considered to represent the general condition existing at that time.
 The location of navigation aids are based on and provided by the U.S. Coast Guard.

Reach Number
 14 of 18



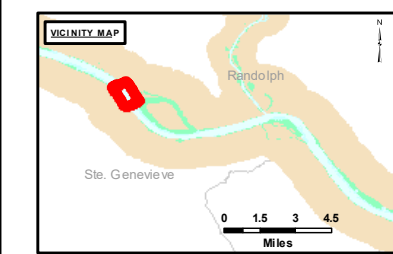
DISCLAIMER: The data represents the results of field observations for a specific date and time. It is not intended to be used for navigation purposes. The user is responsible for determining the accuracy and reliability of the data for their intended use. The Corps of Engineers does not warrant the accuracy or reliability of the data for any purpose other than that for which it was collected. The Corps of Engineers is not responsible for any damage or injury resulting from the use of this data.

RECLAIMER: The United States Government furnishes this information for a specific purpose. It is not intended to be used for navigation purposes. The user is responsible for determining the accuracy and reliability of the data for their intended use. The Corps of Engineers does not warrant the accuracy or reliability of the data for any purpose other than that for which it was collected. The Corps of Engineers is not responsible for any damage or injury resulting from the use of this data.

Surveyed By:	Reviewed By:	Checked By:
Submitted:	Documented:	Approved:

Survey Information
 KASKASKIA_BEND_UPPER_MISSISSIPPI
 UM_SL_KBC_20221007_BD_1
 07 October 2022

Reach Number
 15 of 18



LAYERS

- River Mile
- Sailing Line
- 9' below LWRP2014 Surface
- 12' below LWRP2014 Surface
- 14' below LWRP2014 Surface

Depths shown are below LWRP2014 Surface

Aids to Navigation

- Green Buoy
- Red Buoy
- Junction
- Training Structure
- Revetment

NOTES:
 Horizontal Coordinate System:
 North American Datum of 1983 (NAD83), projected to the State Plane Coordinate System (SPCS), Missouri East Zone. Distance units in U.S. Survey Feet.
 Vertical Datum:
 Soundings are shown in feet and indicate depths below the 2014 Low Water Reference Plane.
 The information depicted on this map represents the results of a survey conducted on the date indicated and can only be considered to represent the general condition existing at that time.
 The location of navigation aids are based on and provided by the U.S. Coast Guard.