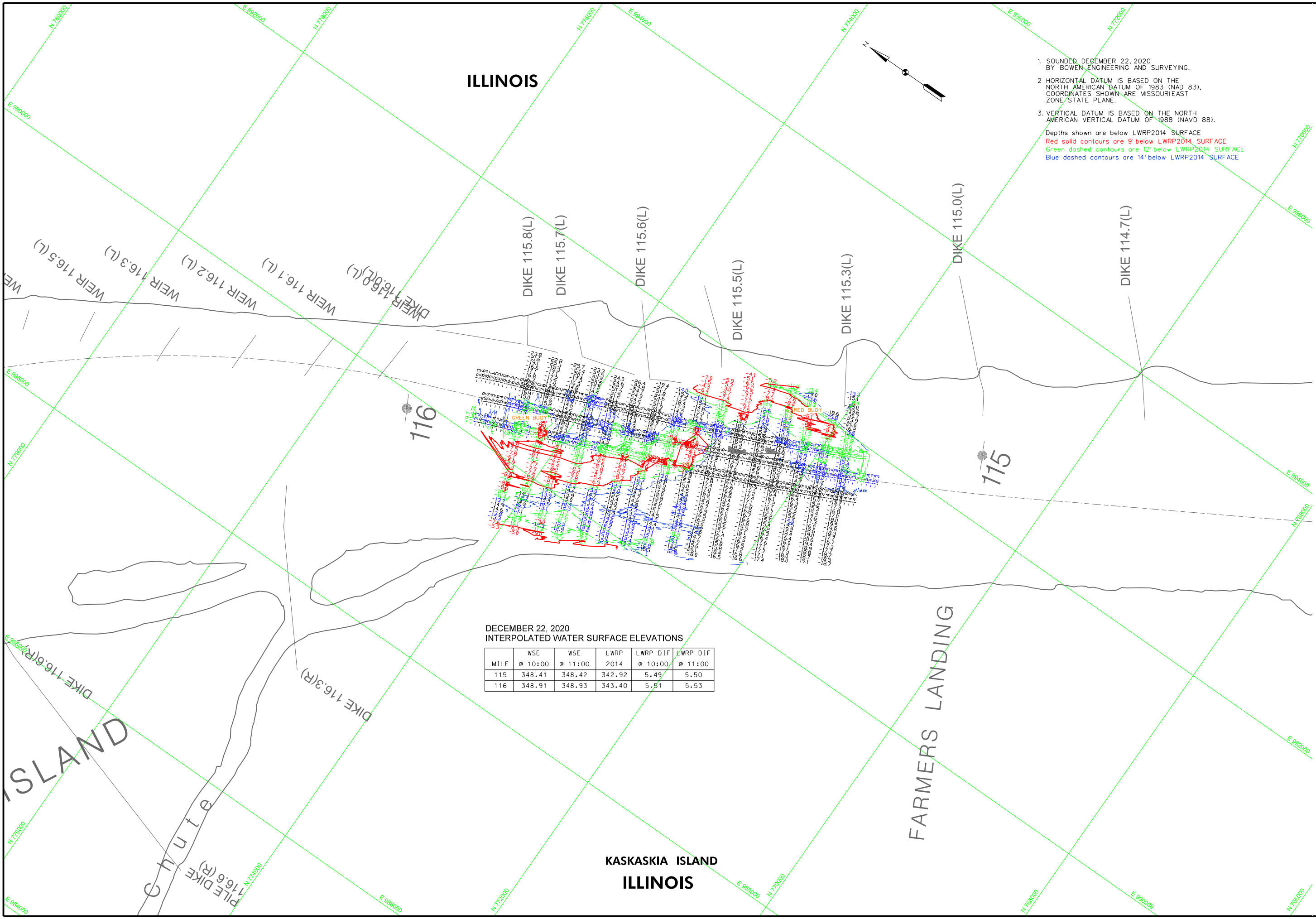




US Army Corps of Engineers  
St. Louis District

1. SOUNDED DECEMBER 22, 2020 BY BOWEN ENGINEERING AND SURVEYING.
2. HORIZONTAL DATUM IS BASED ON THE NORTH AMERICAN DATUM OF 1983 (NAD 83). COORDINATES SHOWN ARE MISSOURI EAST ZONE, STATE PLANE.
3. VERTICAL DATUM IS BASED ON THE NORTH AMERICAN VERTICAL DATUM OF 1988 (NAVD 88).

Depths shown are below LWRP2014 SURFACE  
 Red solid contours are 9' below LWRP2014 SURFACE  
 Green dashed contours are 12' below LWRP2014 SURFACE  
 Blue dashed contours are 14' below LWRP2014 SURFACE



DECEMBER 22, 2020  
 INTERPOLATED WATER SURFACE ELEVATIONS

MILE	WSE @ 10:00	WSE @ 11:00	LWRP 2014	LWRP DIF @ 10:00	LWRP DIF @ 11:00
115	348.41	348.42	342.92	5.49	5.50
116	348.91	348.93	343.40	5.51	5.53

ST. LOUIS, MO	JEFFERSON BARRACKS	CHESTER L	RED ROCK LANDING, MO
379.58	377.34	340.73	328.38
180.0	168.7	109.9	94.1
LWRP 2014	376.38	340.33	330.69
22 DEC 2020	1547600(151100)	X	517600(511100)

Survey Date:	DECEMBER 22, 2020
Drawn by:	X
Checked by:	X
Reviewed by:	X
Submitted:	X
Approved:	X

U.S. ARMY ENGINEER DIVISION  
 CORPS OF ENGINEERS  
 ST. LOUIS, MISSOURI  
 UPPER MISSISSIPPI RIVER BASIN  
 MISSISSIPPI RIVER

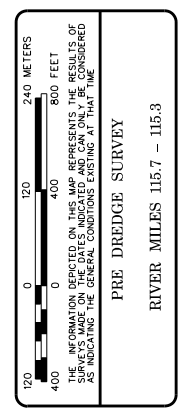


PLATE NUMBER  
 XX