

LAYERS

- River Mile
- Sailing Line
- 9' below LWRP2014 Surface
- 12' below LWRP2014 Surface
- 14' below LWRP2014 Surface

Depths shown are below LWRP2014 Surface

Aids to Navigation

- Green
- Red
- Junction
- Green Buoy
- Red Buoy
- Training Structure
- Revetment

Feet

0 250 500 750 1,000

NOTES:
 Horizontal Coordinate System:
 North American Datum of 1983 (NAD83), projected to the State Plane Coordinate System (SPCS), Missouri East Zone. Distance units in U.S. Survey Feet.
 Vertical Datum:
 Soundings are shown in feet and indicate depths below the 2014 Low Water Reference Plane.
 The information depicted on this map represents the results of a survey conducted on the date indicated and can only be considered to represent the general condition existing at that time.
 The location of navigation aids are based on and provided by the U.S. Coast Guard.

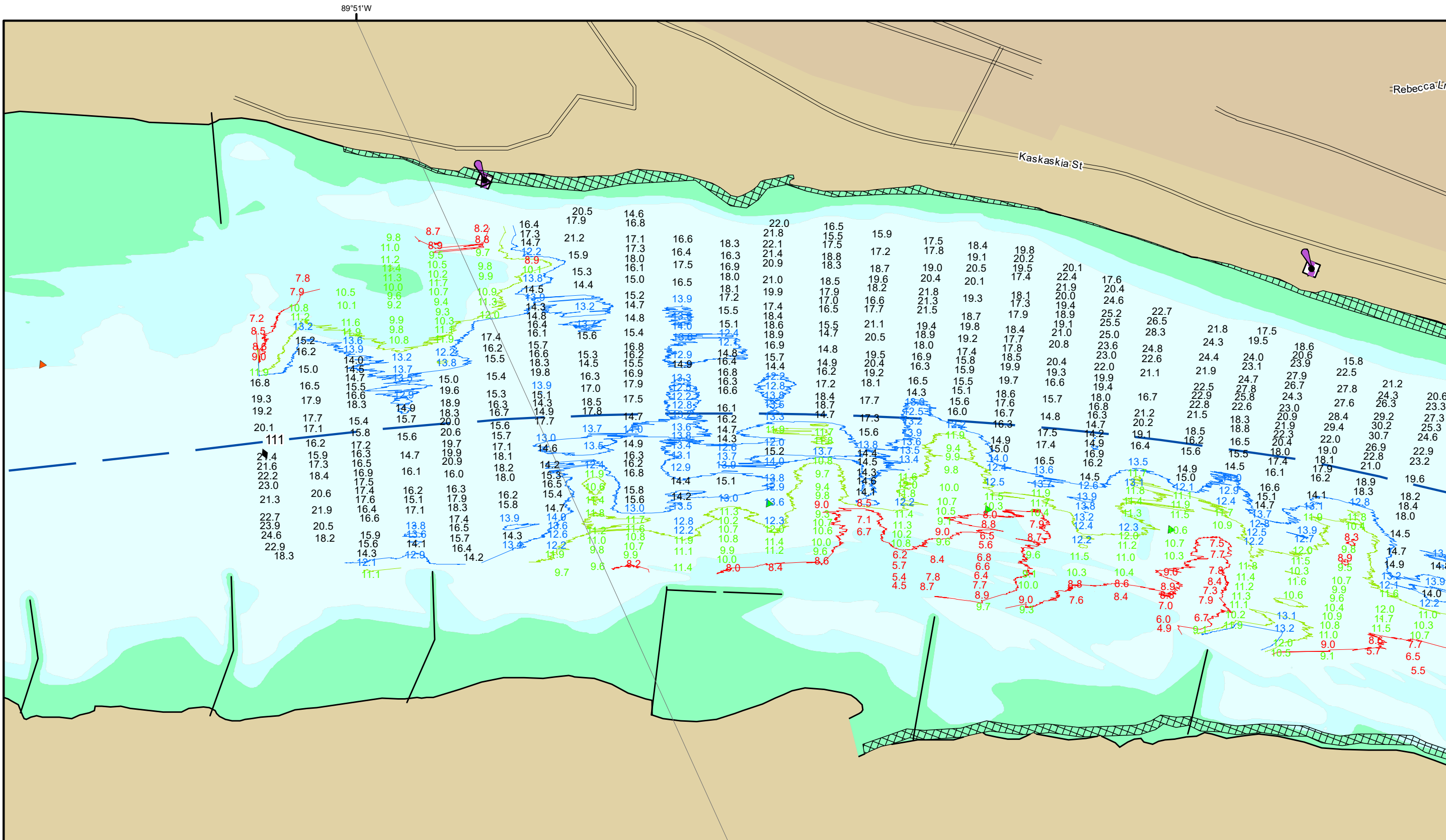


DISCLAIMER: The data represents the results of a survey conducted on the date indicated and can only be considered to represent the general condition existing at that time. The location of navigation aids are based on and provided by the U.S. Coast Guard.

Surveyed By:	Received By:	Checked By:
Submitted:	Documented:	Approved:

Survey Information
 CHESTER_REACH_UPPER_MISSISSIPPI
 UM_SL_CRC_20221011_BD_1
 11 October 2022

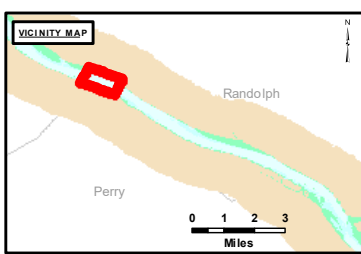
Reach Number
 9 of 12



DISCLAIMER: The United States Government furnishes this information for a specific purpose and does not warrant its accuracy or completeness. It is provided as a service to the user and is not to be used for any other purpose. The user assumes all liability for any errors or omissions in this information. The United States Government is not responsible for any damages or losses resulting from the use of this information. This information is provided as a service to the user and is not to be used for any other purpose. The user assumes all liability for any errors or omissions in this information. This information is provided as a service to the user and is not to be used for any other purpose. The user assumes all liability for any errors or omissions in this information.

Surveyed By:	Checked By:
Submitted:	Approved:

Survey Information
 CHESTER_REACH_UPPER_MISSISSIPPI
 UM_SL_CRC_20221011_BD_1
 11 October 2022



LAYERS

- River Mile
- Sailing Line
- 9' below LWRP2014 Surface
- 12' below LWRP2014 Surface
- 14' below LWRP2014 Surface

Depths shown are below LWRP2014 Surface

Aids to Navigation

- Green Buoy
- Red Buoy
- Junction
- Training Structure
- Revetment

Scale: 0 250 500 750 1,000 Feet

NOTES:
 Horizontal Coordinate System:
 North American Datum of 1983 (NAD83), projected to the State Plane Coordinate System (SPCS), Missouri East Zone. Distance units in U.S. Survey Feet.
 Vertical Datum:
 Soundings are shown in feet and indicate depths below the 2014 Low Water Reference Plane.
 The information depicted on this map represents the results of a survey conducted on the date indicated and can only be considered to represent the general condition existing at that time.
 The location of navigation aids are based on and provided by the U.S. Coast Guard.

Reach Number
 10 of 12