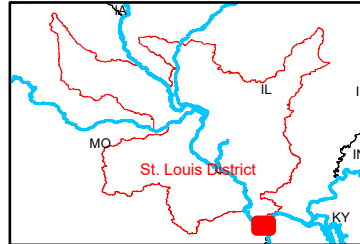
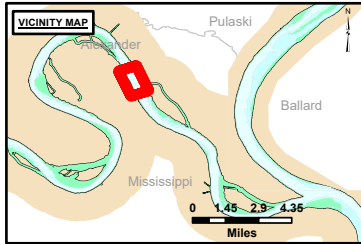


DISCLAIMER: The United States Government Lenders...
 The data represents the results of data collection...
 The information depicted on this map represents the results of a survey conducted on the date indicated and can only be considered to represent the general condition existing at that time.

Surveyed By:	Printed By:	Checked By:

Survey Information
 ELIZA_POINT_UPPER_MISSISSIPPI
 UM_SL_EPC_20230922_BD_1
 22 September 2023



LAYERS

- River Mile
- Sailing Line
- 9' below LWRP2014 Surface
- 12' below LWRP2014 Surface
- 14' below LWRP2014 Surface

Depths shown are below LWRP2014 Surface

Aids to Navigation

- Green
- Red
- Junction
- Green Buoy
- Red Buoy

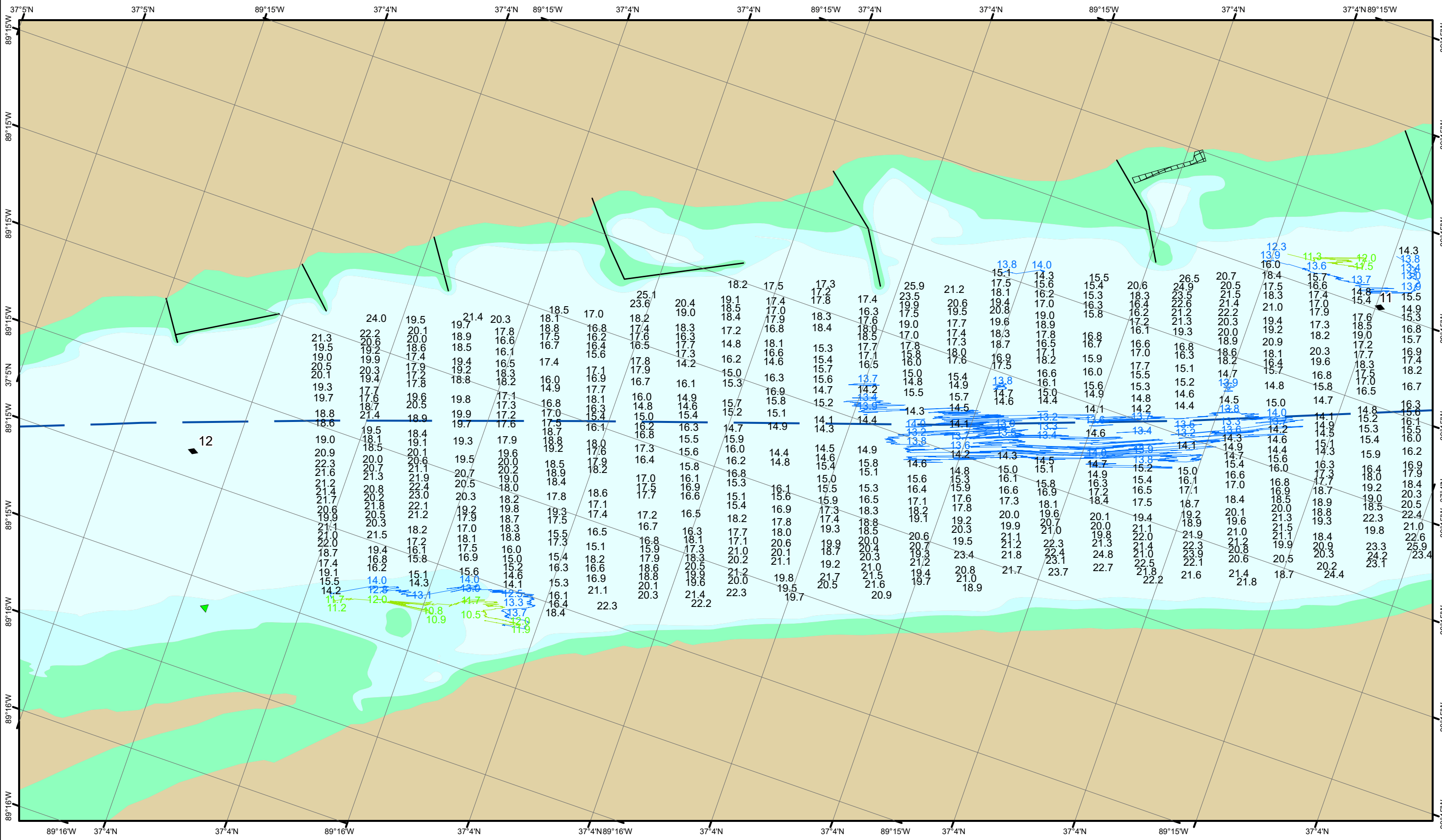
Structures

- Training Structure
- Revetment
- Tower/Power Poles
- Electrical Lines
- Fiber Optic Lines
- Pipelines

Scale: 0, 250, 500, 750, 1,000 Feet

NOTES:
 Horizontal Coordinate System: North American Datum of 1983 (NAD83), projected to the State Plane Coordinate System (SPCS), Missouri East Zone. Distance units in U.S. Survey Feet.
 Vertical Datum: Soundings are shown in feet and indicate depths below the 2014 Low Water Reference Plane.
 The information depicted on this map represents the results of a survey conducted on the date indicated and can only be considered to represent the general condition existing at that time.
 The location of navigation aids are based on and provided by the U.S. Coast Guard.

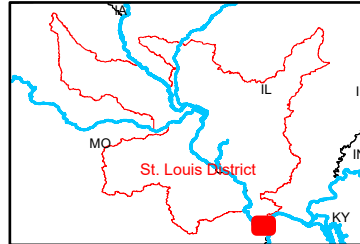
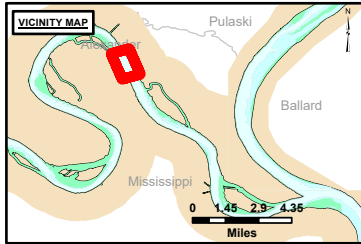
Reach Number
 15 of 27



DISCLAIMER: The United States Government furnishes this information as a service to the public. It is not intended to be used for any purpose other than that for which it was prepared. The United States Government makes no warranty, express or implied, as to the accuracy, reliability, or completeness of the information. The user shall be responsible for the proper use of the information. The United States Government shall not be held liable for any damages, including consequential damages, arising from the use of the information. These data belong to the Government. Therefore the information is not to be distributed, copied, or otherwise used without the express written permission of the Government. The recipient may not transfer these data to others without obtaining the permission of the Government.

Surveyed By:	Plotted By:	Checked By:

Survey Information
 ELIZA_POINT_UPPER_MISSISSIPPI
 UM_SL_EPC_20230922_BD_1
 22 September 2023



LAYERS

- River Mile
- Sailing Line
- 9' below LWRP2014 Surface
- 12' below LWRP2014 Surface
- 14' below LWRP2014 Surface

Depths shown are below LWRP2014 Surface

Aids to Navigation

- Green
- Red
- Junction
- Green Buoy
- Red Buoy

Structures

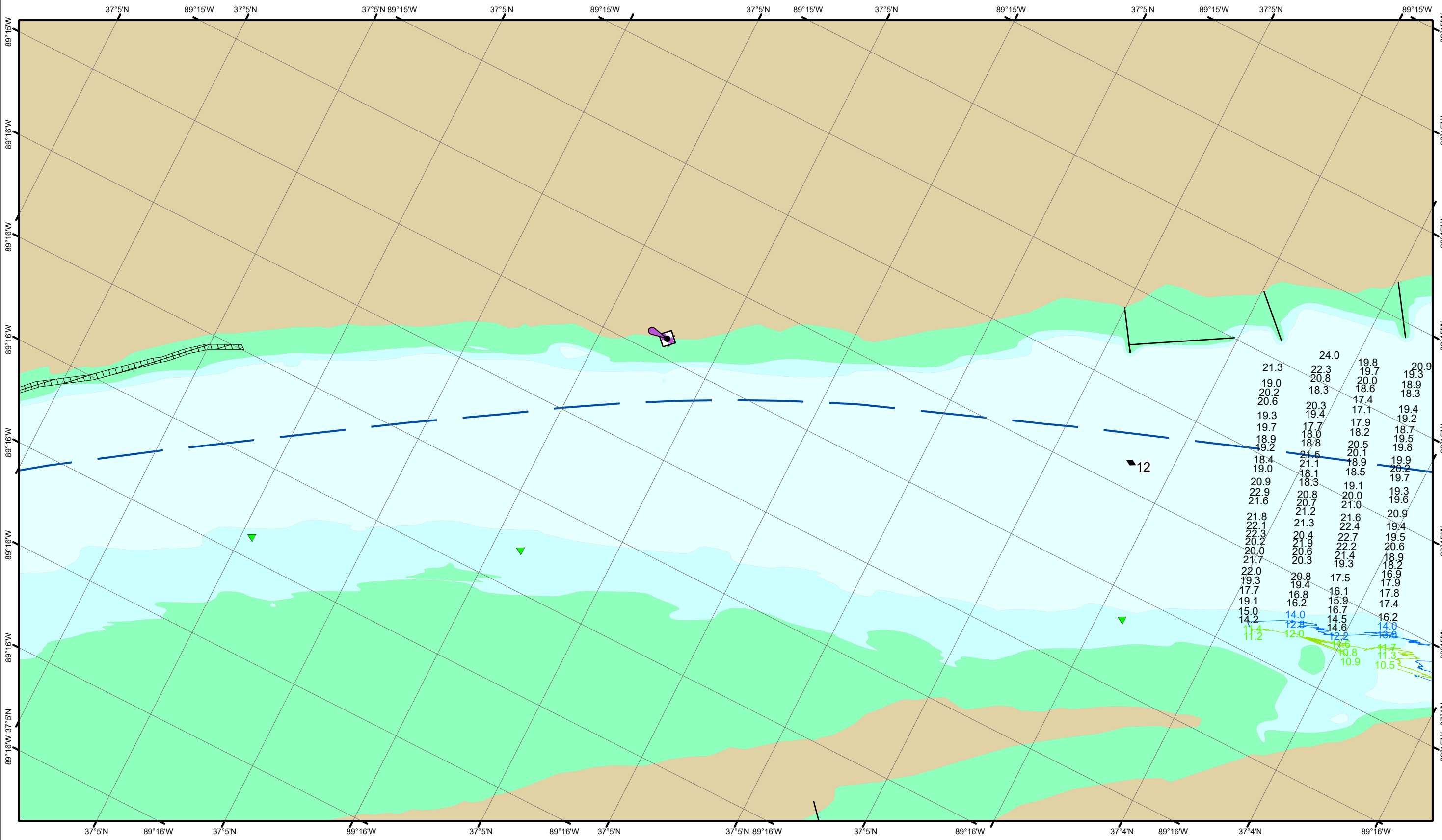
- Training Structure
- Revetment
- Tower/Power Poles
- Electrical Lines
- Fiber Optic Lines
- Pipelines

Vertical Datum:
 Soundings are shown in feet and indicate depths below the 2014 Low Water Reference Plane.

The information depicted on this map represents the results of a survey conducted on the date indicated and can only be considered to represent the general condition existing at that time.

The location of navigation aids are based on and provided by the U.S. Coast Guard.

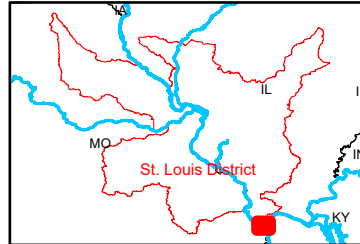
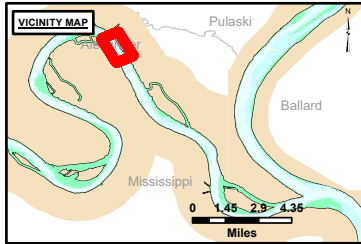
Reach Number
 16 of 27



DISCLAIMER: The United States Government furnishes this information as a service to the public and does not warrant its accuracy, completeness, or timeliness. The data represents the results of data collection/processing by a specific US Army Corps of Engineers project. It is not intended for use in any other project. The user assumes all liability for any use of the information other than that intended for the project for which it was provided. The user assumes all liability for any use of the information other than that intended for the project for which it was provided. The user assumes all liability for any use of the information other than that intended for the project for which it was provided.

Surveyed By:	Plotted By:	Checked By:

Survey Information
 ELIZA_POINT_UPPER_MISSISSIPPI
 UM_SL_EPC_20230922_BD_1
 22 September 2023



LAYERS

- River Mile
- Sailing Line
- 9' below LWRP2014 Surface
- 12' below LWRP2014 Surface
- 14' below LWRP2014 Surface

Depths shown are below LWRP2014 Surface

Aids to Navigation

- Green
- Red
- Junction
- Green Buoy
- Red Buoy

Structures

- Training Structure
- Revetment
- Tower/Power Poles
- Electrical Lines
- Fiber Optic Lines
- Pipelines

Feet
0 250 500 750 1,000

NOTES:
 Horizontal Coordinate System:
 North American Datum of 1983 (NAD83), projected to the State Plane Coordinate System (SPCS), Missouri East Zone. Distance units in U.S. Survey Feet.
 Vertical Datum:
 Soundings are shown in feet and indicate depths below the 2014 Low Water Reference Plane.
 The information depicted on this map represents the results of a survey conducted on the date indicated and can only be considered to represent the general condition existing at that time.
 The location of navigation aids are based on and provided by the U.S. Coast Guard.

Reach Number
 17 of 27