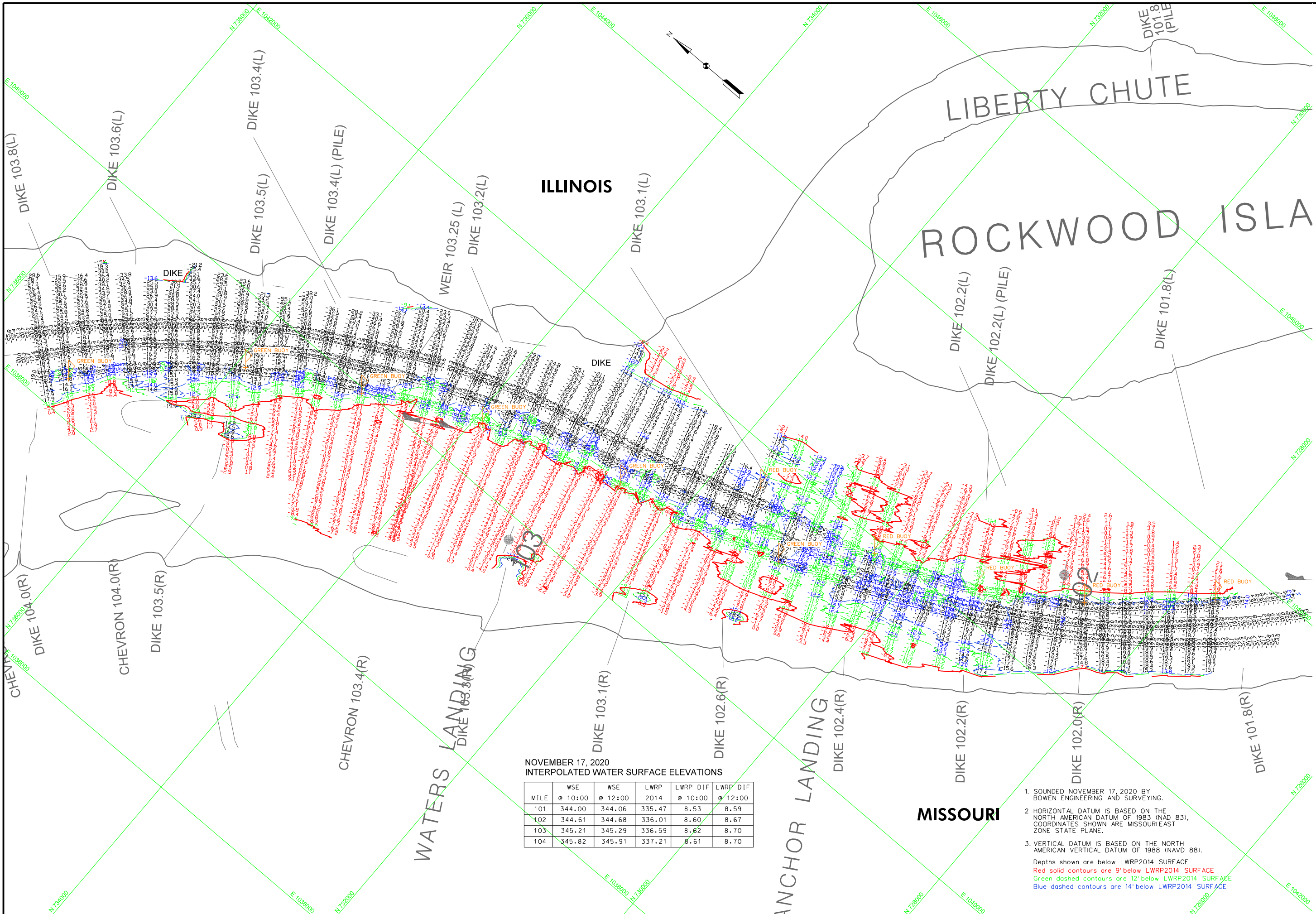


GAGE RECORD		CHESTER L	RED ROCK LANDING, MO	GRAND TOWER L
ZERO N.A.V.D.		340.73	328.38	321.43
MILE		09.9	94.1	81.9
LWRP 2014		340.33	330.69	325.33
17 NOV 2020		8.69(8)@ 8.63(2)@ 20	11.41(8)@ 11.41(2)@ 20	X

SURVEYED BY		SURVEY DATE	
BOWEN ENGINEERING	NOVEMBER 17, 2020	Drawn by:	Reviewed by:
Drawn by:	X	Submitted:	APPROVED:
Submitted:	X	File name:	Plot date:

U.S. ARMY ENGINEER DIVISION	
CORPS OF ENGINEERS	ST LOUIS, MISSOURI
UPPER MISSISSIPPI RIVER BASIN	MISSISSIPPI RIVER



NOVEMBER 17, 2020
INTERPOLATED WATER SURFACE ELEVATIONS

MILE	WSE		LWRP 2014	LWRP DIF	
	@ 10:00	@ 12:00		@ 10:00	@ 12:00
101	344.00	344.06	335.47	8.53	8.59
102	344.61	344.68	336.01	8.60	8.67
103	345.21	345.29	336.59	8.62	8.70
104	345.82	345.91	337.21	8.61	8.70

- SOUNDED NOVEMBER 17, 2020 BY BOWEN ENGINEERING AND SURVEYING.
- HORIZONTAL DATUM IS BASED ON THE NORTH AMERICAN DATUM OF 1983 (NAD 83). COORDINATES SHOWN ARE MISSOURI/EAST ZONE STATE PLANE.
- VERTICAL DATUM IS BASED ON THE NORTH AMERICAN VERTICAL DATUM OF 1988 (NAVD 88).
 Depths shown are below LWRP2014 SURFACE
 Red solid contours are 9' below LWRP2014 SURFACE
 Green dashed contours are 12' below LWRP2014 SURFACE
 Blue dashed contours are 14' below LWRP2014 SURFACE

