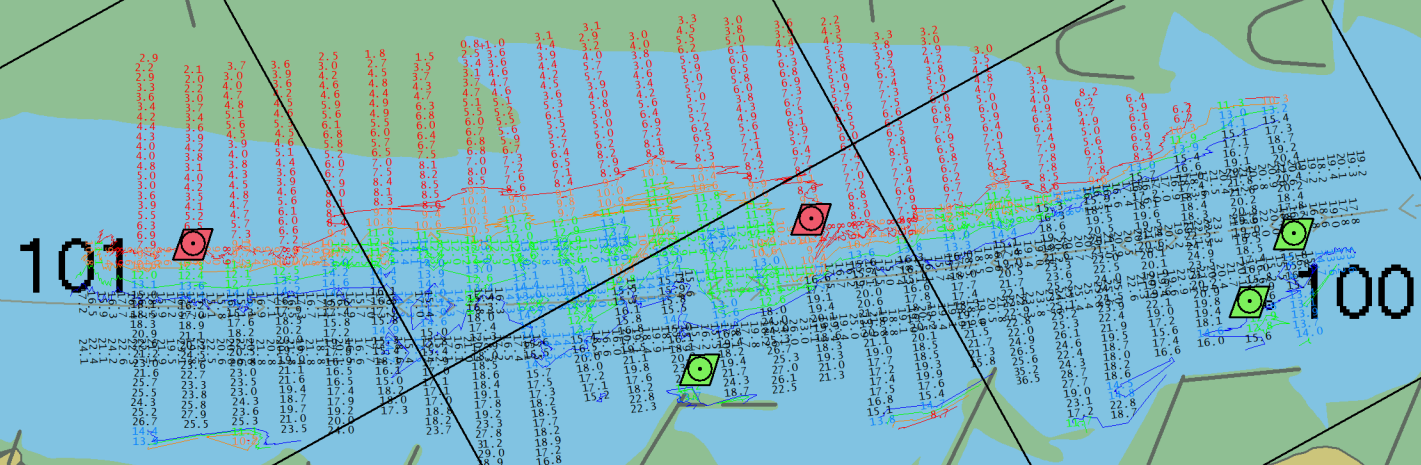


AUGUST 3, 2023
INTERPOLATED WATER SURFACE ELEVATIONS

MILE	WSE @ 9:00	WSE @ 14:00	LWRP 2014	LWRP DIF @ 9:00	LWRP DIF @ 14:00
100	339.63	340.00	334.77	4.86	5.23
101	340.19	340.57	335.47	4.72	5.10

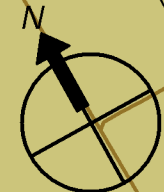
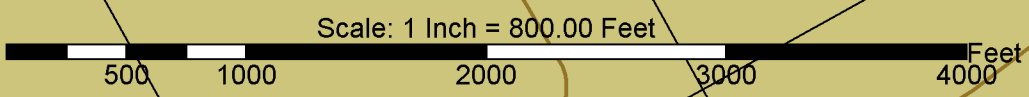
GAGE RECORD


River Mile	River Gage	Zer6 NAVD88	Time 1	Stage 1	Time 2	Stage 2
94.1	Red Rock Landing, MO	328.38	9:00	7.95	14:00	8.29
109.9	Chester, IL	340.73	9:00	4.44	14:00	4.86



SURVEY NOTES:

- HORIZONTAL DATUM:
NAD83 (2011) MISSOURI EAST 2401, US SURVEY FOOT
- VERTICAL DATUM:
NAVD88 (GEOID18), FOOT
- DEPTHS SHOWN ARE BELOW LWRP2014 SURFACE.
- SURVEY INFORMATION:
SURVEY VESSEL: BOWEN1 (24' SCULLY'S WORK BOAT)
ECHO SOUNDER: TELEDYNE ECHOTRAC E20
TRANSDUCER: ODOM SMSW200-4 (4" BEAM, 200 kHz)
SOUND VELOCITY SOURCE: VALEPORT SWIFT SVP
INS: SBG ELLIPSE2-E-G4A2-B1
GNSS RECEIVER: TRIMBLE MPS865 WITH DUAL ANTENNAS
GNSS SOURCE: TRIMBLE CENTERPOINT RTX
TIDE METHOD: REAL-TIME KINEMATIC
TIDE SOURCE: TRIMBLE CENTERPOINT RTX
- THE SURVEY WAS COMPLETED IN ACCORDANCE WITH QUALITY CONTROL PLAN PROCEDURES.





St. Louis District

DATES OF SURVEY:
AUGUST 3, 2023

SCALE:
1" = 800' (ANSI B)

FIELD BOOKS:

FILE NO.: 100-8323
REQUEST NO.: W91P23P086

APPROVED: FIELD CARTOGRAPHER

APPROVED: CIVIL ENGINEERING TECHNICIAN

APPROVED: ASST. CHIEF OF SURVEY

APPROVED: CHIEF OF SURVEY

Date:

U.S. ARMY CORPS OF ENGINEERS
ST. LOUIS DISTRICT
ST. LOUIS, MISSOURI

SURVEYED BY:
BOWEN ENGINEERING AND SURVEYING, P.C.
2121 MEGAN DRIVE
CAPE GIRARDEAU, MO 63701

UPPER MISSISSIPPI RIVER BASIN
MISSISSIPPI RIVER
PRE DREDGE SURVEY
RIVER MILES 100.9 - 100.0

SHEET NO.
1 OF 1