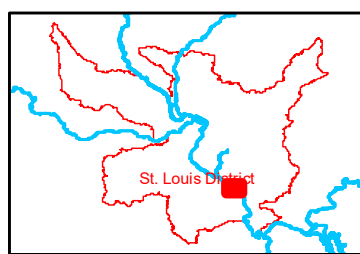
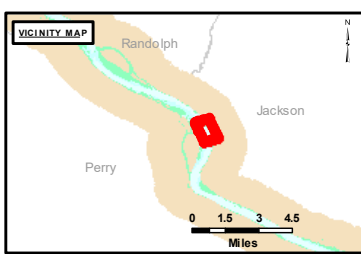


89°40'W

89°40'W

37°47'N

37°47'N



**LAYERS**

- River Mile
- Sailing Line
- 9' below LWRP2014 Surface
- 12' below LWRP2014 Surface
- 14' below LWRP2014 Surface

Depths shown are below LWRP2014 Surface

**Aids to Navigation**

- Green
- Red
- Junction
- Green Buoy
- Red Buoy
- Training Structure
- Rivetment

**NOTES:**  
 Horizontal Coordinate System:  
 North American Datum of 1983 (NAD83), projected to the State Plane Coordinate System (SPCS), Missouri East Zone. Distance units in U.S. Survey Feet.  
 Vertical Datum:  
 Soundings are shown in feet and indicate depths below the 2014 Low Water Reference Plane.  
 The information depicted on this map represents the results of a survey conducted on the date indicated and can only be considered to represent the general condition existing at that time.  
 The location of navigation aids are based on and provided by the U.S. Coast Guard.



**DISCLAIMER:** The United States Government furnishes this information for a specific purpose and does not warrant its accuracy, completeness, or timeliness. The user of this information is advised to verify the accuracy, completeness, and timeliness of the information before relying on it for any purpose. The user of this information is advised to verify the accuracy, completeness, and timeliness of the information before relying on it for any purpose. The user of this information is advised to verify the accuracy, completeness, and timeliness of the information before relying on it for any purpose.

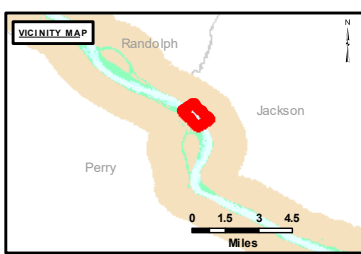
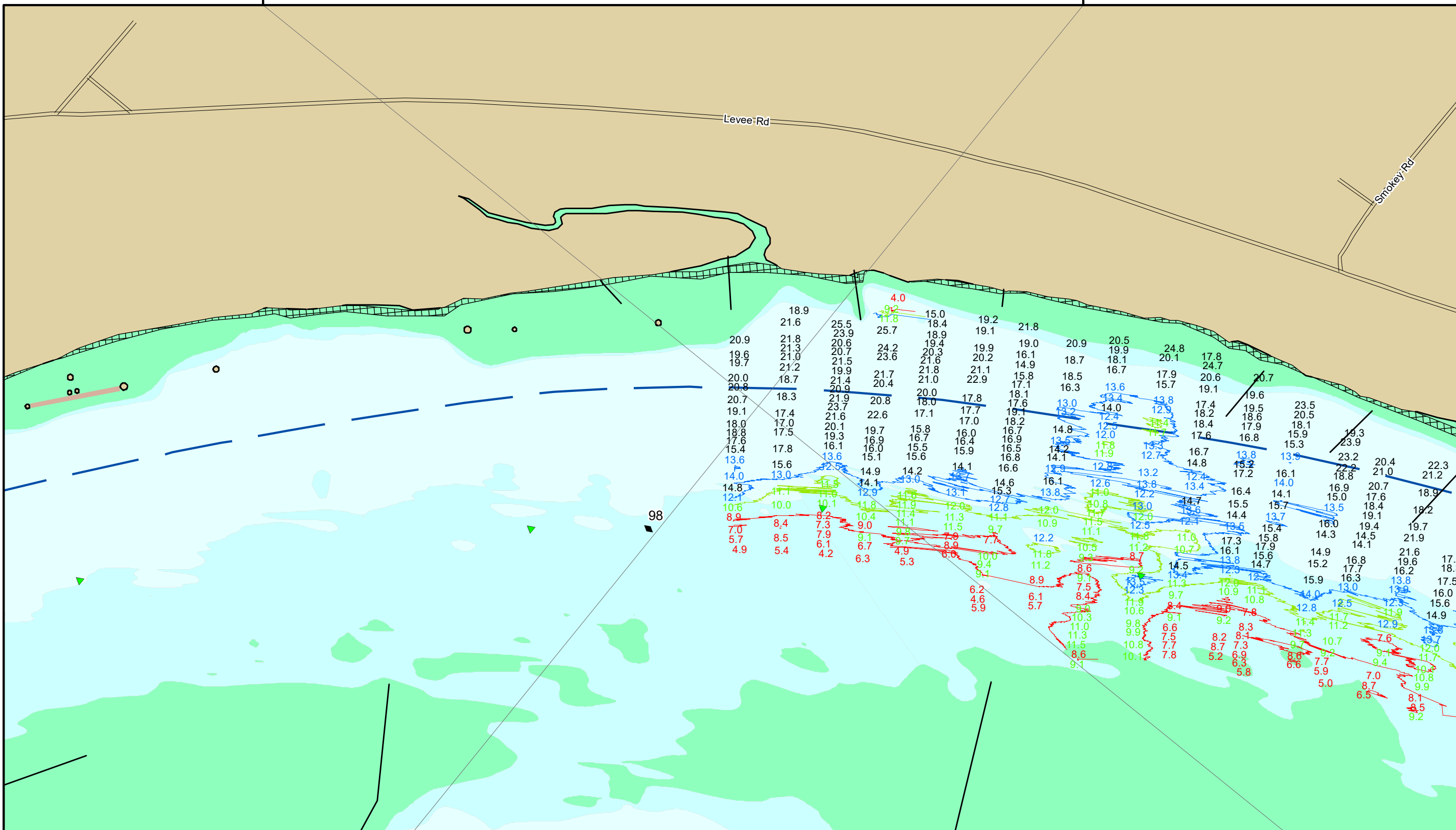
U.S. ARMY CORPS OF ENGINEERS ST. LOUIS DISTRICT		
Submitted By:	Reviewed By:	Checked By:

**Survey Information**  
 RED\_ROCK\_UPPER\_MISSISSIPPI  
 UM\_SL\_RRC\_20220928\_BD\_2  
 28 September 2022

**Reach Number**  
 9 of 17

89°40'W

37°48'N



**LAYERS**

- River Mile
- Sailing Line
- 9' below LWRP2014 Surface
- 12' below LWRP2014 Surface
- 14' below LWRP2014 Surface

Depths shown are below LWRP2014 Surface

**Aids to Navigation**

- Green
- Red
- Junction
- Green Buoy
- Red Buoy
- Training Structure
- Revetment

**NOTES:**  
 Horizontal Coordinate System:  
 North American Datum of 1983 (NAD83), projected to the State Plane Coordinate System (SPCS), Missouri East Zone. Distance units in U.S. Survey Feet.  
 Vertical Datum:  
 Soundings are shown in feet and indicate depths below the 2014 Low Water Reference Plane.  
 The information depicted on this map represents the results of a survey conducted on the date indicated and can only be considered to represent the general condition existing at that time.  
 The location of navigation aids are based on and provided by the U.S. Coast Guard.



**DISCLAIMER:** The United States Government furnishes this information for a specific purpose and does not warrant its accuracy, completeness, or timeliness. The user of this information is advised to verify the accuracy, completeness, and timeliness of the information before relying on it for any purpose. The user of this information is advised to verify the accuracy, completeness, and timeliness of the information before relying on it for any purpose. The user of this information is advised to verify the accuracy, completeness, and timeliness of the information before relying on it for any purpose.

Surveyed By:	Checked By:
Drawn By:	Approved By:
Submitted:	Accepted:

**Survey Information**  
 RED\_ROCK\_UPPER\_MISSISSIPPI  
 UM\_SL\_RRC\_20220928\_BD\_2  
 28 September 2022

**Reach Number**  
 10 of 17