



St. Louis District

SURVEY NOTES:

- 1) HORIZONTAL DATUM:
NAD83 (2011) MISSOURI EAST 2401, US SURVEY FOOT
- 2) VERTICAL DATUM:
NAVD88 (GEOID18), FOOT
- 3) DEPTHS SHOWN ARE BELOW LWRP2014 SURFACE.
- 4) SURVEY INFORMATION:
SURVEY VESSEL: BOWEN1 (24' SCULLY'S WORK BOAT)
ECHO SOUNDER: TELEDYNE ECHOTRAC E20
TRANSDUCER: ODOM SMSW200-4 (4" BEAM, 200 kHz)
SOUND VELOCITY SOURCE: VALEPORT SWIFT SVP
INS: SBG ELLIPSE2-E-G4A2-B1
GNSS RECEIVER: TRIMBLE MPS865 WITH DUAL ANTENNAS
GNSS SOURCE: TRIMBLE CENTERPOINT RTX
TIDE METHOD: REAL-TIME KINEMATIC
TIDE SOURCE: TRIMBLE CENTERPOINT RTX
- 5) THE SURVEY WAS COMPLETED IN ACCORDANCE WITH QUALITY CONTROL PLAN PROCEDURES.

DECEMBER 6 2023
INTERPOLATED WATER SURFACE ELEVATIONS

MILE	WSE @ 10:00	WSE @ 12:00	LWRP 2014	LWRP DIF @ 10:00	LWRP DIF @ 12:00
55	313.34	313.27	311.44	1.90	1.83
56	313.87	313.81	312.00	1.87	1.81
57	314.41	314.35	312.45	1.96	1.90

GAGE RECORD

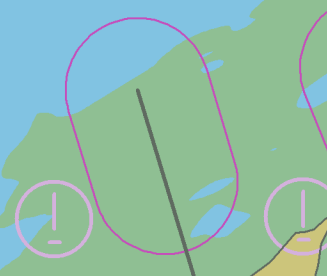
River Mile	River Gage	Zero NAVD88	Time 1	Stage 1	Time 2	Stage 2
52.1	Cape Girardeau, MO	304.27	10:00	7.52	12:00	7.45
66.3	Moccasin Springs, MO	313.33	10:00	6.04	12:00	6.00

Devils Island / Swiftsure Tow ILLINOIS

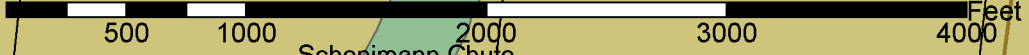
Devils Island Field Lt. (56.8)

57

56



Scale: 1 Inch = 800.00 Feet



Schenimann Chute

MISSOURI

DATES OF SURVEY:
DECEMBER 6, 2023

FILE NO.: 0661.0623
REQUEST NO.: W91P23F0086

SCALE:
1" = 800' (ANSI B)

FIELD BOOKS:

Approved: _____
FIELD CARTOGRAPHER

Approved: _____
CIVIL ENGINEERING TECHNICIAN

Approved: _____
ASST. CHIEF OF SURVEY

Approved: _____
CHIEF OF SURVEY

Date: _____

U.S. ARMY CORPS OF ENGINEERS
ST. LOUIS, MISSOURI

SURVEYED BY:
BOWEN ENGINEERING AND SURVEYING, P.C.
2121 MEGAN DRIVE
CAPE GIRARDEAU, MO 63701

UPPER MISSISSIPPI RIVER
BASIN
MISSISSIPPI RIVER
POST DREDGE SURVEY
RIVER MILES 56.8 - 55.9

SHEET NO.