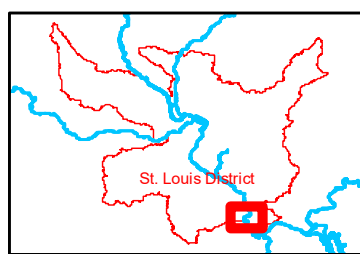
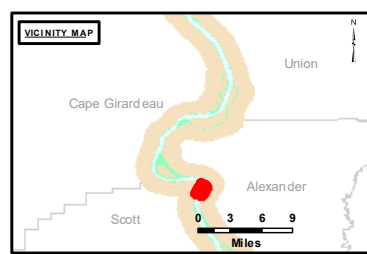


DISCLAIMER: The United States Government furnishes this information for a specific purpose and does not warrant its accuracy or completeness. The user of this information assumes all liability for any errors or omissions in the data furnished. This information is provided for informational purposes only and is not intended for navigation. The user of this information is advised to consult the appropriate charts and publications for the most current information. The user of this information is advised to consult the appropriate charts and publications for the most current information.

U.S. ARMY CORPS OF ENGINEERS ST. LOUIS DISTRICT		
Surveyed By:	Reviewed By:	Checked By:
Submitted:	Documented:	Approved:

Survey Information
 DEVILS ISLAND_UPPER_MISSISSIPPI
 UM_SL_DIC_20221005_BD_1
 05 October 2022



LAYERS

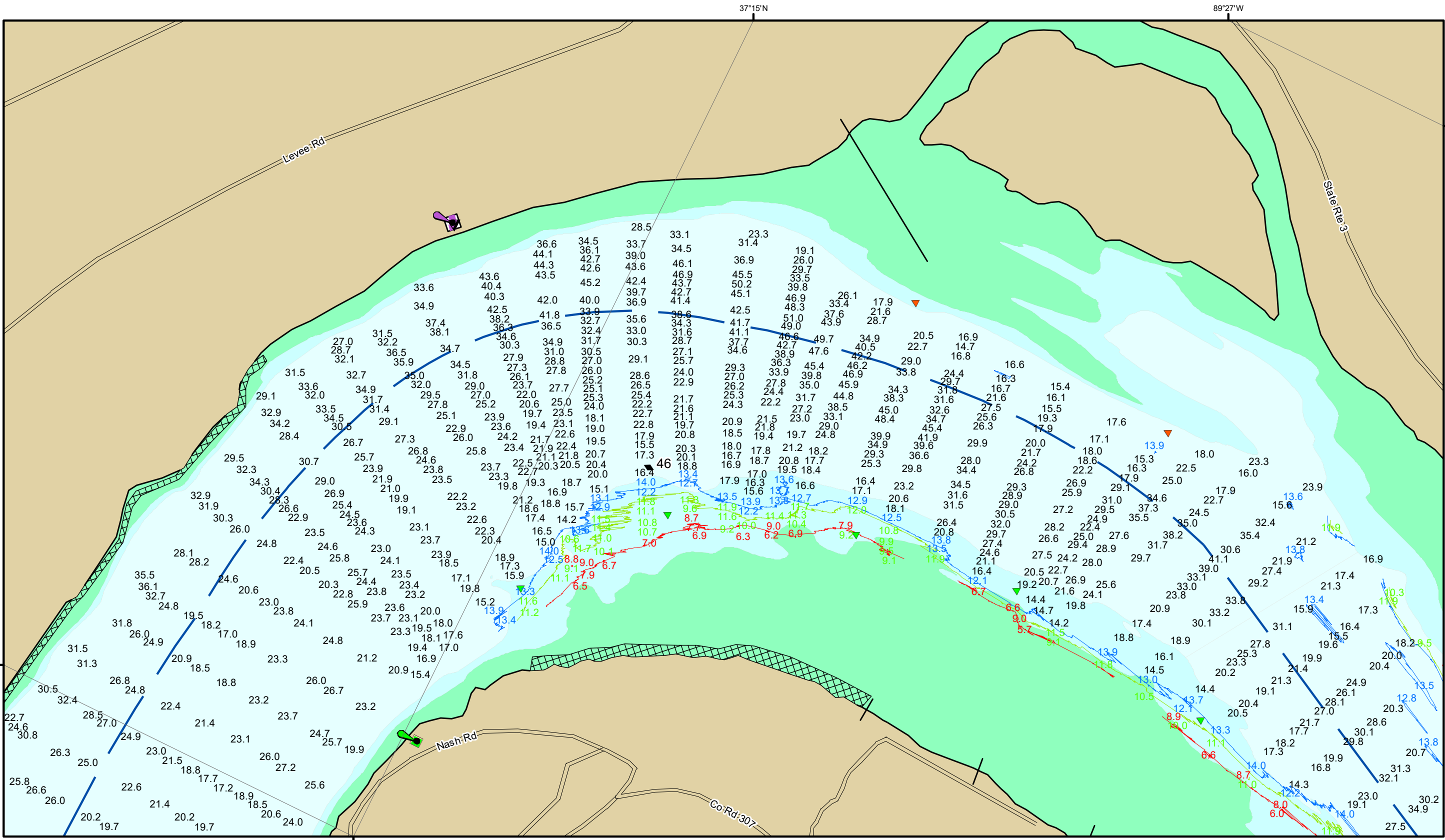
- River Mile
- Sailing Line
- 9' below LWRP2014 Surface
- 12' below LWRP2014 Surface
- 14' below LWRP2014 Surface

Depths shown are below LWRP2014 Surface

Aids to Navigation

- Green
- Red
- Junction
- Green Buoy
- Red Buoy
- Training Structure
- Revetment

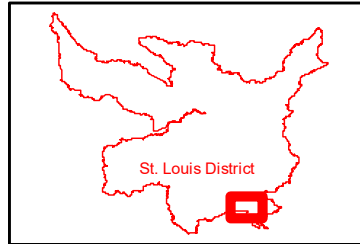
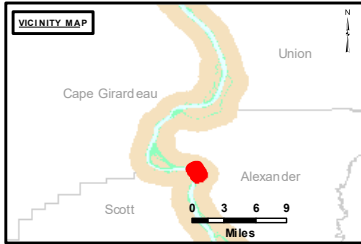
NOTES:
 Horizontal Coordinate System:
 North American Datum of 1983 (NAD83), projected to the State Plane Coordinate System (SPCS), Missouri East Zone. Distance units in U.S. Survey Feet.
 Vertical Datum:
 Soundings are shown in feet and indicate depths below the 2014 Low Water Reference Plane.
 The information depicted on this map represents the results of a survey conducted on the date indicated and can only be considered to represent the general condition existing at that time.
 The location of navigation aids are based on and provided by the U.S. Coast Guard.



DISCLAIMER: The United States Government furnishes this information for a specific purpose and does not warrant its accuracy or completeness. It is provided as is, with all faults. The user assumes all liability for any errors or omissions. The United States Government is not responsible for any damages or losses resulting from the use of this information. The user agrees to hold the United States Government harmless from any and all claims, damages, and expenses, including reasonable attorneys' fees, that may be asserted against or incurred by the United States Government or its employees, agents, or contractors, in connection with the use of this information. The user further agrees to indemnify and hold the United States Government harmless from any and all claims, damages, and expenses, including reasonable attorneys' fees, that may be asserted against or incurred by the user or its employees, agents, or contractors, in connection with the use of this information.

U.S. ARMY CORPS OF ENGINEERS ST. LOUIS DISTRICT		
Surveyed By:	Reviewed By:	Checked By:
Submitted:	Documented:	Approved:

Survey Information
 DEVILS ISLAND, UPPER MISSISSIPPI
 UM_SL_DIC_20221005_BD_1
 05 October 2022



LAYERS

- River Mile
- Sailing Line
- 9' below LWRP2014 Surface
- 12' below LWRP2014 Surface
- 14' below LWRP2014 Surface

Depths shown are below LWRP2014 Surface

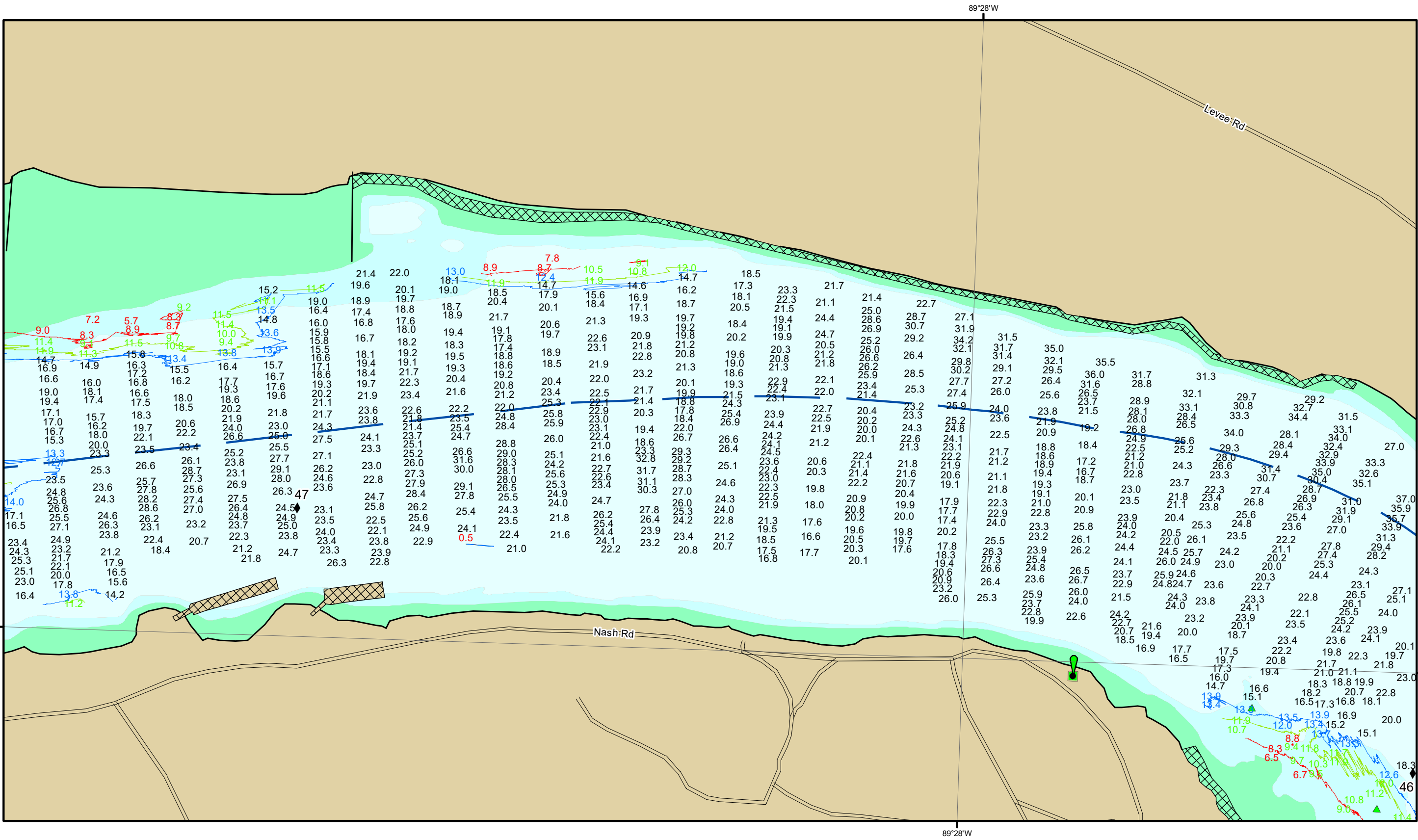
Aids to Navigation

- Green Buoy (▲)
- Red Buoy (▲)
- Junction (●)
- Training Structure (---)
- Revetment (▣)

Scale: 0, 250, 500, 750, 1,000 Feet

NOTES:
 Horizontal Coordinate System:
 North American Datum of 1983 (NAD83), projected to the State Plane Coordinate System (SPCS), Missouri East Zone. Distance units in U.S. Survey Feet.
 Vertical Datum:
 Soundings are shown in feet and indicate depths below the 2014 Low Water Reference Plane.
 The information depicted on this map represents the results of a survey conducted on the date indicated and can only be considered to represent the general condition existing at that time.
 The location of navigation aids are based on and provided by the U.S. Coast Guard.

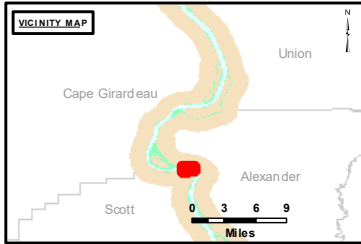
Reach Number
 8 of 35



DISCLAIMER: The data represented on this map is the result of a survey conducted for a specific purpose and is not intended for use for any other purpose. The user of this map assumes all liability for any errors or omissions in the data. The Corps of Engineers does not warrant the accuracy or completeness of the data. The Corps of Engineers is not responsible for any damages or losses resulting from the use of this map. The data is for informational purposes only and should not be used for navigation or other critical applications. The data is subject to change without notice. The Corps of Engineers is not responsible for any damages or losses resulting from the use of this map.

Surveyed By:	Checked By:
Drawn By:	Approved By:

Survey Information
 DEVILS_ISLAND_UPPER_MISSISSIPPI
 UM_SL_DIC_20221005_BD_1
 05 October 2022



LAYERS

- River Mile
- Sailing Line
- 9' below LWRP2014 Surface
- 12' below LWRP2014 Surface
- 14' below LWRP2014 Surface

Depths shown are below LWRP2014 Surface

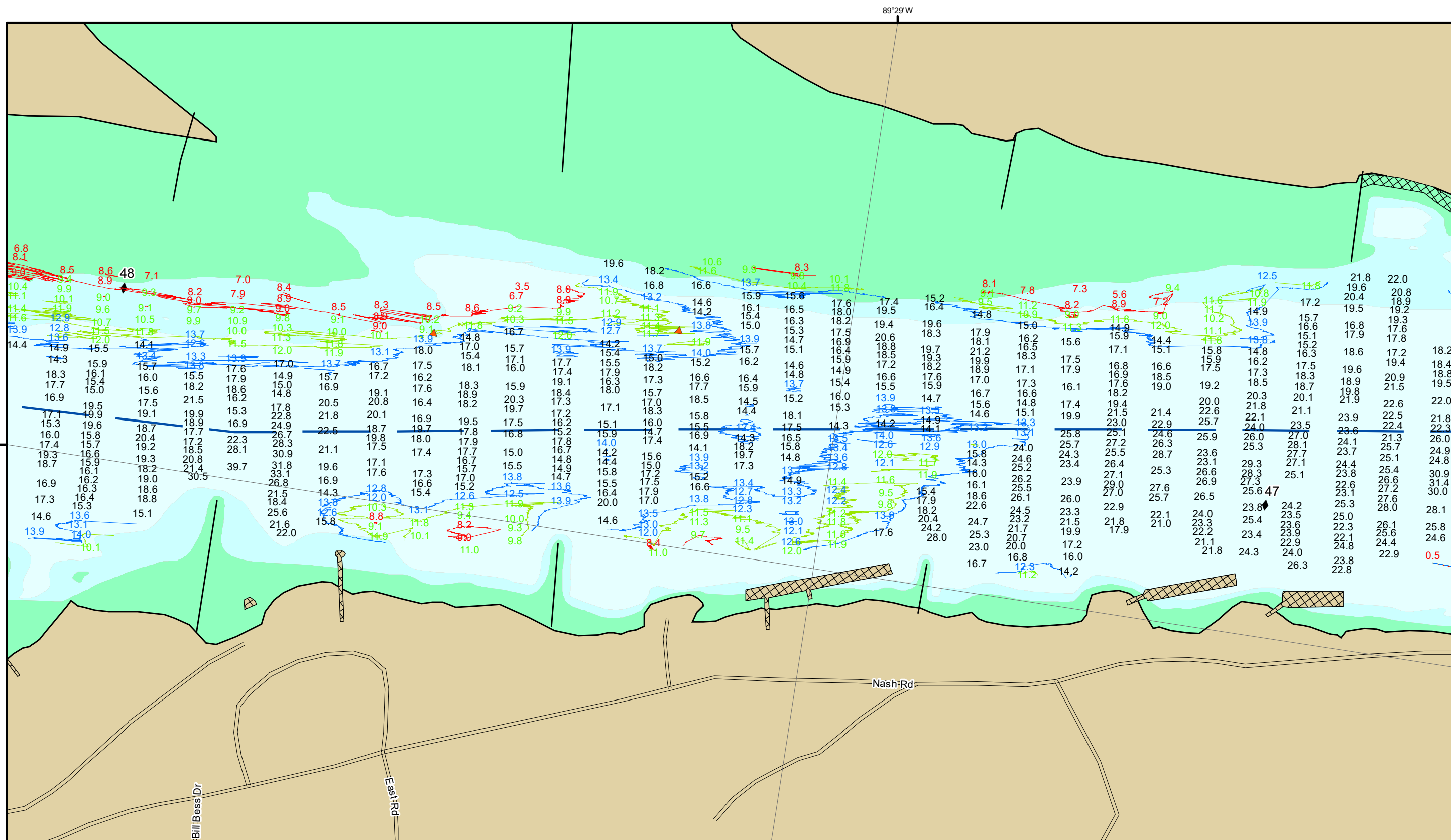
Aids to Navigation

- Green
- Red
- Junction
- Green Buoy
- Red Buoy
- Training Structure
- Revetment

Scale: 0 250 500 750 1,000 Feet

NOTES:
 Horizontal Coordinate System: North American Datum of 1983 (NAD83), projected to the State Plane Coordinate System (SPCS), Missouri East Zone. Distance units in U.S. Survey Feet.
 Vertical Datum: Soundings are shown in feet and indicate depths below the 2014 Low Water Reference Plane.
 The information depicted on this map represents the results of a survey conducted on the date indicated and can only be considered to represent the general condition existing at that time.
 The location of navigation aids are based on and provided by the U.S. Coast Guard.

Reach Number
 9 of 35

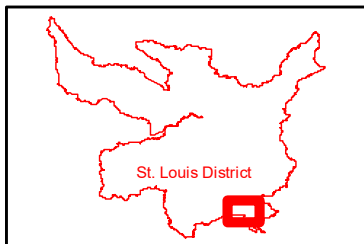
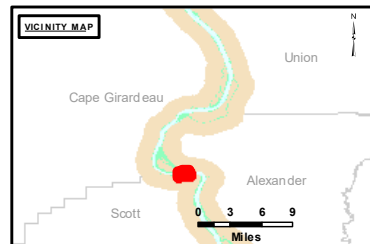


DISCLAIMER: The data represents the results of field observations and is not intended to be used for navigation purposes. The data is provided for informational purposes only. The user assumes all responsibility for the use of the data. The data is not to be used for any purpose other than that for which it was collected. The data is not to be used for any purpose other than that for which it was collected. The data is not to be used for any purpose other than that for which it was collected.

U.S. ARMY CORPS OF ENGINEERS ST. LOUIS DISTRICT	
Surveyed By:	
Reviewed By:	
Checked By:	

Survey Information
 DEVILS ISLAND_UPPER_MISSISSIPPI
 UM_SL_DIC_20221005_BD_1
 05 October 2022

Reach Number
 10 of 35



LAYERS

- River Mile
- Sailing Line
- 9' below LWRP2014 Surface
- 12' below LWRP2014 Surface
- 14' below LWRP2014 Surface

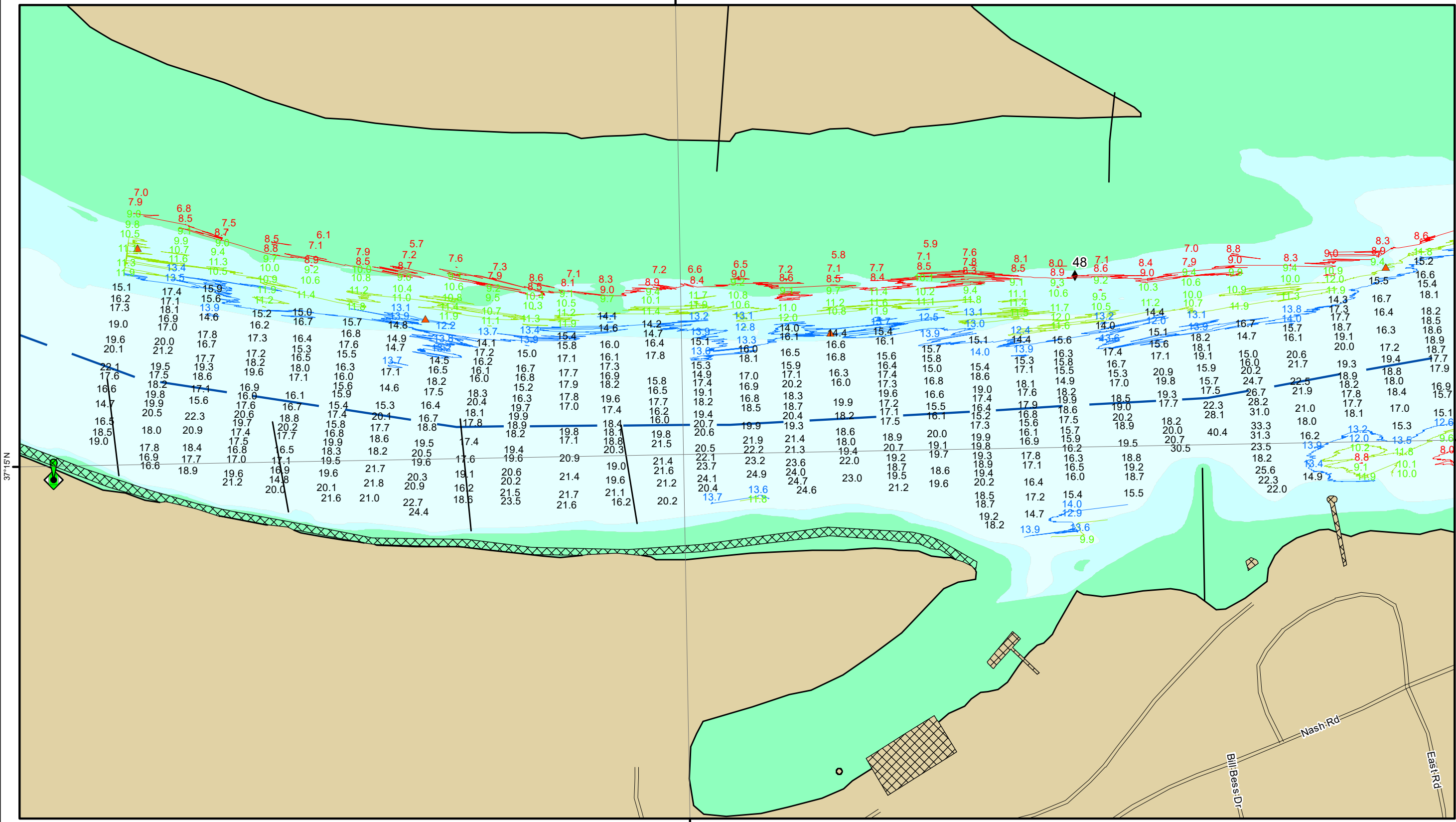
Depths shown are below LWRP2014 Surface

Aids to Navigation

- Green
- Red
- Junction
- Green Buoy
- Red Buoy
- Training Structure
- Revetment

NOTES:
 Horizontal Coordinate System:
 North American Datum of 1983 (NAD83), projected to the State Plane Coordinate System (SPCS), Missouri East Zone. Distance units in U.S. Survey Feet.
 Vertical Datum:
 Soundings are shown in feet and indicate depths below the 2014 Low Water Reference Plane.
 The information depicted on this map represents the results of a survey conducted on the date indicated and can only be considered to represent the general condition existing at that time.
 The location of navigation aids are based on and provided by the U.S. Coast Guard.

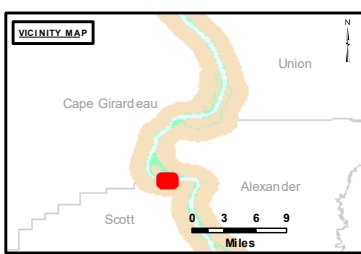
89°30'W



37°15'N

37°15'N

89°30'W



LAYERS

- ◆ River Mile
- Sailing Line
- 9' below LWRP2014 Surface
- 12' below LWRP2014 Surface
- 14' below LWRP2014 Surface

Depths shown are below LWRP2014 Surface

Aids to Navigation

- Green
- Red
- Junction
- ▲ Green Buoy
- ▲ Red Buoy

— Training Structure

▣ Revetment

NOTES:
 Horizontal Coordinate System:
 North American Datum of 1983 (NAD83), projected to the State Plane Coordinate System (SPCS), Missouri East Zone. Distance units in U.S. Survey Feet.

Vertical Datum:
 Soundings are shown in feet and indicate depths below the 2014 Low Water Reference Plane.

The information depicted on this map represents the results of a survey conducted on the date indicated and can only be considered to represent the general condition existing at that time.

The location of navigation aids are based on and provided by the U.S. Coast Guard.



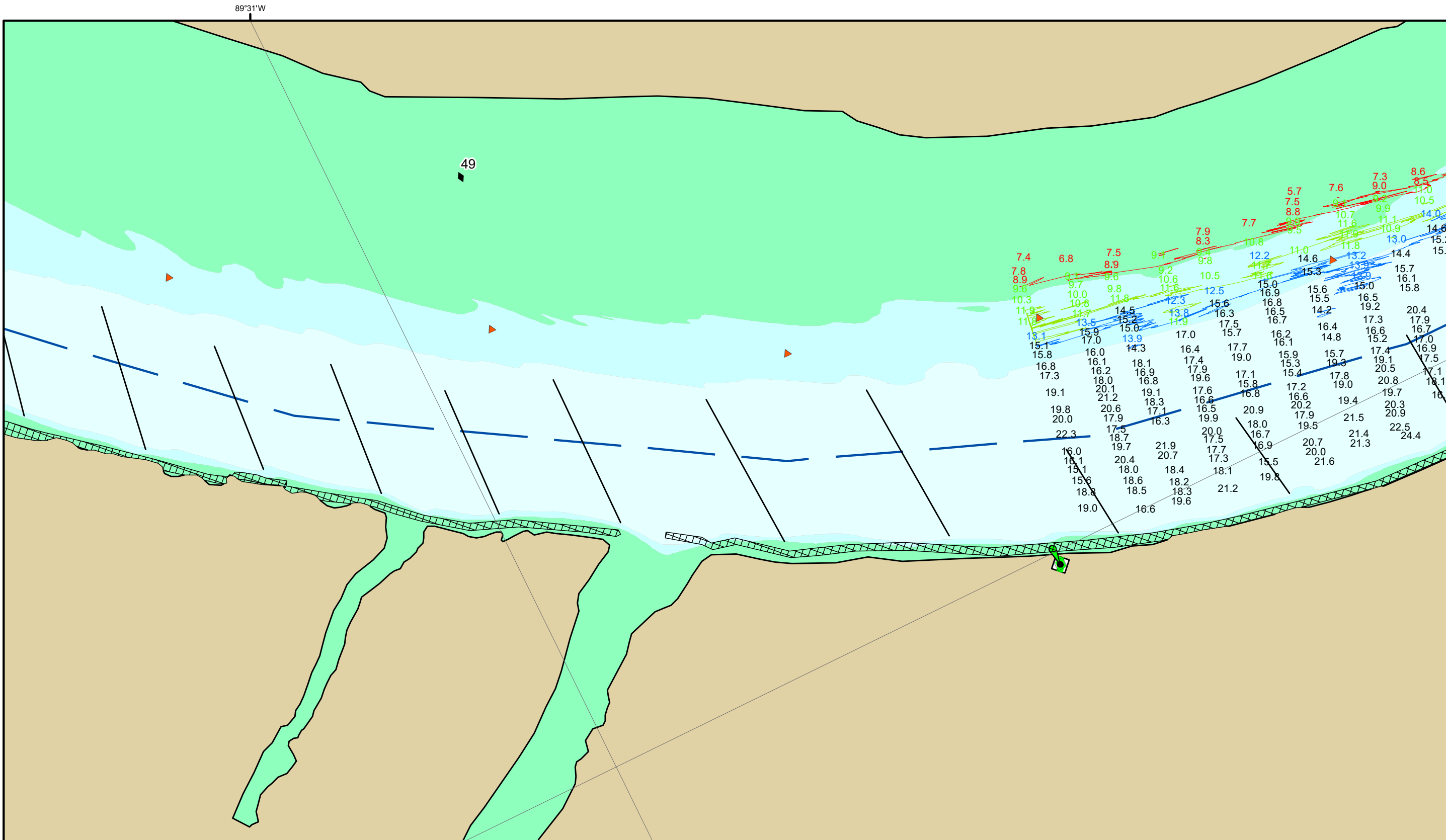
Distribution Notice: The data represents the results of a survey conducted on the date indicated and can only be considered to represent the general condition existing at that time. The information depicted on this map represents the results of a survey conducted on the date indicated and can only be considered to represent the general condition existing at that time. The location of navigation aids are based on and provided by the U.S. Coast Guard.

Surveyed By:	Received By:	Checked By:
Submitted:	Documented:	Approved:

Survey Information

DEVILS_ISLAND_UPPER_MISSISSIPPI
 UM_SL_DIC_20221005_BD_1
 05 October 2022

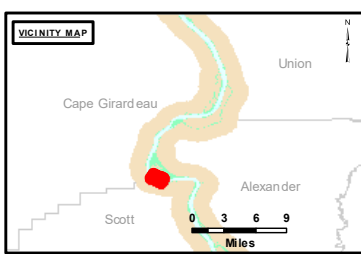
Reach Number
 11 of 35



DISCLAIMER: The United States Government furnishes this information for a specific purpose and does not warrant its accuracy or completeness. It is provided as a service to the user and is not to be used for any other purpose. The user assumes all liability for any errors or omissions in the data. The user also assumes all liability for any damage or loss resulting from the use of this information. The United States Government is not responsible for any damage or loss resulting from the use of this information. The user also assumes all liability for any damage or loss resulting from the use of this information.

U.S. ARMY CORPS OF ENGINEERS ST. LOUIS DISTRICT		
Submitted By:	Received By:	Checked By:

Survey Information
 DEVILS_ISLAND_UPPER_MISSISSIPPI
 UM_SL_DIC_20221005_BD_1
 05 October 2022



LAYERS

- River Mile
- Sailing Line
- 9' below LWRP2014 Surface
- 12' below LWRP2014 Surface
- 14' below LWRP2014 Surface

Depths shown are below LWRP2014 Surface

Aids to Navigation

- Green
- Red
- Junction
- Green Buoy
- Red Buoy
- Training Structure
- Revetment

NOTES:
 Horizontal Coordinate System:
 North American Datum of 1983 (NAD83), projected to the State Plane Coordinate System (SPCS), Missouri East Zone. Distance units in U.S. Survey Feet.
 Vertical Datum:
 Soundings are shown in feet and indicate depths below the 2014 Low Water Reference Plane.
 The information depicted on this map represents the results of a survey conducted on the date indicated and can only be considered to represent the general condition existing at that time.
 The location of navigation aids are based on and provided by the U.S. Coast Guard.

Reach Number
 12 of 35