



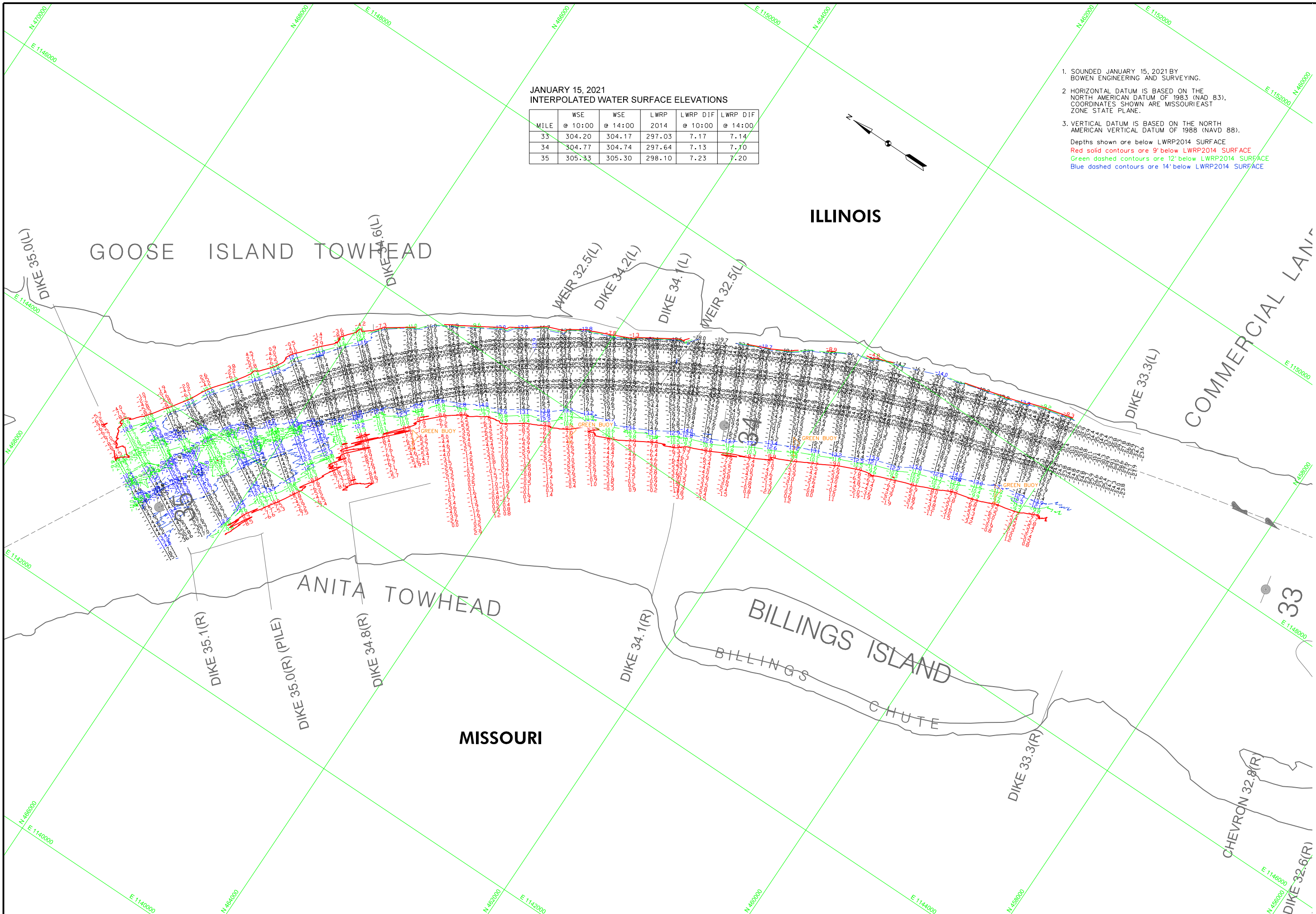
US Army Corps of Engineers
St. Louis District

JANUARY 15, 2021
INTERPOLATED WATER SURFACE ELEVATIONS

| MILE | WSE | | LWRP 2014 | LWRP DIF | |
|------|---------|---------|-----------|----------|---------|
| | @ 10:00 | @ 14:00 | | @ 10:00 | @ 14:00 |
| 33 | 304.20 | 304.17 | 297.03 | 7.17 | 7.14 |
| 34 | 304.77 | 304.74 | 297.64 | 7.13 | 7.10 |
| 35 | 305.33 | 305.30 | 298.10 | 7.23 | 7.20 |

1. SOUNDED JANUARY 15, 2021 BY BOWEN ENGINEERING AND SURVEYING.
2. HORIZONTAL DATUM IS BASED ON THE NORTH AMERICAN DATUM OF 1983 (NAD 83). COORDINATES SHOWN ARE MISSOURI EAST ZONE STATE PLANE.
3. VERTICAL DATUM IS BASED ON THE NORTH AMERICAN VERTICAL DATUM OF 1988 (NAVD 88).

Depths shown are below LWRP2014 SURFACE
 Red solid contours are 9' below LWRP2014 SURFACE
 Green dashed contours are 12' below LWRP2014 SURFACE
 Blue dashed contours are 14' below LWRP2014 SURFACE



| ZERO N.A.V.D. MILE | GRAV'S POINT NO | HERBES, L | COMMERGE NO | PRICE'S LANDING |
|--------------------|-----------------|-----------|----------------------|-----------------------|
| LWRP 2014 | 305.81 | 304.61 | 301.02 | 294.38 |
| 15 JAN 2021 | X | X | 6.290(00) E.2614(00) | 2.5210(00) 2.4914(00) |

| U.S. ARMY ENGINEER DIVISION | Survey Date | Survey Date |
|-------------------------------|-------------------|------------------|
| CORPS OF ENGINEERS | BOWEN ENGINEERING | JANUARY 15, 2021 |
| ST. LOUIS, MISSOURI | Drawn by | Reviewed by |
| UPPER MISSISSIPPI RIVER BASIN | X | X |
| MISSISSIPPI RIVER | APPROVED: | APPROVED: |
| | X | X |

1" = 240 METERS
 1" = 800 FEET
 THE INFORMATION DEPICTED ON THIS MAP REPRESENTS THE RESULTS OF A SURVEY CONDUCTED UNDER THE GENERAL CONDITIONS SET FORTH IN THE PRE DREDGE SURVEY RIVER MILES 35.0 - 33.5

PLATE NUMBER
 XX