



US Army Corps of Engineers
St. Louis District

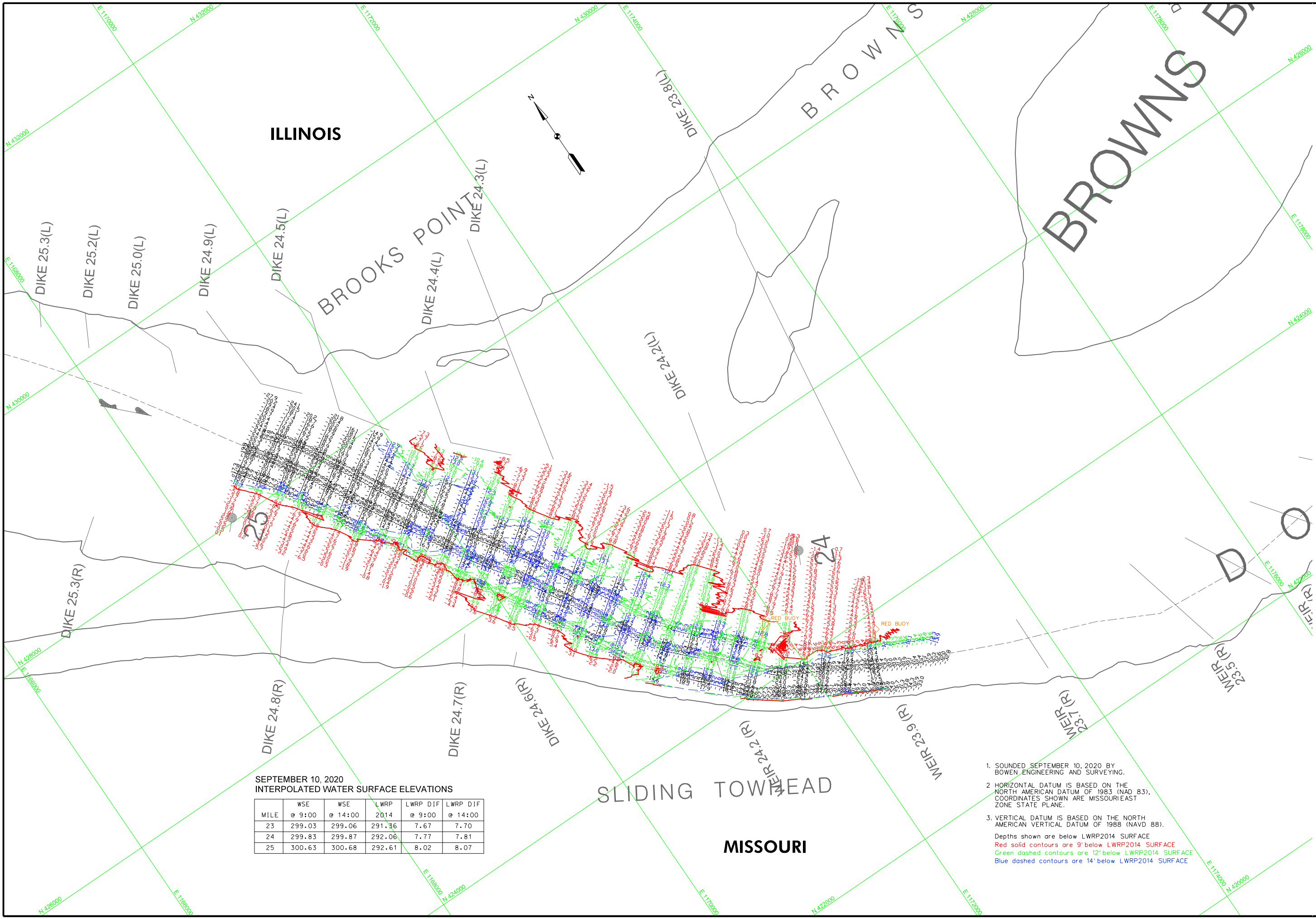
COMMERCE NO	PRECIS LANDING	THOMPSON LANDING	BIRD'S POINT
10160	298.95	279.03	273.91
10161	298.95	279.03	273.91
10162	298.95	279.03	273.91
10163	298.95	279.03	273.91
10164	298.95	279.03	273.91
10165	298.95	279.03	273.91
10166	298.95	279.03	273.91
10167	298.95	279.03	273.91
10168	298.95	279.03	273.91
10169	298.95	279.03	273.91
10170	298.95	279.03	273.91
10171	298.95	279.03	273.91
10172	298.95	279.03	273.91
10173	298.95	279.03	273.91
10174	298.95	279.03	273.91
10175	298.95	279.03	273.91
10176	298.95	279.03	273.91
10177	298.95	279.03	273.91
10178	298.95	279.03	273.91
10179	298.95	279.03	273.91
10180	298.95	279.03	273.91
10181	298.95	279.03	273.91
10182	298.95	279.03	273.91
10183	298.95	279.03	273.91
10184	298.95	279.03	273.91
10185	298.95	279.03	273.91
10186	298.95	279.03	273.91
10187	298.95	279.03	273.91
10188	298.95	279.03	273.91
10189	298.95	279.03	273.91
10190	298.95	279.03	273.91
10191	298.95	279.03	273.91
10192	298.95	279.03	273.91
10193	298.95	279.03	273.91
10194	298.95	279.03	273.91
10195	298.95	279.03	273.91
10196	298.95	279.03	273.91
10197	298.95	279.03	273.91
10198	298.95	279.03	273.91
10199	298.95	279.03	273.91
10200	298.95	279.03	273.91

Survey Date	SEPTEMBER 10, 2020
Drawn by	Reviewed by
Submitted	Approved
File name	Plot date

Scale	0	400	800	1200	1600	2000
METERS	0	400	800	1200	1600	2000
FEET	0	400	800	1200	1600	2000

PRE DREDGE SURVEY
RIVER MILES 25.0 - 23.9

PLATE NUMBER
XX
SHEET 1 OF 1



SEPTEMBER 10, 2020
INTERPOLATED WATER SURFACE ELEVATIONS

MILE	WSE @ 9:00	WSE @ 14:00	LWRP 2014 @ 9:00	LWRP DIF @ 9:00	LWRP DIF @ 14:00
23	299.03	299.06	291.36	7.67	7.70
24	299.83	299.87	292.06	7.77	7.81
25	300.63	300.68	292.61	8.02	8.07

- SOUNDED SEPTEMBER 10, 2020 BY BOWEN ENGINEERING AND SURVEYING.
 - HORIZONTAL DATUM IS BASED ON THE NORTH AMERICAN DATUM OF 1983 (NAD 83). COORDINATES SHOWN ARE MISSOURI/EAST ZONE STATE PLANE.
 - VERTICAL DATUM IS BASED ON THE NORTH AMERICAN VERTICAL DATUM OF 1988 (NAVD 88).
- Depths shown are below LWRP2014 SURFACE
 Red solid contours are 9' below LWRP2014 SURFACE
 Green dashed contours are 12' below LWRP2014 SURFACE
 Blue dashed contours are 14' below LWRP2014 SURFACE