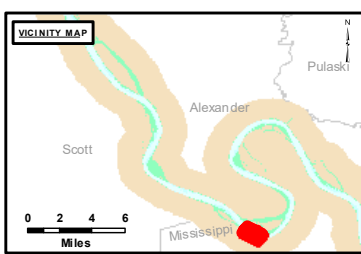


DISCLAIMER: The United States Government furnishes this information for a specific purpose and does not warrant its accuracy or completeness. It is provided as is, with all faults. The user assumes all liability for any errors or omissions in the data. The user also assumes all liability for any damage or loss resulting from the use of this information. The United States Government is not responsible for any damage or loss resulting from the use of this information. The user also assumes all liability for any damage or loss resulting from the use of this information.

U.S. ARMY CORPS OF ENGINEERS ST. LOUIS DISTRICT	
Submitted By:	Checked By:
Approved:	Checked:

Survey Information
 DOGTOOTH_BEND_UPPER_MISSISSIPPI
 UM_SL_DBC_20221004_BD_1
 04 October 2022



LAYERS

- River Mile
- Sailing Line
- 9' below LWRP2014 Surface
- 12' below LWRP2014 Surface
- 14' below LWRP2014 Surface

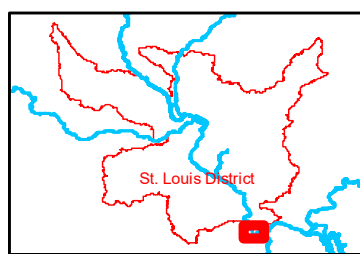
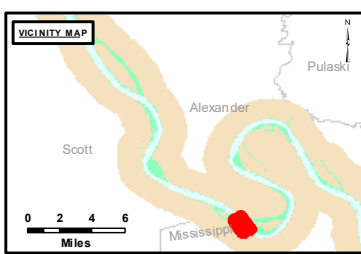
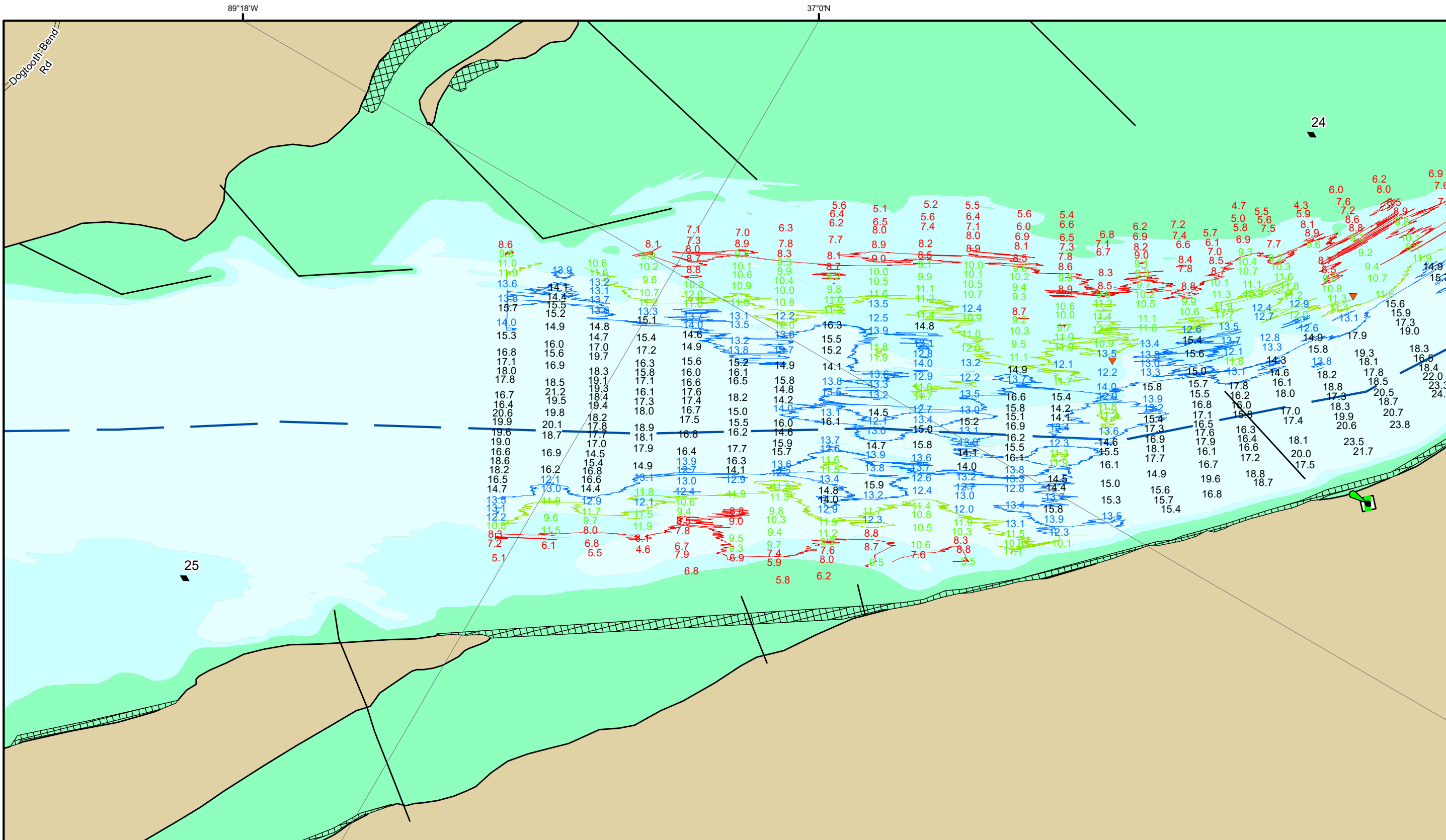
Depths shown are below LWRP2014 Surface

Aids to Navigation

- Green
- Red
- Junction
- Green Buoy
- Red Buoy
- Training Structure
- Revetment

NOTES:
 Horizontal Coordinate System:
 North American Datum of 1983 (NAD83), projected to the State Plane Coordinate System (SPCS), Missouri East Zone. Distance units in U.S. Survey Feet.
 Vertical Datum:
 Soundings are shown in feet and indicate depths below the 2014 Low Water Reference Plane.
 The information depicted on this map represents the results of a survey conducted on the date indicated and can only be considered to represent the general condition existing at that time.
 The location of navigation aids are based on and provided by the U.S. Coast Guard.

Reach Number
 6 of 27



LAYERS

- River Mile
- Sailing Line
- 9' below LWRP2014 Surface
- 12' below LWRP2014 Surface
- 14' below LWRP2014 Surface

Depths shown are below LWRP2014 Surface

Aids to Navigation

- Green Buoy
- Red Buoy
- Junction
- Training Structure
- Revetment

Scale: 0, 250, 500, 750, 1,000 Feet

NOTES:
 Horizontal Coordinate System:
 North American Datum of 1983 (NAD83), projected to the State Plane Coordinate System (SPCS), Missouri East Zone. Distance units in U.S. Survey Feet.
 Vertical Datum:
 Soundings are shown in feet and indicate depths below the 2014 Low Water Reference Plane.
 The information depicted on this map represents the results of a survey conducted on the date indicated and can only be considered to represent the general condition existing at that time.
 The location of navigation aids are based on and provided by the U.S. Coast Guard.



DISCLAIMER: The data represents the results of field observations for a specific date and time. It is not intended to be used for navigation purposes. The data is provided for informational purposes only. The user assumes all responsibility for the use of the data. The data is not to be used for any purpose other than that for which it was collected. The data is not to be used for any purpose other than that for which it was collected. The data is not to be used for any purpose other than that for which it was collected.

Surveyed By:	Received By:	Checked By:
Submitted:	Documented:	Approved:

Survey Information
 DOGTOOTH_BEND_UPPER_MISSISSIPPI
 UM_SL_DBC_20221004_BD_1
 04 October 2022

Reach Number
 7 of 27