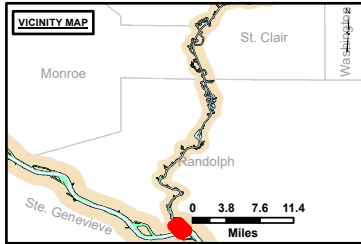


DISCLAIMER: The United States Government Lenders Access Contract with the US Government makes no warranty, express or implied, regarding the accuracy, reliability, or completeness of any information or data furnished hereunder. The recipient may not transfer these data to others without obtaining the Customer's written consent. The data represents the results of data collection/processing by a specific US Army Corps of Engineers project and is not intended for general use. As such, it is only valid for the intended use, current time and location, and is not to be used for any other purpose without the approval of the data provider.

U.S. ARMY CORPS OF ENGINEERS		
Surveyed By:	Plotted By:	Checked By:
Number:	Document:	Approved:

Survey Information
 POOL_KK1_KASKASKIA_RIVER
 KK_SL_KK1_20241220_AD_1
 20 December 2024



LAYERS

- River Mile
- Sailing Line
- 9' below LWRP2014 Surface
- 12' below LWRP2014 Surface
- 14' below LWRP2014 Surface

Depths shown are below LWRP2014 Surface

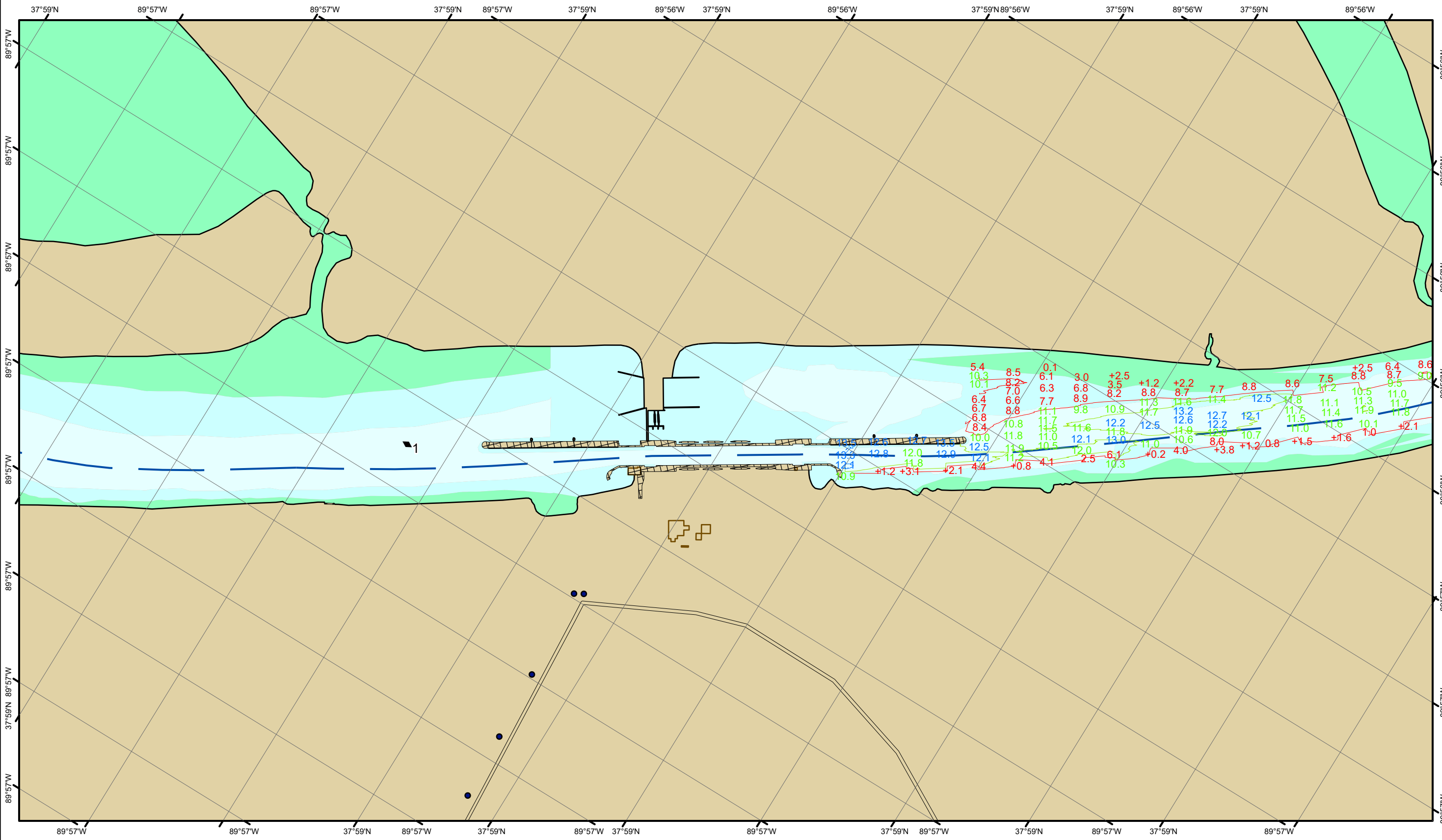
Aids to Navigation

- Green
- Red
- Junction
- Green Buoy
- Red Buoy

Training Structure
 Revetment
 Tower/Power Poles
 Electrical Lines
 Fiber Optic Lines
 Pipelines

NOTES:
 Horizontal Coordinate System: North American Datum of 1983 (NAD83), projected to the State Plane Coordinate System (SPCS), Illinois West Zone. Distance units in U.S. Survey Feet.
 Vertical Datum: Soundings are shown in feet and indicate depths below the Kaskaskia River Datum.
 The information depicted on this map represents the results of a survey conducted on the date indicated and can only be considered to represent the general condition existing at that time.
 The location of navigation aids are based on and provided by the U.S. Coast Guard.

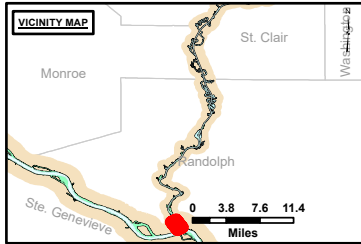
Reach Number
 1 of 60



DISCLAIMER: The United States Government furnishes this information as a service to the public and does not warrant, represent, or guarantee the accuracy, reliability, or availability for any particular purpose of the information and the data furnished. The United States shall be held harmless for any loss or damage, including consequential or punitive damages, resulting from the use of this information. These data belong to the Government. Therefore, the recipient may not transfer these data to others, without also transferring this disclaimer.

Surveyed By:	Plotted By:	Checked By:
Number:	Recommended:	Approved:

Survey Information
 POOL_KK1_KASKASKIA_RIVER
 KK_SL_KK1_20241220_AD_1
 20 December 2024



LAYERS

- River Mile
- Sailing Line
- 9' below LWRP2014 Surface
- 12' below LWRP2014 Surface
- 14' below LWRP2014 Surface

Depths shown are below LWRP2014 Surface

Aids to Navigation

- Green
- Red
- Junction
- Green Buoy
- Red Buoy

Structures

- Training Structure
- Revetment
- Tower/Power Poles
- Electrical Lines
- Fiber Optic Lines
- Pipelines

Feet
0 250 500 750 1,000

NOTES:
 Horizontal Coordinate System: North American Datum of 1983 (NAD83), projected to the State Plane Coordinate System (SPCS), Illinois West Zone. Distance units in U.S. Survey Feet.
 Vertical Datum: Soundings are shown in feet and indicate depths below the Kaskaskia River Datum.
 The information depicted on this map represents the results of a survey conducted on the date indicated and can only be considered to represent the general condition existing at that time.
 The location of navigation aids are based on and provided by the U.S. Coast Guard.

Reach Number
2 of 60