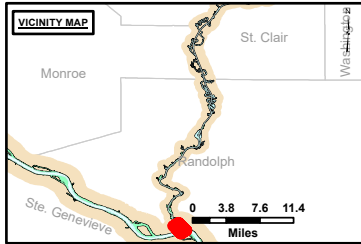


DISCLAIMER: The United States Government Lenders...
 Distribution Liability: The data represents the results of data collection...
 Accuracy: The data represents the results of data collection...
 Use: This data is provided for informational purposes only and is not intended for navigation or other critical applications.

Surveyed By:	Plotted By:	Checked By:

Survey Information
 POOL_KK1_KASKASKIA_RIVER
 KK_SL_KK1_20241011_BD_1
 11 October 2024



LAYERS

- River Mile
- Sailing Line
- 9' below LWRP2014 Surface
- 12' below LWRP2014 Surface
- 14' below LWRP2014 Surface

Depths shown are below LWRP2014 Surface

Aids to Navigation

- Green
- Red
- Junction
- Green Buoy
- Red Buoy

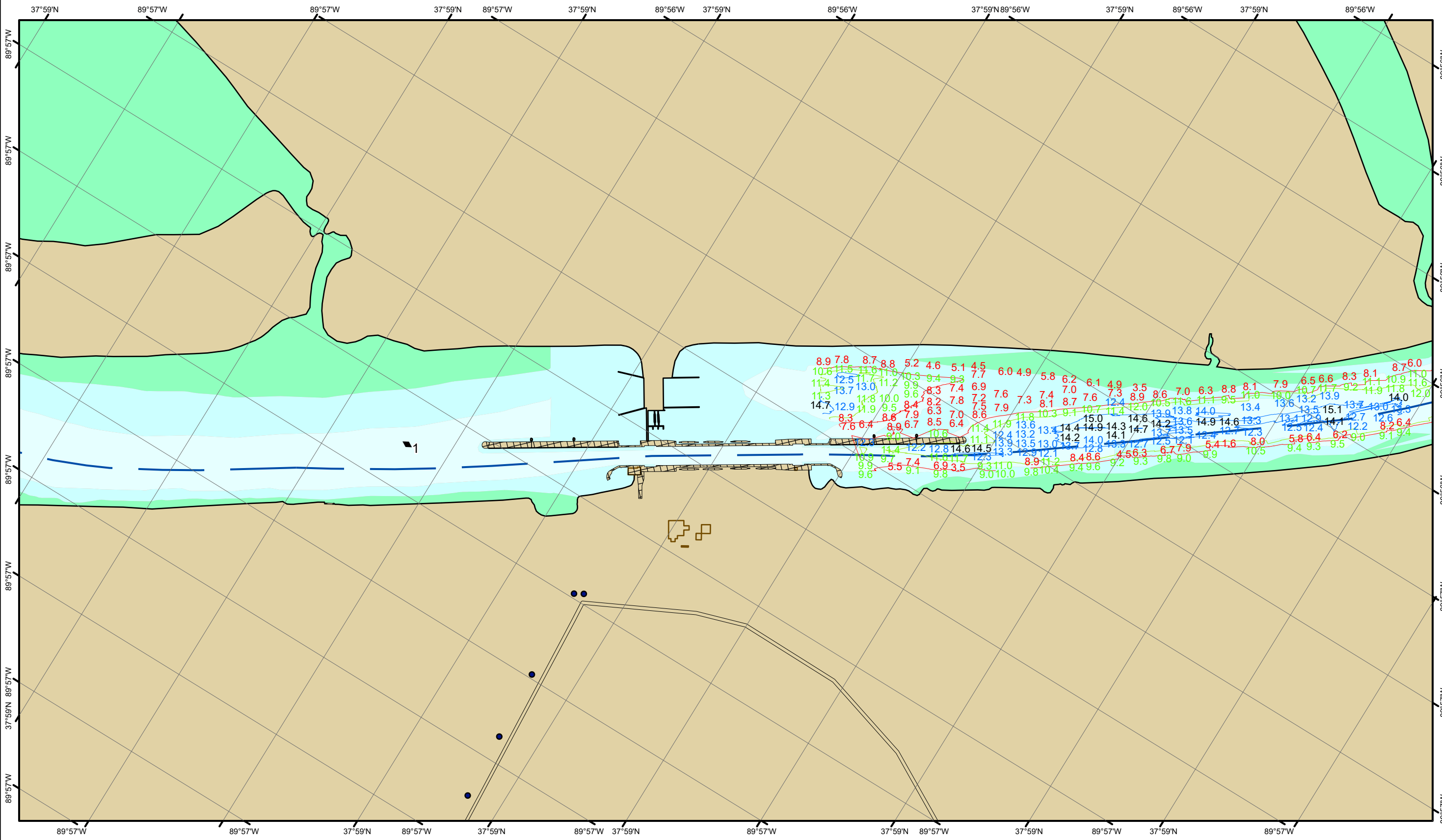
Structures

- Training Structure
- Revetment
- Tower/Power Poles
- Electrical Lines
- Fiber Optic Lines
- Pipelines

Scale: 0, 250, 500, 750, 1,000 Feet

NOTES:
 Horizontal Coordinate System: North American Datum of 1983 (NAD83), projected to the State Plane Coordinate System (SPCS), Illinois West Zone. Distance units in U.S. Survey Feet.
 Vertical Datum: Soundings are shown in feet and indicate depths below the Kaskaskia River Datum.
 The information depicted on this map represents the results of a survey conducted on the date indicated and can only be considered to represent the general condition existing at that time.
 The location of navigation aids are based on and provided by the U.S. Coast Guard.

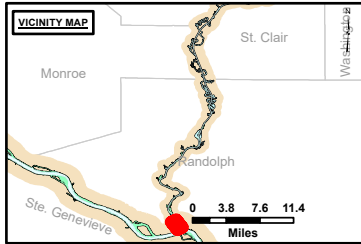
Reach Number
 1 of 60



DISCLAIMER: The United States Government furnishes this information as a service to the public and does not warrant, represent, or guarantee the accuracy, reliability, or availability for any particular purpose of the information and the data furnished. The United States shall be liable for damages only for negligence of its personnel or employees in the performance of their duties. The recipient may not transfer these data to others without obtaining the permission of the United States Government.

Surveyed By:	Plotted By:	Checked By:
Number:	Recommended:	Approved:

Survey Information
 POOL_KK1_KASKASKIA_RIVER
 KK_SL_KK1_20241011_BD_1
 11 October 2024



LAYERS

- River Mile
- Sailing Line
- 9' below LWRP2014 Surface
- 12' below LWRP2014 Surface
- 14' below LWRP2014 Surface

Depths shown are below LWRP2014 Surface

Aids to Navigation

- Green
- Red
- Junction
- Green Buoy
- Red Buoy

Training Structure

- Retevment
- Tower/Power Poles
- Electrical Lines
- Fiber Optic Lines
- Pipelines

Feet
0 250 500 750 1,000

NOTES:
 Horizontal Coordinate System:
 North American Datum of 1983 (NAD83), projected to the State Plane Coordinate System (SPCS), Illinois West Zone. Distance units in U.S. Survey Feet.
 Vertical Datum:
 Soundings are shown in feet and indicate depths below the Kaskaskia River Datum.
 The information depicted on this map represents the results of a survey conducted on the date indicated and can only be considered to represent the general condition existing at that time.
 The location of navigation aids are based on and provided by the U.S. Coast Guard.

Reach Number
 2 of 60